

**CITY OF RAVENSWOOD
JACKSON COUNTY, WEST VIRGINIA
WELCOME CENTER & BUSINESS INCUBATOR**

ADDENDUM #1

August 6, 2025

THRASHER PROJECT # T60-11456

TO WHOM IT MAY CONCERN:

A **MANDATORY** Pre-Bid Conference was held on Tuesday, August 5, 2025, on the above-referenced project, a copy of the sign in sheet is included in this Addendum. The following are clarifications and responses to questions posed by contractors for the above-referenced project.

A. GENERAL

Nothing on this addendum.

B. SPECIFICATIONS

1. Section 142020 Elevators and Lifts has been revised within this addendum.

C. DRAWINGS

1. Sheets A1.01 and A1.02 have been revised within this addendum.

D. QUESTIONS AND RESPONSES

1. QUESTION

What are the start and finish dates for this project?

RESPONSE

Within 2-4 weeks after bid opening. Substantial completion is 180 calendar days after commencing to begin.

2. QUESTION

Substitution requests to use Dualflow Plus hand drier or a U-Flow hand dryer.

RESPONSE

The Dualflow Plus by Saniflow Corp. is an approved substitution for the hand dryers.

3. QUESTION

Substitution request to use Babymedi changing station

RESPONSE

The Babymedi by Saniflow Corp. is an approved substitution for the baby changing station.

E. CLARIFICATIONS

1. B&O taxes are required.
2. Building Permit is required.

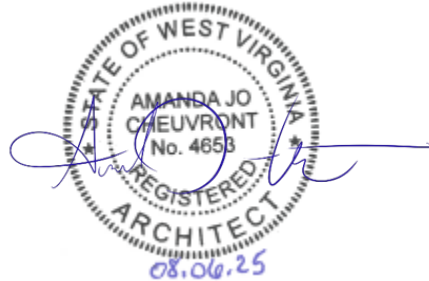
If you have any questions or comments, please feel free to contact me at your earliest convenience. As a reminder, bids will be received until 2:00 p.m. on Tuesday, August 19, 2025, at the City of Ravenswood, 1 Wall Street, Ravenswood, 26134 WV. Good luck to everyone and thank you for your interest in the project.

Sincerely,

THE THRASHER GROUP, INC.



AMANDA CHEUVRONT, AIA, NCARB
Project Manager



Enclosures:

**CITY OF RAVENSWOOD
JACKSON COUNTY, WEST VIRGINIA
WELCOME CENTER & BUSINESS INCUBATOR
(MANDATORY) PRE-BID CONFERENCE
Tuesday, August 5, 2025 @ 11:00 a.m.**

Thrasher Project #T60-11456

Name	Representing	Phone #	Email Address
Mike Brown	MAC Group	304-488-0199	mbrownbngi@gmail.com
Chris Garnes	Meadowridge Construction	304-674-6527	Chris.garnes@meadowridge.construction
Stanley Kinder	Start to Finish Construction	304-982-2392	stankinder10@outlook.com
John CASEY	CASEY Construction	(304) 512-5555	J.CASEY@CASEY-CONSTRUCTION.NET
David Russell	Wolf Creek	740-541-4375	drussell@wolfcreekcontractors.com
Jeff Fleak	UCCI	304-422-2141	alowther@ucciwv.com
CHRIS SHAW	AGSTEN CONSTRUCTION	304-543-0110	CSHAW@AGSTENCONSTRUCTION.COM
Ryan Perry	Jarrett Construction	304-719-1026	ryan.perry@jarrett-construction.com
Nikki Sydnor	Wiseman Construction	304-552-8232 304-546-1543	awiseman@wisemancorp.com nwiseman@wisemancorp.com jlink@wisemancorp.com
Timothy Reed	T.W. Reed Construction	304-531-8311	timothy@twreedconstruction.com

[illegible]

SECTION 14202 - ELEVATORS AND LIFTS

PART 1. GENERAL

1.1 SECTION INCLUDES

- A. Commercial wheelchair lifts.

1.2 REFERENCES

- A. American National Standards Institute (ANSI) B-29.2 - Chain Standards for Inverted Tooth (Silent) Chains and Sprockets.
- B. American Society of Mechanical Engineers (ASME) A18.1 - Safety Standard for Platform and Stairway Chair Lifts.
- C. CSA B355 - Lifts for Persons with Physical Disabilities.
- D. U.S. Architectural & Transportation Barriers Compliance Board's "Americans with Disabilities Act (ADA), Accessibility Guidelines for Buildings and Facilities (ADAAG)".
- E. ICC/ANSI A117.1 - Accessible and Usable Buildings and Facilities.
- F. NFPA 70 - National Electric Code.

1.3 REQUIREMENTS OF REGULATORY AGENCIES:

- A. Fabricate and install work in compliance with applicable jurisdictional authorities.
- B. File shop drawings and submissions with local authorities as the information is made available. Company pre-inspection and jurisdictional authority inspections and permits are to be made on timely basis as required.

1.4 SUBMITTALS

- A. Submit under provisions of Section 01300.
- B. Product Data: Manufacturer's data sheets on each product to be used, including:
 - 1. Preparation instructions and recommendations.
 - 2. Storage and handling requirements and recommendations.
 - 3. Installation methods.
- C. Shop Drawings: Provide a complete layout of lift equipment detailing dimensions and clearances as required.
- D. Selection Samples: For each finish product specified requiring selection of color or finish, two complete sets of color charts representing manufacturer's full range of available colors and patterns.

1.5 QUALITY ASSURANCE

- A. Installer Qualifications:

1. Skilled tradesmen shall be employees of the installing contractor approved by the manufacturer, with demonstrated ability to perform the work on a timely basis.
2. Execute work of this section only by a company that has adequate product liability insurance.

1.6 DELIVERY, STORAGE, AND HANDLING

- A. Store products in manufacturer's unopened packaging until ready for installation.
- B. Store and dispose of solvent-based materials, and materials used with solvent-based materials, in accordance with requirements of local authorities having jurisdiction.

1.7 PROJECT CONDITIONS

- A. Maintain environmental conditions (temperature, humidity, and ventilation) within limits recommended by manufacturer for optimum results. Do not install systems under environmental conditions outside manufacturer's absolute limits.

1.8 WARRANTY

- A. Coverage - this warranty applies to the repair or replacement, at Manufacturer's option, of parts that fail due to defective material or workmanship. Manufacturer may, at its option, provide factory reconditioned parts. This warranty is provided to the Authorized Dealer on behalf of the final purchaser of the product and is not transferable. The Manufacturer's warranty does not cover labor charges for the removal, repair or replacement of warranty parts but such costs may be covered for a period of time by Authorized Dealer's warranty, which is provided to purchaser separately.

1. The manufacturer shall offer a 36-month limited warranty on parts from date of shipment.

PART 2. PRODUCTS

2.1 MANUFACTURERS

- A. Basis of Design: Savaria
- B. Requests for substitutions will be considered in accordance with provisions of Section 01600.

2.2 COMMERCIAL WHEELCHAIR LIFT

- A. Hydraulic Vertical Platform Lifts: Savaria V1504-STD.
- B. Hydraulic Vertical Platform Lift: The lift described here, manufactured by Savaria Lifts Inc, is a vertical platform lift consisting of a hydraulic tower with a lifting platform. The platform is made to accommodate a wheelchair user or a person with impaired mobility. The lift can be used indoor or outdoor (with optional package) and in commercial or residential applications.

- C. Work described in this section includes providing equipment, incidental material and labor required for complete, operable roped hydraulic wheelchair lift installation. Lifts shall be erected, installed, adjusted, tested and placed in operation by lift system manufacturer, or manufacturer's authorized installer.
 - 1. Lifts shall be in accordance:
 - a. ASME A18.1 and A117.1 compliant (USA)
- D. The following preparatory work to receive the lifts specified in this section is part of the work of other sections:
 - 1. Permanent 120 VAC, 20 amp single phase power to operate lift to be provided from a lockable fused/cartridge type disconnect switch with auxiliary contacts for battery operation. Refer to drawings for permanent power specifications and location of disconnects. Temporary power may be provided to expedite installation of lift.
 - 2. Provide a plumb and square hoistway with smooth interior surfaces, including fascias or furring of the hoistway interior.
 - 3. Provide rough openings per lift contractor's shop drawings.
 - 4. Provide substantial, level pit floor slab as indicated on the lift contractor's shop drawings.
- E. Characteristics:
 - 1. Rated Load: 750 lb (340 kg).
 - 2. Rated Speed: 20 fpm (0.10 m/s).
 - 3. Car Dimensions:
 - a. 36 inches W by 54 inches D (914 mm by 1371 mm) – Standard
 - 4. Levels Served:
 - a. 2.
 - 5. Car Configuration:
 - a. Enter/Exit Same side.
 - 6. Travel: 12 feet.
 - 7. Pit Depth:
 - a. 3" – Standard
 - 8. Powder Coat Finish
 - a. Optional Color – From manufactures color chart
 - 9. Operation: Constant pressure.
 - 10. Power Supply: 110 volt, 20 amp, 1 phase, 60 Hz.
 - 11. Drive System: 2:1 Roller chain hydraulic.
 - 12. Emergency Power:
 - a. Battery operation in down direction – Standard.
 - 13. Controller: Relay logic based controller.
 - 14. Motor/Pump: 1 HP (112 kw), gear type
 - 15. Manual Lowering: Outside the hoistway at lower landing.
- F. Car Enclosure:
 - 1. Cab Configuration:
 - a. Side Guards of platform shall have a steel frame with a powder coat finish and steel panel inserts to a minimum of 42 inches (1067 mm) high.
- G. Doors and Gates:

1. First landing door:
 - a. Door type:
 - 1) 80" low profile aluminum door with a concealed electro/mechanical interlock.
 - b. Flush closing operation with hoistway side.
 - c. Operation
 - 1) Automatic door closer with hydraulic hinge
 - d. Door Width
 - 1) 36 inches (889 mm) clear opening.
 2. Upper landing door/gate:
 - a. Door/gate type:
 - 1) 80" low profile aluminum door with a concealed electro/mechanical interlock.
 - b. Flush closing operation with hoistway side.
 - c. Operation
 - 1) Automatic door closer with hydraulic hinge
 - d. Door/Gate Width
 - 1) 36 inches (889 mm)
- H. Call Stations: Provide flush, surface or door frame mounted landing call/send stations.
1. Call stations will be:
 - a. Keyed (removable in on/off position)
- I. Car Operation:
1. Car Operating Panel shall consist of constant pressure buttons, emergency stop/alarm button, on/off key switch (when applicable) and emergency LED light mounted on a removable stainless steel panel (Type 304 #4 Stainless Steel Finish).
 2. Auxiliary lighting: The car shall be equipped with a battery operated LED light fixture. The battery shall be the rechargeable type with an automatic recharging system.
 3. Telephone: The car shall be equipped with a
 - a. ADA Hands free phone.
- J. Pumping Unit and Control:
1. The pumping unit and control shall be enclosed in the tower. The controller and pump unit shall be pre-wired and tested prior to shipment. The controller is to be relay logic based operation for ease of maintenance and service. Pump unit shall incorporate the following features:
 2. Adjustable pressure relief valve.
 3. Manually operable down valve to lower lift in the event of an emergency. This valve shall be activated from outside of the hoistway through a keyed box.
 4. Pressure gauge isolating valve, manually operable.
 5. Gate valve to isolate cylinder from pump unit.
 6. Electrical solenoid for down direction control.
 7. Emergency Operation - A manual lowering device shall be located outside the hoistway in a lockable box positioned at a lower landing.

- K. Cylinder And Plunger:
 - 1. The cylinder shall be constructed of steel pipe of sufficient thickness and suitable safety margin. The top of the cylinder shall be equipped with a cylinder head with an internal guide ring and self-adjusting packing.
 - 2. The plunger shall be constructed of a steel shaft of proper diameter machined true and smooth. The plunger shall be provided with a stop electrically welded to the bottom to prevent the plunger from leaving the cylinder.
- L. Roller Chains: Two No.50 roller chains with 5/8 inch (16 mm) pitch. Minimum breaking strength 6100 lb (2773 kg) each.
- M. Leveling Device:
 - 1. The lift shall be provided with an anti-creep device which will maintain the carriage level within 1/2 inch (12 mm) of each landing.
 - 2. All limit switch and leveling device switches shall be located in a position to be inaccessible to unauthorized persons. They shall be located behind the mast wall and be accessible through removable panels.
- N. Guide Yoke: The 2:1 guide yoke/sprocket assembly shall be supplied with idler sheaves, roller guide shoes, bearings and guards.
- O. Terminal Stopping Devices: Normal terminal stopping devices shall be provided at top and bottom of runway to stop the car positively and automatically.
- P. Guide Rails and Brackets: Steel 'C' guide rails and brackets shall be used to guide the platform and sling. Guide rails shall form part of the structural integrity of the unit and be integral to the mast enclosure, ensuring stability and minimum platform deflection when loaded.
- Q. Car Sling: Car sling shall be fabricated from steel tubing 44 inches (1116 mm) high with adequate bracing to support the platform and car enclosure. Roller guide shoes shall be mounted on the top and bottom of the car sling to engage the guide rails. Guide shoes shall be roller type with 3 inches (76 mm) diameter wheels. Nylon guide shoes shall not be used for better ride quality and durability.
- R. Wiring: All wiring and electrical connections shall comply with applicable codes. Insulated wiring shall have flame-retardant and moisture-proof outer covering and shall be run in conduit or electrical wire ways if located outside the unit enclosure. Quick disconnect harnesses shall be used when possible.

PART 3. EXECUTION

3.1 EXAMINATION

- A. Do not begin installation until hoistway and machine room has been properly prepared.
- B. Site dimensions shall be taken to verify that tolerances and clearances have been maintained and meet local regulations.
- C. If substrate preparation is the responsibility of another installer, notify Architect of unsatisfactory preparation before proceeding. PREPARATION

- A. Clean surfaces thoroughly prior to installation.
- B. Prepare surfaces using the methods recommended by the manufacturer for achieving the best result for the substrate under the project conditions.

3.3 LIFT INSTALLATION

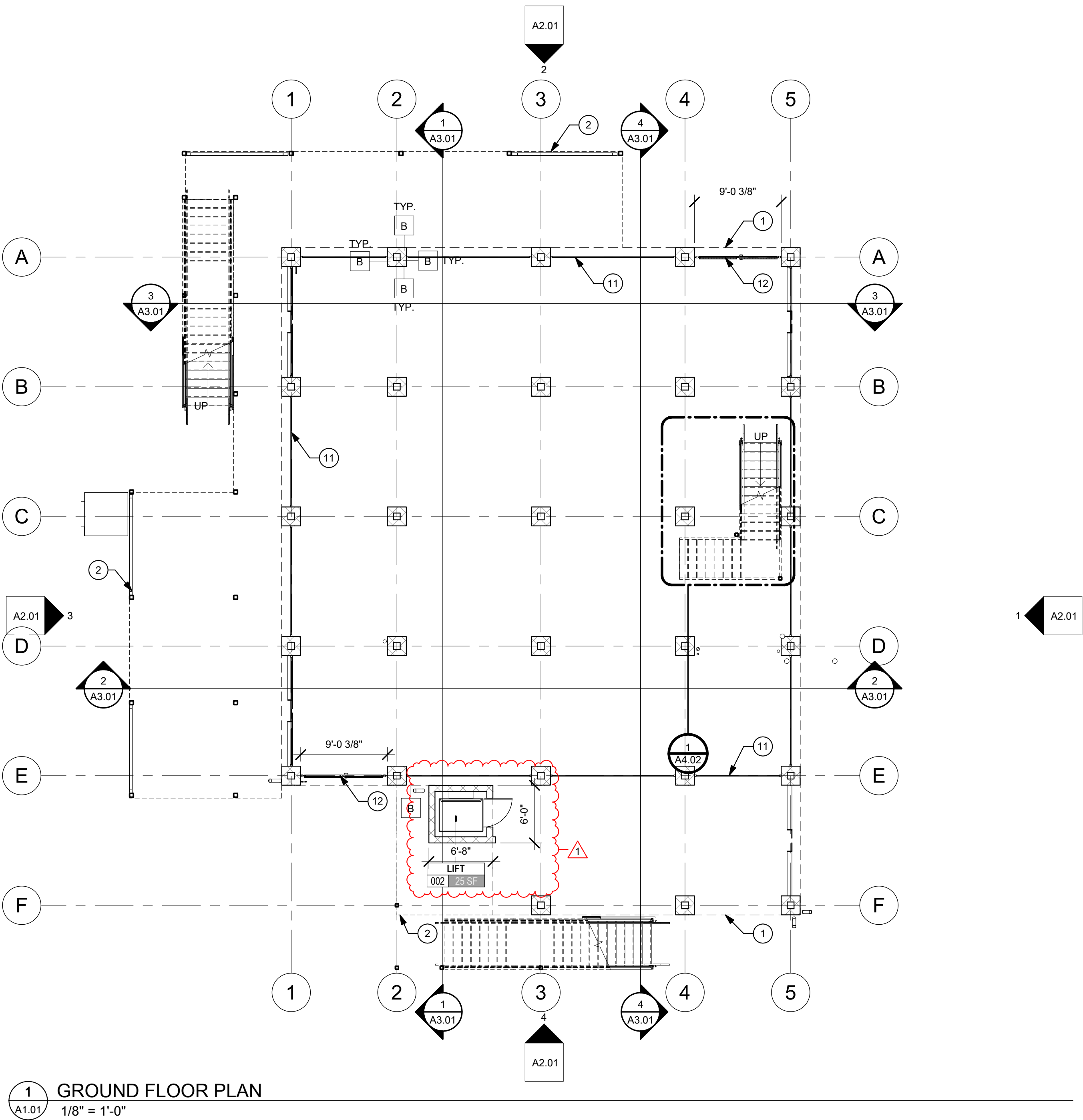
- A. Install all the components of the lift system that are specified in this section to be provided, and that are required by jurisdictional authorities to license the lift.
- B. Trained employees of the lift contractor shall perform all installation work of this section.
- C. Adjust lift for proper operation and clean unit thoroughly.
- D. Instruct users in operation procedures and Owner's maintenance person in trouble-shooting and maintenance procedures.

3.4 PROTECTION

- A. Protect installed products until completion of project.
- B. Touch-up, repair or replace damaged products before Substantial Completion.

END OF SECTION 14202

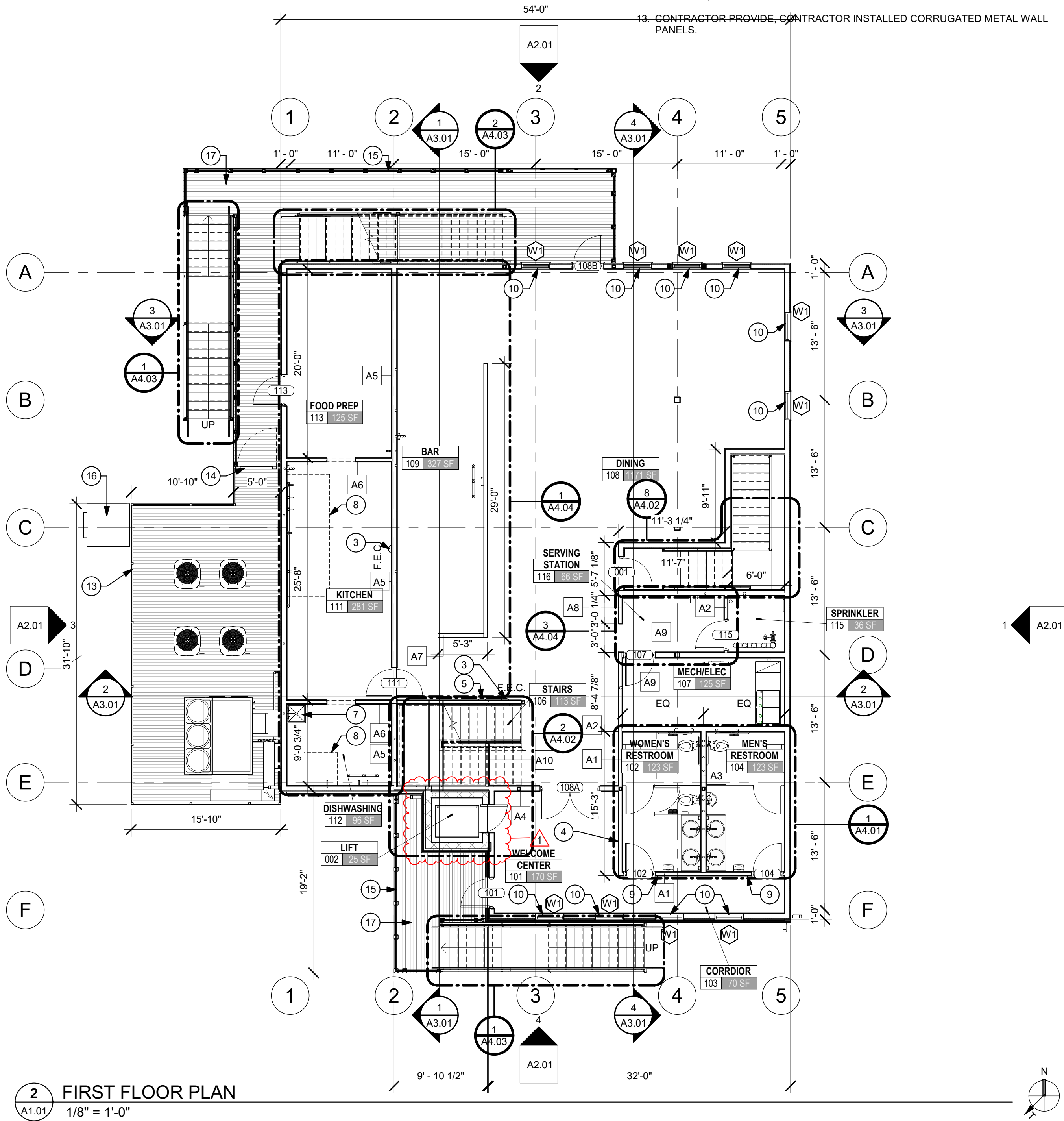
LAYOUT TAB: GROUND & FIRST FLOOR PLANS
CAD FILE: Autocad Drawings/CITY OF RAVENSWOOD WELCOME Center and Restaurant.rvt
PLOT DATE/TIME: 8/20/25 11:52:22 AM
USER: ALB



FLOOR PLAN KEYNOTES	
NOTE #	DESCRIPTION
1	LINE OF FLOOR ABOVE - SEE SECTIONS AND FIRST FLOOR PLAN
2	LINE OF DECK ABOVE - SEE SECTIONS AND FIRST FLOOR PLAN
3	FIRE EXTINGUISHER AND CABINETS
4	WELCOME CENTER KIOSK/DIGITAL WALL. COORDINATE WITH OWNER ON SIZE AND LOCATION. SEE ELECTRICAL AND DATA
5	AED AND CABINETS
7	MOP SINK - SEE PLUMBING
8	EXHAUST HOOD - SEE MECHANICAL
9	ROOM SIGNAGE LOCATION
10	2" WOOD BLINDS
11	4' H ALUMINUM FENCE - SEE SPECIFICATION
12	4' H ALUMINUM GATE - SEE SPECIFICATION
13	PRIVACY METAL FENCE - SEE SPECIFICATION
14	PRIVACY METAL GATE - SEE SPECIFICATION
15	WIRE ROPE METAL RAILING
16	RESIDENTIAL CARGO LIFT BY LEGACY LIFTS OR ARCHITECT APPROVED EQUIVALENT
17	COMPOSITE WOOD DECKING

GENERAL NOTES:

- THE SCOPE OF THE WORK IS GENERALLY LIMITED TO THE AREAS SHOWN ON THESE PLANS. WORK NECESSARY TO RUN ELECTRICAL SERVICE TO EXISTING PANELS OR EXTEND OR REROUTE OTHER UTILITY LINES IS ALSO INCLUDED.
- VERIFY ALL EXISTING CONDITIONS AND DIMENSIONS PRIOR TO COMMENCEMENT OF ANY ON SITE ACTIVITIES.
- DIMENSIONS SHOWN ON THESE PLANS ARE TYPICALLY FROM FACE OF FINISHED WALL TO FACE OF FINISHED WALL UNLESS NOTED OTHERWISE.
- TYPICAL WALLS SHALL BE 6" ABOVE FINISHED CEILING HEIGHT. VERIFY CEILING HEIGHTS ON ROOM FINISH SCHEDULE.
- CONTRACTOR SHALL SCHEDULE NOISY, NOXIOUS, OR DISRUPTIVE ACTIVITIES OUTSIDE OF BUSINESS HOURS.
- INSTALL WOOD BLOCKING IN WALLS TO RECEIVE WALL-MOUNTED ITEMS. WOOD BLOCKING SHALL BE FIRE RETARDANT TREATED.
- PREPARE ALL SURFACES TO RECEIVE SCHEDULED FINISH. REFERENCE ROOM FINISH SCHEDULE.
- FINISH FLOOR MATERIAL TRANSITIONS SHALL OCCUR AT CENTERLINE OF DOOR.
- THE HINGE SIDE OF INTERIOR DOOR FRAMES ARE LOCATED 2" FROM FACE OF ADJACENT WOOD STUD WALLS AND 4" FROM FACE OF ADJACENT CMU WALLS UNLESS OTHERWISE NOTED.
- SLOPE FLOOR TO FLOOR DRAINS.
- OWNER TO PROVIDE WOOD FOR INTERIOR STAIRS, CONTRACTOR TO INSTALL.
- REFER TO TYPICAL WALL ELEVATION ON 1/A7.01 FOR WALL FINISHES. OWNER PROVIDED, CONTRACTOR INSTALLED WOOD PANELING.
- CONTRACTOR PROVIDE, CONTRACTOR INSTALLED CORRUGATED METAL WALL PANELS.



THRASHER
600 WHITE OAKS BLVD.
P.O. BOX 940
BRIDGEPORT, WV 26330
P (304) 624-4108
F (304) 624-7831
www.thethrashergroup.com

THE INFORMATION CONTAINED HEREIN IS THE SOLE PROPERTY OF THE THRASHER GROUP, INC. REPRODUCTION OF THESE DOCUMENTS IN WHOLE, OR IN PART FOR ANY REASON WITHOUT PRIOR WRITTEN PERMISSION IS STRICTLY PROHIBITED.
COPYRIGHT © 2025
THE THRASHER GROUP, INC.



NO.	BY	DATE	DESCRIPTION
1			
2			
3			
4			
5			
6			
7			
8			
9			
10			
11			
12			
13			
14			
15			
16			
17			

CITY OF RAVENSWOOD WELCOME CENTER/BUSINESS INCUBATOR
CITY OF RAVENSWOOD
RAVENSWOOD, WV
JULY 23, 2025
CONSTRUCTION DOCUMENTS

DRAWN: ALB DATE: 07/23/24
CHECKED: AJC DATE: 07/23/24
PROJECT No. 1760-11456
SHEET No.
GROUND & FIRST FLOOR PLANS
A1.01

LAYOUT TAB SECOND FLOOR & ROOF PLANS
CAD FILE: A:\desk\Drawings\CITY OF RAVENSWOOD\Welcome Center and Restaurant\Second Floor and Restaurant.dwg
PLOT DATE/TIME: 8/20/2025 11:52:59 AM
USER: ALB

FLOOR PLAN KEYNOTES	
NOTE #	DESCRIPTION
1	LINE OF FLOOR ABOVE - SEE SECTIONS AND FIRST FLOOR PLAN
2	LINE OF DECK ABOVE - SEE SECTIONS AND FIRST FLOOR PLAN
3	FIRE EXTINGUISHER AND CABINETS
4	WELCOME CENTER KIOSK/DIGITAL WALL. COORDINATE WITH OWNER ON SIZE AND LOCATION. SEE ELECTRICAL AND DATA
5	AED AND CABINETS
7	MOP SINK - SEE PLUMBING
8	EXHAUST HOOD - SEE MECHANICAL
9	ROOM SIGNAGE LOCATION
10	2" WOOD BLINDS
11	4' H ALUMINUM FENCE - SEE SPECIFICATION
12	4' H ALUMINUM GATE - SEE SPECIFICATION
13	PRIVACY METAL FENCE - SEE SPECIFICATION
14	PRIVACY METAL GATE - SEE SPECIFICATION
15	WIRE ROPE METAL RAILING
16	RESIDENTIAL CARGO LIFT BY LEGACY LIFTS OR ARCHITECT APPROVED EQUIVALENT
17	COMPOSITE WOOD DECKING

ROOF KEYNOTS	
NOTE #	DESCRIPTION
1	GUTTER AND DOWNSPOUT
2	SNOWGUARD
3	KITCHEN EXHAUST FAN - SEE MECHANICAL
4	GRAVITY INTAKE VENTILATOR - SEE MECHANICAL
5	TIE-OFF POINT - SEE STRUCTURAL
6	STANDING SEAM METAL ROOFING
7	PIPE VENT - SEE PLUMBING
8	RIDGE VENT

GENERAL NOTES:

- THE SCOPE OF THE WORK IS GENERALLY LIMITED TO THE AREAS SHOWN ON THESE PLANS. WORK NECESSARY TO RUN ELECTRICAL SERVICE TO EXISTING PANELS OR EXTEND OR REROUTE OTHER UTILITY LINES IS ALSO INCLUDED.
- VERIFY ALL EXISTING CONDITIONS AND DIMENSIONS PRIOR TO COMMENCEMENT OF ANY ON SITE ACTIVITIES.
- DIMENSIONS SHOWN ON THESE PLANS ARE TYPICALLY FROM FACE OF FINISHED WALL TO FACE OF FINISHED WALL UNLESS NOTED OTHERWISE.
- TYPICAL WALLS SHALL BE 6" ABOVE FINISHED CEILING HEIGHT. VERIFY CEILING HEIGHTS ON ROOM FINISH SCHEDULE.
- CONTRACTOR SHALL SCHEDULE NOISY, NOXIOUS, OR DISRUPTIVE ACTIVITIES OUTSIDE OF BUSINESS HOURS.
- INSTALL WOOD BLOCKING IN WALLS TO RECEIVE WALL-MOUNTED ITEMS. WOOD BLOCKING SHALL BE FIRE RETARDANT TREATED.
- PREPARE ALL SURFACES TO RECEIVE SCHEDULED FINISH. REFERENCE ROOM FINISH SCHEDULE.
- FINISH FLOOR MATERIAL TRANSITIONS SHALL OCCUR AT CENTERLINE OF DOOR.
- THE HINGE SIDE OF INTERIOR DOOR FRAMES ARE LOCATED 2" FROM FACE OF ADJACENT WOOD STUD WALLS AND 4" FROM FACE OF ADJACENT CMU WALLS UNLESS OTHERWISE NOTED.
- SLOPE FLOOR TO FLOOR DRAINS.
- OWNER TO PROVIDE WOOD FOR INTERIOR STAIRS, CONTRACTOR TO INSTALL.
- REFER TO TYPICAL WALL ELEVATION ON 1/A7.01 FOR WALL FINISHES. OWNER PROVIDED, CONTRACTOR INSTALLED WOOD PANELING.
- CONTRACTOR PROVIDE, CONTRACTOR INSTALLED CORRUGATED METAL WALL PANELS.

THRASHER

600 WHITE OAKS BLVD.
P.O. BOX 940
BRIDGEPORT, WV 26330

P (304) 624-4108
F (304) 624-7831

www.thrashergroup.com

THE INFORMATION CONTAINED HEREIN IS THE SOLE PROPERTY OF THE THRASHER GROUP, INC. REPRODUCTION OF THESE DOCUMENTS IN WHOLE, OR IN PART FOR ANY REASON WITHOUT PRIOR WRITTEN PERMISSION IS STRICTLY PROHIBITED.
COPYRIGHT © 2025
THE THRASHER GROUP, INC.



8/20/2025 ADDENDUM 1

CITY OF RAVENSWOOD WELCOME
CENTER/BUSINESS INCUBATOR
CITY OF RAVENSWOOD
RAVENSWOOD, WV
JULY 23, 2025
CONSTRUCTION DOCUMENTS

DRAWN: ALB DATE: 07/23/24
CHECKED: AJC DATE: 07/23/24
PROJECT No. T60-11456

SECOND FLOOR &
ROOF PLANS

SHEET No.

A1.02

