

**PEA RIDGE PUBLIC SERVICE DISTRICT
CABELL COUNTY, WEST VIRGINIA**

**CONTRACT #7 – COX LANDING ALONG WV ROUTE 2 NORTH
SANITARY SEWER EXTENSION**

ADDENDUM #2

JULY 24, 2023

THRASHER PROJECT #020-1392

TO WHOM IT MAY CONCERN:

The following are clarifications and responses to questions posed by Contractors for the above referenced project.

A. GENERAL

1. **The bid date has been moved. The new bid date is Thursday, August 3, 2023 at 2:00 pm at the Pea Ridge Public Service District Operations Building located at 500 Nova Street, Huntington, WV 25705..**
2. The last day for Questions will be COB Wednesday July 26, 2023.
3. The bid form has been revised. **YOU MUST USE THE ATTACHED BID FORM INCLUDED WITH THIS ADDENDUM # 2 WHEN PREPARING YOUR BID PACKAGE.**
4. Wage Rates will be included with the final Addendum.

B. SPECIFICATIONS

1. **INSERT** Section 400578.23 Included with this Addendum #2.

C. DRAWINGS

1. **REMOVE** Index and **REPLACE** with Index included with this Addendum #2.
2. **REMOVE** Sheet 2 and **REPLACE** with Sheet 2 included with this Addendum #2.
3. **REMOVE** Sheet 8A and **REPLACE** with Sheet 8A included with this Addendum #2.
4. **REMOVE** Sheet 8B and **REPLACE** with Sheet 8B included with this Addendum #2.
5. **INSERT** Sheet DET-7 included with this Addendum #2.

D. QUESTIONS AND RESPONSES

1. QUESTION

Can you provide a detail for bid item 21, “2” force main cleanout?”. The detail on sheet DET-4 only cover 3” and larger force main.

RESPONSE

A detail has been provided on sheet DET-7 included with this addendum.

2. QUESTION

Bid Item 12 calls for material to be 3” DR-14 c900 pipe. This pipe is not available. Can you provide an acceptable alternate?

RESPONSE

The bid item has been changed to 3” PVC SDR-17 pipe.

E. CLARIFICATIONS

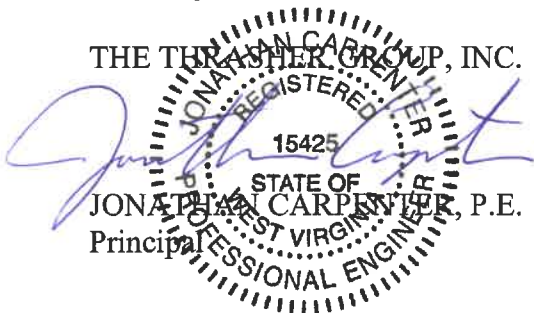
NOT APPLICABLE.

If you have any questions or comments, please feel free to contact me at your earliest convenience. As a reminder, bids will be received until 2:00 p.m. on Thursday, August 3, 2023 at Pea Ridge Public Service District Operations Building, 500 Nova Street, Huntington, WV 25705. Good luck to everyone and thank you for your interest in the project.

Sincerely,

THE THRASHER GROUP, INC.

JONATHAN CARPENTIER, P.E.
Principal



BID FORM FOR CONSTRUCTION CONTRACT

The terms used in this Bid with initial capital letters have the meanings stated in the Instructions to Bidders, the General Conditions, and the Supplementary Conditions.

ARTICLE 1—OWNER AND BIDDER

- 1.01 This Bid is submitted to:
*Pea Ridge Public Service District
500 Nova Street
Huntington, WV 25701*
- 1.02 The undersigned Bidder proposes and agrees, if this Bid is accepted, to enter into an Agreement with Owner in the form included in the Bidding Documents to perform all Work as specified or indicated in the Bidding Documents for the prices and within the times indicated in this Bid and in accordance with the other terms and conditions of the Bidding Documents.

ARTICLE 2—ATTACHMENTS TO THIS BID

- 2.01 The following documents are submitted with and made a condition of this Bid:
- A. Bid Opening Requirements
- Note: Bid Opening Requirements (BOR-18) includes the American Iron and Steel Certification which needs to be filled out and signed by the Contractor.

ARTICLE 3—BASIS OF BID—LUMP SUM BID AND UNIT PRICES

GENERAL

The Bidder shall take notice of and shall be responsible for any local or state taxes levied and applicable, and the cost for the same shall be included as part of the submitted Bid.

The total Bid cost stated includes a complete operating installation including furnishing and installation of any and all changes or additions in plans, piping, mechanical work, additional electrical work, accessories, controls, etc. necessary to accommodate alternative equipment systems or materials used in construction.

BID PROPOSAL

The Bidder agrees to perform all required Work described in the detailed Specifications and as shown on the Plans for the complete construction and placing in satisfactory operation the Contract #7 – Cox Landing Along WV Route 2 North Sanitary Sewer Extension. The Project "Sequence of Construction" has been detailed in the Drawings and Specification Division 1, Project Summary, Section 011000. The Bidder agrees to perform all the Work proposed for the total of the following Bid prices.

3.01 *Lump Sum Bids*

- A. Bidder will complete the Work in accordance with the Contract Documents for the lump sum (stipulated) price(s), together with any Unit Prices indicated in Paragraph 3.02 and shown in the bid schedule.
- B. Lump Sum Bids may be one of the following:
 - 1. Lump Sum Price (Single Lump Sum)
 - 2. Lump Sum Price (Base Bid and Alternates)
 - 3. Lump Sum Price (Sectional Lump Sum Bids)
- C. All specified cash allowance(s) are included in the price(s) set forth in the bid schedule, and have been computed in accordance with Paragraph 13.02 of the General Conditions.
- D. All specified contingency allowances are included in the price(s) set forth in the bid schedule, and have been computed in accordance with Paragraph 13.02 of the General Conditions.

3.02 *Unit Price Bids*

- A. Bidder will perform the following Work at the indicated unit prices as shown in the Bid Schedule.
- B. Bidder acknowledges that:
 - 1. each Bid Unit Price includes an amount considered by Bidder to be adequate to cover Contractor's overhead and profit for each separately identified item, and
 - 2. estimated quantities are not guaranteed, and are solely for the purpose of comparison of Bids, and final payment for all Unit Price Work will be based on actual quantities, determined as provided in the Contract Documents.

3.03 *Total Bid Price (Lump Sum and Unit Prices)*

BID SCHEDULE

**PROPOSED
 CONTRACT #7 – COX LANDING ALONG WV ROUTE 2 NORTH SANITARY SEWER EXTENSION
 FOR THE**

**PEA RIDGE PUBLIC SERVICE DISTRICT
 CABELL COUNTY, WEST VIRGINIA**

NOTE: Bid PRICE amounts are to be shown in both words and figures. In case of discrepancy, the amount shown in words will govern. Bids shall include applicable taxes and fees.

Item #	Qty.	UNIT	DESCRIPTION	UNIT PRICE	UNIT PRICE WRITTEN IN WORDS	TOTAL PRICE
1	1	LS	Mobilization/Demobilization			
2	1	LS	Erosion & Sediment Control			
3	1	LS	Videotaping of Project Area			
4a	10,150	LF	8” PVC SDR-35 Gravity Sewer Line (0’-6’)			

Item #	Qty.	UNIT	DESCRIPTION	UNIT PRICE	UNIT PRICE WRITTEN IN WORDS	TOTAL PRICE
4b	2,700	LF	8" PVC SDR-35 Gravity Sewer Line (6'-9')			
4c	1,400	LF	8" PVC SDR-35 Gravity Sewer Line (9'-12')			
4d	750	LF	8" PVC SDR-35 Gravity Sewer Line (12'+)			
5a	3,700	LF	6" PVC SDR-35 Gravity Sewer Line (0'-6')			
5b	150	LF	6" PVC SDR-35 Gravity Sewer Line (6'-9')			
6a	2,150	LF	8" DIP Gravity Sewer Line (0'-6')			
6b	1,650	LF	8" DIP Gravity Sewer Line (6'-9')			

Item #	Qty.	UNIT	DESCRIPTION	UNIT PRICE	UNIT PRICE WRITTEN IN WORDS	TOTAL PRICE
6c	950	LF	8" DIP Gravity Sewer Line (9'-12')			
6d	2,750	LF	8" DIP Gravity Sewer Line (12'+)			
7	60	LF	6" DIP Gravity Sewer Line (0'-6')			
8	800	LF	3" HDPE DR-11 Forcemain			
9	200	LF	1-1/2" HDPE DR-11 Forcemain			
10	1,100	LF	3" HDPE DR-11 Forcemain (Same Trench as Gravity Sewer)			
11	350	LF	4" PVC SDR-17 Forcemain			

Item #	Qty.	UNIT	DESCRIPTION	UNIT PRICE	UNIT PRICE WRITTEN IN WORDS	TOTAL PRICE
12	300	LF	3" PVC SDR-17 Forcemain			
13	275	LF	2" PVC SDR-17 Forcemain			
14	1,700	LF	4" PVC SDR-17 Forcemain (Same Trench as Gravity Sewer)			
15	3,150	LF	3" PVC SDR-17 Forcemain (Same Trench as Gravity Sewer)			
16	550	LF	2" PVC SDR-17 Forcemain (Same Trench as Gravity Sewer)			
17	3	EA	1" Combination Vacuum/Air Release Valves			
18	1	EA	4" Forcemain Pressure Inline Cleanout			

Item #	Qty.	UNIT	DESCRIPTION	UNIT PRICE	UNIT PRICE WRITTEN IN WORDS	TOTAL PRICE
19	6	EA	3" Forcemain Pressure Inline Cleanout			
20	1	EA	2" Forcemain Pressure Inline Cleanout			
21	265	LF	16" Steel Casing (Bore and Jack)			
22	375	LF	12" Steel Casing (Bore and Jack)			
23	125	LF	8" Steel Casing (Bore and Jack)			
24	150	LF	6" Steel Casing (Bore and Jack)			
25	100	LF	4" Steel Casing (Bore and Jack)			

Item #	Qty.	UNIT	DESCRIPTION	UNIT PRICE	UNIT PRICE WRITTEN IN WORDS	TOTAL PRICE
26	80	LF	16" Steel Casing (Open Cut)			
27	20	LF	12" Steel Casing (Open Cut)			
28	90	EA	48" Diameter Manhole Base, Cone Top, Regular Casting			
29	16	EA	48" Diameter Drop Manhole			
30	265	VF	48" Diameter Manhole Riser Pipe			
31	150	EA	8"x4" PVC Wye Connection			
32	55	EA	6"x4" PVC Wye Connection			

Item #	Qty.	UNIT	DESCRIPTION	UNIT PRICE	UNIT PRICE WRITTEN IN WORDS	TOTAL PRICE
33	50	EA	8"x4" D.I. Wye Connection			
34	1	EA	6"x4" D.I. Wye Connection			
35	900	LF	4" DIP Customer Service Lateral			
36	3,050	LF	4" PVC Customer Service Lateral			
37	11	EA	8" Gravity Terminal Line Cleanouts			
38	22	EA	6" Gravity Terminal Line Cleanouts			
39	250	EA	4" Gravity Service Line Cleanouts			

Item #	Qty.	UNIT	DESCRIPTION	UNIT PRICE	UNIT PRICE WRITTEN IN WORDS	TOTAL PRICE
40	325	LF	WVDOH Type "A" Trench Repair			
41	7,250	LF	WVDOH Type "B" Trench Repair			
42	5,150	LF	WVDOH Type "C" Trench Repair			
43	11,850	LF	WVDOH Inspection Fees	\$3.37	Three dollars and thirty-seven cents	\$39,934.50
44a	500	LF	Driveway Repair (Concrete)			
44b	600	LF	Driveway Repair (HMA)			
44c	1,500	LF	Driveway Repair (Gravel)			

Item #	Qty.	UNIT	DESCRIPTION	UNIT PRICE	UNIT PRICE WRITTEN IN WORDS	TOTAL PRICE
45	1	EA	Grinder Pump Station			
46	12,250	LF	Reclamation of Disturbed Area			

TOTAL BID: _____
 (Words)

_____ (\$ _____)
 (Words) (Figures)

(Amounts are to be shown in both words and figures. In case of discrepancy, the amount shown in words will govern.)

NOTE: THE CONTRACTOR’S UNIT PRICES SHALL INCLUDE PURCHASE AND INSTALLATION, COMPLETE IN PLACE, PER BID ITEM IN ACCORDANCE WITH THE DETAILED SPECIFICATIONS.

Bidder acknowledges that (1) each Bid Unit Price includes an amount considered by Bidder to be adequate to cover Contractor’s overhead and profit for each separately identified item, and (2) estimated quantities are not guaranteed, and are solely for the purpose of comparison of Bids, and final payment for all unit price Bid items will be based on actual quantities, determined as provided in the Contract Documents.

3.04 *Method of Award*

If at the time this contract is to be awarded, the lowest total bid submitted by a qualified, responsive, responsible Bidder does not exceed the amount of funds then estimated by the Owner, as available to finance the contract, the construction contract will be awarded. If such bids exceeds such amount, the owner may reject all bids.

- A. Unit prices have been computed in accordance with paragraph 13.03.A of the General Conditions.
- B. Bidder acknowledges that estimated quantities are not guaranteed, and are solely for the purpose of comparison of Bids, and final payment for all Unit Price Bid items will be based on actual quantities, determined as provided in the Contract Documents.

3.05

~~ARTICLE 4 – BASIS OF BID – COST PLUS FEE~~

~~4.01 The Contract Price will be the Cost of the Work, determined as provided in Paragraph 13.01 of the General Conditions, together with the following fee, and subject to the Guaranteed Maximum Price.~~

~~4.02 Contractor’s Fee~~

- ~~A. Contractor’s fee will be [number] percent of the Cost of the Work. No fee will be payable on the basis of costs itemized as excluded in Paragraph 13.01.C of the General Conditions.

 - ~~1. The maximum amount payable by Owner as a percentage fee (Guaranteed Maximum Fee) will not exceed \$[insert cap amount], subject to increases or decreases for changes in the Work.~~~~
- ~~B. Contractor’s fee will be determined by applying the following percentages to the various portions of the Cost of the Work as defined in Article 13 of the General Conditions. No fee will be payable on the basis of costs itemized as excluded in Paragraph 13.01.C of the General Conditions:~~

Costs	Percent
Payroll costs (See Paragraph 13.01.B.1, General Conditions)	
Materials and Installed Equipment cost (GC 13.01.B.2)	
Amounts to be paid to Subcontractors (GC 13.01.B.3)	

Amount to be paid to special consultants (GC 13.01.B.4)	
Other costs (GC 13.01.B.5)	

1. ~~The maximum amount payable by Owner as a percentage fee (Guaranteed Maximum Fee) will not exceed \$[insert cap amount], subject to increases or decreases for changes in the Work.~~

C. ~~Contractor's fee will be the fixed sum of \$[number].~~

4.03 *Guaranteed Maximum Price*

A. ~~The Guaranteed Maximum Price to Owner of the Cost of the Work including Contractor's Fee will not exceed \$[Bidder fill in GMP].~~

Deleted

ARTICLE 5 — PRICE PLUS TIME BID

5.01 *Price Plus Time Contract Award (Stipulated Price Contract)*

A. ~~The Bidder to which an award of the Contract will be made will be determined in part on the basis of the Total Bid Price and the total number of calendar days to substantially complete the Work, in accordance with the following:~~

	Description		Amount
A	1. Total Bid Price		\$[number]
	2. Total number of calendar days to substantially complete the Work	[number] days	
	3. Liquidated Damages Rate (from Agreement)	\$[number]/day	
B	4. Adjustment Amount (2 x 3)		\$[number]
A+B	5. Amount for Comparison of Bids		\$[number]

B. ~~The purpose of the process in the table above is only to calculate the lowest price plus time (A+B) bid amount for bid comparison purposes. The price for completion of the Work (the Contract Price) is the Total Bid Price.~~

C. ~~Bonds required under Paragraph 6.01 of the General Conditions will be based on the Contract Price.~~

5.02 *Price Plus Time Contract Award (Cost Plus Fee with Guaranteed Maximum Price Contract)*

A. ~~The Bidder to which an award of Contract will be made will be determined in part on the basis of the Guaranteed Maximum Price and the total number of calendar days to substantially complete the Work, in accordance with the following:~~

	Description		Amount
A	1. Guaranteed Maximum Price		\$[number]
	2. Total number of calendar days to substantially complete the Work	[number] days	
	3. Liquidated Damages Rate (from Agreement)	\$[number]/day	
B	4. Adjustment Amount (2 x 3)		\$[number]
A+B	5. Amount for Comparison of Bids		\$[number]

~~B. The purpose of the process in the table above is only to calculate the lowest price plus time (A+B) bid amount for bid comparison purposes. The price for completion of the Work (the Contract Price) is based on the cost of the Work, plus a fee, subject to a guaranteed maximum price, as set forth in the Agreement.~~

~~C. Bonds required under Paragraph 6.01 of the General Conditions will be based on the Contract Price.~~

Deleted

ARTICLE 6—TIME OF COMPLETION

6.01 Bidder agrees that the Work will be substantially complete and will be completed and ready for final payment in accordance with Paragraph 15.06 of the General Conditions on or before the dates or within the number of calendar days indicated in the Agreement.

~~6.02 Bidder agrees that the Work will be substantially complete on or before [Bidder inserts date], and will be completed and ready for final payment in accordance with Paragraph 15.06 of the General Conditions on or before [Bidder inserts date].~~

Deleted

~~6.03 Bidder agrees that the Work will be substantially complete within [Bidder inserts number] calendar days after the date when the Contract Times commence to run as provided in Paragraph 4.01 of the General Conditions, and will be completed and ready for final payment in accordance with Paragraph 15.06 of the General Conditions within [Bidder inserts number] calendar days after the date when the Contract Times commence to run.~~

Deleted

6.04 Bidder accepts the provisions of the Agreement as to liquidated damages.

ARTICLE 7—BIDDER’S ACKNOWLEDGEMENTS: ACCEPTANCE PERIOD, INSTRUCTIONS, AND RECEIPT OF ADDENDA

7.01 *Bid Acceptance Period*

A. This Bid will remain subject to acceptance for 90 days after the Bid opening, or for such longer period of time that Bidder may agree to in writing upon request of Owner.

7.02 *Instructions to Bidders*

A. Bidder accepts all of the terms and conditions of the Instructions to Bidders, including without limitation those dealing with the disposition of Bid security.

7.03 *Receipt of Addenda*

A. Bidder hereby acknowledges receipt of the following Addenda:

Addendum Number	Addendum Date

ARTICLE 8—BIDDER’S REPRESENTATIONS AND CERTIFICATIONS

8.01 *Bidder’s Representations*

A. In submitting this Bid, Bidder represents the following:

1. Bidder has examined and carefully studied the Bidding Documents, including Addenda.
2. Bidder has visited the Site, conducted a thorough visual examination of the Site and adjacent areas, and become familiar with the general, local, and Site conditions that may affect cost, progress, and performance of the Work.
3. Bidder is familiar with all Laws and Regulations that may affect cost, progress, and performance of the Work, **including all American Iron and Steel requirements.**
4. Bidder has carefully studied the reports of explorations and tests of subsurface conditions at or adjacent to the Site and the drawings of physical conditions relating to existing surface or subsurface structures at the Site that have been identified in the Supplementary Conditions, with respect to the Technical Data in such reports and drawings.
5. Bidder has carefully studied the reports and drawings relating to Hazardous Environmental Conditions, if any, at or adjacent to the Site that have been identified in the Supplementary Conditions, with respect to Technical Data in such reports and drawings.
6. Bidder has considered the information known to Bidder itself; information commonly known to contractors doing business in the locality of the Site; information and observations obtained from visits to the Site; the Bidding Documents; and the Technical Data identified in the Supplementary Conditions or by definition, with respect to the effect of such information, observations, and Technical Data on (a) the cost, progress, and performance of the Work; (b) the means, methods, techniques, sequences, and procedures of construction to be employed by Bidder, if selected as Contractor; and (c) Bidder’s (Contractor’s) safety precautions and programs.
7. Based on the information and observations referred to in the preceding paragraph, Bidder agrees that no further examinations, investigations, explorations, tests, studies, or data are necessary for the performance of the Work at the Contract Price, within the Contract Times, and in accordance with the other terms and conditions of the Contract.
8. Bidder is aware of the general nature of work to be performed by Owner and others at the Site that relates to the Work as indicated in the Bidding Documents.
9. Bidder has given Engineer written notice of all conflicts, errors, ambiguities, or discrepancies that Bidder has discovered in the Bidding Documents, and of discrepancies between Site conditions and the Contract Documents, and the written resolution thereof by Engineer is acceptable to Contractor.
10. The Bidding Documents are generally sufficient to indicate and convey understanding of all terms and conditions for performance and furnishing of the Work.
11. The submission of this Bid constitutes an incontrovertible representation by Bidder that without exception the Bid and all prices in the Bid are premised upon performing and furnishing the Work required by the Bidding Documents.

8.02 *Bidder’s Certifications*

A. The Bidder certifies the following:

1. This Bid is genuine and not made in the interest of or on behalf of any undisclosed individual or entity and is not submitted in conformity with any collusive agreement or rules of any group, association, organization, or corporation.
2. Bidder has not directly or indirectly induced or solicited any other Bidder to submit a false or sham Bid.
3. Bidder has not solicited or induced any individual or entity to refrain from bidding.
4. Bidder has not engaged in corrupt, fraudulent, collusive, or coercive practices in competing for the Contract. For the purposes of this Paragraph 8.02.A:
 - a. Corrupt practice means the offering, giving, receiving, or soliciting of anything of value likely to influence the action of a public official in the bidding process.
 - b. Fraudulent practice means an intentional misrepresentation of facts made (a) to influence the bidding process to the detriment of Owner, (b) to establish bid prices at artificial non-competitive levels, or (c) to deprive Owner of the benefits of free and open competition.
 - c. Collusive practice means a scheme or arrangement between two or more Bidders, with or without the knowledge of Owner, a purpose of which is to establish bid prices at artificial, non-competitive levels.
 - d. Coercive practice means harming or threatening to harm, directly or indirectly, persons or their property to influence their participation in the bidding process or affect the execution of the Contract.

BIDDER hereby submits this Bid as set forth above:

Bidder:

(typed or printed name of organization)

By:

(individual's signature)

Name:

(typed or printed)

Title:

(typed or printed)

Date:

(typed or printed)

If Bidder is a corporation, a partnership, or a joint venture, attach evidence of authority to sign.

Attest:

(individual's signature)

Name:

(typed or printed)

Title:

(typed or printed)

Date:

(typed or printed)

Address for giving notices:

Bidder's Contact:

Name:

(typed or printed)

Title:

(typed or printed)

Phone:

Email:

Address:

Bidder's Contractor License No.: (if applicable)

Pea Ridge Public Service District
Contract #7 – Cox Landing Along WV Route 2 North Sanitary Sewer Extension

SECTION 400578.23 - AIR/VACUUM VALVES FOR WASTEWATER SERVICE

PART 1 - GENERAL

1.1 SUMMARY

- A. Section Includes: Air release/vacuum breaker valves for wastewater treatment facilities.
- B. Related Requirements:
 - 1. Section 099010 – Coating Systems for Wastewater Treatment Plants: Preparing, priming, and painting surfaces, including field-applied and equipment finishing.
 - 2. Section 400507 - Hangers and Supports for Process Piping: Anchors and supports.

1.2 REFERENCE STANDARDS

- A. American Water Works Association:
 - 1. AWWA C512 - Air-Release, Air/Vacuum, and Combination Air Valves for Waterworks Service.
- B. ASME International:
 - 1. ASME B16.1 - Gray Iron Pipe Flanges and Flanged Fittings: Classes 25, 125, and 250.
- C. ASTM International:
- D. SSPC – The Society for Protective Coatings:
 - 1. SSPC-SP 6 – Commercial Blast Cleaning

1.3 SUBMITTALS

- A. Section 013300 - Submittal Procedures: Requirements for submittals.
- B. Product Data: Submit manufacturer catalog information.
 - 1. Include AIS Certification for iron and steel products.
- C. Shop Drawings: Indicate materials, dimensions, weights, and end connections on assembly drawings.
- D. Manufacturer's Certificate: Certify that products meet or exceed specified requirements.
- E. Qualifications Statements:

Pea Ridge Public Service District
Contract #7 – Cox Landing Along WV Route 2 North Sanitary Sewer Extension

1. Submit qualifications for manufacturer.

1.4 CLOSEOUT SUBMITTALS

- A. Section 017000 - Execution and Closeout Requirements: Requirements for submittals.
- B. Project Record Documents: Record actual locations of air release/vacuum breaker valves.

1.5 QUALIFICATIONS

- A. Manufacturer: Company specializing in manufacturing products specified in this Section with minimum three (3) years' documented experience.

1.6 DELIVERY, STORAGE, AND HANDLING

- A. Section 016000 - Product Requirements: Requirements for transporting, handling, storing, and protecting products.
- B. Inspection: Accept materials on Site in manufacturer's original packaging and inspect for damage.
- C. Store materials according to manufacturer instructions.
- D. Protection:
 1. Protect materials from moisture and dust by storing in clean, dry location remote from construction operations areas.
 2. Furnish temporary end caps and closures on piping and fittings and maintain in place until installation.
 3. Provide additional protection according to manufacturer instructions.

1.7 EXISTING CONDITIONS

- A. Field Measurements:
 1. Verify field measurements prior to fabrication.
 2. Indicate field measurements on Shop Drawings.

PART 2 - PRODUCTS

2.1 AIR/VACUUM VALVES FOR WASTEWATER SERVICE

- A. Manufacturers:

Pea Ridge Public Service District
Contract #7 – Cox Landing Along WV Route 2 North Sanitary Sewer Extension

1. DeZurik.
2. Flomatic.
3. Val-Matic.
4. Engineer's Approved Equal

B. Description:

1. Type: Fully automatic, float operated.
2. Comply with AWWA C512.
3. Size: As indicated on Drawings.
4. Suitable for sewage service.
5. Valve Body Connections: Furnish two (2) inch NPT cleanout and one (1) inch NPT drain.
6. Pressure Rating: 740 psig.
7. Materials: Body and Cover: Comply with ASTM A536, ductile iron.

C. Connections:

1. End Connections:
 - a. Size three (3) Inches and Smaller: Threaded, NPT.
 - b. One (1) Inch Valves: Furnish two (2) inch inlet.
 - c. Size four (4) Inches and Larger: Flanged, ASME B16.1.
2. Valve Body Connections: Threaded, NPT.
3. Cleanout: two (2) inches.
4. Drain: one (1) inch.

D. Accessories:

1. Backwash accessories: Furnish three (3) additional NPT connections, including the following:
 - a. Inlet shutoff valve
 - b. Blowoff valve
 - c. Rubber supply hose
 - d. Quick-disconnect couplings.
2. Epoxy lining.

PART 3 - EXECUTION

3.1 EXAMINATION

- A. Section 017000 - Execution and Closeout Requirements: Requirements for installation examination.

Pea Ridge Public Service District
Contract #7 – Cox Landing Along WV Route 2 North Sanitary Sewer Extension

- B. Verify that field dimensions are as indicated on Drawings.
- C. Inspect existing flanges for nonstandard bolt hole configurations or design and verify that new pipe and flanges mate properly.

3.2 PREPARATION

- A. Section 017000 - Execution and Closeout Requirements: Requirements for installation preparation.
- B. Thoroughly clean end connections before installation.
- C. Surface Preparation:
 - 1. Touch up shop-primed surfaces with primer as specified in Section 099010 – Coating Systems for Wastewater Treatment Plants.
 - 2. Solvent-clean surfaces that are not shop primed.
 - 3. Clean surfaces to remove loose rust, mill scale, and other foreign substances by commercial sand blasting; SSPC-SP 6.
 - 4. Prime surfaces as specified in Section 099010 – Coating Systems for Wastewater Treatment Plants.

3.3 INSTALLATION

- A. According to AWWA C512 and manufacturer instructions.
- B. Provide access for operation, removal, and maintenance, and to avoid discharge to occupied areas or other equipment.

3.4 FIELD QUALITY CONTROL

- A. Section 014000 - Quality Requirements: Requirements for inspecting and testing.
- B. Inspection:
 - 1. Inspect for damage to valve lining or coating and for other defects that may be detrimental as determined by Engineer.
 - 2. Repair damaged valve or provide new, undamaged valve.
 - 3. After installation, inspect for proper supports and interferences.
- C. Testing: Demonstrate operation without undue noise or vibration.

3.5 CLEANING

- A. Section 017000 - Execution and Closeout Requirements: Requirements for cleaning.

Pea Ridge Public Service District

Contract #7 – Cox Landing Along WV Route 2 North Sanitary Sewer Extension

- B. Keep interior of air release valves clean as installation progresses.
- C. After installation, clean valve interior of soil, grit, loose mortar, and other debris.

END OF SECTION 400578.23

Pea Ridge Public Service District

Contract #7 – Cox Landing Along WV Route 2 North Sanitary Sewer Extension

This page intentionally left blank.

WVDOH GENERAL NOTES

- ALL CONSTRUCTION ON THE DIVISION OF HIGHWAYS RIGHT OF WAY WILL CONFORM TO THE FOLLOWING:
THE FOLLOWING NOTES APPLY TO ALL PROJECT PLAN SHEETS
- NOTIFICATION OF PROPOSED EXCAVATION, DEMOLITION OR ANY OTHER EARTH DISTURBING ACTIVITIES ARE REQUIRED TO BE PLACED TO MISS UTILITY OF WEST VIRGINIA (1-800-245-4848) NOT LESS THAN FORTY EIGHT (48) BUSINESS HOURS BEFORE ANY SUCH WORK IS TO BEGIN.
 - BEDDING SHALL BE PLACED ON ASPHALT SURFACE TO PROTECT THE PAVEMENT WHEN A TRENCHER OR TRACKED VEHICLE IS USED.
 - THE WEST VIRGINIA DIVISION OF HIGHWAYS PUBLICATIONS "STANDARD SPECIFICATIONS ROADS AND BRIDGES" AND "ACCOMMODATIONS OF UTILITIES ON HIGHWAY RIGHT OF WAY" LATEST EDITION ARE PART OF THE PROJECT SPECIFICATIONS AND WILL BE ADHERED TO BY THE CONTRACTOR.
 - ALL DAMAGE TO ROAD SURFACE SHALL BE REPAIRED ACCORDING TO THE WEST VIRGINIA DIVISION OF HIGHWAYS STANDARD SPECIFICATIONS AND DETAILS.
 - ALL EXISTING DUMP ROCK OR RIP RAP DITCHES DISTURBED BY THE UTILITY LINE CONTRACTOR SHALL BE RESTORED WITH THE SAME SIZE, GRADE AND QUALITY OF ROCK AFTER THE WATER LINE HAS BEEN INSTALLED. NEW DUMP ROCK (RIP RAP) IS TO BE PLACED IN ALL LOCATIONS WHERE THE DITCH LINE GRADE IS GREATER THAN 5% AND THERE IS NO EXISTING RIP RAP.
 - TRAFFIC CONTROL SHALL CONFORM TO THE W.V.D.O.H. PUBLICATION "TRAFFIC CONTROL FOR STREET AND HIGHWAY CONSTRUCTION AND MAINTENANCE" OPERATION LATEST EDITION.
 - ALL BACKFILL MATERIAL AND COMPACTION REQUIREMENT SHALL BE IN ACCORDANCE WITH THE SPECIFICATIONS IN THE ACCOMMODATION OF UTILITIES ON HIGHWAY RIGHT OF WAY AND ADJUSTMENT AND RELOCATION OF UTILITY FACILITIES ON HIGHWAY PROJECTS AND SUBJECT TO D.O.H. APPROVAL. EVIDENCE OF PROPER COMPACTION BY TESTING WILL BE THE RESPONSIBILITY OF THE CONTRACTOR. THE TESTING SHALL BE ONE (1) PER DAY OR EVERY 500 LINEAL FEET OR AS DETERMINED BY THE DISTRICT MANAGER (ENGINEER) OR HIS AUTHORIZED REPRESENTATIVE.
 - UTILITY LINES OR OTHER LINES SHALL BE PLACED EITHER AROUND, UNDER OR OVER DRAINAGE CULVERTS AS SHOWN ON PLANS
 - AGGREGATE SHOULDER STONE IS TO BE PLACED ON THE SHOULDER AT A THICKNESS EQUAL TO 6" OR ITS ORIGINAL THICKNESS WHICHEVER IS GREATER. PAVED SHOULDERS WILL BE PAVED.
 - MAGNETIC MARKING TAPE SHALL BE INSTALLED AT A DEPTH OF 12" TO 18" BELOW THE SURFACE AND DIRECTLY ABOVE ALL LINES OR PIPE.
 - REPAIR TO DRIVEWAYS ON W.V.D.O.H. RIGHT OF WAYS SHALL CONFORM TO THE APPROPRIATE W.V.D.O.H. TYPICAL REPAIR DETAIL.
 - CLEANUP WILL BE ACCOMPLISHED DAILY. RIGHT OF WAYS SHALL CONFORM TO THE APPROPRIATE W.V.D.O.H. REPAIR. ALL CULVERTS AND DRAINAGE DITCHES SHALL BE OPEN AND MAINTAINED DURING CONSTRUCTION. SHOULDERS WILL BE RESTORED AND STABILIZED WITH STONE DAILY WITH APPROPRIATE STONE AT THE DISCRETION OF W.V.D.O.H.
 - ALL DISTURBED AREAS SHALL BE SEEDED AND MULCHED WITHIN SEVEN DAYS OF COMPLETION OF BACK FILL OPERATION.
 - NO EXCESS EXCAVATION MATERIAL SHALL BE WASTED ON W.V.D.O.H. RIGHT OF WAYS WITHOUT THE AGREEMENT OF THE W.V.D.O.H.
 - THE CONTRACTOR IS RESPONSIBLE FOR CONTACTING UTILITY COMPANIES, PRIOR TO CONSTRUCTION TO OBTAIN UTILITY LOCATIONS AND PERFORMING EXPLORATORY WORK TO DETERMINE SUBSURFACE MATERIALS AND STRUCTURES THAT MAY AFFECT ITS WORK.
 - PRIOR TO THE START OF ANY WORK WITHIN STATE HIGHWAY RIGHT-OF-WAY, THE CONTRACTOR SHALL GIVE THE WEST VIRGINIA DEPARTMENT OF TRANSPORTATION 48 HOURS NOTICE.
 - THE CONTRACTOR IS RESPONSIBLE FOR ANY OFFSITE DISPOSAL REQUIRED. DISPOSAL SHALL BE TO AN ACCEPTABLE LEGAL SITE CONTRACTOR IS RESPONSIBLE FOR EROSION CONTROL AT DISPOSAL SITES.
 - ALL ELEVATION GRADES AND DISTANCES SHALL BE CHECKED AND VERIFIED BY THE CONTRACTOR AT THE SITE PRIOR TO CONSTRUCTION
 - ALL CONSTRUCTION SHALL MAINTAIN 5' FROM EDGE OF PAVEMENT OR BOTTOM OF DITCH UNLESS NO OTHER PRACTICAL MEANS OF CONSTRUCTION EXISTS.
 - PERFORM ACCEPTABLE REPAIR OF ANY AND ALL SUB-BASE FAILURES THAT ARE CAUSED BY THE CONTRACTOR'S OPERATION ON A DAILY BASIS.
 - PERFORM TOTAL REPAIR AND/OR REPLACEMENT OF ANY DAMAGED ASPHALT SURFACE AS DETERMINED BY THE W.V.D.O.H REPRESENTATIVE.
 - PRIOR TO ANY CONSTRUCTION, THE CONTRACTOR SHALL MAKE A COMPLETE VIDEO SHOWING THE ROAD SURFACE OF THE ENTIRE PROJECT OF ROADS TO BE UTILIZED IN THE CONSTRUCTION OF THE PROJECT AND PRESENT IT TO UTILITY SUPERVISOR W.V.D.O.H.
 - REMOVE DITCH-LINE OBSTACLES AND/OR RECONSTRUCTION OF THE DITCH-LINE.
 - IN THE CASE OF MANHOLES OR VALVES IF AT ALL POSSIBLE BE PLACED OUTSIDE THE ROADWAY, SHOULDER, OR DITCH LINE IF PLACED IN THE SHOULDER THERE IS TO BE A MINIMUM OF 6 INCHES OF COVER IN THE DITCH LINE THERE IS TO BE 12 INCHES OF COVER BETWEEN THE MANHOLE AND THE INVERT OF THE OF THE DITCH.
 - ANY MANHOLES OR VALVES OR VALVE BOXES PLACED IN THE ROADWAY WILL BE ON THE SAME PLANE AS THE ROADWAY AND SET FLUSH WITH ROADWAY.
 - ANY ROADS REQUIRING AN H.L.B.C. OVERLAY, FULL WIDTH OR PARTIAL, SHALL HAVE SHOULDER STONE FROM AN APPROVED SOURCE PLACED AS PER D.O.H. SPECIFICATIONS.
 - THE DEPARTMENT OF HIGHWAYS REQUIRES THERE BE NO WORK WITHIN THE DEPARTMENT'S RIGHT-OF-WAY DURING SNOW AND ICE REMOVAL. THERE MAY BE EXCEPTIONS FOR EMERGENCY AND CASE BY CASE SITUATIONS WITH NOTIFICATION TO THE DEPARTMENT.

GENERAL NOTES

- EXISTING UTILITIES
A.) EXISTING UTILITIES SHOWN ON PLANS WHERE EVIDENCE HAS BEEN FOUND OR PROVIDED BY LOCAL UTILITIES. EXACT DEPTH AND LOCATION OF UTILITY LINES NOT KNOWN. CONTRACTOR TO VERIFY UTILITY LOCATIONS PRIOR TO CROSSING BY CONTACTING MISS UTILITY AT 811 OR (1-800-245-4848) AND LOCAL UTILITY COMPANIES AS LISTED AND/OR NOT LISTED ON THIS SHEET.
B.) CONTRACTOR TO LOCATE WATER AND UTILITY SERVICES BEFORE BORING AND JACKING.
- RIGHT-OF-WAYS
A.) PRIVATE PROPERTY - TEMPORARY CONSTRUCTION EASEMENTS TO BE 25' (12.5' EITHER SIDE OF CENTERLINE) PERMANENT RIGHT-OF-WAY TO BE 15' (7.5' EITHER SIDE OF CENTERLINE).
B.) D.O.H. ROADWAYS - CONSTRUCTION RIGHT-OF-WAY TO BE HELD TO THE DEPARTMENT OF HIGHWAYS RIGHT-OF-WAY AND STILL MAINTAIN A SAFE TRAFFIC FLOW, UNLESS OTHERWISE SHOWN.
C.) PROPERTY LINES SHOWN ON PLANS ARE APPROXIMATE LOCATION AND INFORMATION SHOWN WAS TAKEN FROM TAX MAPS.
- WATER AND SEWER SEPARATION
A.) HORIZONTAL SEPARATION 10' MIN.
B.) VERTICAL SEPARATION 18" MIN.
- IN THE EVENT OF AN ERROR WITH THE PLANS SEEMS APPARENT, THE MATTER SHALL BE TAKEN UP WITH THE ENGINEER FOR CAREFUL REVIEW BEFORE PROCEEDING WITH CONSTRUCTION.
- ALL CONSTRUCTION SHALL CONFORM TO THE APPLICABLE STANDARDS AND SPECIFICATIONS PROVIDED IN A SEPARATE BOUND VOLUME.
- CONTRACTOR SHALL FIELD VERIFY EXISTING PIPE TYPES AND OUTSIDE DIAMETER PRIOR TO CONNECTION.
- ANY ROAD WAYS NOT SCHEDULED FOR REPAIRS AS SHOWN ON BID SCHEDULE AND ARE DAMAGED BY THE CONTRACTOR SHALL BE REPAIRED AT THE CONTRACTORS EXPENSE.

EROSION & SEDIMENT CONTROL NOTES

- ALL EROSION AND SEDIMENT MEASURES TO BE IN ACCORDANCE WITH WEST VIRGINIA ONLINE BMP MANUAL FOR STANDARD GUIDELINES AND SPECIFICATIONS AVAILABLE AT:
[HTTP://WWW.DEP.WV.GOV/WVE/PROGRAMS/STORMWATER/CSW/PAGES/ESC_BMP.ASPX](http://www.dep.wv.gov/wve/programs/stormwater/csw/pages/esc_bmp.aspx)
- EROSION AND SEDIMENT CONTROL MEASURES HAVE BEEN SHOWN ON PLANS AND DETAILED IN SPECIFICATIONS.
- DISTURBED AREA TO BE STABILIZED WITH TEMPORARY AND FINAL SEEDING AS DESCRIBED IN SPECIFICATIONS. WHERE CONSTRUCTION ACTIVITY WILL RESUME ON A PORTION OF THE SITE WITHIN 14 DAYS FROM WHEN ACTIVITIES CEASED, (E.G., THE TOTAL TIME PERIOD THAT CONSTRUCTION ACTIVITY IS TEMPORARILY HALTED IS LESS THAN 14 DAYS) THEN STABILIZATION MEASURES DO NOT HAVE TO BE INITIATED ON THAT PORTION OF THE SITE BY THE FOURTH DAY AFTER CONSTRUCTION ACTIVITIES HAVE TEMPORARILY CEASED. AREAS WHERE THE SEED HAS FAILED TO GERMINATE ADEQUATELY (UNIFORM PERENNIAL VEGETATIVE COVER WITH A DENSITY OF 70% WITHIN 30 DAYS AFTER SEEDING AND MULCHING MUST BE RESEED IMMEDIATELY, OR A SOON AS WEATHER CONDITIONS ALLOW. INSPECTION FREQUENCY 4 DAYS & WITHIN 24 HOURS OF PRECIPITATION EVENT 0.25" OR GREATER.
- TEMPORARY CONSTRUCTION RIGHT OF WAY LINE REPRESENTS LIMITS OF DISTURBANCE. WHERE PLANS DEPICT SEWER ALIGNMENT AS A SINGLE LINE, THE LOD IS ASSUMED TO BE 10-FEET WIDE. STORMWATER INLETS & DRAINS MUST BE PROTECTED WITH APPROPRIATE BMP'S.
- IN AREAS WHERE STORMWATER DRAINAGE WILL NOT FLOW INTO DESIGNATED ROAD SIDE DITCH, PERIMETER BMP'S MUST BE INSTALLED DOWN SLOPE OF DISTURBANCE.
- ALL BORE PITS OUTSIDE OF CONCRETE OR ASPHALT SURFACES SHALL HAVE BELTED SILT RETENTION FENCE. REFER TO EROSION AND SEDIMENT CONTROL DETAIL SHEETS.

LEGEND

	EXISTING SIGN
	EXISTING TELEPHONE/ELECTRIC POLE
	EXISTING GUARDRAIL
	EXISTING FIRE HYDRANT
	EXISTING WATER METER WITH EXISTING SERVICE LINE
	EXISTING SEPTIC TANK
	EXISTING GRAVITY SEWER
	EXISTING WATER LINE
	EXISTING GAS LINE
	EXISTING FENCE
	EXISTING STREAM/DITCHES/PONDS
	EXISTING STORM DRAIN
	EXISTING CATCH BASIN
	EXISTING TREE LINE
	EXISTING CONTOUR
	RESIDENCE TO RECEIVE NEW UTILITY SERVICE
	EXISTING PAVED/CONCRETE ROAD AND DRIVEWAYS
	EXISTING GRAVEL ROAD
	EXISTING SPOT ELEVATION
	EXISTING BASEMENT FINISHED FLOOR ELEVATION
	EXISTING GRAVITY MANHOLE
	EXISTING ROAD RIGHT OF WAY
	EXISTING PROPERTY LINE
	EXISTING OVERHEAD ELECTRIC
	EXISTING UNDERGROUND ELECTRIC CONDUIT
	PARCEL NUMBER
	PROPOSED WATER LINE
	PROPOSED WATER METER WITH NEW SERVICE LINE
	PROPOSED AIR RELEASE VALVE
	PROPOSED FIRE HYDRANT
	PROPOSED POST FLUSHING HYDRANT
	PROPOSED BORE PIT
	PROPOSED HIGH PRESSURE METER SERVICE
	PROPOSED LOW PRESSURE METER SERVICE
	PROPOSED CASINGS
	PROPOSED PERMANENT RIGHT OF WAY
	PROPOSED TEMPORARY CONSTRUCTION EASEMENT/LOD
	PROPOSED BELTED SILT RETENTION FENCE
	PROPOSED EROSION CONTROL MATTING
	PROPOSED USER NUMBER
	PROPOSED FENCE
	PROPOSED GRAVITY SEWER
	PROPOSED 4" SERVICE LATERAL
	PROPOSED GRAVITY MANHOLE
	PROPOSED GRAVITY CLEANOUT
	PROPOSED FORCEMAIN AIR/VAC RELEASE VALVE
	PROPOSED FORCEMAIN PRESSURE INLINE CLEANOUT
	PROPOSED UNDERGROUND ELECTRIC
	PROPOSED OVERHEAD ELECTRIC
	PROPOSED SPOT ELEVATION

SHEET INDEX

COVER	COVER SHEET	12	PLAN AND PROFILE
i	INDEX SHEET	12A	PROFILES
L	SHEET LAYOUT	13	PLAN AND PROFILE
1	PLAN AND PROFILE	GR-1	GRINDER STATIONS SITE PLAN
2	PLAN AND PROFILE	GR-2	GRINDER STATION DETAILS AND CONTROL PANEL
2A	PROFILES	SU-1	GRINDER STATIONS SITE UTILITY PLAN
3	PLAN AND PROFILE	E-1	GRINDER STATION ELECTRICAL RISER DIAGRAM
3A	PROFILES	DET-1	STANDARD DETAILS
4	PLAN AND PROFILE	DET-2	STANDARD DETAILS
5	PLAN AND PROFILE	DET-3	STANDARD DETAILS
5A	PROFILES	DET-4	STANDARD DETAILS
6	PLAN AND PROFILE	DET-5	STANDARD DETAILS
6A	PROFILES	DET-6	STANDARD DETAILS
7	PLAN AND PROFILE	DET-7	STANDARD DETAILS
7A	PROFILES	ES-1	EROSION AND SEDIMENT CONTROL DETAILS
8	PLAN SHEET	ES-2	EROSION AND SEDIMENT CONTROL DETAILS
8A	PROFILES	ES-3	EROSION AND SEDIMENT CONTROL DETAILS
8B	PROFILES	CH-1	CUSTOMER CHART
9	PLAN SHEET	CH-2	CUSTOMER CHART
9A	PROFILES		
9B	PROFILE		
10	PLAN AND PROFILE		
11	PLAN SHEET		
11A	PROFILES		
11B	PROFILES		

UTILITY AGENCIES SERVING PROJECT AREA

TELEPHONE COMCAST/XFINITY 51 6TH AVENUE, W HUNTINGTON, WV 25701 1-888-266-2278	WATER WEST VIRGINIA AMERICAN WATER 1-888-685-8660	MISS UTILITY 811 OR (1-800-245-4848)
ELECTRIC APPALACHIAN POWER 1-800-956-4237	GAS: MOUNTAINEER GAS COMPANY 2401 SISSONVILLE DRIVE CHARLESTON, WV 25387 1-800-834-2070	SEWER PEA RIDGE PSD 500 NOVA STREET HUNTINGTON, WV 25701 1-304-736-6711

**RESPONSE TEAMS
NATIONAL RESPONSE CENTER FOR REPORTING**

WEST VIRGINIA DIVISION OF HIGHWAYS
DISTRICT TWO
801 MADISON AVENUE
HUNTINGTON, WV 25712
1-304-558-5630

CHEMICAL OR OIL SPILLS
1-800-424-8802
STATE EMERGENCY SPILL NOTIFICATION
1-800-642-3074

AMBULANCE, FIRE, LAW ENFORCEMENT

**911
ADDENDUM #2**

JONATHAN C. CARPENTER, P.E. NO. 15425 DATE

CAD FILE: R:\2020\020-1382_Pea Ridge Phase II - Cox Landing\Drawing\Contract 7 - Cox Landing Along Rte 2\07-001-Index.dwg PLOT DATE/TIME: 7/24/2023 3:29 PM USER: kevin philips LAYOUT: INDEX

1	KMP	7/24/23	ADDENDUM #2 - ADDED DETAIL SHEET TO INDEX SHEET
NO.	BY	DATE	DESCRIPTION

SCALE: AS SHOWN
DRAWN: C. WILKINSON DATE: AUGUST 2022
CHECKED: J. CARPENTER DATE: AUGUST 2022
APPROVED: J. CARPENTER DATE: AUGUST 2022
SURVEY DATE:
SURVEY BY:
FIELD BOOK No.:

THRASHER
1000 CORPORATE LANDING
CHARLESTON, WV 25311
www.thrashereng.com

PHONE (304)-343-7601 FAX (304)-343-7604

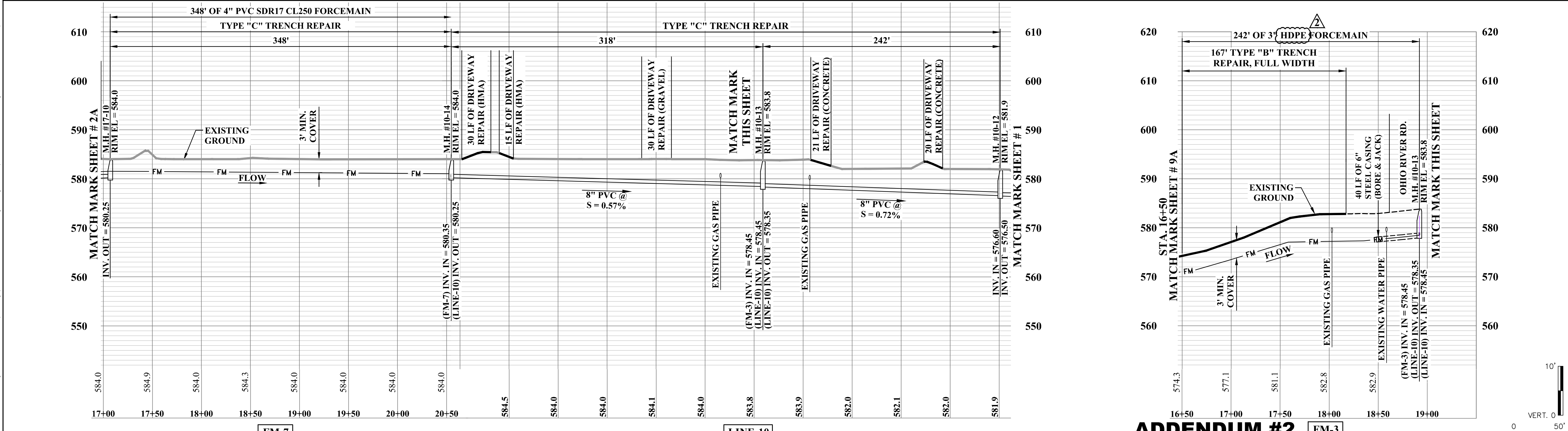
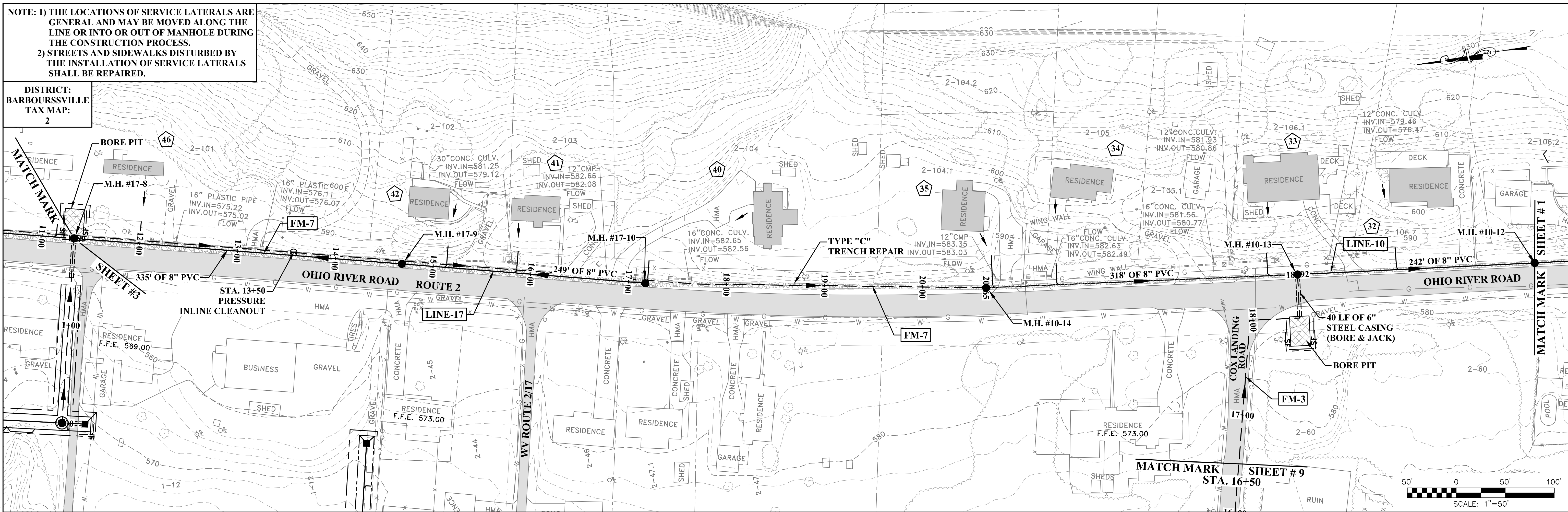
PHASE No.
2
CONTRACT No.
7
PROJECT No.
020-1392

PEA RIDGE PUBLIC SERVICE DISTRICT
CABELL COUNTY, WEST VIRGINIA
COX LANDING ALONG WV ROUTE 2 NORTH
SANITARY SEWER EXTENSION
INDEX SHEET

SHEET No.
i

NOTE: 1) THE LOCATIONS OF SERVICE LATERALS ARE GENERAL AND MAY BE MOVED ALONG THE LINE OR INTO OR OUT OF MANHOLE DURING THE CONSTRUCTION PROCESS.
 2) STREETS AND SIDEWALKS DISTURBED BY THE INSTALLATION OF SERVICE LATERALS SHALL BE REPAIRED.

DISTRICT:
 BARBOURSVILLE
 TAX MAP:
 2



THE INFORMATION CONTAINED HEREIN IS THE SOLE PROPERTY OF THE THRASHER GROUP INC. REPRODUCTION OF THESE DOCUMENTS IN WHOLE OR IN PART, FOR ANY REASON WITHOUT PRIOR WRITTEN PERMISSION, IS STRICTLY PROHIBITED. COPYRIGHT © 2022 THE THRASHER GROUP INC.

NO.	BY	DATE	DESCRIPTION
1	KMP	7/21/23	ADDENDUM #2 - UPDATED FORCEMAIN SIZE & MATERIAL

NO.	BY	DATE	DESCRIPTION

SCALE: AS SHOWN
 DRAWN: C. WILKINSON DATE: AUGUST 2022
 CHECKED: J. CARPENTER DATE: AUGUST 2022
 APPROVED: J. CARPENTER DATE: AUGUST 2022
 SURVEY DATE:
 SURVEY BY:
 FIELD BOOK No.:

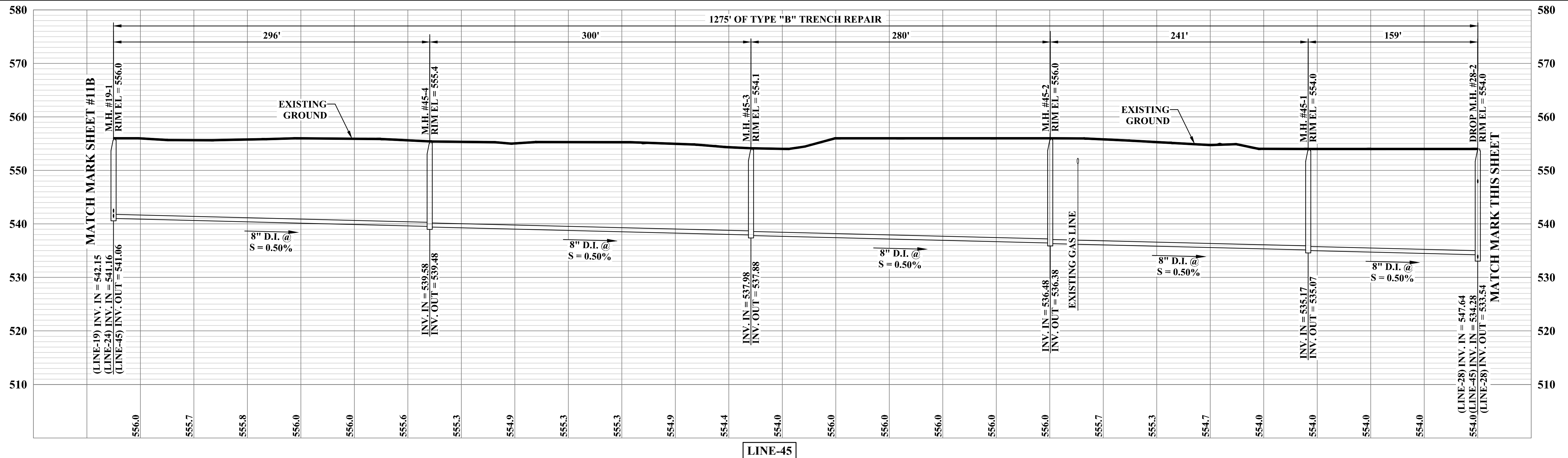
THRASHER
 1000 CORPORATE LANDING
 CHARLESTON, WV 25311
 www.thrashereng.com
 PHONE (304)-343-7601
 FAX (304)-343-7604

PHASE No.
 2
 CONTRACT No.
 7
 PROJECT No.
 020-1392

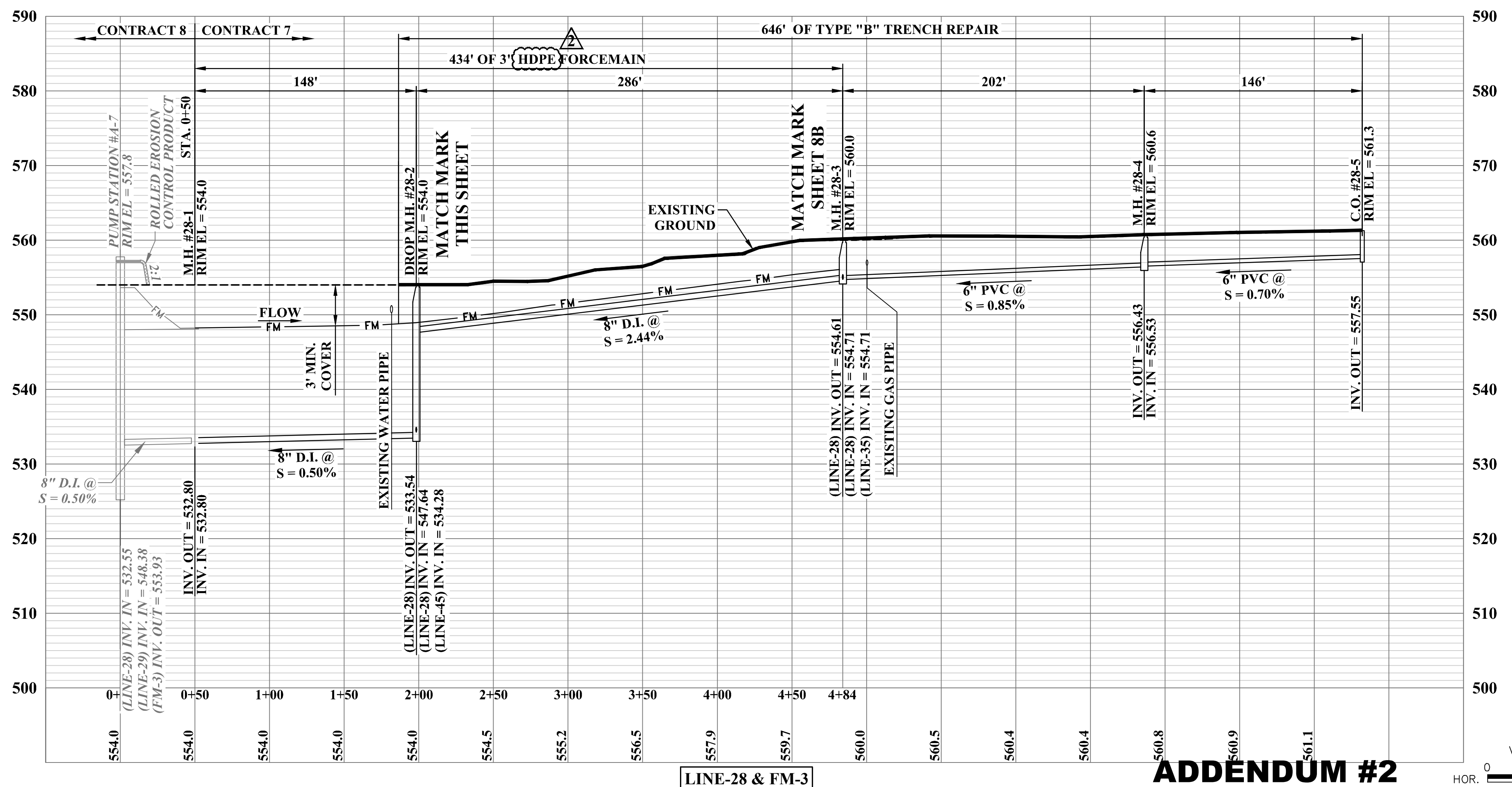
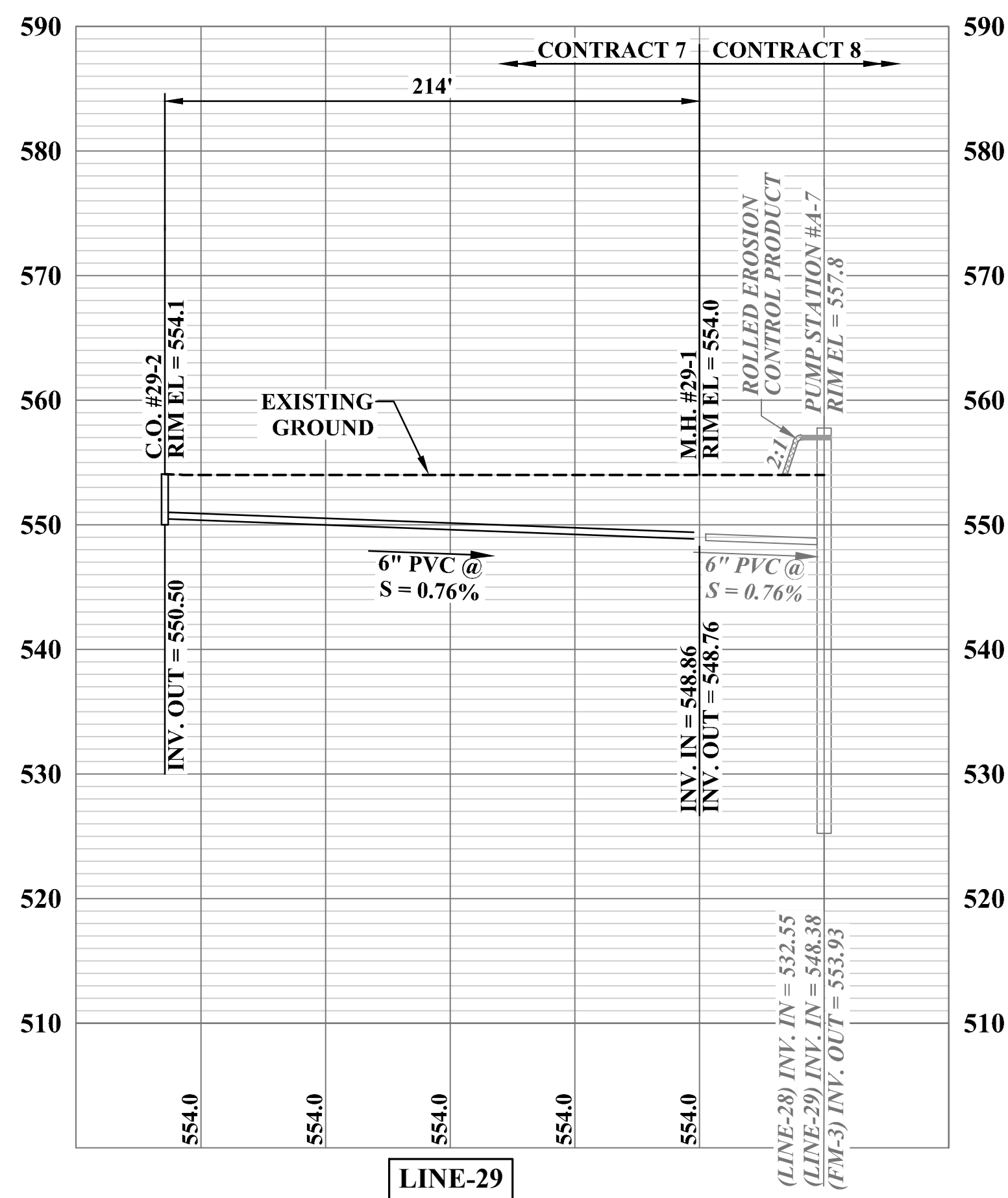
PEA RIDGE PUBLIC SERVICE DISTRICT
 CABELL COUNTY, WEST VIRGINIA
 COX LANDING ALONG WV ROUTE 2 NORTH
 SANITARY SEWER EXTENSION
 PLAN AND PROFILE

SHEET No.
2

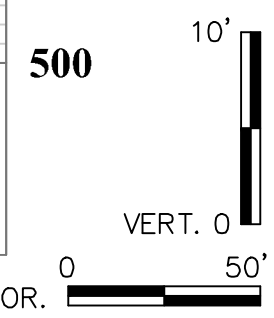
CAD FILE: R:\020\020-1382_Pea Ridge Phase II - Cox Landing Along Rte 2\07-01-Sheet 08.dwg
 PLOT DATE/TIME: 7/24/2023 10:47 AM
 LAYOUT: Sheet 8A
 USER: kevin.phillips



SEE SHEET #8 FOR PLAN VIEW



ADDENDUM #2



NO.	BY	DATE	DESCRIPTION
1	KMP	7/21/23	ADDENDUM #2 - UPDATED FORCEMAIN SIZE & MATERIAL

SCALE: AS SHOWN

DRAWN: C. WILKINSON DATE: AUGUST 2022

CHECKED: J. CARPENTER DATE: AUGUST 2022

APPROVED: J. CARPENTER DATE: AUGUST 2022

SURVEY DATE:

SURVEY BY:

FIELD BOOK No.:

THRASHER

1000 CORPORATE LANDING
 CHARLESTON, WV 25311
 www.thrashereng.com

PHONE (304)-343-7601 FAX (304)-343-7604

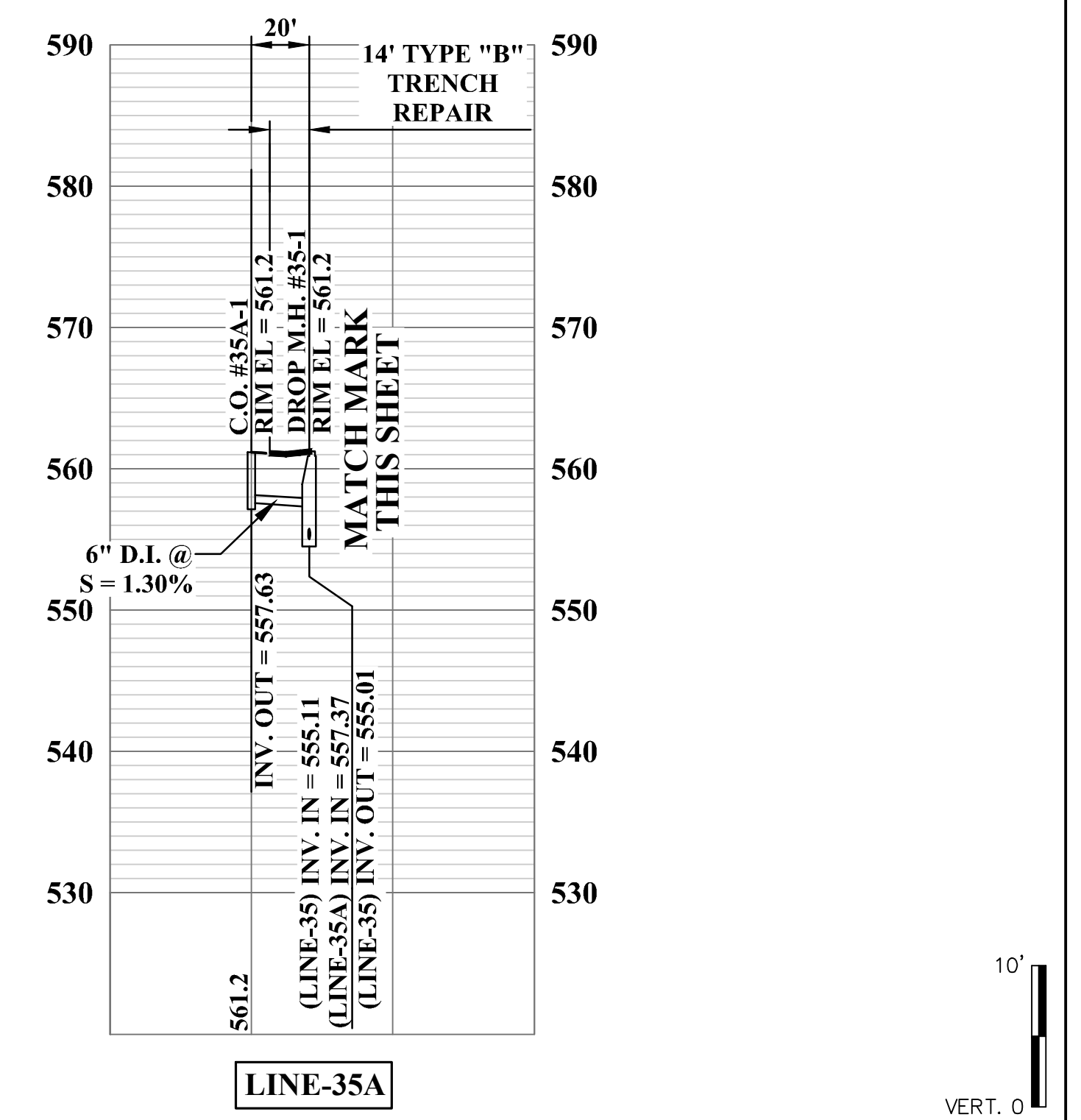
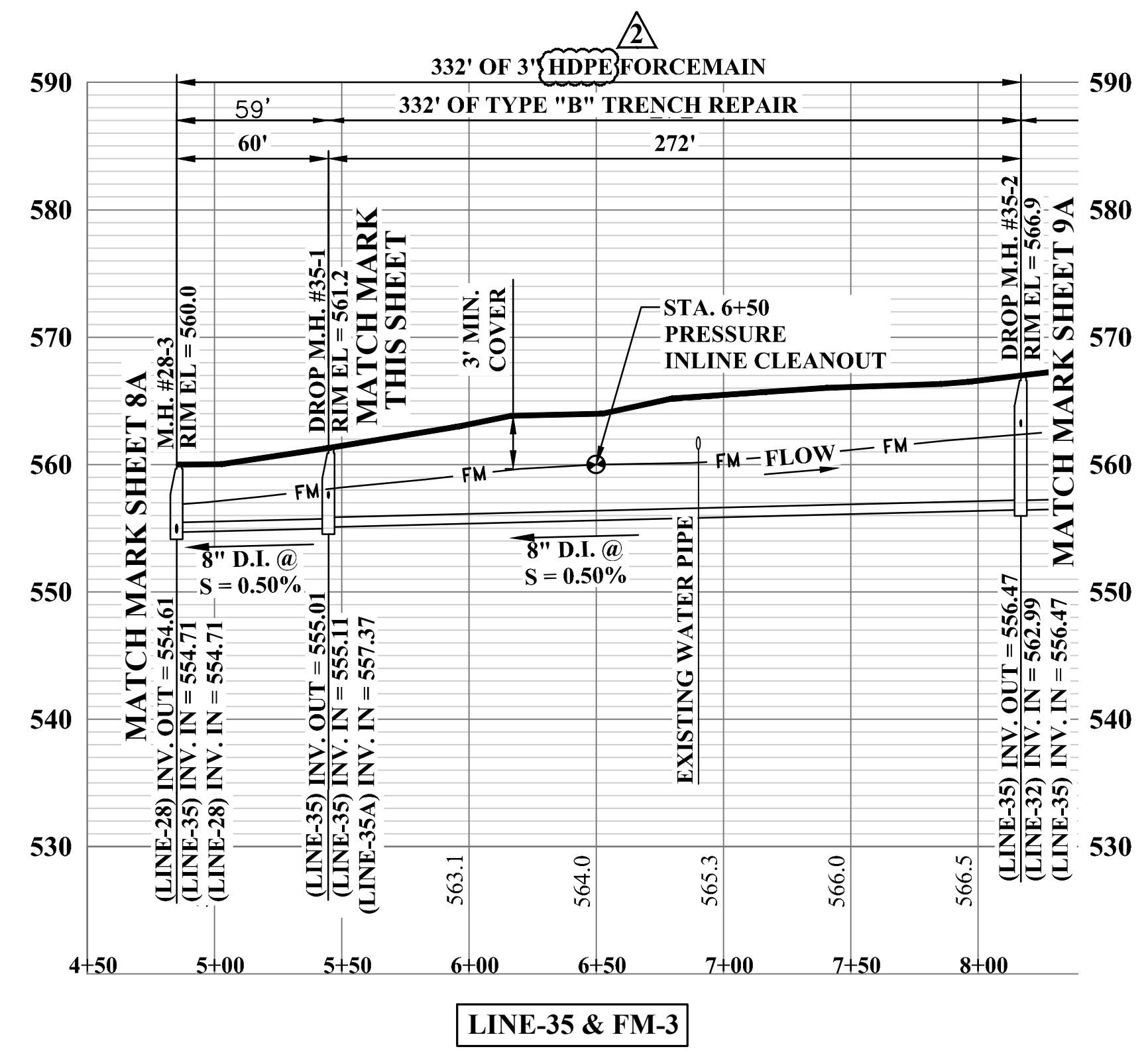
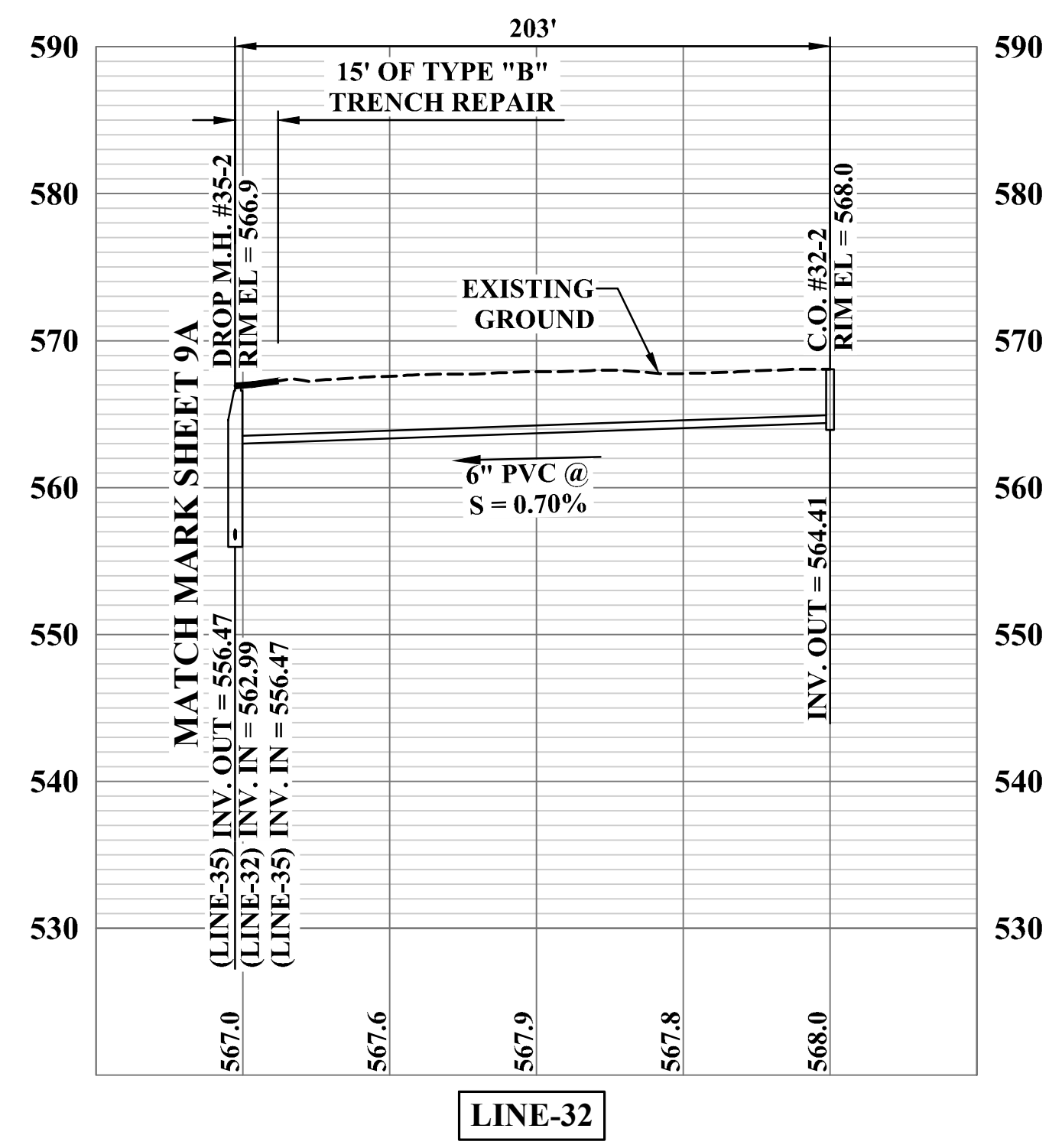
PHASE No.	2
CONTRACT No.	7
PROJECT No.	020-1392

PEA RIDGE PUBLIC SERVICE DISTRICT
 CABELL COUNTY, WEST VIRGINIA
 COX LANDING ALONG WV ROUTE 2 NORTH
 SANITARY SEWER EXTENSION
 PROFILES

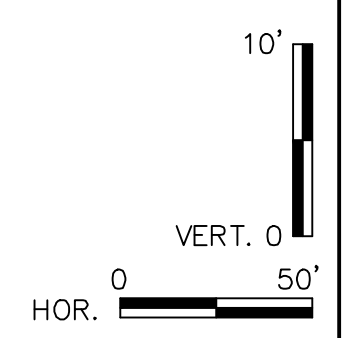
SHEET No.
8A

CAD FILE: R:\020\020-1392_Pea Ridge Phase II - Cox Landing Along Rte 2\07-01-Sheet 08.dwg PLOT DATE/TIME: 7/24/2023 10:48 AM USER: kevin phillips LAYOUT: Sheet 8B

SEE SHEET #8 FOR PLAN VIEW



ADDENDUM #2



NO.	BY	DATE	DESCRIPTION
1	KMP	7/21/23	ADDENDUM #2 - UPDATED FORCEMAIN SIZE & MATERIAL

NO.	BY	DATE	DESCRIPTION

SCALE: AS SHOWN	DRAWN: C. WILKINSON	DATE: AUGUST 2022
CHECKED: J. CARPENTER	DATE: AUGUST 2022	
APPROVED: J. CARPENTER	DATE: AUGUST 2022	
SURVEY DATE:		
SURVEY BY:		
FIELD BOOK No.:		

THRASHER

1000 CORPORATE LANDING
CHARLESTON, WV 25311
www.thrashereng.com

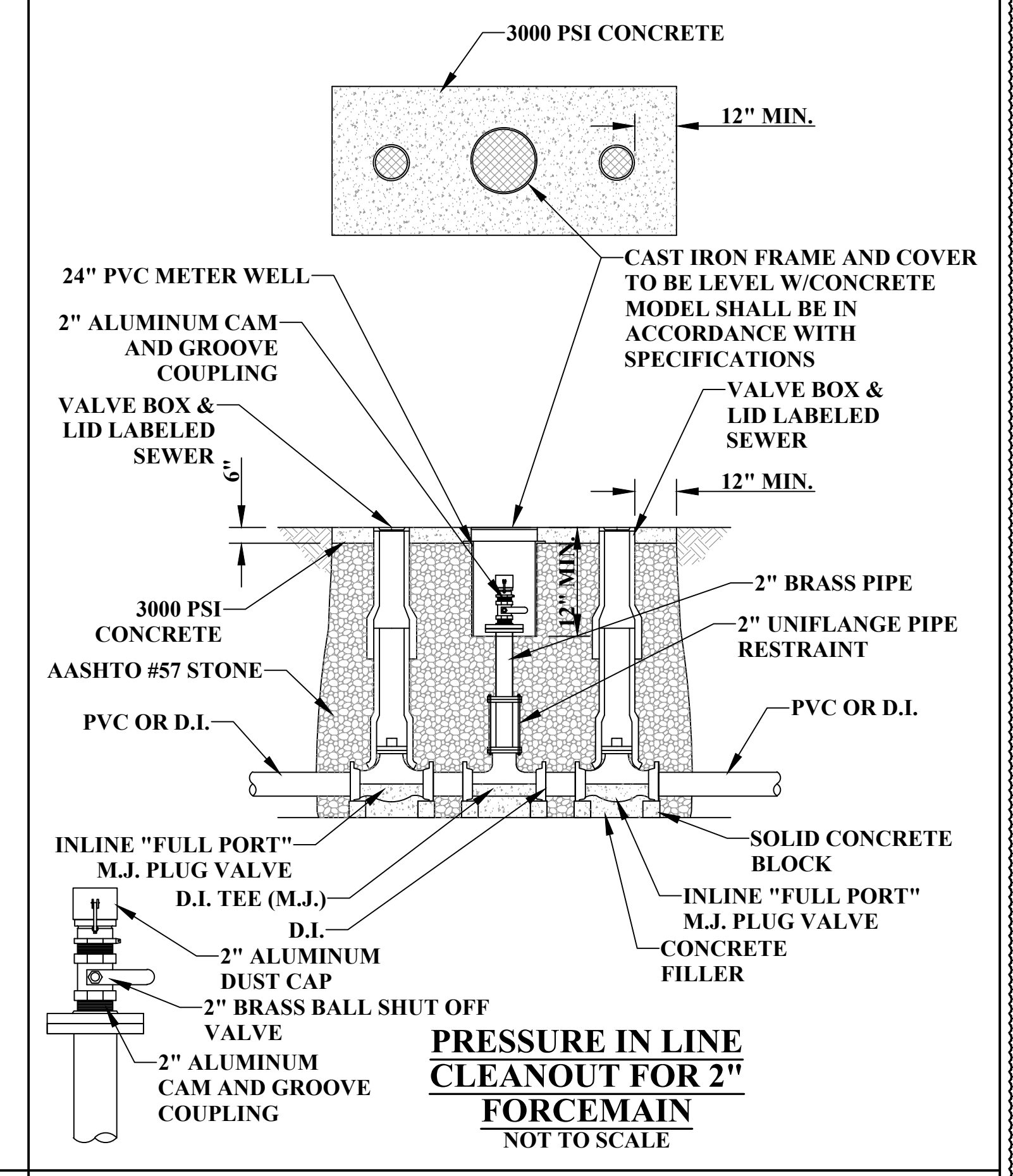
PHONE (304)-343-7601 FAX (304)-343-7604

PHASE No.	2
CONTRACT No.	7
PROJECT No.	020-1392

PEA RIDGE PUBLIC SERVICE DISTRICT
CABELL COUNTY, WEST VIRGINIA
COX LANDING ALONG WV ROUTE 2 NORTH
SANITARY SEWER EXTENSION
PROFILES

SHEET No.
8B

CAD FILE: R:\020\020-1392_Pea Ridge Phase II - Cox Landing Along Rte 2\C7-044-Standard Details.dwg
 PLOT DATE/TIME: 7/24/2023 3:25 PM
 LAYOUT: DET-7
 USER: kevin.phillips



ADDENDUM #2

NO.	BY	DATE	DESCRIPTION
1	KMP	7/24/23	ADDENDUM #2 - ADDED ADDITIONAL STANDARD DETAIL & SHEET

SCALE: AS SHOWN
DRAWN: C. WILKINSON DATE: AUGUST 2022
CHECKED: J. CARPENTER DATE: AUGUST 2022
APPROVED: J. CARPENTER DATE: AUGUST 2022
SURVEY DATE:
SURVEY BY:
FIELD BOOK No.:

THRASHER
 1000 CORPORATE LANDING
 CHARLESTON, WV 25311
 www.thrashereng.com

PHONE
(304)-343-7601
FAX
(304)-343-7604

PHASE No.	2
CONTRACT No.	7
PROJECT No.	020-1392

PEA RIDGE PUBLIC SERVICE DISTRICT
 CABELL COUNTY, WEST VIRGINIA
 COX LANDING ALONG WV ROUTE 2 NORTH
 SANITARY SEWER EXTENSION
 STANDARD DETAILS

SHEET No.
DET-7