



COMPLEX PROJECTS
REQUIRE RESOLVE
THRASHER'S GOT IT

PEA RIDGE PUBLIC SERVICE DISTRICT
CABELL COUNTY, WEST VIRGINIA

CONTRACT #3 – KYLE LANE TO COX LANDING SANITARY SEWER EXTENSION

ADDENDUM #2

JULY 24, 2023

THRASHER PROJECT #020-1392

TO WHOM IT MAY CONCERN:

The following are clarifications and responses to questions posed by Contractors for the above referenced project.

A. GENERAL

1. **The bid date has been moved. The new bid date is Thursday, August 3, 2023 at 2:00 pm at the Pea Ridge Public Service District Operations Building located at 500 Nova Street, Huntington, WV 25705.**
2. The last day for Questions will be COB Wednesday July 26, 2023.
3. The bid form has been revised. **YOU MUST USE THE ATTACHED BID FORM INCLUDED WITH THIS ADDENDUM # 2 WHEN PREPARING YOUR BID PACKAGE.**
4. Wage Rates will be included with the final Addendum.

B. SPECIFICATIONS

1. INSERT Section 400578.23 Included with this Addendum #2.

C. DRAWINGS

1. REMOVE Sheet 3 and REPLACE with Sheet 3 included with this Addendum #2.
2. REMOVE Sheet 3A and REPLACE with Sheet 3A included with this Addendum #2.
3. REMOVE Sheet 4A and REPLACE with Sheet 4A included with this Addendum #2.
4. REMOVE Sheet 5A and REPLACE with Sheet 5A included with this Addendum #2.
5. REMOVE Sheet 5B and REPLACE with Sheet 5B included with this Addendum #2.

D. QUESTIONS AND RESPONSES

1. QUESTION

Bid item 12 calls for 2.5" Sch30 PVC. This pipe is not available. Can you provide an acceptable alternate?

RESPONSE

The bid form and drawings have been revised. The bid item in question shall be 3" PVC SDR-17.

2. QUESTION

Will you add a bid item and detail for the 2.5" inline cleanout found on page 5 and referenced on page 5A of the contract drawings?

RESPONSE

The line size has been changed to 3". Bid item 17b has been added for the 3" inline cleanout, which is described in the existing Standard Detail on sheet DET-4.

3. QUESTION

Will you add a bid item and detail for the 1.5" inline cleanout found on page 3 and referenced on page 3A of the contract drawings?

RESPONSE

The 1.5" cleanout has been removed from the Drawings.

E. CLARIFICATIONS

NOT APPLICABLE.

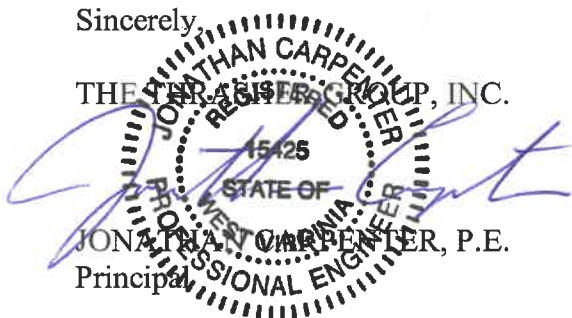
If you have any questions or comments, please feel free to contact me at your earliest convenience. As a reminder, bids will be received until 2:00 p.m. on Thursday, August 3, 2023 at Pea Ridge Public Service District Operations Building, 500 Nova Street, Huntington, WV 25705. Good luck to everyone and thank you for your interest in the project.

Sincerely,

THE TERRY GROUP, INC.

JONATHAN CARPENDER, P.E.

Principal



BID FORM FOR CONSTRUCTION CONTRACT

The terms used in this Bid with initial capital letters have the meanings stated in the Instructions to Bidders, the General Conditions, and the Supplementary Conditions.

ARTICLE 1—OWNER AND BIDDER

1.01 This Bid is submitted to:

*Pea Ridge Public Service District
500 Nova Street
Huntington, WV 25701*

1.02 The undersigned Bidder proposes and agrees, if this Bid is accepted, to enter into an Agreement with Owner in the form included in the Bidding Documents to perform all Work as specified or indicated in the Bidding Documents for the prices and within the times indicated in this Bid and in accordance with the other terms and conditions of the Bidding Documents.

ARTICLE 2—ATTACHMENTS TO THIS BID

2.01 The following documents are submitted with and made a condition of this Bid:

A. Bid Opening Requirements

Note: Bid Opening Requirements (BOR-9) includes the American Iron and Steel Certification which needs to be filled out and signed by the Contractor.

ARTICLE 3—BASIS OF BID—LUMP SUM BID AND UNIT PRICES

GENERAL

The Bidder shall take notice of and shall be responsible for any local or state taxes levied and applicable, and the cost for the same shall be included as part of the submitted Bid.

The total Bid cost stated includes a complete operating installation including furnishing and installation of any and all changes or additions in plans, piping, mechanical work, additional electrical work, accessories, controls, etc. necessary to accommodate alternative equipment systems or materials used in construction.

BID PROPOSAL

The Bidder agrees to perform all required Work described in the detailed Specifications and as shown on the Plans for the complete construction and placing in satisfactory operation the Contract #3 – Kyle Lane to Cox Landing Sanitary Sewer Extension. The Project "Sequence of Construction" has been detailed in the Drawings and Specification Division 1, Project Summary, Section 011000. The Bidder agrees to perform all the Work proposed for the total of the following Bid prices.

3.01 *Lump Sum Bids*

- A. Bidder will complete the Work in accordance with the Contract Documents for the lump sum (stipulated) price(s), together with any Unit Prices indicated in Paragraph 3.02 and shown in the bid schedule.
- B. Lump Sum Bids may be one of the following:
 - 1. Lump Sum Price (Single Lump Sum)
 - 2. Lump Sum Price (Base Bid and Alternates)
 - 3. Lump Sum Price (Sectional Lump Sum Bids)
- C. All specified cash allowance(s) are included in the price(s) set forth in the bid schedule, and have been computed in accordance with Paragraph 13.02 of the General Conditions.
- D. All specified contingency allowances are included in the price(s) set forth in the bid schedule, and have been computed in accordance with Paragraph 13.02 of the General Conditions.

3.02 *Unit Price Bids*

- A. Bidder will perform the following Work at the indicated unit prices as shown in the Bid Schedule.
- B. Bidder acknowledges that:
 - 1. each Bid Unit Price includes an amount considered by Bidder to be adequate to cover Contractor's overhead and profit for each separately identified item, and
 - 2. estimated quantities are not guaranteed, and are solely for the purpose of comparison of Bids, and final payment for all Unit Price Work will be based on actual quantities, determined as provided in the Contract Documents.

3.03 *Total Bid Price (Lump Sum and Unit Prices)*

BID SCHEDULE

**PROPOSED
 CONTRACT #3 – KYLE LANE TO COX LANDING SANITARY SEWER EXTENSION**

FOR THE

**PEA RIDGE PUBLIC SERVICE DISTRICT
 CABELL COUNTY, WEST VIRGINIA**

NOTE: Bid PRICE amounts are to be shown in both words and figures. In case of discrepancy, the amount shown in words will govern. Bids shall include sales tax and all other applicable taxes and fees.

Item #	Qty.	UNIT	DESCRIPTION	UNIT PRICE	UNIT PRICE WRITTEN IN WORDS	TOTAL PRICE
1	1	LS	Mobilization/Demobilization			
2	1	LS	Erosion & Sediment Control			
3	1	LS	Videotaping of Project Area			

Item #	Qty.	UNIT	DESCRIPTION	UNIT PRICE	UNIT PRICE WRITTEN IN WORDS	TOTAL PRICE
4a	1,050	LF	10" PVC SDR-35 Gravity Sewer Line (0'-6')			
4b	350	LF	10" PVC SDR-35 Gravity Sewer Line (6'-9')			
4c	10	LF	10" PVC SDR-35 Gravity Sewer Line (9'-12')			
4d	250	LF	10" PVC SDR-35 Gravity Sewer Line (12'+)			
5a	3,050	LF	8" PVC SDR-35 Gravity Sewer Line (0'-6')			
5b	800	LF	8" PVC SDR-35 Gravity Sewer Line (6'-9')			
5c	1,500	LF	8" PVC SDR-35 Gravity Sewer Line (9'-12')			

Item #	Qty.	UNIT	DESCRIPTION	UNIT PRICE	UNIT PRICE WRITTEN IN WORDS	TOTAL PRICE
5d	850	LF	8" PVC SDR-35 Gravity Sewer Line (12'+)			
6a	1,700	LF	6" PVC SDR-35 Gravity Sewer Line (0'-6')			
6b	300	LF	6" PVC SDR-35 Gravity Sewer Line (6'-9')			
6c	10	LF	6" PVC SDR-35 Gravity Sewer Line (9'-12')			
6d	250	LF	6" PVC SDR-35 Gravity Sewer Line (12'+)			
7a	1,200	LF	8" DIP Gravity Sewer Line (0'-6')			
7b	650	LF	8" DIP Gravity Sewer Line (6'-9')			

Item #	Qty.	UNIT	DESCRIPTION	UNIT PRICE	UNIT PRICE WRITTEN IN WORDS	TOTAL PRICE
8a	150	LF	6" DIP Gravity Sewer Line (0'-6')			
8b	70	LF	6" DIP Gravity Sewer Line (6'-9')			
9	1,700	LF	4" PVC SDR-17 Forcemain			
10	300	LF	4" PVC SDR-17 Forcemain (Same Trench as Gravity Sewer)			
11	275	LF	3" PVC SDR -17 Forcemain			
12	925	LF	3" PVC SDR-17 Forcemain (Same Trench as Gravity Sewer)			
13	450	LF	1-1/2" HDPE DR-11 Forcemain			

Item #	Qty.	UNIT	DESCRIPTION	UNIT PRICE	UNIT PRICE WRITTEN IN WORDS	TOTAL PRICE
14	700	LF	1-1/2" HDPE DR-11 Forcemain (Same Trench as Gravity Sewer)			
15	230	LF	1-1/4" HDPE DR-11 Forcemain			
16	5	EA	1" Combination Vacuum/Air Release Valves			
17a	4	EA	4" Forcemain Pressure Inline Cleanout			
17b	1	EA	3" Forcemain Pressure Inline Cleanout			
18	1,900	LF	4" PVC Customer Service Lateral			
19	600	LF	4" DIP Customer Service Lateral			

Item #	Qty.	UNIT	DESCRIPTION	UNIT PRICE	UNIT PRICE WRITTEN IN WORDS	TOTAL PRICE
20	125	LF	20" Steel Casing (Bore and Jack)			
21	300	LF	16" Steel Casing (Bore and Jack)			
22	40	LF	8" Steel Casing (Bore and Jack)			
23	70	LF	4" Steel Casing (Bore and Jack)			
24	80	LF	3" Steel Casing (Bore and Jack)			
25	50	LF	16" Steel Casing (Open Cut)			
26	1	EA	Grinder Pump Station			

Item #	Qty.	UNIT	DESCRIPTION	UNIT PRICE	UNIT PRICE WRITTEN IN WORDS	TOTAL PRICE
27	60	EA	48" Diameter Manhole Base, Cone Top, Regular Casting			
28	10	EA	48" Drop Manholes			
29	150	VF	48" Diameter Manhole Riser Pipe			
30	10	EA	10"x4" PVC Wye Connection			
31	40	EA	8"x4" PVC Wye Connection			
32	25	EA	6"x4" PVC Wye Connection			
33	20	EA	8"x4" D.I. Wye Connection			

Item #	Qty.	UNIT	DESCRIPTION	UNIT PRICE	UNIT PRICE WRITTEN IN WORDS	TOTAL PRICE
34	3	EA	6"x4" D.I. Wye Connection			
35	7	EA	8" Gravity Terminal Line Cleanout			
36	8	EA	6" Gravity Terminal Line Cleanout			
37	100	EA	4" Gravity Service Line Cleanout			
38	2,050	LF	WVDOH Type "B" Trench Repair			
39	2,000	LF	WVDOH Type "C" Trench Repair			
40	6,500	LF	WVDOH Inspection Fees	\$3.37	Three dollars and thirty-seven cents	\$21,905.00

Item #	Qty.	UNIT	DESCRIPTION	UNIT PRICE	UNIT PRICE WRITTEN IN WORDS	TOTAL PRICE
41a	250	LF	Driveway Repair (Concrete)			
41b	375	LF	Driveway Repair (HMA)			
41c	550	LF	Driveway Repair (Gravel)			
42	9,400	LF	Reclamation of Disturbed Area			

TOTAL BID: _____
 (Words)

_____ (\$ _____)
 (Words) (Figures)

(Amounts are to be shown in both words and figures. In case of discrepancy, the amount shown in words will govern.)

NOTE: THE CONTRACTOR'S UNIT PRICES SHALL INCLUDE PURCHASE AND INSTALLATION, COMPLETE IN PLACE, PER BID ITEM IN ACCORDANCE WITH THE DETAILED SPECIFICATIONS.

Bidder acknowledges that (1) each Bid Unit Price includes an amount considered by Bidder to be adequate to cover Contractor's overhead and profit for each separately identified item, and (2) estimated quantities are not guaranteed, and are solely for the purpose of comparison of Bids, and final payment for all unit price Bid items will be based on actual quantities, determined as provided in the Contract Documents.

3.04 *Method of Award*

If at the time this contract is to be awarded, the lowest total bid submitted by a qualified, responsive, responsible Bidder does not exceed the amount of funds then estimated by the Owner, as available to finance the contract, the construction contract will be awarded. If such bids exceeds such amount, the owner may reject all bids.

- A. Unit prices have been computed in accordance with paragraph 13.03.A of the General Conditions.
- B. Bidder acknowledges that estimated quantities are not guaranteed, and are solely for the purpose of comparison of Bids, and final payment for all Unit Price Bid items will be based on actual quantities, determined as provided in the Contract Documents.

3.05

ARTICLE 4 — BASIS OF BID — COST PLUS FEE

4.01 ~~The Contract Price will be the Cost of the Work, determined as provided in Paragraph 13.01 of the General Conditions, together with the following fee, and subject to the Guaranteed Maximum Price.~~

4.02 *Contractor's Fee*

- A. ~~Contractor's fee will be [number] percent of the Cost of the Work. No fee will be payable on the basis of costs itemized as excluded in Paragraph 13.01.C of the General Conditions.~~
 - 1. ~~The maximum amount payable by Owner as a percentage fee (Guaranteed Maximum Fee) will not exceed \$[insert cap amount], subject to increases or decreases for changes in the Work.~~
- B. ~~Contractor's fee will be determined by applying the following percentages to the various portions of the Cost of the Work as defined in Article 13 of the General Conditions. No fee will be payable on the basis of costs itemized as excluded in Paragraph 13.01.C of the General Conditions:~~

Costs	Percent
Payroll costs (See Paragraph 13.01.B.1, General Conditions)	
Materials and Installed Equipment cost (GC 13.01.B.2)	
Amounts to be paid to Subcontractors (GC 13.01.B.3)	

Amount to be paid to special consultants (GC 13.01.B.4)	
Other costs (GC 13.01.B.5)	

1. ~~The maximum amount payable by Owner as a percentage fee (Guaranteed Maximum Fee) will not exceed \$[insert cap amount], subject to increases or decreases for changes in the Work.~~

C. ~~Contractor's fee will be the fixed sum of \$[number].~~

4.03 *Guaranteed Maximum Price*

A. ~~The Guaranteed Maximum Price to Owner of the Cost of the Work including Contractor's Fee will not exceed \$[Bidder fill in GMP].~~

Deleted

ARTICLE 5 — PRICE PLUS TIME BID

5.01 *Price Plus Time Contract Award (Stipulated Price Contract)*

A. ~~The Bidder to which an award of the Contract will be made will be determined in part on the basis of the Total Bid Price and the total number of calendar days to substantially complete the Work, in accordance with the following:~~

	Description		Amount
A	1. Total Bid Price		\$(number)
	2. Total number of calendar days to substantially complete the Work	[number] days	
	3. Liquidated Damages Rate (from Agreement)	\$(number)/day	
B	4. Adjustment Amount (2 x 3)		\$(number)
A+B	5. Amount for Comparison of Bids		\$(number)

B. ~~The purpose of the process in the table above is only to calculate the lowest price plus time (A+B) bid amount for bid comparison purposes. The price for completion of the Work (the Contract Price) is the Total Bid Price.~~

C. ~~Bonds required under Paragraph 6.01 of the General Conditions will be based on the Contract Price.~~

5.02 *Price Plus Time Contract Award (Cost Plus Fee with Guaranteed Maximum Price Contract)*

A. ~~The Bidder to which an award of Contract will be made will be determined in part on the basis of the Guaranteed Maximum Price and the total number of calendar days to substantially complete the Work, in accordance with the following:~~

	Description		Amount
A	1. Guaranteed Maximum Price		\$(number)
	2. Total number of calendar days to substantially complete the Work	[number] days	
	3. Liquidated Damages Rate (from Agreement)	\$(number)/day	
B	4. Adjustment Amount (2 x 3)		\$(number)
A+B	5. Amount for Comparison of Bids		\$(number)

~~B. The purpose of the process in the table above is only to calculate the lowest price plus time (A+B) bid amount for bid comparison purposes. The price for completion of the Work (the Contract Price) is based on the cost of the Work, plus a fee, subject to a guaranteed maximum price, as set forth in the Agreement.~~

~~C. Bonds required under Paragraph 6.01 of the General Conditions will be based on the Contract Price.~~

Deleted

ARTICLE 6—TIME OF COMPLETION

6.01 Bidder agrees that the Work will be substantially complete and will be completed and ready for final payment in accordance with Paragraph 15.06 of the General Conditions on or before the dates or within the number of calendar days indicated in the Agreement.

~~6.02 Bidder agrees that the Work will be substantially complete on or before [Bidder inserts date], and will be completed and ready for final payment in accordance with Paragraph 15.06 of the General Conditions on or before [Bidder inserts date].~~

Deleted

~~6.03 Bidder agrees that the Work will be substantially complete within [Bidder inserts number] calendar days after the date when the Contract Times commence to run as provided in Paragraph 4.01 of the General Conditions, and will be completed and ready for final payment in accordance with Paragraph 15.06 of the General Conditions within [Bidder inserts number] calendar days after the date when the Contract Times commence to run.~~

Deleted

6.04 Bidder accepts the provisions of the Agreement as to liquidated damages.

ARTICLE 7—BIDDER’S ACKNOWLEDGEMENTS: ACCEPTANCE PERIOD, INSTRUCTIONS, AND RECEIPT OF ADDENDA

7.01 *Bid Acceptance Period*

A. This Bid will remain subject to acceptance for 90 days after the Bid opening, or for such longer period of time that Bidder may agree to in writing upon request of Owner.

7.02 *Instructions to Bidders*

A. Bidder accepts all of the terms and conditions of the Instructions to Bidders, including without limitation those dealing with the disposition of Bid security.

7.03 *Receipt of Addenda*

A. Bidder hereby acknowledges receipt of the following Addenda:

Addendum Number	Addendum Date

ARTICLE 8—BIDDER’S REPRESENTATIONS AND CERTIFICATIONS

8.01 *Bidder’s Representations*

A. In submitting this Bid, Bidder represents the following:

1. Bidder has examined and carefully studied the Bidding Documents, including Addenda.
2. Bidder has visited the Site, conducted a thorough visual examination of the Site and adjacent areas, and become familiar with the general, local, and Site conditions that may affect cost, progress, and performance of the Work.
3. Bidder is familiar with all Laws and Regulations that may affect cost, progress, and performance of the Work, **including all American Iron and Steel requirements.**
4. Bidder has carefully studied the reports of explorations and tests of subsurface conditions at or adjacent to the Site and the drawings of physical conditions relating to existing surface or subsurface structures at the Site that have been identified in the Supplementary Conditions, with respect to the Technical Data in such reports and drawings.
5. Bidder has carefully studied the reports and drawings relating to Hazardous Environmental Conditions, if any, at or adjacent to the Site that have been identified in the Supplementary Conditions, with respect to Technical Data in such reports and drawings.
6. Bidder has considered the information known to Bidder itself; information commonly known to contractors doing business in the locality of the Site; information and observations obtained from visits to the Site; the Bidding Documents; and the Technical Data identified in the Supplementary Conditions or by definition, with respect to the effect of such information, observations, and Technical Data on (a) the cost, progress, and performance of the Work; (b) the means, methods, techniques, sequences, and procedures of construction to be employed by Bidder, if selected as Contractor; and (c) Bidder’s (Contractor’s) safety precautions and programs.
7. Based on the information and observations referred to in the preceding paragraph, Bidder agrees that no further examinations, investigations, explorations, tests, studies, or data are necessary for the performance of the Work at the Contract Price, within the Contract Times, and in accordance with the other terms and conditions of the Contract.
8. Bidder is aware of the general nature of work to be performed by Owner and others at the Site that relates to the Work as indicated in the Bidding Documents.
9. Bidder has given Engineer written notice of all conflicts, errors, ambiguities, or discrepancies that Bidder has discovered in the Bidding Documents, and of discrepancies between Site conditions and the Contract Documents, and the written resolution thereof by Engineer is acceptable to Contractor.
10. The Bidding Documents are generally sufficient to indicate and convey understanding of all terms and conditions for performance and furnishing of the Work.
11. The submission of this Bid constitutes an incontrovertible representation by Bidder that without exception the Bid and all prices in the Bid are premised upon performing and furnishing the Work required by the Bidding Documents.

8.02 *Bidder’s Certifications*

A. The Bidder certifies the following:

1. This Bid is genuine and not made in the interest of or on behalf of any undisclosed individual or entity and is not submitted in conformity with any collusive agreement or rules of any group, association, organization, or corporation.
2. Bidder has not directly or indirectly induced or solicited any other Bidder to submit a false or sham Bid.
3. Bidder has not solicited or induced any individual or entity to refrain from bidding.
4. Bidder has not engaged in corrupt, fraudulent, collusive, or coercive practices in competing for the Contract. For the purposes of this Paragraph 8.02.A:
 - a. Corrupt practice means the offering, giving, receiving, or soliciting of anything of value likely to influence the action of a public official in the bidding process.
 - b. Fraudulent practice means an intentional misrepresentation of facts made (a) to influence the bidding process to the detriment of Owner, (b) to establish bid prices at artificial non-competitive levels, or (c) to deprive Owner of the benefits of free and open competition.
 - c. Collusive practice means a scheme or arrangement between two or more Bidders, with or without the knowledge of Owner, a purpose of which is to establish bid prices at artificial, non-competitive levels.
 - d. Coercive practice means harming or threatening to harm, directly or indirectly, persons or their property to influence their participation in the bidding process or affect the execution of the Contract.

BIDDER hereby submits this Bid as set forth above:

Bidder:

(typed or printed name of organization)

By:

(individual's signature)

Name:

(typed or printed)

Title:

(typed or printed)

Date:

(typed or printed)

If Bidder is a corporation, a partnership, or a joint venture, attach evidence of authority to sign.

Attest:

(individual's signature)

Name:

(typed or printed)

Title:

(typed or printed)

Date:

(typed or printed)

Address for giving notices:

Bidder's Contact:

Name:

(typed or printed)

Title:

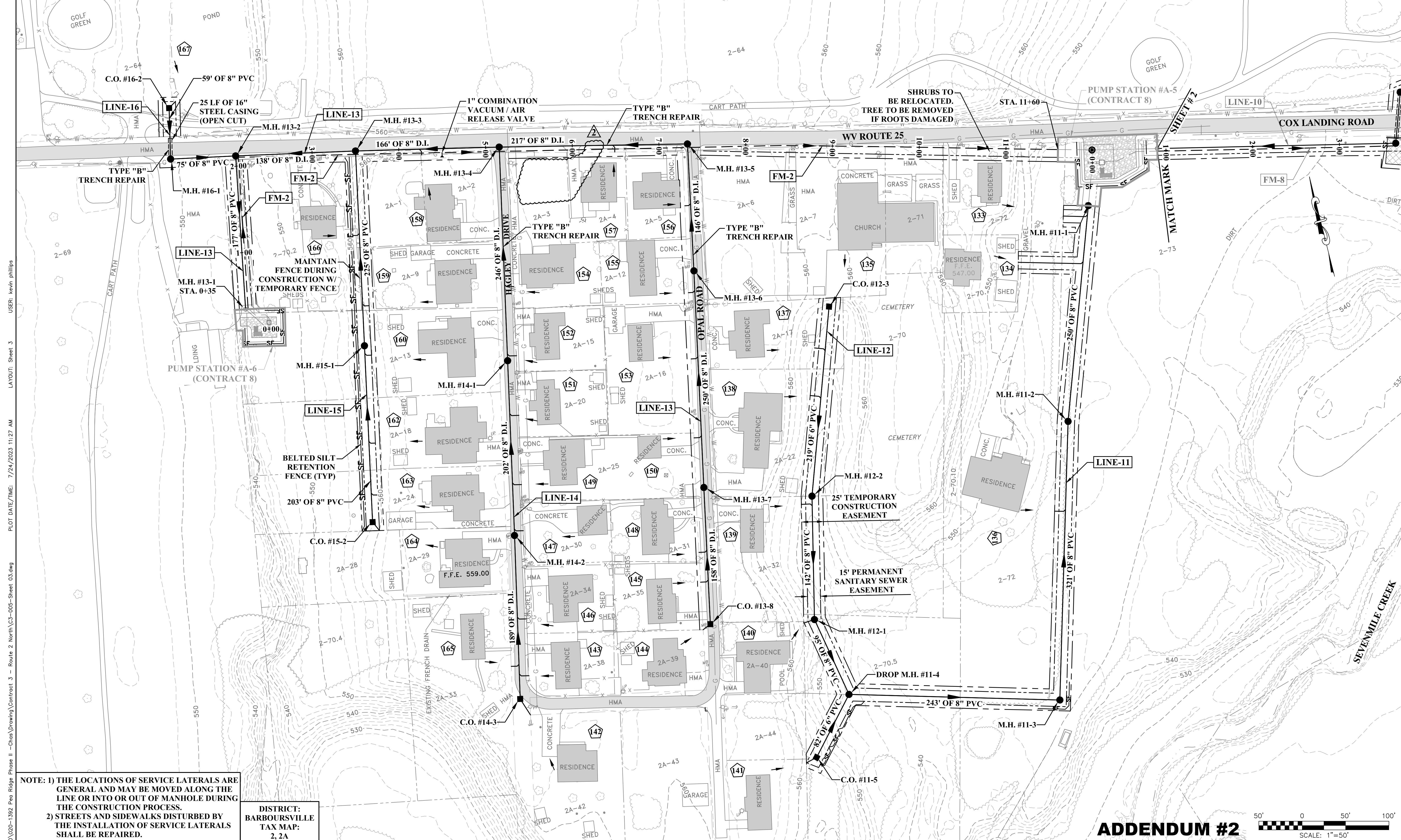
(typed or printed)

Phone:

Email:

Address:

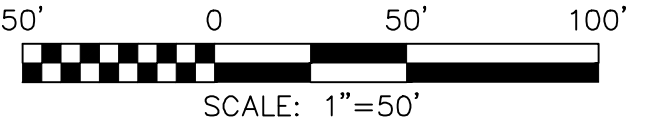
Bidder's Contractor License No.: (if applicable)



NOTE: 1) THE LOCATIONS OF SERVICE LATERALS ARE GENERAL AND MAY BE MOVED ALONG THE LINE OR INTO OR OUT OF MANHOLE DURING THE CONSTRUCTION PROCESS.
 2) STREETS AND SIDEWALKS DISTURBED BY THE INSTALLATION OF SERVICE LATERALS SHALL BE REPAIRED.

DISTRICT:
 BARBOURSVILLE
TAX MAP:
 2, 2A

ADDENDUM #2



THE INFORMATION CONTAINED HEREIN IS THE SOLE PROPERTY OF THE THRASHER GROUP INC. REPRODUCTION OF THESE DOCUMENTS IN WHOLE OR IN PART, FOR ANY REASON WITHOUT PRIOR WRITTEN PERMISSION, IS STRICTLY PROHIBITED. COPYRIGHT © 2022 THE THRASHER GROUP INC.

NO.	BY	DATE	DESCRIPTION
1	KMP	7/24/23	ADDENDUM #2 - REMOVED STA. 6+25 PRESSURE INLINE CLEANOUT

SCALE: AS SHOWN
 DRAWN: C. WILKINSON DATE: AUGUST 2022
 CHECKED: J. CARPENTER DATE: AUGUST 2022
 APPROVED: J. CARPENTER DATE: AUGUST 2022
 SURVEY DATE:
 SURVEY BY:
 FIELD BOOK No.:

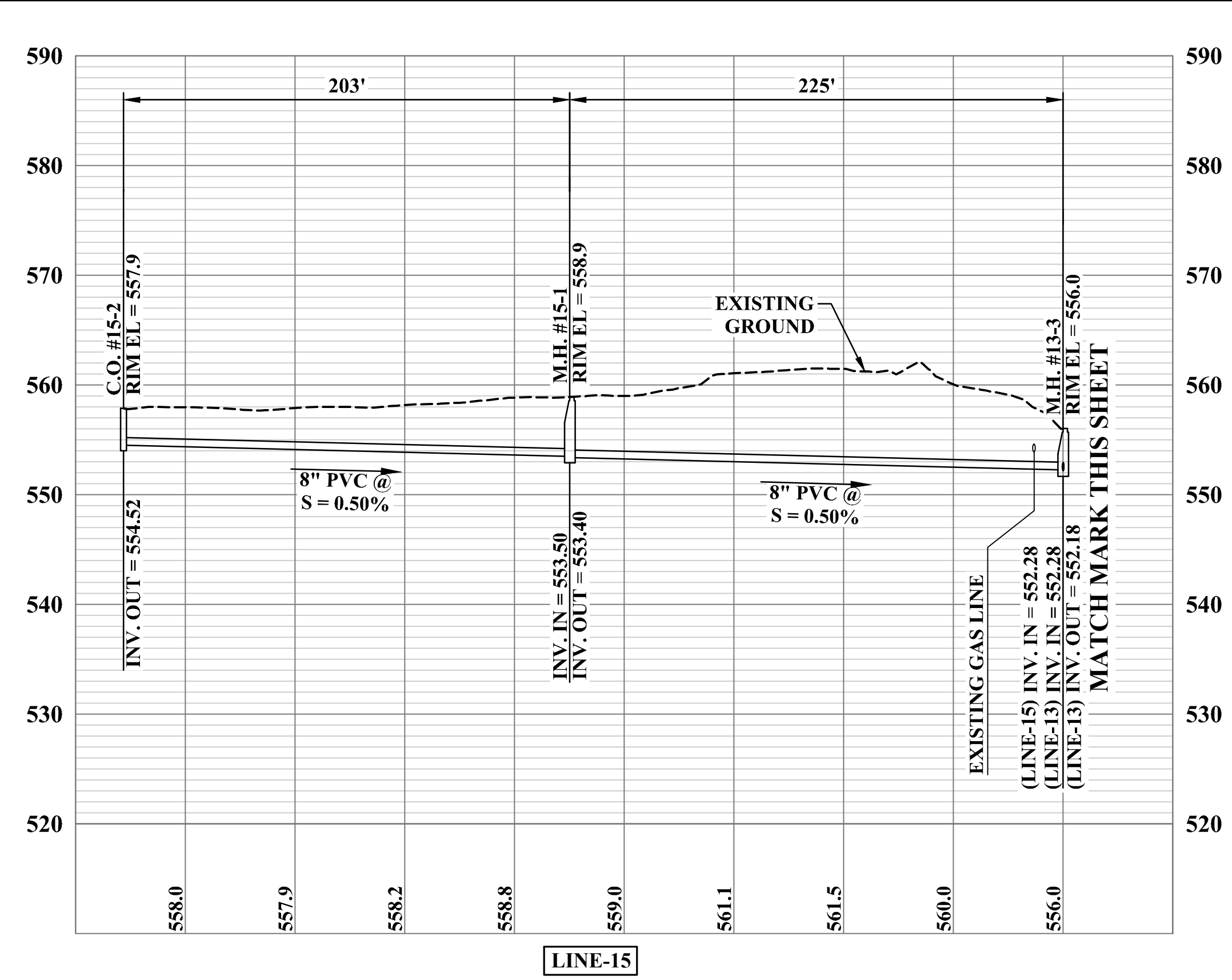
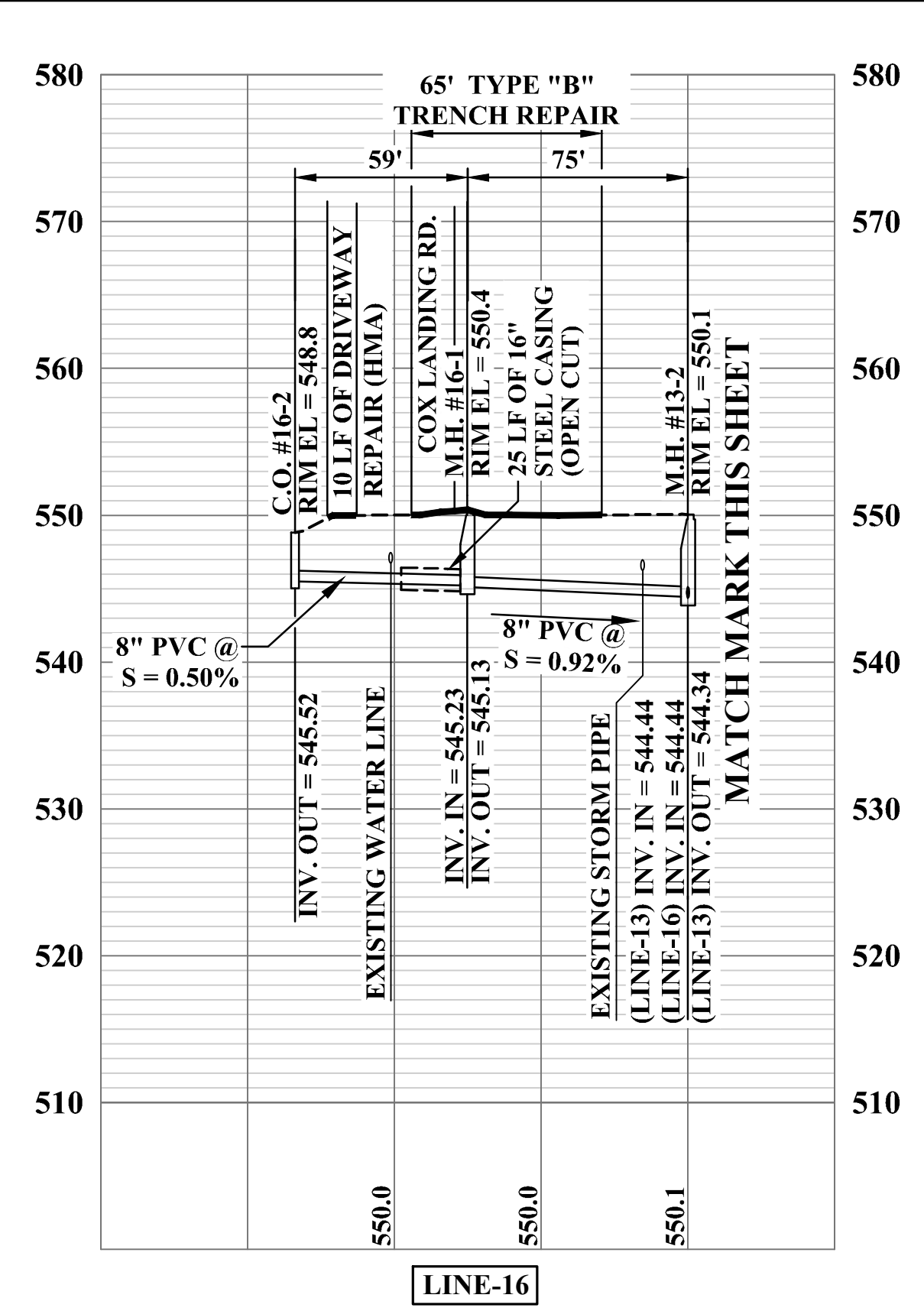
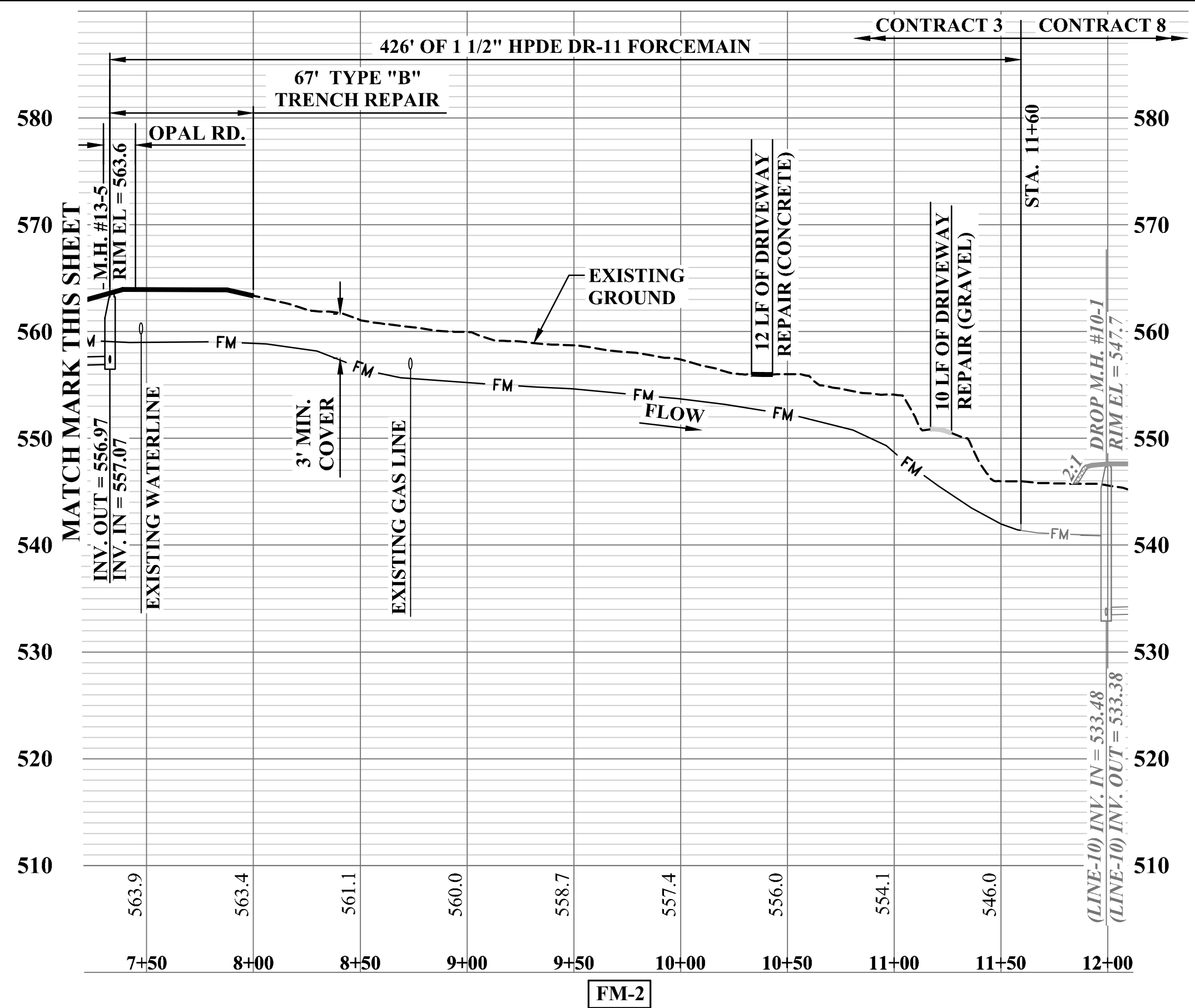
THRASHER
 1000 CORPORATE LANDING
 CHARLESTON, WV 25311
 www.thrashereng.com
 PHONE (304)-343-7601 FAX (304)-343-7604

PHASE No.	2
CONTRACT No.	3
PROJECT No.	020-1392

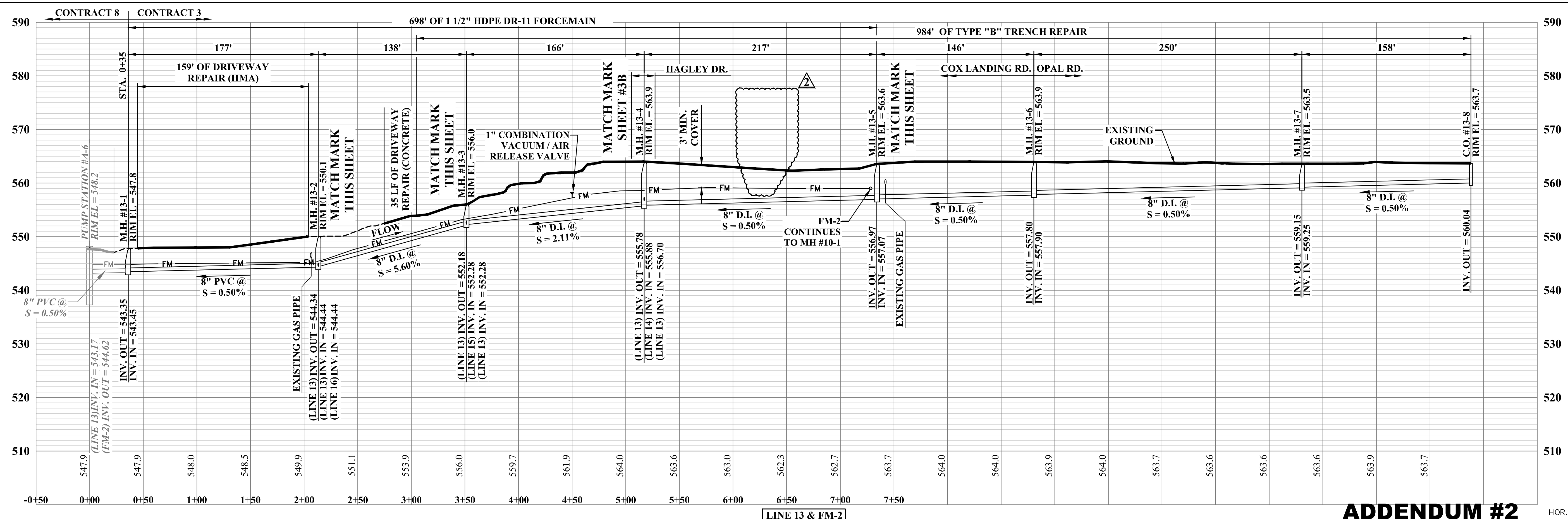
PEA RIDGE PUBLIC SERVICE DISTRICT
 CABELL COUNTY, WEST VIRGINIA
 KYLE LANE TO COX LANDING
 SANITARY SEWER EXTENSION
 PLAN SHEET

SHEET No.
3

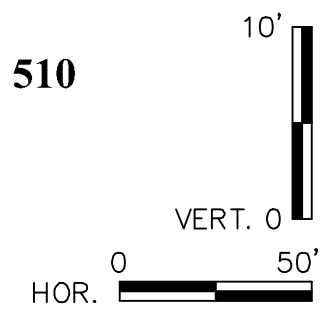
CAD FILE: R:\020\020-1392_Pea Ridge Phase II - Chas\Drawing\Contract 3 - Route 2 North\C3-005-Sheet_03.dwg
 PLOT DATE/TIME: 7/24/2023 11:27 AM
 LAYOUT: Sheet 3
 USER: kevin philips



SEE SHEET #3 FOR PLAN VIEW



ADDENDUM #2



NO.	BY	DATE	DESCRIPTION
1	KMP	7/24/23	ADDENDUM #2 - REMOVED STA. 6+25 PRESSURE INLINE CLEANOUT

SCALE: AS SHOWN	
DRAWN: C. WILKINSON	DATE: AUGUST 2022
CHECKED: J. CARPENTER	DATE: AUGUST 2022
APPROVED: J. CARPENTER	DATE: AUGUST 2022
SURVEY DATE:	
FIELD BOOK No.:	

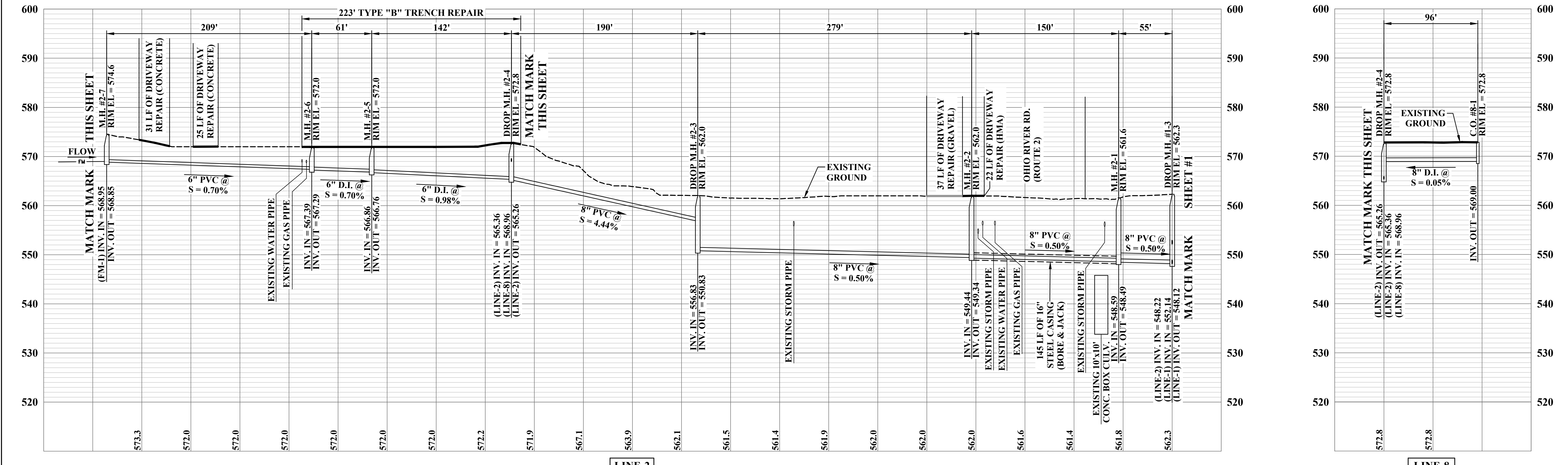
THRASHER
1000 CORPORATE LANDING
CHARLESTON, WV 25311
www.thrashereng.com
PHONE (304)-343-7601
FAX (304)-343-7604

PHASE No.	2
CONTRACT No.	3
PROJECT No.	020-1392

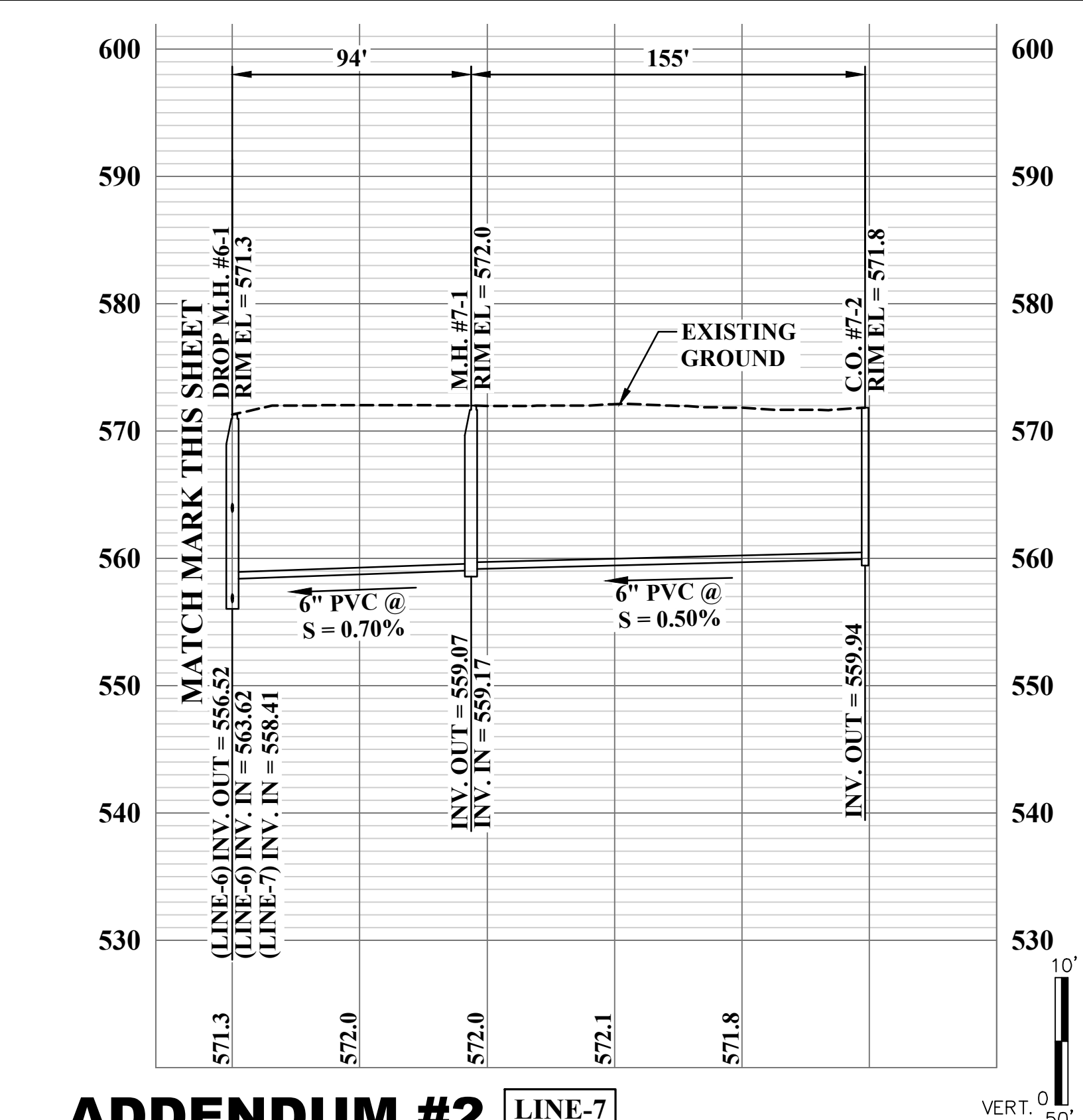
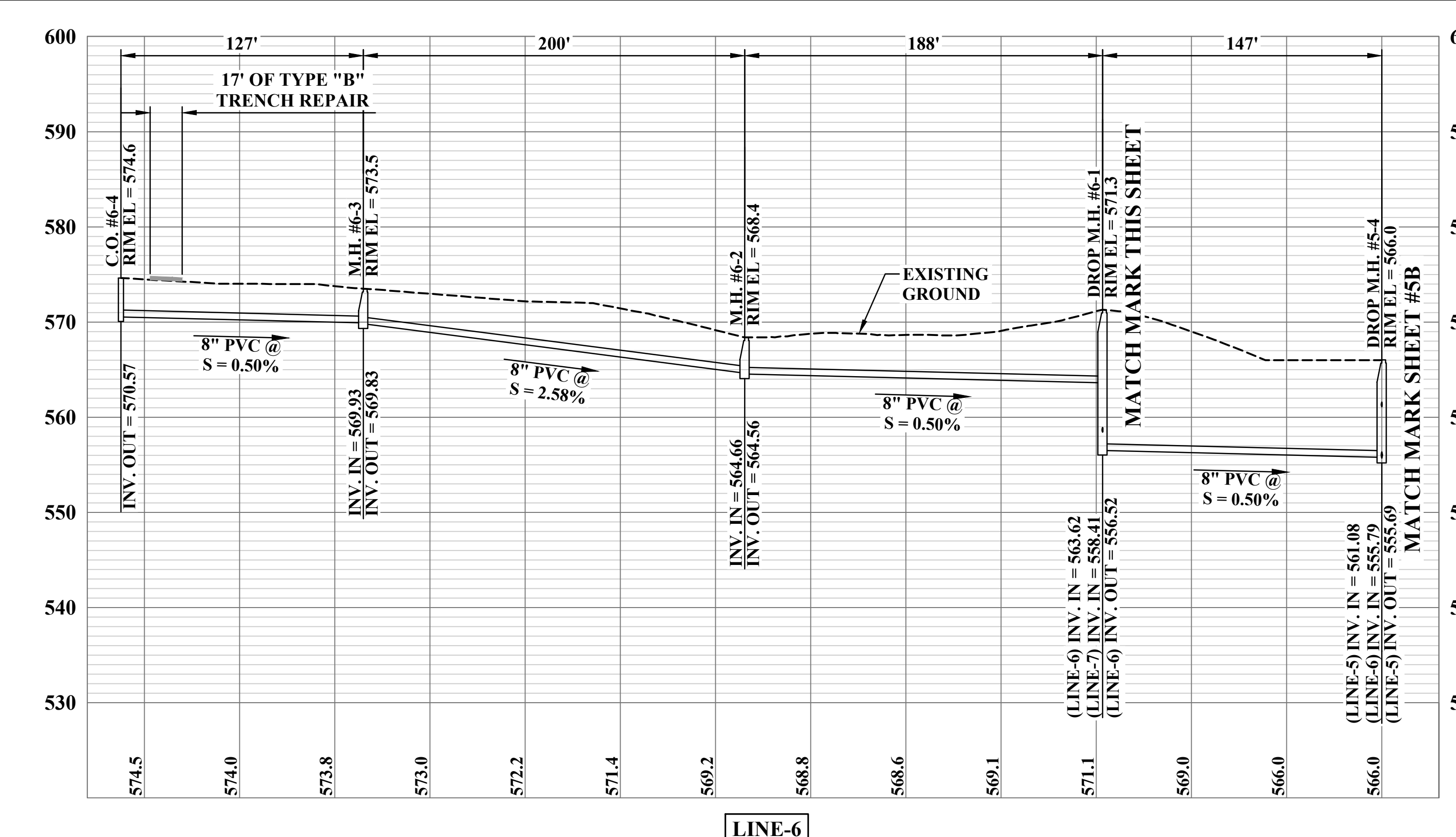
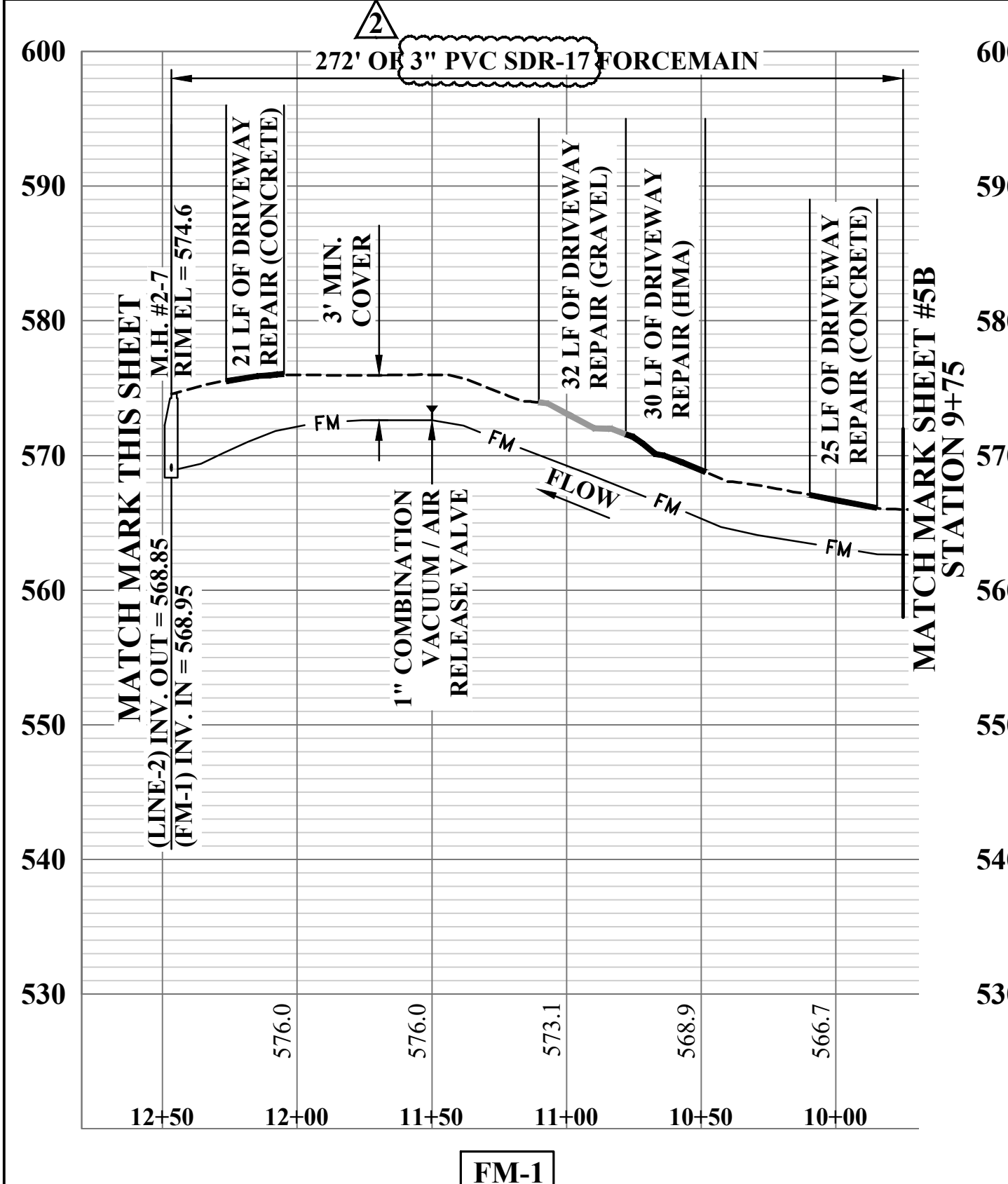
PEA RIDGE PUBLIC SERVICE DISTRICT
CABELL COUNTY, WEST VIRGINIA
KYLE LANE TO COX LANDING
SANITARY SEWER EXTENSION
PROFILES

SHEET No.
3A

CAD FILE: R:\020\020-1392_Pea Ridge Phase II - Chas\Drawing\Contract 3 - Route 2 North\03-006-Sheet_04.dwg PLOT DATE/TIME: 7/24/2023 9:14 AM USER: kevin.phillips LAYOUT: Sheet 4A



SEE SHEET #4 FOR PLAN VIEW



NO.	BY	DATE	DESCRIPTION
1	KMP	7/21/23	ADDENDUM #2 - UPDATED FORCEMAIN SIZE & MATERIAL

NO.	BY	DATE	DESCRIPTION

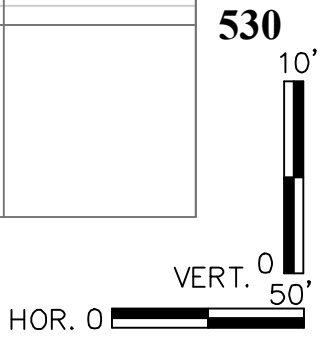
SCALE: AS SHOWN
 DRAWN: C. WILKINSON DATE: AUGUST 2022
 CHECKED: J. CARPENTER DATE: AUGUST 2022
 APPROVED: J. CARPENTER DATE: AUGUST 2022
 SURVEY DATE:
 SURVEY BY:
 FIELD BOOK No.:

1000 CORPORATE LANDING
 CHARLESTON, WV 25311
 www.thrashereng.com
 PHONE (304)-343-7601 FAX (304)-343-7604

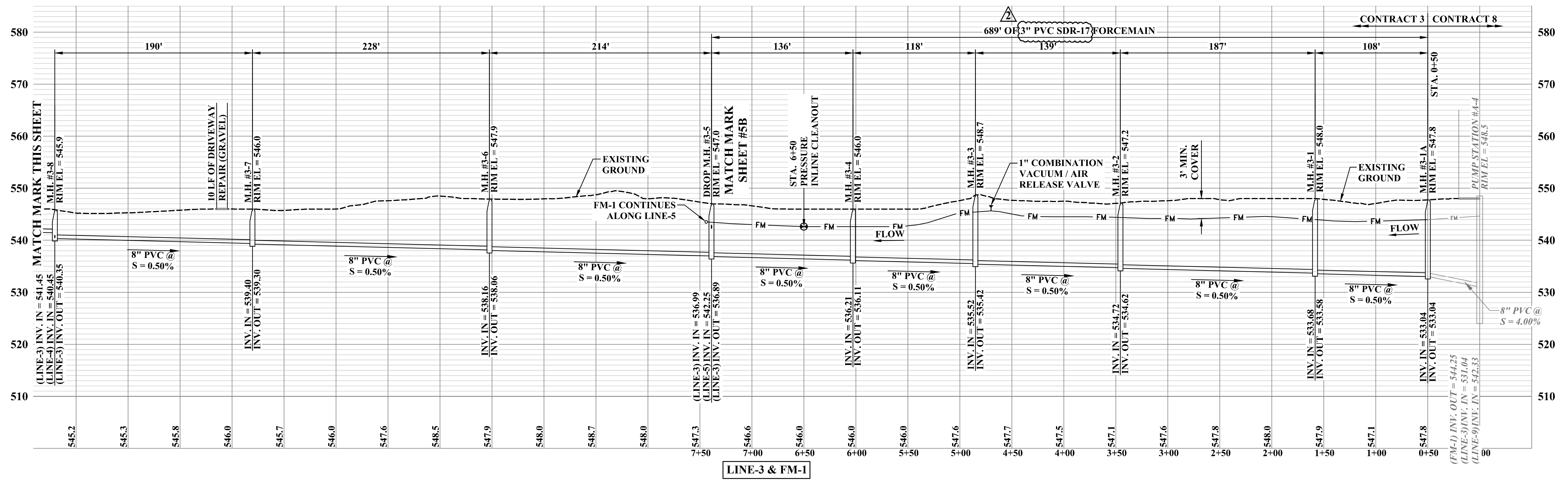
PHASE No.	2
CONTRACT No.	3
PROJECT No.	020-1392

ADDENDUM #2
 PEA RIDGE PUBLIC SERVICE DISTRICT
 CABELL COUNTY, WEST VIRGINIA
 KYLE LANE TO COX LANDING
 SANITARY SEWER EXTENSION
 PROFILES

SHEET No.
4A

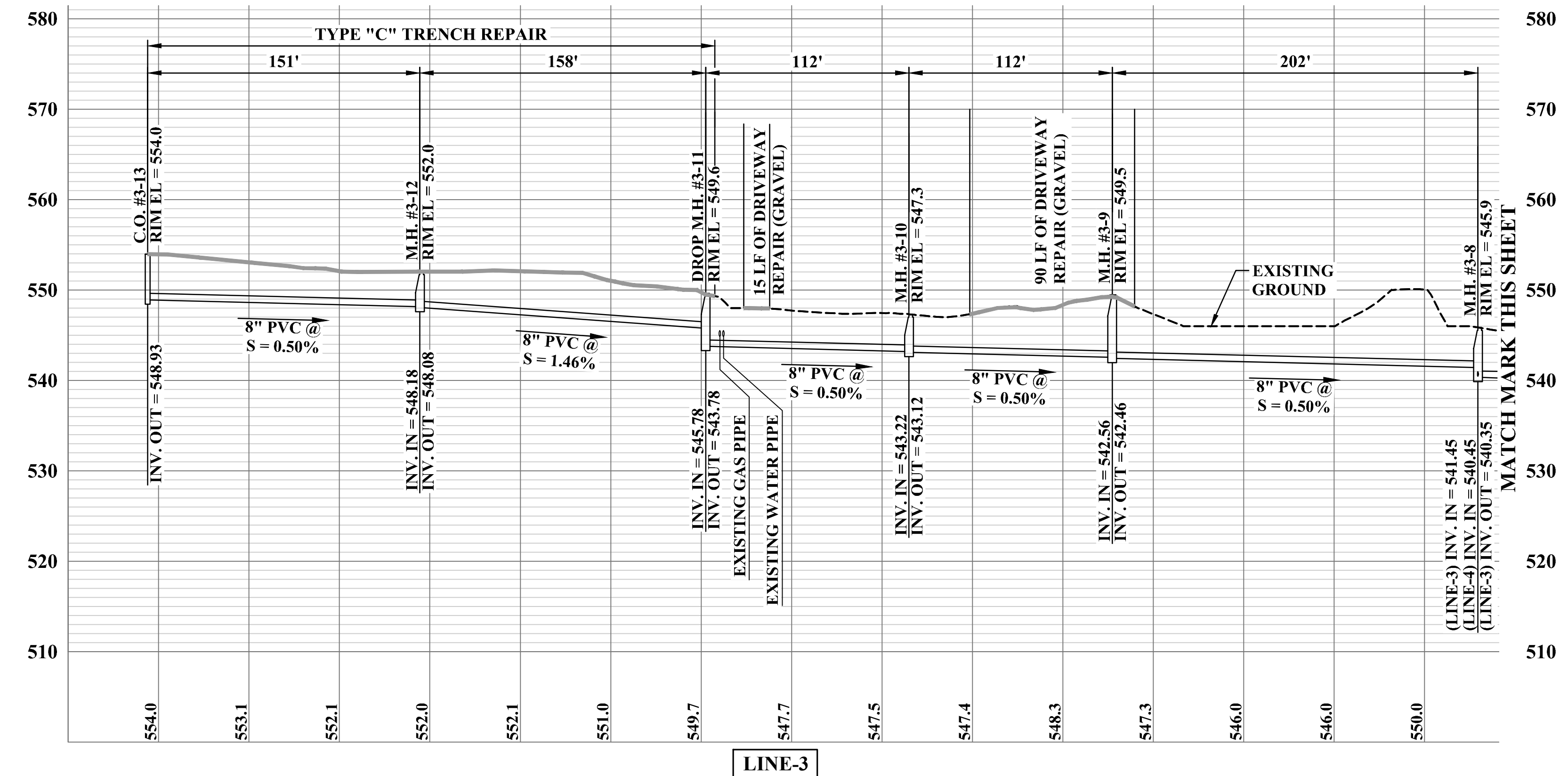


CAD FILE: R:\020\020-1392_Pea Ridge Phase II - Chas\Drawing\Contract 3 - Route 2 North\03-007-Sheet_05.dwg
 PLOT DATE/TIME: 7/24/2023 9:19 AM
 LAYOUT: Sheet 5A
 USER: kevin.phillips

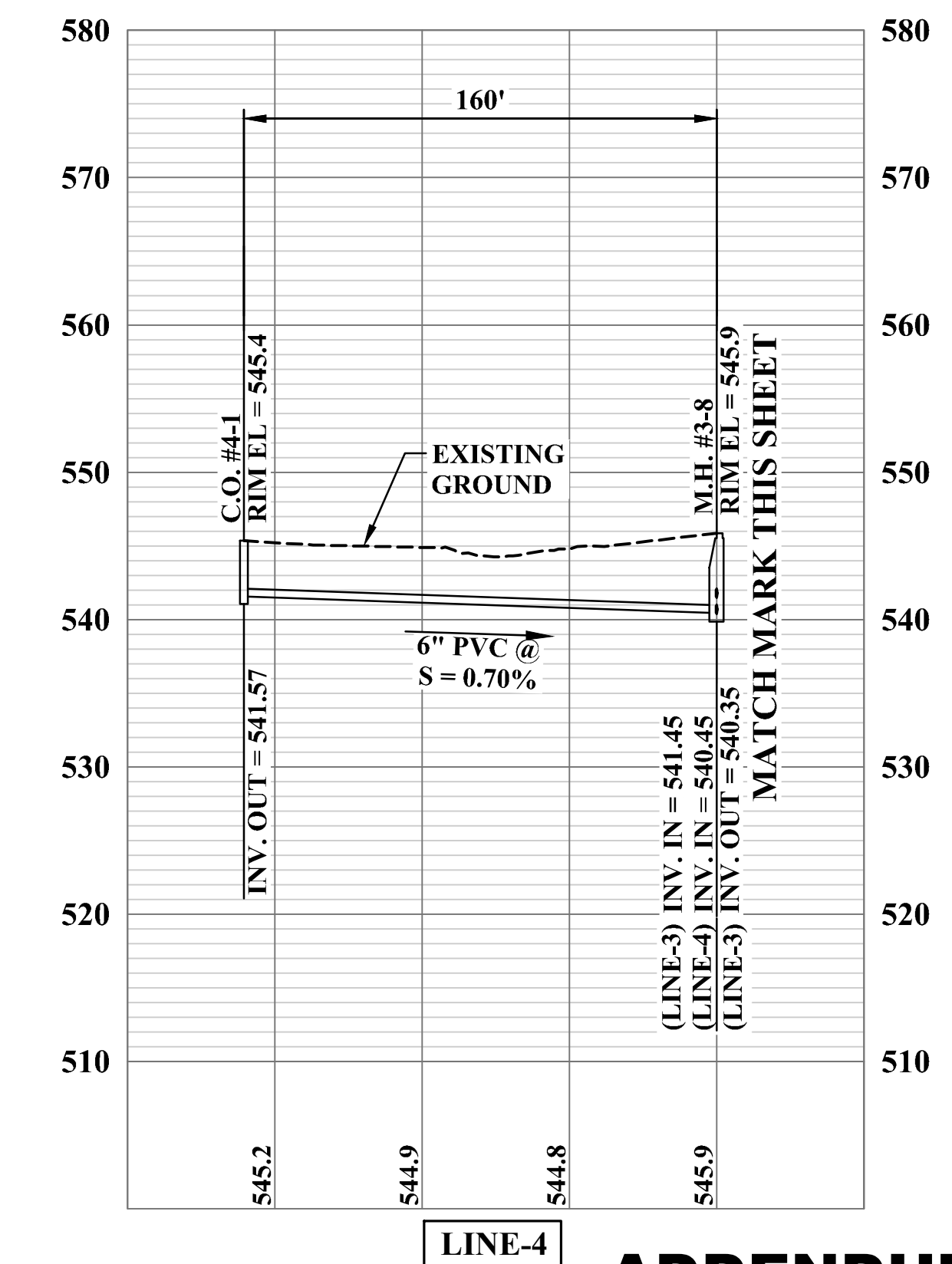


LINE-3 & FM-1

SEE SHEET #5 FOR PLAN VIEW

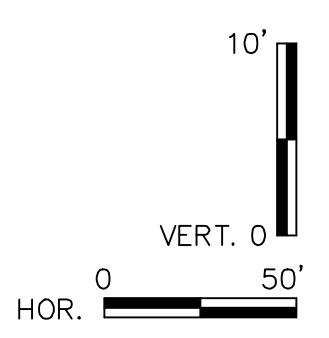


LINE-3



LINE-4

ADDENDUM #2



NO.	BY	DATE	DESCRIPTION
1	KMP	7/21/23	ADDENDUM #2 - UPDATED FORCEMAIN SIZE & MATERIAL

SCALE: AS SHOWN
 DRAWN: C. WILKINSON DATE: AUGUST 2022
 CHECKED: J. CARPENTER DATE: AUGUST 2022
 APPROVED: J. CARPENTER DATE: AUGUST 2022
 SURVEY DATE:
 SURVEY BY:
 FIELD BOOK No.:

THRASHER
 1000 CORPORATE LANDING
 CHARLESTON, WV 25311
 www.thrashereng.com
 PHONE (304)-343-7601 FAX (304)-343-7604

PHASE No.	2
CONTRACT No.	3
PROJECT No.	020-1392

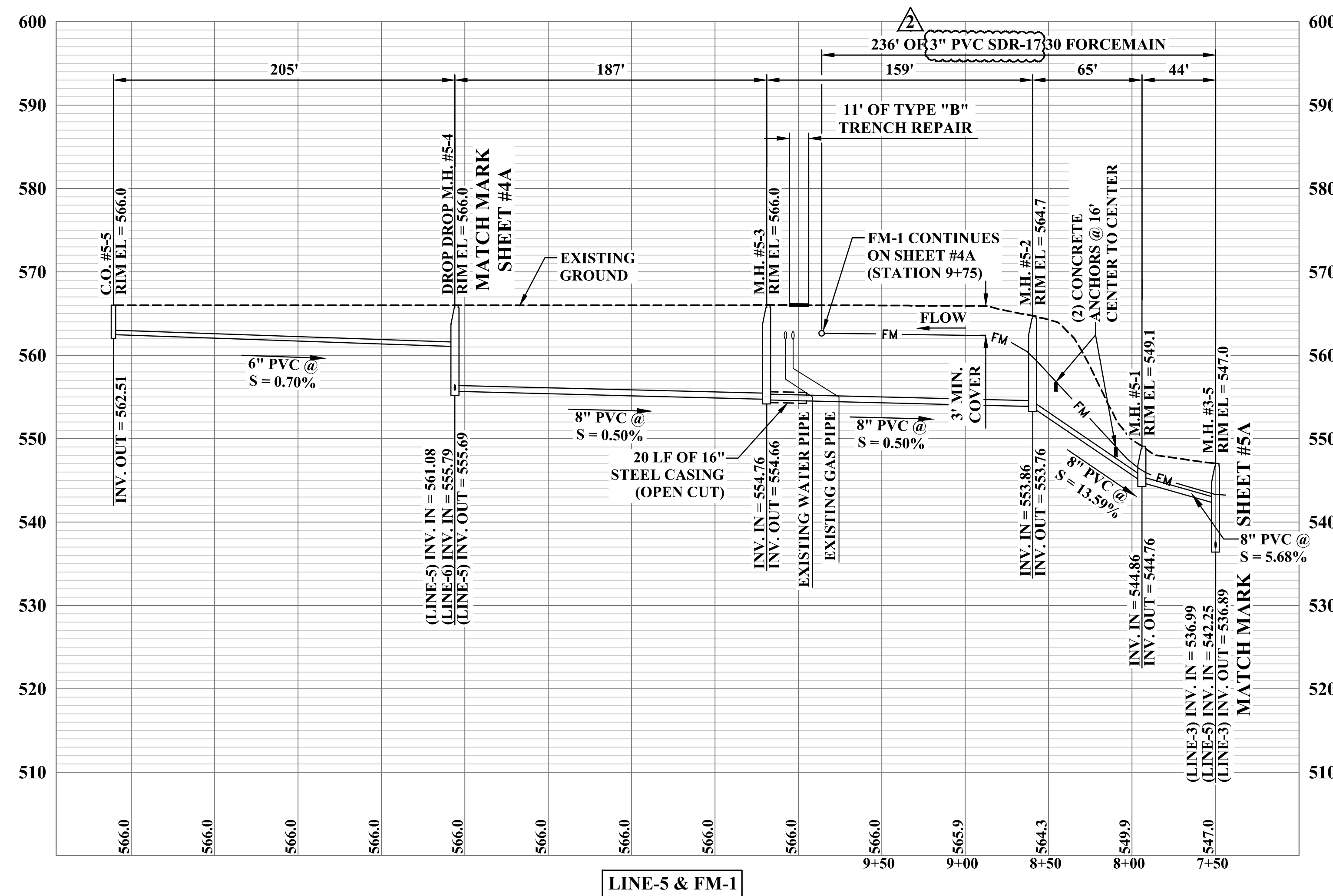
PEA RIDGE PUBLIC SERVICE DISTRICT
 CABELL COUNTY, WEST VIRGINIA
 KYLE LANE TO COX LANDING
 SANITARY SEWER EXTENSION
 PROFILES

SHEET No.
5A

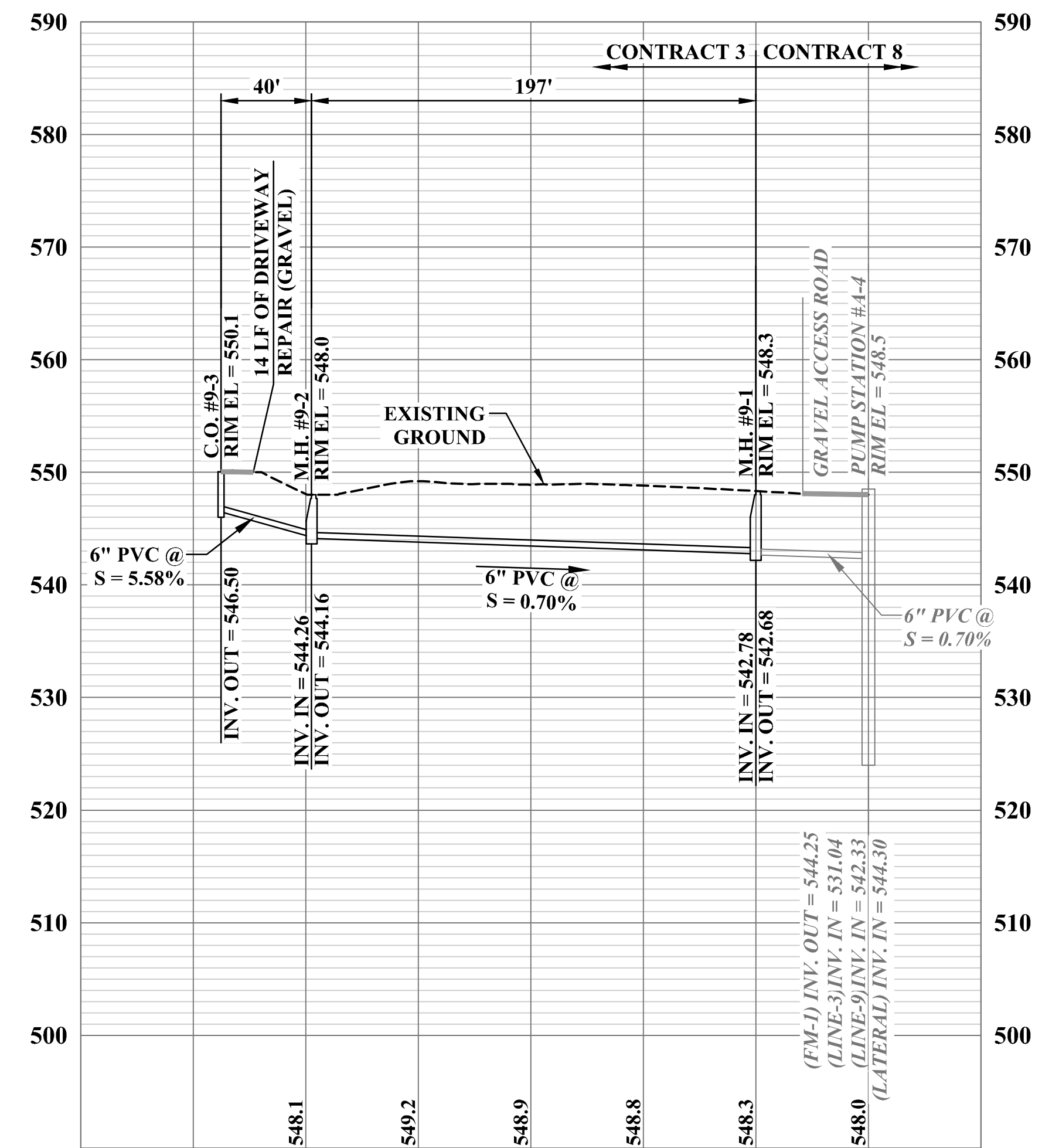
THE INFORMATION CONTAINED HEREIN IS THE SOLE PROPERTY OF THE THRASHER GROUP INC. REPRODUCTION OF THESE DOCUMENTS IN WHOLE OR IN PART, FOR ANY REASON WITHOUT PRIOR WRITTEN PERMISSION, IS STRICTLY PROHIBITED. COPYRIGHT © 2022 THE THRASHER GROUP INC.

CAD FILE: R:\020\020-1392_Pea Ridge Phase II - Chas\Drawing\Contract 3 - Route 2 North\03-007-Sheet 05.dwg PLOT DATE/TIME: 7/24/2023 9:24 AM LAYOUT: Sheet 5B USER: kevin phillips

SEE SHEET #5 FOR PLAN VIEW

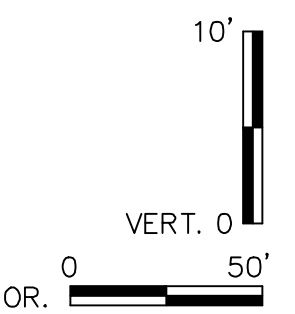


LINE-5 & FM-1



LINE-9

ADDENDUM #2



NO.	BY	DATE	DESCRIPTION
1	KMP	7/21/23	ADDENDUM #2 - UPDATED FORCEMAIN SIZE & MATERIAL

SCALE: AS SHOWN
 DRAWN: C. WILKINSON DATE: AUGUST 2022
 CHECKED: J. CARPENTER DATE: AUGUST 2022
 APPROVED: J. CARPENTER DATE: AUGUST 2022
 SURVEY DATE:
 SURVEY BY:
 FIELD BOOK No.:

THRASHER
 1000 CORPORATE LANDING
 CHARLESTON, WV 25311
 www.thrashereng.com
 PHONE (304)-343-7601 FAX (304)-343-7604

PHASE No.	2
CONTRACT No.	3
PROJECT No.	020-1392

PEA RIDGE PUBLIC SERVICE DISTRICT
 CABELL COUNTY, WEST VIRGINIA
 KYLE LANE TO COX LANDING
 SANITARY SEWER EXTENSION
 PROFILES

SHEET No.
5B