

**HARDY COUNTY RDA, HARDY COUNTY COMMISSION
HARDY COUNTY, WEST VIRGINIA**

HARDY COUNTY HEALTH DEPARTMENT

ADDENDUM #2

July 3, 2023

THRASHER PROJECT #060-10119

TO WHOM IT MAY CONCERN:

A Pre-Bid Conference was held on Friday, June 23, 2023, on the above-referenced project. The following are clarifications and responses to questions posed by contractors for the above reference project.

A. GENERAL

1. Revised bid form attached to this addendum to remove Deductive Alternate: Pavement Section – Entrance

B. SPECIFICATIONS

1. ADD Specification Section 096516 Resilient Sheet Flooring as attached to this addendum.

C. DRAWINGS

1. OMIT notes on C2.01 & C2.02 that refer to Deductive Alternate #2
2. REPLACE S1.01 with S1.01R as attached to this addendum.
3. REPLACE A1.03 with A1.03R as attached to this addendum. Changed bulkhead from bulkhead 1 to bulkhead 2 and adjusted the lights above counter.
4. OMIT 2/A5.01 Bulkhead 1 Detail @ Nurse's Station.
5. REVISE notes on 1/A5.02 and 4/A5.02 to PLAM countertops.
6. REPLACE A6.01 with A6.01R as attached to this addendum. Omit Frame Type 6 frame and associated doors change to added door types 6 or 7 as indicated.
7. REPLACE E5.00 with E5.00R as attached to this addendum.
8. REPLACE E6.00 with E6.00R as attached to this addendum.

D. QUESTIONS AND RESPONSES

Q1 Per note # 3 – Change roof system to shingles. Would this change include sheet metal – fascia, gutter, downspouts, soffit to traditional materials in lieu of shop fabricated.

A1 Yes, the deductive alternate would change to traditional materials which meet or exceed the following minimum standards: .032 5" K style gutter, .032 fascia & drip edge, .032 (3"x4") downspouts, and Alcoa or equal .032 v. groove vented soffit & trim.

Q2 I do not see a spec for the HRS flooring. Can you please send that over?

A2 See SPECIFICATIONS #1

Q3 During the pre-bid meeting, it was stated that the bid bond for this project would be 10%. After reviewing the specifications, it says 5%. Can you please confirm the correct bonding percentage?

A3 The Bid Bond should be 5% see Addendum #1 CLARIFICATIONS #2.

Q4 The specifications call for the casework and the wood doors to meet AWI certification. Would it be possible to have this changed to where the wood doors and casework are to meet the AWI standard, rather than the certification?

A4 AWI Standard is acceptable in lieu of the AWI Certification for the casework and wood doors.

Q5 The specifications state that rock removal is unclassified, but a section for a geotechnical report has been struck-through. Is there a geotechnical report for this site/project?

A5 A geotechnical investigation was not completed for this site/project. This project is primarily a fill project and does not include much excavation.

E. CLARIFICATIONS

None as part of this addendum.

If you have any questions or comments, please feel free to contact me at your earliest convenience. As a reminder, bids will be received until 1:00 p.m. on Tuesday, July 18, 2023, at Hardy County Rural Development Authority, located at 223 North Main Street, Suite 102 Moorefield, WV 26836. Good luck to everyone and thank you for your interest in the project.

Sincerely,

THE THRASHER GROUP, INC.



Marsha Benson
Project Manager



BID FORM FOR CONSTRUCTION CONTRACT

The terms used in this Bid with initial capital letters have the meanings stated in the Instructions to Bidders, the General Conditions, and the Supplementary Conditions.

ARTICLE 1—OWNER AND BIDDER

1.01 This Bid is submitted to:

*Hardy County Rural Development Authority, Hardy County Commission
204 Washington Street
Moorefield, WV 26836*

1.02 The undersigned Bidder proposes and agrees, if this Bid is accepted, to enter into an Agreement with Owner in the form included in the Bidding Documents to perform all Work as specified or indicated in the Bidding Documents for the prices and within the times indicated in this Bid and in accordance with the other terms and conditions of the Bidding Documents.

ARTICLE 2—ATTACHMENTS TO THIS BID

2.01 The following documents are submitted with and made a condition of this Bid:

A. Bid Opening Requirements

Note: Bid Opening Requirements (BOR-12) includes the American Iron and Steel Certification which needs to be filled out and signed by the Contractor. This certification also references two (2) Exhibits located in the Supplemental General Conditions (C-800) which were issued as part of RUS Bulletin 1780-35.

ARTICLE 3—BASIS OF BID—LUMP SUM BID AND UNIT PRICES

GENERAL

The Bidder shall take notice of and shall be responsible for any local or state taxes levied and applicable, and the cost for the same shall be included as part of the submitted Bid.

The total Bid cost stated includes a complete operating installation including furnishing and installation of any and all changes or additions in plans, piping, mechanical work, additional electrical work, accessories, controls, etc. necessary to accommodate alternative equipment systems or materials used in construction.

BID PROPOSAL

The Bidder agrees to perform all required Work described in the detailed Specifications and as shown on the Plans for the complete construction and placing in satisfactory operation the Hardy County Health Department. The Project "Sequence of Construction" has been detailed in the Drawings and Specification Division 1, Project Summary, Section 011000. The Bidder agrees to perform all the Work proposed for the total of the following Bid prices.

3.01 *Lump Sum Bids*

A. Bidder will complete the Work in accordance with the Contract Documents for the lump sum (stipulated) price(s), together with any Unit Prices indicated in Paragraph 3.02 and shown in the bid schedule.

B. Lump Sum Bids may be one of the following:

~~1. Lump Sum Price (Single Lump Sum)~~

2. Lump Sum Price (Base Bid and Alternates)

~~3. Lump Sum Price (Sectional Lump Sum Bids)~~

C. All specified cash allowance(s) are included in the price(s) set forth in the bid schedule, and have been computed in accordance with Paragraph 13.02 of the General Conditions.

D. All specified contingency allowances are included in the price(s) set forth in the bid schedule, and have been computed in accordance with Paragraph 13.02 of the General Conditions.

3.02 *Unit Price Bids*

A. Bidder will perform the following Work at the indicated unit prices as shown in the Bid Schedule.

B. Bidder acknowledges that:

1. each Bid Unit Price includes an amount considered by Bidder to be adequate to cover Contractor's overhead and profit for each separately identified item, and
2. estimated quantities are not guaranteed, and are solely for the purpose of comparison of Bids, and final payment for all Unit Price Work will be based on actual quantities, determined as provided in the Contract Documents.

3.03 *Total Bid Price (Lump Sum and Unit Prices)*

**PROPOSED
HARDY COUNTY HEALTH DEPARTMENT
FOR THE
HARDY COUNTY RURAL DEVELOPMENT AUTHORITY, HARDY COUNTY
COMMISSION
HARDY COUNTY, WEST VIRGINIA
THRASHER PROJECT #060-10119**

BID SCHEDULE

NOTE: Bid Unit Price amounts are to be shown in both words and figures. In case of discrepancy, the Bid Unit Price shown in words will govern. Bids shall include sales tax and all other applicable taxes and fees.

Item #	Qty	UNIT	DESCRIPTION	TOTAL PRICE
1	1	LS	<i>Provide all labor, materials, equipment, fees, bonds, insurance and taxes to perform the work as detailed in the plans and specifications and addenda.</i>	

TOTAL BASE BID: _____
(Written in Words)

Item #	Qty	UNIT	DESCRIPTION	TOTAL PRICE
1	1	LS	Pavement Section - Parking <i>Pavement Section at Staff Parking to be removed including the fabric, stone, and asphalt. Area shall be graded to subgrade and seeded. Location indicated on Drawing. Provide all labor, materials, equipment, fees, bonds, insurance and taxes to perform the work as detailed in the plans and specifications and addenda.</i>	

TOTAL DEDUCTIVE BID ITEM #1:

(Written in Words)

Item #	Qty	UNIT	DESCRIPTION	TOTAL PRICE
2	1	LS	Roof System <i>Change standing seam metal roof system to an Asphalt Shingle Roof. Allow for Tyvek weather barrier or 30lb. felt underlayment as required for a manufacturer's 30-year warranty and a contractor's 2 year full coverage warranty. Work shall include heavy duty aluminum gutters, downspouts, drip edge, vented and screened ridge cap, and all similar accessories required for a complete installation. Provide all labor, materials, equipment, fees, bonds, insurance and taxes to perform the work as detailed in the plans and specifications and addenda.</i>	

TOTAL DEDUCTIVE BID ITEM #3:

(Written in Words)

Item #	Qty	UNIT	DESCRIPTION	TOTAL PRICE
3	1	LS	Manual Operable Shades <i>Omit all manual operable shades from Scope of Work. Provide all labor, materials, equipment, fees, bonds, insurance and taxes to perform the work as detailed in the plans and specifications and addenda.</i>	

TOTAL DEDUCTIVE BID ITEM #4:

(Written in Words)

3.04 *Method of Award*

Method of Award = Lowest Qualified Bidder (Deductive Alternate)

If at the time this Contract is to be awarded, the lowest total bid submitted by a qualified, responsive, responsible bidder, as listed in contract does not exceed the amount of funds estimated by the Owner, as available to finance the contract, the construction contract will be awarded. If such bids exceeds such amount, the Owner may reject all bids. The Owner may award the contract on the total bid submitted by a qualified, responsive, responsible bidder, less the amount(s) of the deductive alternate(s) subtracted to produce the lowest bid within the funds available for financing.

- A. Unit prices have been computed in accordance with paragraph 13.03.A of the General Conditions.
- B. Bidder acknowledges that estimated quantities are not guaranteed, and are solely for the purpose of comparison of Bids, and final payment for all Unit Price Bid items will be based on actual quantities, determined as provided in the Contract Documents.

~~ARTICLE 4 BASIS OF BID COST PLUS FEE~~

~~4.01 The Contract Price will be the Cost of the Work, determined as provided in Paragraph 13.01 of the General Conditions, together with the following fee, and subject to the Guaranteed Maximum Price.~~

~~4.02 Contractor's Fee~~

- ~~A. Contractor's fee will be [number] percent of the Cost of the Work. No fee will be payable on the basis of costs itemized as excluded in Paragraph 13.01.C of the General Conditions.

 - ~~1. The maximum amount payable by Owner as a percentage fee (Guaranteed Maximum Fee) will not exceed \$[insert cap amount], subject to increases or decreases for changes in the Work.~~~~
- ~~B. Contractor's fee will be determined by applying the following percentages to the various portions of the Cost of the Work as defined in Article 13 of the General Conditions. No fee will be payable on the basis of costs itemized as excluded in Paragraph 13.01.C of the General Conditions:~~

Costs	Percent
Payroll costs (See Paragraph 13.01.B.1, General Conditions)	
Materials and Installed Equipment cost (GC 13.01.B.2)	
Amounts to be paid to Subcontractors (GC 13.01.B.3)	
Amount to be paid to special consultants (GC 13.01.B.4)	
Other costs (GC 13.01.B.5)	

- ~~1. The maximum amount payable by Owner as a percentage fee (Guaranteed Maximum Fee) will not exceed \$[insert cap amount], subject to increases or decreases for changes in the Work.~~
- ~~C. Contractor's fee will be the fixed sum of \$[number].~~

~~4.03 Guaranteed Maximum Price~~

- ~~A. The Guaranteed Maximum Price to Owner of the Cost of the Work including Contractor's Fee will not exceed \$[Bidder fill in GMP].~~

~~Deleted~~

ARTICLE 5 — PRICE PLUS TIME BID

5.01 ~~Price Plus Time Contract Award (Stipulated Price Contract)~~

~~A. The Bidder to which an award of the Contract will be made will be determined in part on the basis of the Total Bid Price and the total number of calendar days to substantially complete the Work, in accordance with the following:~~

	Description		Amount
A	1. Total Bid Price		#{number}
	2. Total number of calendar days to substantially complete the Work	{number} days	
	3. Liquidated Damages Rate (from Agreement)	#{number}/day	
B	4. Adjustment Amount (2 x 3)		#{number}
A+B	5. Amount for Comparison of Bids		#{number}

~~B. The purpose of the process in the table above is only to calculate the lowest price plus time (A+B) bid amount for bid comparison purposes. The price for completion of the Work (the Contract Price) is the Total Bid Price.~~

~~C. Bonds required under Paragraph 6.01 of the General Conditions will be based on the Contract Price.~~

5.02 ~~Price Plus Time Contract Award (Cost Plus Fee with Guaranteed Maximum Price Contract)~~

~~A. The Bidder to which an award of Contract will be made will be determined in part on the basis of the Guaranteed Maximum Price and the total number of calendar days to substantially complete the Work, in accordance with the following:~~

	Description		Amount
A	1. Guaranteed Maximum Price		#{number}
	2. Total number of calendar days to substantially complete the Work	{number} days	
	3. Liquidated Damages Rate (from Agreement)	#{number}/day	
B	4. Adjustment Amount (2 x 3)		#{number}
A+B	5. Amount for Comparison of Bids		#{number}

~~B. The purpose of the process in the table above is only to calculate the lowest price plus time (A+B) bid amount for bid comparison purposes. The price for completion of the Work (the Contract Price) is based on the cost of the Work, plus a fee, subject to a guaranteed maximum price, as set forth in the Agreement.~~

~~C. Bonds required under Paragraph 6.01 of the General Conditions will be based on the Contract Price.~~

Deleted

ARTICLE 6 — TIME OF COMPLETION

6.01 Bidder agrees that the Work will be substantially complete and will be completed and ready for final payment in accordance with Paragraph 15.06 of the General Conditions on or before the dates or within the number of calendar days indicated in the Agreement.

6.02 ~~Bidder agrees that the Work will be substantially complete on or before [Bidder inserts date], and will be completed and ready for final payment in accordance with Paragraph 15.06 of the General Conditions on or before [Bidder inserts date].~~

Deleted

6.03 ~~Bidder agrees that the Work will be substantially complete within [Bidder inserts number] calendar days after the date when the Contract Times commence to run as provided in Paragraph 4.01 of the~~

~~General Conditions, and will be completed and ready for final payment in accordance with Paragraph 15.06 of the General Conditions within [Bidder inserts number] calendar days after the date when the Contract Times commence to run.~~

Deleted

6.04 Bidder accepts the provisions of the Agreement as to liquidated damages.

ARTICLE 7—BIDDER’S ACKNOWLEDGEMENTS: ACCEPTANCE PERIOD, INSTRUCTIONS, AND RECEIPT OF ADDENDA

7.01 *Bid Acceptance Period*

A. This Bid will remain subject to acceptance for 90 days after the Bid opening, or for such longer period of time that Bidder may agree to in writing upon request of Owner.

7.02 *Instructions to Bidders*

A. Bidder accepts all of the terms and conditions of the Instructions to Bidders, including without limitation those dealing with the disposition of Bid security.

7.03 *Receipt of Addenda*

A. Bidder hereby acknowledges receipt of the following Addenda:

Addendum Number	Addendum Date

ARTICLE 8—BIDDER’S REPRESENTATIONS AND CERTIFICATIONS

8.01 *Bidder’s Representations*

A. In submitting this Bid, Bidder represents the following:

1. Bidder has examined and carefully studied the Bidding Documents, including Addenda.
2. Bidder has visited the Site, conducted a thorough visual examination of the Site and adjacent areas, and become familiar with the general, local, and Site conditions that may affect cost, progress, and performance of the Work.
3. Bidder is familiar with all Laws and Regulations that may affect cost, progress, and performance of the Work.
4. Bidder has carefully studied the reports of explorations and tests of subsurface conditions at or adjacent to the Site and the drawings of physical conditions relating to existing surface or subsurface structures at the Site that have been identified in the Supplementary Conditions, with respect to the Technical Data in such reports and drawings.
5. Bidder has carefully studied the reports and drawings relating to Hazardous Environmental Conditions, if any, at or adjacent to the Site that have been identified in the Supplementary Conditions, with respect to Technical Data in such reports and drawings.
6. Bidder has considered the information known to Bidder itself; information commonly known to contractors doing business in the locality of the Site; information and observations obtained from visits to the Site; the Bidding Documents; and the Technical Data identified in the Supplementary Conditions or by definition, with respect to the effect of such information, observations, and Technical Data on (a) the cost, progress, and performance of the Work; (b) the means, methods, techniques, sequences, and procedures of construction to be employed by Bidder, if selected as Contractor; and (c) Bidder’s (Contractor’s) safety precautions and programs.

7. Based on the information and observations referred to in the preceding paragraph, Bidder agrees that no further examinations, investigations, explorations, tests, studies, or data are necessary for the performance of the Work at the Contract Price, within the Contract Times, and in accordance with the other terms and conditions of the Contract.
8. Bidder is aware of the general nature of work to be performed by Owner and others at the Site that relates to the Work as indicated in the Bidding Documents.
9. Bidder has given Engineer written notice of all conflicts, errors, ambiguities, or discrepancies that Bidder has discovered in the Bidding Documents, and of discrepancies between Site conditions and the Contract Documents, and the written resolution thereof by Engineer is acceptable to Contractor.
10. The Bidding Documents are generally sufficient to indicate and convey understanding of all terms and conditions for performance and furnishing of the Work.
11. The submission of this Bid constitutes an incontrovertible representation by Bidder that without exception the Bid and all prices in the Bid are premised upon performing and furnishing the Work required by the Bidding Documents.

8.02 *Bidder's Certifications*

A. The Bidder certifies the following:

1. This Bid is genuine and not made in the interest of or on behalf of any undisclosed individual or entity and is not submitted in conformity with any collusive agreement or rules of any group, association, organization, or corporation.
2. Bidder has not directly or indirectly induced or solicited any other Bidder to submit a false or sham Bid.
3. Bidder has not solicited or induced any individual or entity to refrain from bidding.
4. Bidder has not engaged in corrupt, fraudulent, collusive, or coercive practices in competing for the Contract. For the purposes of this Paragraph 8.02.A:
 - a. Corrupt practice means the offering, giving, receiving, or soliciting of anything of value likely to influence the action of a public official in the bidding process.
 - b. Fraudulent practice means an intentional misrepresentation of facts made (a) to influence the bidding process to the detriment of Owner, (b) to establish bid prices at artificial non-competitive levels, or (c) to deprive Owner of the benefits of free and open competition.
 - c. Collusive practice means a scheme or arrangement between two or more Bidders, with or without the knowledge of Owner, a purpose of which is to establish bid prices at artificial, non-competitive levels.
 - d. Coercive practice means harming or threatening to harm, directly or indirectly, persons or their property to influence their participation in the bidding process or affect the execution of the Contract.

BIDDER hereby submits this Bid as set forth above:

Bidder:

(typed or printed name of organization)

By: _____
(individual's signature)

Name: _____
(typed or printed)

Title: _____
(typed or printed)

Date: _____
(typed or printed)

If Bidder is a corporation, a partnership, or a joint venture, attach evidence of authority to sign.

Attest: _____
(individual's signature)

Name: _____
(typed or printed)

Title: _____
(typed or printed)

Date: _____
(typed or printed)

Address for giving notices:

Bidder's Contact:

Name: _____
(typed or printed)

Title: _____
(typed or printed)

Phone: _____

Email: _____

Address: _____

Bidder's Contractor License No.: (if applicable) _____

SECTION 096516 - RESILIENT SHEET FLOORING

PART 1 - GENERAL

1.1 SUMMARY

- A. Section Includes:
 - 1. Unbacked vinyl sheet flooring.

1.2 ACTION SUBMITTALS

- A. Product Data: For each type of product.
- B. Samples: For each exposed product and for each color, texture, and pattern specified.

1.3 CLOSEOUT SUBMITTALS

- A. Maintenance data.

1.4 QUALITY ASSURANCE

- A. Installer Qualifications: An entity that employs installers and supervisors who are competent in techniques required by manufacturer for resilient sheet flooring installation and seaming method indicated.
 - 1. Engage an installer who employs workers for this Project who are trained or certified by resilient sheet flooring manufacturer for installation techniques required.

PART 2 - PRODUCTS

2.1 PERFORMANCE REQUIREMENTS

- A. Fire-Test-Response Characteristics: For resilient sheet flooring, as determined by testing identical products according to ASTM E648 or NFPA 253 by a qualified testing agency.
 - 1. Critical Radiant Flux Classification: Class I, not less than 0.45 W/sq. cm.

2.2 UNBACKED VINYL SHEET FLOORING

- A. Manufacturers: Subject to compliance with requirements, available manufacturers offering products that may be incorporated into the Work include, but are not limited to the following:

Hardy County Rural Development Authority, Hardy County Commission
Hardy County Health Department

060-10119

1. Armstrong Flooring, Inc.
 2. [Gerflor USA](#).
 3. [Roppe Corporation; Roppe Holding Company](#).
 4. Tarkett
- B. Product Standard: ASTM F1913.
- C. Thickness: 0.080 inch.
- D. Wearing Surface: Smooth.
- E. Sheet Width: 6.6 feet.
- F. Seamless-Installation Method: Heat welded.
- G. Colors and Patterns: Architect to select from Manufacturers full range.

2.3 INSTALLATION MATERIALS

- A. Trowelable Leveling and Patching Compounds: Latex-modified, portland-cement-based or blended hydraulic-cement-based formulation provided or approved by resilient sheet flooring manufacturer for applications indicated.
- B. Adhesives: Water-resistant type recommended by flooring and adhesive manufacturers to suit resilient sheet flooring and substrate conditions indicated.
- C. Seamless-Installation Accessories:
1. Heat-Welding Bead: Manufacturer's solid-strand product for heat welding seams.
 - a. Colors: Match flooring.
- D. Integral-Flash-Cove-Base Accessories:
1. Cove Strip: 1-inch radius provided or approved by resilient sheet flooring manufacturer.
 2. Cap Strip: Tapered vinyl cap provided or approved by resilient sheet flooring manufacturer.
 3. Corners: Metal inside and outside corners and end stops provided or approved by resilient sheet flooring manufacturer.
- E. Floor Polish: Provide protective, liquid floor-polish products recommended by resilient sheet flooring manufacturer.

PART 3 - EXECUTION

3.1 PREPARATION

- A. Prepare substrates according to resilient sheet flooring manufacturer's written instructions to ensure adhesion of resilient sheet flooring.

- B. Concrete Substrates: Prepare according to ASTM F710.
1. Verify that substrates are dry and free of curing compounds, sealers, and hardeners.
 2. Remove substrate coatings and other substances that are incompatible with adhesives and that contain soap, wax, oil, or silicone, using mechanical methods recommended by resilient sheet flooring manufacturer. Do not use solvents.
 3. Alkalinity and Adhesion Testing: Perform tests recommended by resilient sheet flooring manufacturer. Proceed with installation only after substrate alkalinity falls within range on pH scale recommended by manufacturer in writing, but not less than 5 or more than 9 pH.
 4. Moisture Testing: Perform tests so that each test area does not exceed 200 sq. ft., and perform no fewer than three tests in each installation area and with test areas evenly spaced in installation areas.
 - a. Anhydrous Calcium Chloride Test: ASTM F1869. Proceed with installation only after substrates have maximum moisture-vapor-emission rate of 3 lb of water/1000 sq. ft. in 24 hours.
 - b. Relative Humidity Test: Using in-situ probes, ASTM F2170. Proceed with installation only after substrates have a maximum 75 percent relative humidity level measurement.
- C. Fill cracks, holes, and depressions in substrates with trowelable leveling and patching compound; remove bumps and ridges to produce a uniform and smooth substrate.
- D. Do not install resilient sheet flooring until materials are the same temperature as space where they are to be installed.
1. At least 48 hours in advance of installation, move flooring and installation materials into spaces where they will be installed.
- E. Immediately before installation, sweep and vacuum clean substrates to be covered by resilient sheet flooring.

3.2 RESILIENT SHEET FLOORING INSTALLATION

- A. Comply with manufacturer's written instructions for installing resilient sheet flooring.
- B. Unroll resilient sheet flooring and allow it to stabilize before cutting and fitting.
- C. Lay out resilient sheet flooring as follows:
1. Maintain uniformity of flooring direction.
 2. Minimize number of seams; place seams in inconspicuous and low-traffic areas, at least 6 inches away from parallel joints in flooring substrates.
 3. Match edges of flooring for color shading at seams.
 4. Avoid cross seams.
- D. Scribe and cut resilient sheet flooring to butt neatly and tightly to vertical surfaces and permanent fixtures including built-in furniture, cabinets, pipes, outlets, and door frames.

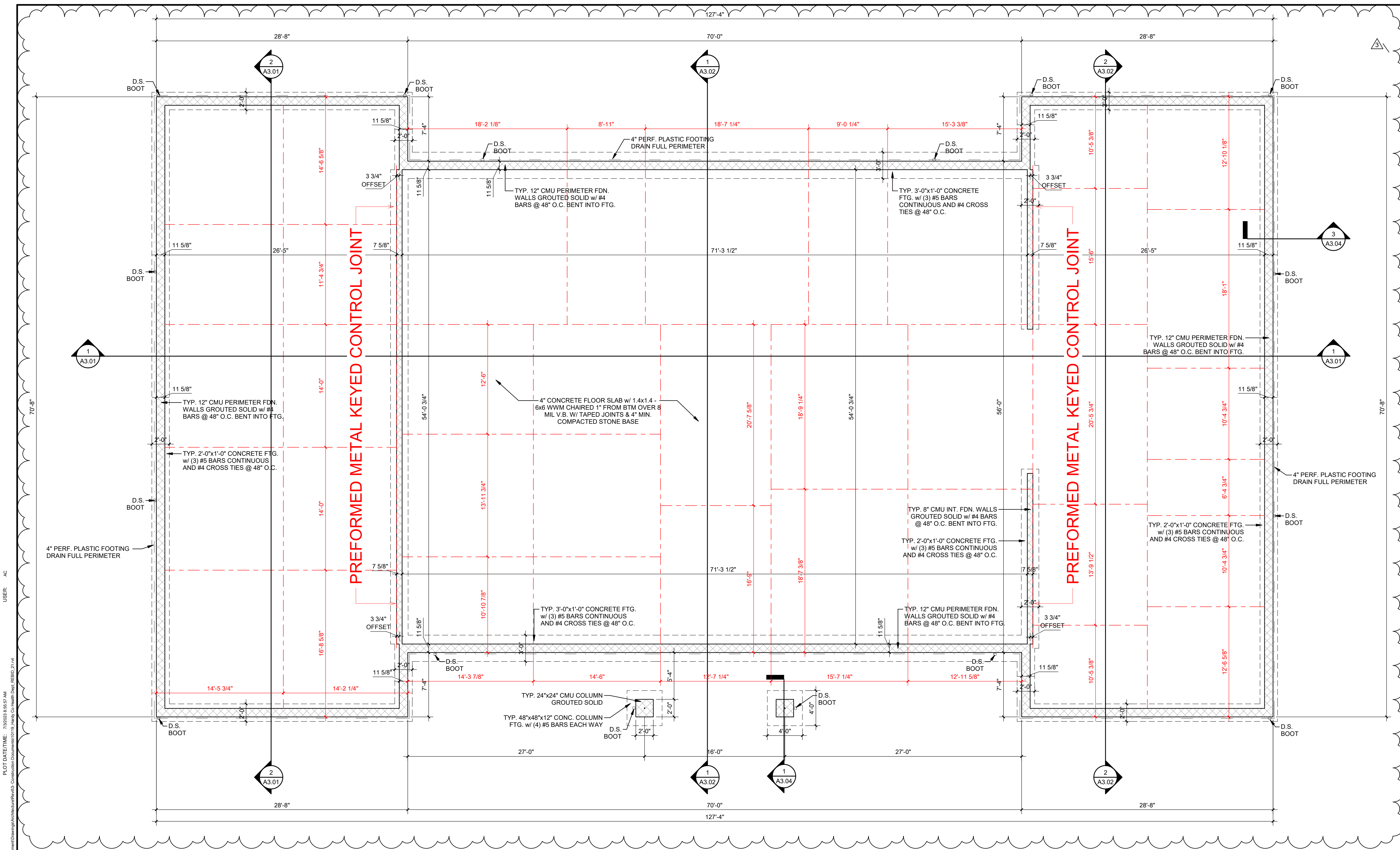
Hardy County Rural Development Authority, Hardy County Commission
Hardy County Health Department

060-10119

- E. Extend resilient sheet flooring into toe spaces, door reveals, closets, and similar openings.
- F. Maintain reference markers, holes, and openings that are in place or marked for future cutting by repeating on resilient sheet flooring as marked on substrates. Use chalk or other nonpermanent marking device.
- G. Install resilient sheet flooring on covers for telephone and electrical ducts and similar items in installation areas. Maintain overall continuity of color and pattern between pieces of flooring installed on covers and adjoining flooring. Tightly adhere flooring edges to substrates that abut covers and to cover perimeters.
- H. Adhere resilient sheet flooring to substrates using a full spread of adhesive applied to substrate to produce a completed installation without open cracks, voids, raising and puckering at joints, telegraphing of adhesive spreader marks, and other surface imperfections.
- I. Seamless Installation:
 - 1. Heat-Welded Seams: Comply with ASTM F1516. Rout joints and heat weld with welding bead to fuse sections permanently into a seamless flooring installation. Prepare, weld, and finish seams to produce surfaces flush with adjoining flooring surfaces.
- J. Integral-Flash-Cove Base: Cove resilient sheet flooring 4 inches up vertical surfaces. Support flooring at horizontal and vertical junction with cove strip. Butt at top against cap strip.
 - 1. Install metal corners at inside and outside corners.
- K. Floor Polish: Remove soil, adhesive, and blemishes from flooring surfaces before applying liquid floor polish.
 - 1. Apply one coat(s).

END OF SECTION 096516

THE INFORMATION CONTAINED HEREIN IS THE SOLE PROPERTY OF THE THRASHER GROUP, INC. REPRODUCTION OF THESE DOCUMENTS IN WHOLE, OR IN PART FOR ANY REASON WITHOUT PRIOR WRITTEN PERMISSION IS STRICTLY PROHIBITED. COPYRIGHT © 2023 THE THRASHER GROUP, INC.



PREFORMED METAL KEYED CONTROL JOINT

PREFORMED METAL KEYED CONTROL JOINT

LAYOUT TAB: FOUNDATION PLAN
 CAD FILE: R:\000005-10119\Hardy County Health Department\Drawings\Architectural\Rev3 - Construction Documents\10119_Hardy Co Health Dept. REBID_21.rvt
 PLOT DATE/TIME: 7/3/2023 8:55:57 AM
 USER: AC

NO.	BY	DATE	DESCRIPTION
3		6-30-23	2.3 ADD Concrete Control Joint Layout and Notes

HARDY COUNTY HEALTH DEPARTMENT - REBID
 HARDY COUNTY COMMISSION
 MOOREFIELD, WEST VIRGINIA
 JUNE 14, 2023
 CONSTRUCTION DOCUMENTS

DRAWN: AC DATE: 6/14/2023
 CHECKED: MB DATE: 6/14/2023
 APPROVED: LG DATE: 6/14/2023

PROJECT No. 060-10119

FOUNDATION PLAN

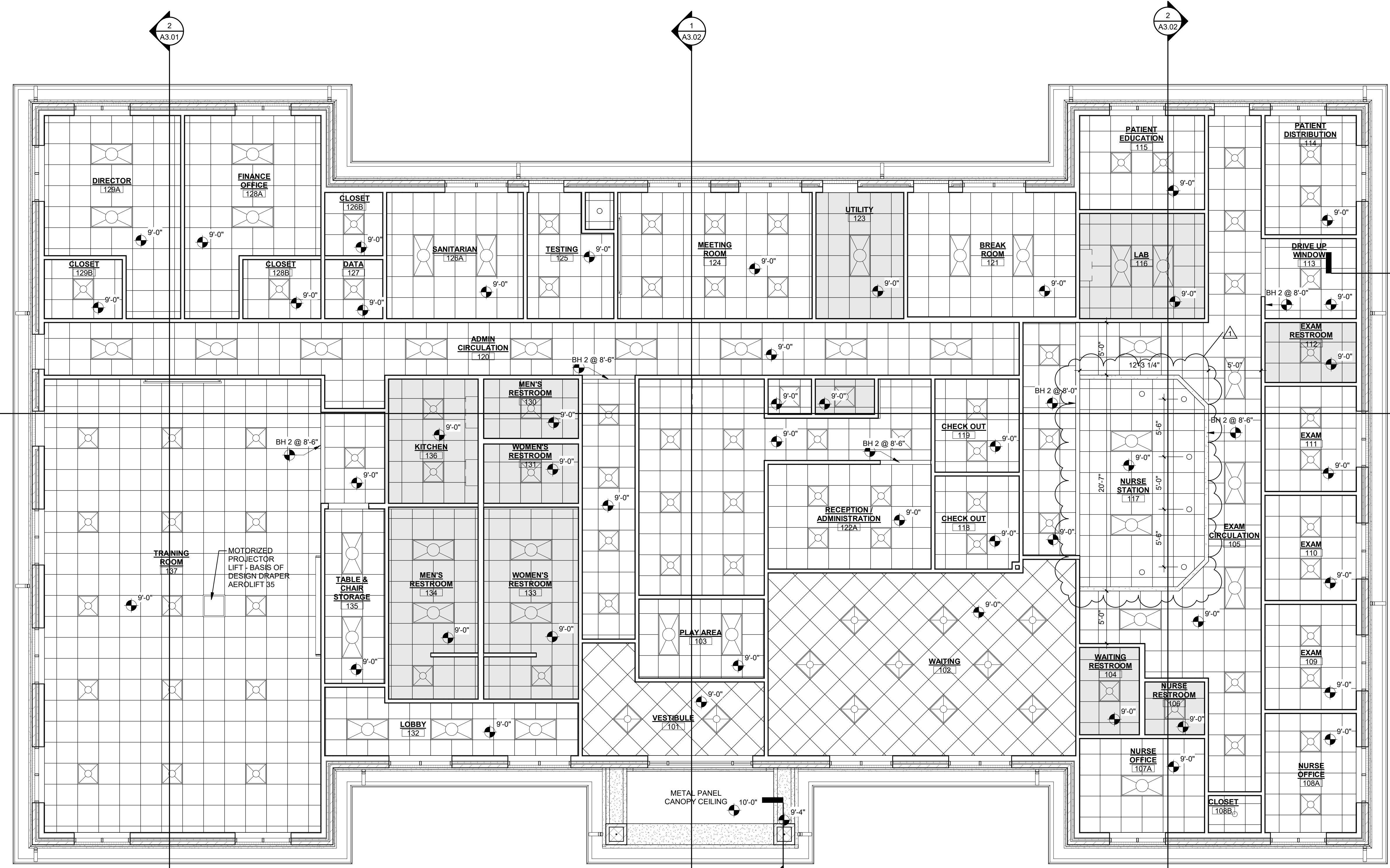
SHEET No.

S1.01R

1 HEALTH DEPARTMENT FOUNDATION PLAN
 S1.01R 3/16" = 1'-0"

NOTES:
 TYP. 12" NOM. CMU FDN. WALLS GROUTED SOLID w/ #4 BARS @ 48" O.C. BENT INTO FTG. FULL PERIMETER
 TYP. 2'-0"x1'-0" CONCRETE FTG. w/ (3) #5 BARS CONTINUOUS AND #4 CROSS TIES @ 48" O.C. FULL PERIMETER
 4" PERF. PLASTIC FOOTING DRAIN FULL PERIMETER (REFER TO SITE PLAN FOR FOOTING DRAIN COLLECTION LOCATIONS)
 SAW CUT CONTROL JOINTS ARE DIMENSIONED TO EDGE OF STUD WALL PLATES ABOVE
 ADDITIONAL KEYED CONSTRUCTION JOINTS MAY BE ADDED IN PLACE OF SAW CUT JOINTS AT THE CONTRACTOR'S OPTION

THE INFORMATION CONTAINED HEREIN IS THE SOLE PROPERTY OF THE THRASHER GROUP, INC. REPRODUCTION OF THESE DOCUMENTS IN WHOLE, OR IN PART FOR ANY REASON WITHOUT PRIOR WRITTEN PERMISSION IS STRICTLY PROHIBITED. COPYRIGHT © 2023 THE THRASHER GROUP, INC.



1 REFLECTED CEILING PLAN
 3/16" = 1'-0"

REFLECTED CEILING PLAN LEGEND
 NOTE: MECHANICAL ITEMS AND EMERGENCY FIXTURES NOT SHOWN. CONTRACTOR TO COORDINATE RCP BETWEEN ARCHITECTURAL AND MEP DRAWINGS

- ACT-1: 2x2' LAY-IN CEILING TILE
- ACT-2: WATER-REPELLENT/HUMIDITY RESISTANT 2x2' LAY-IN CEILING TILE
- 2x4' LIGHT FIXTURE
- 2x2' LIGHT FIXTURE
- GYPSUM BOARD CEILING
- WALLS BELOW
- BULK HEAD
- RECESSED DOWN LIGHT

NO.	BY	DATE	DESCRIPTION
1	MLB	6-30-23	2: Change bulkhead @ Nurse's Station to Bulkhead #1. Adjusted ceiling grid.

HARDY COUNTY HEALTH DEPARTMENT - REBID
 HARDY COUNTY COMMISSION
 MOOREFIELD, WEST VIRGINIA
 JUNE 14, 2023
 CONSTRUCTION DOCUMENTS

DRAWN: AC DATE: 6/14/2023
 CHECKED: MB DATE: 6/14/2023
 APPROVED: LG DATE: 6/14/2023

PROJECT No. 060-10119

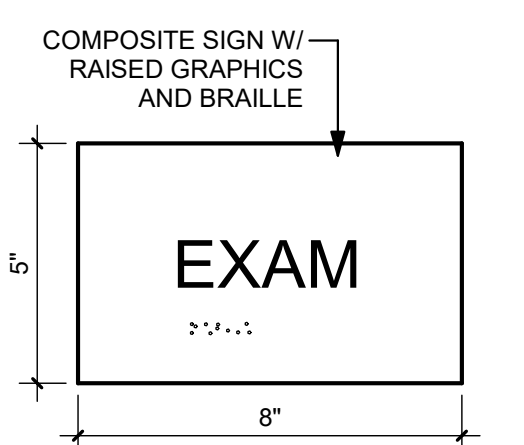
REFLECTED CEILING PLAN

SHEET No.

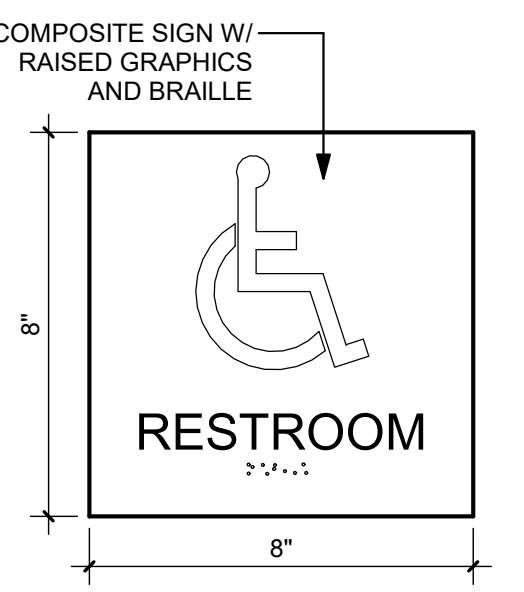
A1.03R

DOOR, FRAME, & HARDWARE SCHEDULE

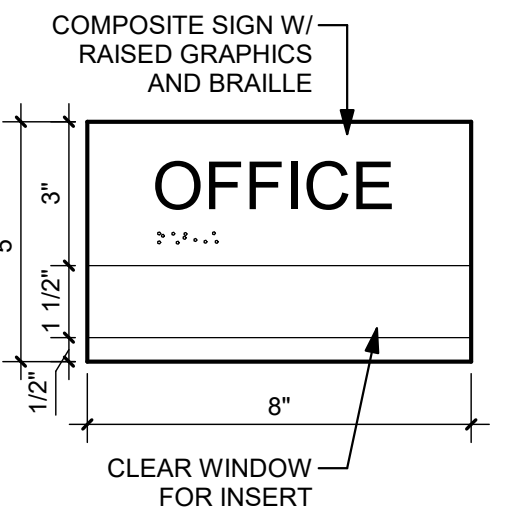
DOOR #	TYPE	DOOR				FINISH	FRAME		ASSEMBLY			SIGNAGE		
		WIDTH	HEIGHT	THICKNESS	MATERIAL		FRAME TYPE	MATERIAL	FRAME FINISH	FIRE RATING	HARDWARE	REMARKS	TYPE	NAME
100A	1	6'-0"	7'-0"	1 3/4"	ALUM.	NATURAL ANODIZED	1	ALUM.	PAINTED	20		1/4" TEMP. GLASS		
100B	2	3'-0"	7'-0"	1 3/4"	GALV. H.M.	PAINTED	2	GALV. H.M.	PAINTED	14				
100C	2	3'-0"	7'-0"	1 3/4"	GALV. H.M.	PAINTED	2	GALV. H.M.	PAINTED	12				
100D	2	3'-0"	7'-0"	1 3/4"	GALV. H.M.	PAINTED	2	GALV. H.M.	PAINTED	12				
100E	2	3'-0"	7'-0"	1 3/4"	GALV. H.M.	PAINTED	2	GALV. H.M.	PAINTED	12				
100F	2	3'-0"	7'-0"	1 3/4"	GALV. H.M.	PAINTED	2	GALV. H.M.	PAINTED	14				
100G	2	3'-0"	7'-0"	1 3/4"	GALV. H.M.	PAINTED	2	GALV. H.M.	PAINTED	13				
102A	7	3'-0"	7'-0"	1 3/4"	SCWD	STAINED	2	H.M.	PAINTED	21			1	WAITING
102B	5	3'-0"	7'-0"	1 3/4"	SCWD	STAINED	5	H.M.	PAINTED	03			1	WAITING
103	-	5'-0"	7'-0"	0"	-	-	7	H.M.	PAINTED	11				CASED OPENING
104	5	3'-0"	7'-0"	1 3/4"	SCWD	STAINED	5	H.M.	PAINTED	01			2	RESTROOM
105	5	3'-0"	7'-0"	1 3/4"	SCWD	STAINED	5	H.M.	PAINTED	17				
106	5	3'-0"	7'-0"	1 3/4"	SCWD	STAINED	5	H.M.	PAINTED	01			1	RESTROOM
107A	6	3'-0"	7'-0"	1 3/4"	SCWD	STAINED	1	H.M.	PAINTED	05			3	OFFICE
108A	6	3'-0"	7'-0"	1 3/4"	SCWD	STAINED	1	H.M.	PAINTED	05			3	OFFICE
108B	5	3'-0"	7'-0"	1 3/4"	SCWD	STAINED	5	H.M.	PAINTED	08				
109	5	3'-0"	7'-0"	1 3/4"	SCWD	STAINED	5	H.M.	PAINTED	02			1	EXAM
110	5	3'-0"	7'-0"	1 3/4"	SCWD	STAINED	5	H.M.	PAINTED	02			1	EXAM
111	5	3'-0"	7'-0"	1 3/4"	SCWD	STAINED	5	H.M.	PAINTED	02			1	EXAM
112	5	3'-0"	7'-0"	1 3/4"	SCWD	STAINED	5	H.M.	PAINTED	01			2	RESTROOM
114	6	3'-0"	7'-0"	1 3/4"	SCWD	STAINED	1	H.M.	PAINTED	06			1	PATIENT DISTRIBUTION
115	6	3'-0"	7'-0"	1 3/4"	SCWD	STAINED	1	H.M.	PAINTED	06			1	PATIENT EDUCATION
116	5	3'-0"	7'-0"	1 3/4"	SCWD	STAINED	5	H.M.	PAINTED	10	90 MIN.		1	LAB
118A	5	3'-0"	7'-0"	1 3/4"	SCWD	STAINED	5	H.M.	PAINTED	06			1	CHECK OUT 1
118B	5	3'-0"	7'-0"	1 3/4"	SCWD	STAINED	5	H.M.	PAINTED	06			1	CHECK OUT 1
119A	5	3'-0"	7'-0"	1 3/4"	SCWD	STAINED	5	H.M.	PAINTED	06			1	CHECK OUT 2
119B	5	3'-0"	7'-0"	1 3/4"	SCWD	STAINED	5	H.M.	PAINTED	06			1	CHECK OUT 2
120A	5	3'-0"	7'-0"	1 3/4"	SCWD	STAINED	5	H.M.	PAINTED	03			1	EMPLOYEES ONLY
120B	6	3'-0"	7'-0"	1 3/4"	SCWD	STAINED	1	H.M.	PAINTED	21			1	EMPLOYEES ONLY
121	6	3'-0"	7'-0"	1 3/4"	SCWD	STAINED	1	H.M.	PAINTED	06			1	BREAK ROOM
122A	6	3'-0"	7'-0"	1 3/4"	SCWD	STAINED	1	H.M.	PAINTED	04			1	RECEPTION
122B	5	3'-0"	7'-0"	1 3/4"	SCWD	STAINED	5	H.M.	PAINTED	15				
123	5	3'-0"	7'-0"	1 3/4"	SCWD	STAINED	5	H.M.	PAINTED	09	90 MIN.		1	UTILITY
123.1	6	3'-0"	7'-0"	1 3/4"	SCWD	STAINED	5	H.M.	PAINTED	09	60 MIN.		1	CLOSET
124	6	3'-0"	7'-0"	1 3/4"	SCWD	STAINED	1	H.M.	PAINTED	06			1	MEETING ROOM
125A	5	3'-0"	7'-0"	1 3/4"	SCWD	STAINED	5	H.M.	PAINTED	16	90 MIN.			
125B	4	2'-8"	7'-0"	1 3/4"	SCWD	STAINED	4	H.M.	PAINTED	05				
126A	6	3'-0"	7'-0"	1 3/4"	SCWD	STAINED	1	H.M.	PAINTED	05			3	OFFICE
126B	5	3'-0"	7'-0"	1 3/4"	SCWD	STAINED	5	H.M.	PAINTED	06				
127	5	3'-0"	7'-0"	1 3/4"	SCWD	STAINED	5	H.M.	PAINTED	07			1	DATA
128A	6	3'-0"	7'-0"	1 3/4"	SCWD	STAINED	1	H.M.	PAINTED	05			3	OFFICE
128B	5	3'-0"	7'-0"	1 3/4"	SCWD	STAINED	5	H.M.	PAINTED	06				
129A	6	3'-0"	7'-0"	1 3/4"	SCWD	STAINED	1	H.M.	PAINTED	05			3	OFFICE
129B	5	3'-0"	7'-0"	1 3/4"	SCWD	STAINED	5	H.M.	PAINTED	06				
130	5	3'-0"	7'-0"	1 3/4"	SCWD	STAINED	5	H.M.	PAINTED	01			2	MEN
131	5	3'-0"	7'-0"	1 3/4"	SCWD	STAINED	5	H.M.	PAINTED	01			2	WOMEN
132	7	3'-0"	7'-0"	1 3/4"	SCWD	STAINED	2	H.M.	PAINTED	21				
133	5	3'-0"	7'-0"	1 3/4"	SCWD	STAINED	5	H.M.	PAINTED	03			2	WOMEN
134	5	3'-0"	7'-0"	1 3/4"	SCWD	STAINED	5	H.M.	PAINTED	03			2	MEN
135	3	3'-6"	8'-0"	1 3/4"	SCWD	STAINED	3	H.M.	PAINTED	19			1	STORAGE
136	5	3'-0"	7'-0"	1 3/4"	SCWD	STAINED	5	H.M.	PAINTED	04			1	KITCHEN
137A	6	3'-0"	7'-0"	1 3/4"	SCWD	STAINED	1	H.M.	PAINTED	18			1	TRAINING
137B	6	3'-0"	7'-0"	1 3/4"	SCWD	STAINED	1	H.M.	PAINTED	18			1	TRAINING



1 SIGNAGE - TYPE 1
A6.01R 3" = 1'-0"



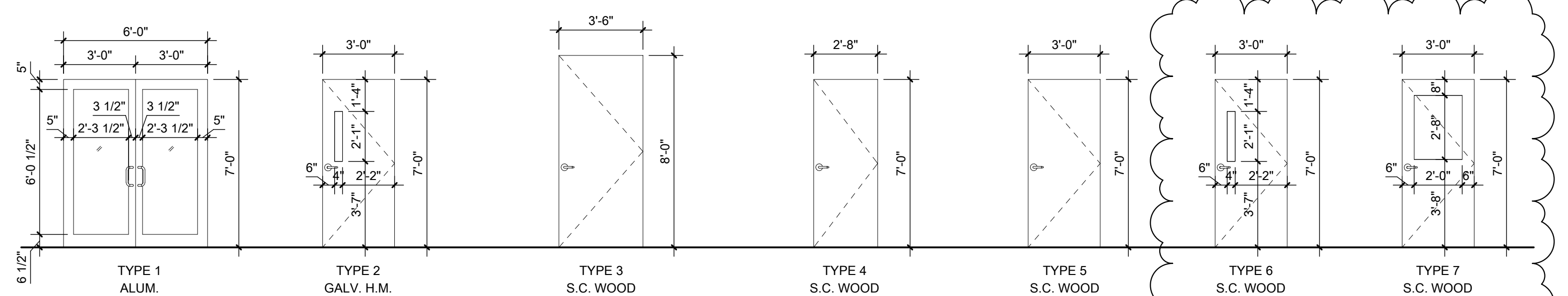
2 SIGNAGE - TYPE 2
A6.01R 3" = 1'-0"

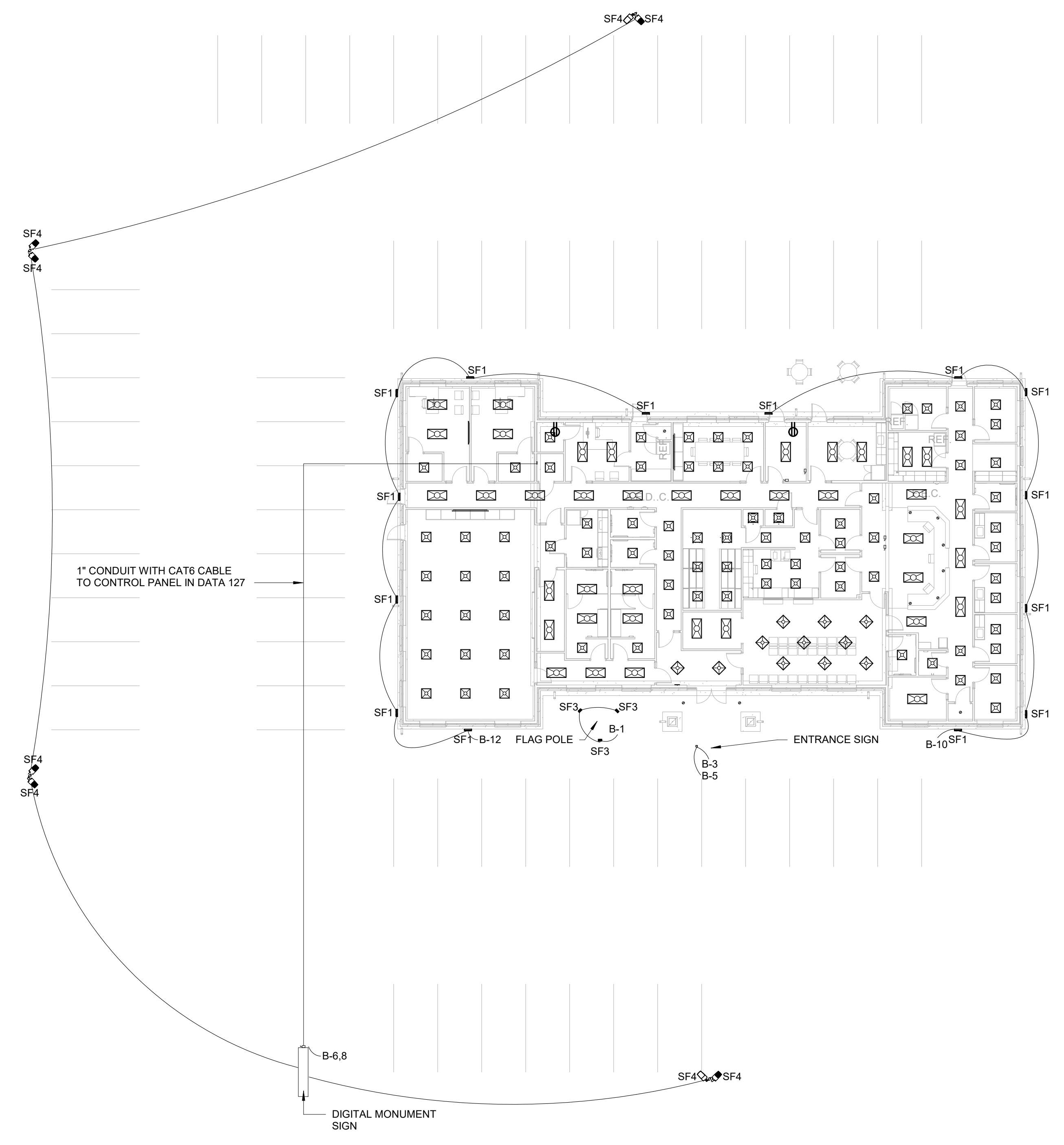
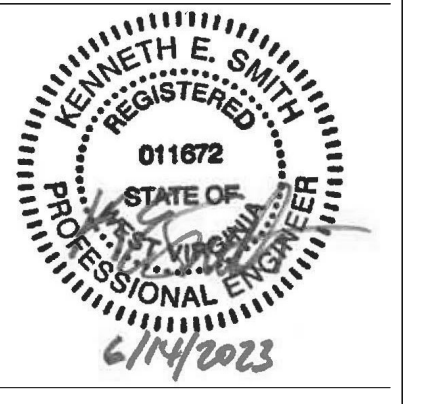


3 SIGNAGE - TYPE 3
A6.01R 3" = 1'-0"

ROOM FINISH SCHEDULE

ROOM #	ROOM NAME	FLOOR FINISH	BASE	WALL FINISH				CEILING HEIGHT	CEILING FINISH	REMARKS
				NORTH	EAST	SOUTH	WEST			
101	VESTIBULE	LVP	4" RESILIENT	PAINT	PAINT	PAINT	PAINT	9'-0"	2x2 ACT-1	
102	WAITING	LVP	4" RESILIENT	PAINT	PAINT	PAINT	PAINT	9'-0"	2x2 ACT-1	
103	PLAY AREA	LVP	4" RESILIENT	PAINT	PAINT	PAINT	PAINT	9'-0"	2x2 ACT-1	
104	WAITING RESTROOM	HRS	4" INTEGRAL HRS	PAINT	PAINT	PAINT	PAINT	9'-0"	2x2 ACT-2	
105	EXAM CIRCULATION	LVP	4" RESILIENT	PAINT	PAINT	PAINT	PAINT	9'-0"	2x2 ACT-1	
106	NURSE RESTROOM	HRS	4" INTEGRAL HRS	PAINT	PAINT	PAINT	PAINT	9'-0"	2x2 ACT-2	
107A	NURSE OFFICE	LVT	4" RESILIENT	PAINT	PAINT	PAINT	PAINT	9'-0"	2x2 ACT-1	
107B	CLOSET	LVT	4" RESILIENT	PAINT	PAINT	PAINT	PAINT	9'-0"	2x2 ACT-1	
108A	NURSE OFFICE	LVT	4" RESILIENT	PAINT	PAINT	PAINT	PAINT	9'-0"	2x2 ACT-1	
108B	CLOSET	LVT	4" RESILIENT	PAINT	PAINT	PAINT	PAINT	9'-0"	2x2 ACT-1	
109	EXAM	LVT	4" RESILIENT	PAINT	PAINT	PAINT	PAINT	9'-0"	2x2 ACT-1	
110	EXAM	LVT	4" RESILIENT	PAINT	PAINT	PAINT	PAINT	9'-0"	2x2 ACT-1	
111	EXAM	LVT	4" RESILIENT	PAINT	PAINT	PAINT	PAINT	9'-0"	2x2 ACT-1	
112	EXAM RESTROOM	HRS	4" INTEGRAL HRS	PAINT	PAINT	PAINT	PAINT	9'-0"	2x2 ACT-2	
113	DRIVE UP WINDOW	LVP	4" RESILIENT	PAINT	PAINT	PAINT	PAINT	9'-0"	2x2 ACT-1	
114	PATIENT DISTRIBUTION	LVT	4" RESILIENT	PAINT	PAINT	PAINT	PAINT	9'-0"	2x2 ACT-1	
115	PATIENT EDUCATION	LVT	4" RESILIENT	PAINT	PAINT	PAINT	PAINT	9'-0"	2x2 ACT-1	
116	LAB	HRS	4" INTEGRAL HRS	PAINT	PAINT	PAINT	PAINT	9'-0"	2x2 ACT-2	
117	NURSE STATION	LVP	4" RESILIENT	PAINT	PAINT	PAINT	PAINT	9'-0"	2x2 ACT-1	
118	CHECK OUT	LVT	4" RESILIENT	PAINT	PAINT	PAINT	PAINT	9'-0"	2x2 ACT-1	
119	CHECK OUT	LVT	4" RESILIENT	PAINT	PAINT	PAINT	PAINT	9'-0"	2x2 ACT-1	
120	ADMIN CIRCULATION	LVP	4" RESILIENT	PAINT	PAINT	PAINT	PAINT	9'-0"	2x2 ACT-1	
121	BREAK ROOM	LVT	4" RESILIENT	PAINT	PAINT	PAINT	PAINT	9'-0"	2x2 ACT-1	
122A	RECEPTION / ADMINISTRATION	LVT/ CARPET	4" RESILIENT	PAINT	PAINT	PAINT	PAINT	9'-0"	2x2 ACT-1	
122B	CLOSET	LVT	4" RESILIENT	PAINT	PAINT	PAINT	PAINT	9'-0"	2x2 ACT-1	
123	UTILITY	SEALED CONC.	4" RESILIENT	PAINT	PAINT	PAINT	PAINT	9'-0"	2x2 ACT-2	
123.1	JC	SEALED CONC.	4" RESILIENT	PAINT	PAINT	PAINT	PAINT	9'-0"	2x2 ACT-2	
124	MEETING ROOM	CARPET	4" RESILIENT	PAINT	PAINT	PAINT	PAINT	9'-0"	2x2 ACT-1	
125	TESTING	HRS	4" INTEGRAL HRS	PAINT	PAINT	PAINT	PAINT	9'-0"	2x2 ACT-1	
126A	SANITARIAN	LVT	4" RESILIENT	PAINT	PAINT	PAINT	PAINT	9'-0"	2x2 ACT-1	
126B	CLOSET	LVT	4" RESILIENT	PAINT	PAINT	PAINT	PAINT	9'-0"	2x2 ACT-1	
127	DATA	SEALED CONC.	4" RESILIENT	PAINT	PAINT	PAINT	PAINT	9'-0"	2x2 ACT-1	
128A	FINANCE OFFICE	LVT	4" RESILIENT	PAINT	PAINT	PAINT	PAINT	9'-0"	2x2 ACT-1	
128B	CLOSET	LVT	4" RESILIENT	PAINT	PAINT	PAINT	PAINT	9'-0"	2x2 ACT-1	
129A	DIRECTOR	LVT	4" RESILIENT	PAINT	PAINT	PAINT	PAINT	9'-0"	2x2 ACT-1	
129B	CLOSET	LVT	4" RESILIENT	PAINT	PAINT	PAINT	PAINT	9'-0"	2x2 ACT-1	
130	MEN'S RESTROOM	HRS	4" INTEGRAL HRS	PAINT	PAINT	PAINT	PAINT	9'-0"	2x2 ACT-2	
131	WOMEN'S RESTROOM	HRS	4" INTEGRAL HRS	PAINT	PAINT	PAINT	PAINT	9'-0"	2x2 ACT-2	
132	LOBBY	LVP	4" RESILIENT	PAINT	PAINT	PAINT	PAINT	9'-0"	2x2 ACT-1	
133	WOMEN'S RESTROOM	HRS	4" INTEGRAL HRS	PAINT	PAINT	PAINT	PAINT	9'-0"	2x2 ACT-2	
134	MEN'S RESTROOM	HRS	4" INTEGRAL HRS	PAINT	PAINT	PAINT	PAINT	9'-0"	2x2 ACT-2	
135	TABLE & CHAIR STORAGE	SEALED CONC.	4" RESILIENT	PAINT	PAINT	PAINT	PAINT	9'-0"	2x2 ACT-1	
136	KITCHEN	HRS	4" INTEGRAL HRS	PAINT	PAINT	PAINT	PAINT	9'-0"	2x2 ACT-2	
137	TRAINING ROOM	CARPET	4" RESILIENT	PAINT	PAINT	PAINT	PAINT	9'-0"	2x2 ACT-1	





SITE POWER & LIGHTING PLAN
1/16" = 1'-0"

NO.	BY	DATE	DESCRIPTION

HARDY COUNTY HEALTH DEPARTMENT - REBID
HARDY COUNTY COMMISSION
MOOREFIELD, WEST VIRGINIA
JUNE 14, 2023
CONSTRUCTION DOCUMENTS

DRAWN: AGC DATE: 04/21/2023
CHECKED: TTG DATE: 04/21/2023
APPROVED: TTG DATE: 04/21/2023

PROJECT No.
060-10119

SITE POWER AND LIGHTING PLAN

SHEET No.

E5.00R

