

**CITY OF CLARKSBURG SANITARY BOARD
HARRISON COUNTY, WEST VIRGINIA**

MILFORD AREA UPGRADES

ADDENDUM #2

MAY 10, 2023

THRASHER PROJECT #T20-11053

TO WHOM IT MAY CONCERN:

A Pre-Bid Conference was held on Thursday, April 20, 2023, at 10:00 AM for the above-referenced project. The following are clarifications and responses to questions posed by contractors for the above-referenced project.

A. GENERAL

**THE BID FORM HAS BEEN REVISED. YOU MUST USE THE REVISED
BID FORM WHEN PREPARING YOUR BID PACKAGE FOR THIS
PROJECT.**

B. DRAWINGS

1. Revised Index – Revised to reflect new plan sheets.
2. Revised Sheets 4&4A – Revised Method of Installation. Base Bid (Sheet 4 & 4A) and Deductive Alternate #1.
 - a. Easement will be provided at top of hill for pull-back.
3. Sheets 5&5A – Additive Bid Alternate #1.
4. Sheets 6&6A – Additive Bid Alternate #2.

C. QUESTIONS AND RESPONSES

1. QUESTION

Who is responsible for construction stakeout?

RESPONSE

The Contractor is responsible for construction stakeout. A bid item has been added to the Bid Form. **YOU MUST USE THE REVISED BID FORM WHEN PREPARING YOUR BID PACKAGE FOR THIS PROJECT.**

2. QUESTION

Is there an as-built required? If so, who is responsible for performing and obtaining as-built survey data?

RESPONSE

An as-built survey is not required. However, the Contractor is responsible for maintaining a clean, legible, full-sized set of redlined construction plans and shall provide them to the Owner and Engineer upon project completion.

3. QUESTION

Can the Engineer provide the WVDOH/DOT case numbers for traffic control plans when working on Milford Street, Sampson Street, and Liberty Avenue, respectively?

RESPONSE

The Contractor is responsible for traffic control coordination with the WVDOH. A lane closure is anticipated to complete the work on Sheets 1-3.

4. QUESTION

Is any bypass pumping required? If so, where?

RESPONSE

Yes, bypass pumping will be required when working on Sampson Street and at the intersection of Milford Street and Sampson Street. Bypass pumping is not anticipated elsewhere.

5. QUESTION

Do federal wage rates apply to this project?

RESPONSE

No, federal wage rates do not apply to this project.

6. QUESTION

What does the “DW” on Bid Item 35 mean?

RESPONSE

Driveway.

7. QUESTION

Is there any geotechnical data available?

RESPONSE

No geotechnical investigations were performed for this project.

8. QUESTION

Getting an excavator or other equipment to the 24in RCP (Storm Line 5) tie-in from Temple Terrace roadway is steep and arduous, and may require tree clearing. Is it possible to extend the HDD to the top of the hill and tie-in to DI STYLST-93?

RESPONSE

This scope of work has changed. Please see revised sheets per this addendum. A tie-in at the top of the hill will be considered.

9. QUESTION

Trees that would likely have to be cleared were located between Liberty Ave and Milford Street (1 in sewer route), the 24in RCP tie-in noted in question 8, and to build out the dump rock outlet on Sampson Street and access the sewer tie-in. Does the City have a disposal area, or should the Contractor assume landfill or other means of disposal?

RESPONSE

This scope of work regarding Liberty Avenue has changed. Please see revised sheets per this addendum. The City has a disposal area for acceptable soils, but Contractor is responsible for the proper disposal of all other materials.

10. QUESTION

Are guardrails which are anticipated to be impacted on Liberty Avenue and Milford Street intended to be removed and replaced?

RESPONSE

The existing guardrail can be taken down during construction and put back after construction has been completed. It is not the intent of the project to replace the existing guardrail with new.

11. QUESTION

There are no details on what all is involved with the sinkhole repair. How big is the area? Any specifics on back fill requirements?

RESPONSE

The sinkhole is approximately 8 feet in diameter and 8 feet deep. The sinkhole shall be filled with excavated material and topped with 4-inches of topsoil.

12. QUESTION

On Plan Sheet 4, it shows both a Jack & Bore and an HDD, with different footage for each. Which is it?

RESPONSE

This sheet has been revised. Plan Sheets 4 & 4A depict a HDD, which shall be part of the Base Bid. The Contractor shall also provide alternate prices for the work shown on Plan Sheets 5, 5A, 6, and 6A. Please see the revised and added Plan Sheets and the revised bid form included with this Addendum. **YOU MUST USE THE REVISED BID FORM WHEN PREPARING YOUR BID PACKAGE FOR THIS PROJECT.**

13. QUESTION

If the Route 19 crossing shown on Sheet 4 is a 48-inch Jack & Bore, what are the additional insurance requirements necessary for tunnelling with that diameter of pipe?

RESPONSE

Jack & Bore installation previously shown on Sheet #4 has been corrected to 36-inch steel on added Plan Sheets 5, 5A, 6 and 6A. All insurance requirements for this project are described in the Supplementary General Conditions of the Contract Documents.

14. QUESTION

The Contractor is concerned about the potential for slips on Liberty Ave and Milford Street in the area of the Milford Street road crossing due to existing pavements cracking and slipping. Will the City assume liability for further slipping, road damage and or any other damages resulting from the Work to cross these roads?

RESPONSE

The City will not assume liability for road damage.

D. CLARIFICATIONS

1. B&O tax associated with this project will be paid to the City of Clarksburg when working within city limits. All work is located within City limits. B&O tax for work within city limits is 2%.
2. The Contract Times are 90 days to Substantial Completion and 120 days to Final Completion.
3. Additional instructions to Bidders:
 - a. There is a new Bid Form.

- b. The project will be awarded upon the sum of the totals for "Base Bid Sheets 1-3" and "Base Bid Sheets 4&4A."
- c. If the Total Bid amount exceeds available funds, the Owner may opt to apply the deductive alternate and one of the two additive alternates.
 - i. Applying alternates will not affect low bid or project award.
- d. Each Bidder is required to submit a bid for each Deductive and Additive Alternate Bid.

If you have any questions or comments, please feel free to contact me at your earliest convenience. As a reminder, bids will be received until 2:00 P.M. on May 18, 2023, at the City of Clarksburg Municipal Building, 222 W. Main St., Clarksburg, WV 26301. Good luck to everyone and thank you for your interest in the project.

Sincerely,

THE THRASHER GROUP, INC.



DANIEL E. FERRELL, P.E.
Project Manager

Enclosures: C-410 Bid Form
Plan Sheets: Index, 4, 4A, 5, 5A, 6, and 6A



BID FORM FOR CONSTRUCTION CONTRACT

The terms used in this Bid with initial capital letters have the meanings stated in the Instructions to Bidders, the General Conditions, and the Supplementary Conditions.

ARTICLE 1—OWNER AND BIDDER

1.01 This Bid is submitted to:

*Clarksburg Sanitary Board
222 West Main Street
Clarksburg, WV 26301*

1.02 The undersigned Bidder proposes and agrees, if this Bid is accepted, to enter into an Agreement with Owner in the form included in the Bidding Documents to perform all Work as specified or indicated in the Bidding Documents for the prices and within the times indicated in this Bid and in accordance with the other terms and conditions of the Bidding Documents.

ARTICLE 2—ATTACHMENTS TO THIS BID

2.01 The following documents are submitted with and made a condition of this Bid:

A. Bid Opening Requirements

ARTICLE 3—BASIS OF BID—LUMP SUM BID AND UNIT PRICES

GENERAL

The Bidder shall take notice of and shall be responsible for any local or state taxes levied and applicable, and the cost for the same shall be included as part of the submitted Bid.

The total Bid cost stated includes a complete operating installation including furnishing and installation of any and all changes or additions in plans, piping, mechanical work, additional electrical work, accessories, controls, etc. necessary to accommodate alternative equipment systems or materials used in construction.

BID PROPOSAL

The Bidder agrees to perform all required Work described in the detailed Specifications and as shown on the Plans for the complete construction and placing in satisfactory operation the Milford Area Upgrades. The Project "Sequence of Construction" has been detailed in the Drawings and Specification Division 1, Project Summary, Section 011000. The Bidder agrees to perform all the Work proposed for the total of the following Bid prices.

3.01 *Lump Sum Bids*

A. Bidder will complete the Work in accordance with the Contract Documents for the lump sum (stipulated) price(s), together with any Unit Prices indicated in Paragraph 3.02 and shown in the bid schedule.

B. Lump Sum Bids may be one of the following:

1. Lump Sum Price (Single Lump Sum)
2. Lump Sum Price (Base Bid and Alternates)

3. Lump Sum Price (Sectional Lump Sum Bids)

- C. All specified cash allowance(s) are included in the price(s) set forth in the bid schedule, and have been computed in accordance with Paragraph 13.02 of the General Conditions.
- D. All specified contingency allowances are included in the price(s) set forth in the bid schedule, and have been computed in accordance with Paragraph 13.02 of the General Conditions.

3.02 Unit Price Bids

- A. Bidder will perform the following Work at the indicated unit prices as shown in the Bid Schedule.
- B. Bidder acknowledges that:
1. each Bid Unit Price includes an amount considered by Bidder to be adequate to cover Contractor's overhead and profit for each separately identified item, and
 2. estimated quantities are not guaranteed, and are solely for the purpose of comparison of Bids, and final payment for all Unit Price Work will be based on actual quantities, determined as provided in the Contract Documents.

3.03 Total Bid Price (Lump Sum and Unit Prices)

**PROPOSED
MILFORD AREA UPGRADES
FOR THE**

**CLARKSBURG SANITARY BOARD
HARRISON COUNTY, WEST VIRGINIA
THRASHER PROJECT # T20-11053**

BASE BID SCHEDULE – SHEETS 1-3

NOTE: Bid Unit Price amounts are to be shown in both words and figures. In case of discrepancy, the Bid Unit Price shown in words will govern. Bids shall include sales tax and all other applicable taxes and fees.

Bid Item	Quantity	Description with Unit Price Written In Words	Unit Price (In Figures)	Total Price (In Figures)
1	1 LS	Mobilization/Demobilization		
			Dollars	
			Cents \$	\$
2	1 LS	Erosion and Sediment Control		
			Dollars	
			Cents \$	\$

Bid Item	Quantity	Description with Unit Price Written In Words	Unit Price (In Figures)	Total Price (In Figures)
3	1 LS	Videotaping of Project Area		
			Dollars	
			Cents	\$
				\$
4	10 LF	24" HDPE DR-11 (0'-6')		
			Dollars	
			Cents	\$
				\$
5	175 LF	24" HDPE DR-13.5 (0'-6')		
			Dollars	
			Cents	\$
				\$
6	215 LF	18" HDPE DR-11 (0'-6')		
			Dollars	
			Cents	\$
				\$
7	55 LF	12" HDPE DR-11 (0'-6')		
			Dollars	
			Cents	\$
				\$
8	25 LF	12" Ductile Iron CL-50 Pipe (0'-6')		
			Dollars	
			Cents	\$
				\$
9	100 LF	12" Ductile Iron CL-50 Pipe (6'-9')		
			Dollars	
			Cents	\$
				\$
10	125 LF	12" Ductile Iron CL-50 Pipe (9'-12')		
			Dollars	
			Cents	\$
				\$
11	125 LF	24" HDPE DR-13.5 (Variable Grade)		
			Dollars	
			Cents	\$
				\$

Bid Item	Quantity	Description with Unit Price Written In Words	Unit Price (In Figures)	Total Price (In Figures)
12	15 CY	Grout Existing 24" Sewer Line		
		Dollars		
		Cents	\$	\$
13	1 LS	Repair Existing Sinkhole		
		Dollars		
		Cents	\$	\$
14	3 EA	Demolish Existing Manhole		
		Dollars		
		Cents	\$	\$
15	5 EA	Cut and Cap Existing Sewer		
		Dollars		
		Cents	\$	\$
16	60 LF	12"-18" Dump Rock Outlet, 24" Deep and 10' Wide		
		Dollars		
		Cents	\$	\$
17	90 TN	2" HMA Overlay including Roto Milling, Striping, Valve Adjustments		
		Dollars		
		Cents	\$	\$
18	435 LF	HMA DW / Road Repair		
		Dollars		
		Cents	\$	\$
19	85 LF	WVDOH Type "A" Trench Repair		
		Dollars		
		Cents	\$	\$
20	85 LF	Concrete Sidewalk Repair		
		Dollars		
		Cents	\$	\$

Bid Item	Quantity	Description with Unit Price Written In Words	Unit Price (In Figures)	Total Price (In Figures)
21	55 LF	12" HDPE DIPS DR-11 via Horizontal Directional Drill (Variable Grade)		
		Dollars		
		Cents	\$	\$
22	5 EA	Remove and Replace Existing 36" Drop Inlet (0'-6')		
		Dollars		
		Cents	\$	\$
23	3 EA	Install New 36" Drop Inlet (0'-6')		
		Dollars		
		Cents	\$	\$
24	2 EA	Install New 72" Storm Manhole (0'-6')		
		Dollars		
		Cents	\$	\$
25	3 EA	Remove and Replace Existing 48" Dia. Manhole w/ Frame & Cover (0'-6')		
		Dollars		
		Cents	\$	\$
26	3 EA	Install New Manhole 48" Dia. Manhole w/ Frame & Cover (0'-6')		
		Dollars		
		Cents	\$	\$
27	1 EA	Install New Manhole 48" Dia. Straddle Manhole w/ Frame & Cover (0'-6')		
		Dollars		
		Cents	\$	\$
28	24 VF	48" Diameter Manhole Riser		
		Dollars		
		Cents	\$	\$
29	2 VF	36" Drop Inlet Riser		
		Dollars		
		Cents	\$	\$

Bid Item	Quantity	Description with Unit Price Written In Words	Unit Price (In Figures)	Total Price (In Figures)
30	25 LF	Reclamation of Disturbed Areas		
		Dollars		
		Cents	\$	\$
31	5 EA	Test Pit		
		Dollars		
		Cents	\$	\$
32	1 Allowance	Relocation of Existing Utilities		
		Twenty-Five Thousand	Dollars	
		Zero	Cents	\$25,000
				\$25,000
33	1 LS	Construction Stakeout		
		Dollars		
		Cents		

TOTAL BASE BID – SHEETS 1-3: _____
 _____ (Words) (\$ _____ (Figures))
 _____ (Words)

(Bid Unit Price amounts are to be shown in both words and figures. In case of discrepancy, the Bid Unit Price shown in words will govern.)

BASE BID SCHEDULE – SHEETS 4 & 4A

NOTE: Bid Unit Price amounts are to be shown in both words and figures. In case of discrepancy, the Bid Unit Price shown in words will govern. Bids shall include sales tax and all other applicable taxes and fees.

Bid Item	Quantity	Description with Unit Price Written In Words	Unit Price (In Figures)	Total Price (In Figures)
34	60 LF	24" HDPE DR-13.5		
		Dollars		
		Cents	\$	\$

Bid Item	Quantity	Description with Unit Price Written In Words	Unit Price (In Figures)	Total Price (In Figures)
35	420 LF	24" HDPE DIPS DR-13.5 via Horizontal Directional Drill (Variable Grade)		
		Dollars		
		Cents	\$	\$
36	1 EA	Install New 72" Storm Manhole (0'-6')		
		Dollars		
		Cents	\$	\$
37	1 EA	Install New Straddle 72" Storm Manhole (0'-6')		
		Dollars		
		Cents	\$	\$
38	6 VF	72" Diameter Manhole Riser		
		Dollars		
		Cents	\$	\$
39	1 LS	Remove and Replace Existing Structure with Modified Type "G" Drop Inlet		
		Dollars		
		Cents	\$	\$
40	1 LS	Tie-in to Existing 24" RCP		
		Dollars		
		Cents	\$	\$
41	30 LF	18"-24" Dump Rock Outlet, 24" Deep and 10' Wide		
		Dollars		
		Cents	\$	\$
42	1 LS	Remove Existing Overland Piping		
		Dollars		
		Cents	\$	\$
43	2 EA	Concrete Pipe Anchor		
		Dollars		
		Cents	\$	\$

Bid Item	Quantity	Description with Unit Price Written In Words	Unit Price (In Figures)	Total Price (In Figures)
44	10 TN	2" HMA Overlay including Roto Milling, Striping, Valve Adjustments		
		Dollars		
		Cents	\$	\$
45	35 LF	HMA DW / Road Repair		
		Dollars		
		Cents	\$	\$

TOTAL BASE BID – SHEETS 4 & 4A: _____
 _____ (Words)
 _____ (\$ _____) (Figures)

(Bid Unit Price amounts are to be shown in both words and figures. In case of discrepancy, the Bid Unit Price shown in words will govern.)

TOTAL BASE BID – SHEETS 1-4A:

_____ (Words)
 _____ (\$ _____) (Figures)

(Bid Unit Price amounts are to be shown in both words and figures. In case of discrepancy, the Bid Unit Price shown in words will govern.)

DEDUCTIVE ALTERNATIVE #1 BID SCHEDULE – SHEETS 4 & 4A

NOTE: Bid Unit Price amounts are to be shown in both words and figures. In case of discrepancy, the Bid Unit Price shown in words will govern. Bids shall include sales tax and all other applicable taxes and fees.

Bid Item	Quantity	Description with Unit Price Written In Words	Unit Price (In Figures)	Total Price (In Figures)
34	60 LF	24" HDPE DR-13.5		
		Dollars		
		Cents	\$	\$

Bid Item	Quantity	Description with Unit Price Written In Words	Unit Price (In Figures)	Total Price (In Figures)
35	420 LF	24" HDPE DIPS DR-13.5 via Horizontal Directional Drill (Variable Grade)		
			Dollars	
			Cents	\$
36	1 EA	Install New 72" Storm Manhole (0'-6')		
			Dollars	
			Cents	\$
37	1 EA	Install New Straddle 72" Storm Manhole (0'-6')		
			Dollars	
			Cents	\$
38	6 VF	72" Diameter Manhole Riser		
			Dollars	
			Cents	\$
39	1 LS	Remove and Replace Existing Structure with Modified Type "G" Drop Inlet		
			Dollars	
			Cents	\$
40	1 LS	Tie-in to Existing 24" RCP		
			Dollars	
			Cents	\$
41	30 LF	18"-24" Dump Rock Outlet, 24" Deep and 10' Wide		
			Dollars	
			Cents	\$
42	1 LS	Remove Existing Overland Piping		
			Dollars	
			Cents	\$
43	2 EA	Concrete Pipe Anchor		
			Dollars	
			Cents	\$

Bid Item	Quantity	Description with Unit Price Written In Words	Unit Price (In Figures)	Total Price (In Figures)
44	10 TN	2" HMA Overlay including Roto Milling, Striping, Valve Adjustments		
			Dollars	
			Cents \$	\$
45	35 LF	HMA DW / Road Repair		
			Dollars	
			Cents \$	\$

TOTAL DEDUCTIVE ALTERNATIVE #1 BID: _____
 _____ (Words) _____ (Words)
 _____ (\$ _____) _____ (Figures)

(Bid Unit Price amounts are to be shown in both words and figures. In case of discrepancy, the Bid Unit Price shown in words will govern.)

ADDITIVE ALTERNATE #1 BID SCHEDULE – SHEETS 5 & 5A

NOTE: Bid Unit Price amounts are to be shown in both words and figures. In case of discrepancy, the Bid Unit Price shown in words will govern. Bids shall include sales tax and all other applicable taxes and fees.

Bid Item	Quantity	Description with Unit Price Written In Words	Unit Price (In Figures)	Total Price (In Figures)
1	360 LF	24" HDPE DR-13.5		
			Dollars	
			Cents \$	\$
2	150 LF	Overland 24" Coated Steel Pipe		
			Dollars	
			Cents \$	\$
3	25 LF	Underground 24" Coated Steel Pipe		
			Dollars	
			Cents \$	\$

Bid Item	Quantity	Description with Unit Price Written In Words	Unit Price (In Figures)	Total Price (In Figures)
4	45 LF	36" Steel Casing (Bore and Jack)		
		Dollars		
		Cents	\$	\$
5	4 EA	Install New 72" Storm Manhole (0'-6')		
		Dollars		
		Cents	\$	\$
6	4 VF	72" Diameter Manhole Riser		
		Dollars		
		Cents	\$	\$
7	1 LS	Remove and Replace Existing Structure with Modified Type "G" Drop Inlet		
		Dollars		
		Cents	\$	\$
8	1 LS	Tie-in to Existing 24" RCP		
		Dollars		
		Cents	\$	\$
9	20 LF	18"-24" Dump Rock Outlet, 24" Deep and 10' Wide		
		Dollars		
		Cents	\$	\$
10	1 LS	Remove Existing Overland Piping		
		Dollars		
		Cents	\$	\$
11	1 EA	Concrete Pipe Anchor		
		Dollars		
		Cents	\$	\$
12	30 TN	2" HMA Overlay including Roto Milling, Striping, Valve Adjustments		
		Dollars		
		Cents	\$	\$

Bid Item	Quantity	Description with Unit Price Written In Words	Unit Price (In Figures)	Total Price (In Figures)
13	155 LF	HMA DW / Road Repair		
			Dollars	
			Cents \$	\$
14	150 LF	Reclamation of Disturbed Areas		
			Dollars	
			Cents \$	\$

TOTAL ADDITIVE ALTERNATIVE #1 BID: _____
 _____ (Words)
 _____ (\$ _____) (Figures)

(Bid Unit Price amounts are to be shown in both words and figures. In case of discrepancy, the Bid Unit Price shown in words will govern.)

ADDITIVE ALTERNATE #2 BID SCHEDULE – SHEETS 6 & 6A

NOTE: Bid Unit Price amounts are to be shown in both words and figures. In case of discrepancy, the Bid Unit Price shown in words will govern. Bids shall include sales tax and all other applicable taxes and fees.

Bid Item	Quantity	Description with Unit Price Written In Words	Unit Price (In Figures)	Total Price (In Figures)
1	360 LF	24" HDPE DR-13.5		
			Dollars	
			Cents \$	\$
2	45 LF	36" Steel Casing (Bore and Jack)		
			Dollars	
			Cents \$	\$
3	4 EA	Install New 72" Storm Manhole (0'-6')		
			Dollars	
			Cents \$	\$

Bid Item	Quantity	Description with Unit Price Written In Words	Unit Price (In Figures)	Total Price (In Figures)
4	4 VF	72" Diameter Manhole Riser		
		Dollars		
		Cents	\$	\$
5	1 LS	Remove and Replace Existing Structure with Modified Type "G" Drop Inlet		
		Dollars		
		Cents	\$	\$
6	20 LF	18"-24" Dump Rock Outlet, 24" Deep and 10' Wide		
		Dollars		
		Cents	\$	\$
7	30 TN	2" HMA Overlay including Roto Milling, Striping, Valve Adjustments		
		Dollars		
		Cents	\$	\$
8	155 LF	HMA DW / Road Repair		
		Dollars		
		Cents	\$	\$
9	150 LF	Reclamation of Disturbed Areas		
		Dollars		
		Cents	\$	\$

TOTAL ADDITIVE ALTERNATIVE #2 BID: _____
 _____ (Words) _____ (\$ _____ (Figures))
 _____ (Words)

(Bid Unit Price amounts are to be shown in both words and figures. In case of discrepancy, the Bid Unit Price shown in words will govern.)

3.04 Method of Award

If at the time this contract is to be awarded, the lowest total bid (as described below) submitted by a qualified, responsive, responsible Bidder does not exceed the amount of funds then estimated by the Owner, as available to finance the contract, the construction contract will be awarded. If such bids exceed such amount, the Owner may reject all bids.

Each Bidder is required to provide a bid for each Alternate Bid. The Owner will award the contract on the Total Base Bid (Sheets 1-4A) amount to the lowest qualified, responsive, responsible Bidder. If the Total Base Bid amount exceeds available funds, the Owner may elect to award any or no alternates. Awarding of Alternates will not affect the apparent lowest Bidder. The Owner may elect to award any or all of the alternates in no particular order.

- A. Unit prices have been computed in accordance with paragraph 13.03.A of the General Conditions.
- B. Bidder acknowledges that estimated quantities are not guaranteed, and are solely for the purpose of comparison of Bids, and final payment for all Unit Price Bid items will be based on actual quantities, determined as provided in the Contract Documents.

~~ARTICLE 4 - BASIS OF BID - COST PLUS FEE~~

4.01 ~~The Contract Price will be the Cost of the Work, determined as provided in Paragraph 13.01 of the General Conditions, together with the following fee, and subject to the Guaranteed Maximum Price.~~

4.02 ~~Contractor's Fee~~

- ~~A. Contractor's fee will be [number] percent of the Cost of the Work. No fee will be payable on the basis of costs itemized as excluded in Paragraph 13.01.C of the General Conditions.~~
 - ~~1. The maximum amount payable by Owner as a percentage fee (Guaranteed Maximum Fee) will not exceed \$[insert cap amount], subject to increases or decreases for changes in the Work.~~
- ~~B. Contractor's fee will be determined by applying the following percentages to the various portions of the Cost of the Work as defined in Article 13 of the General Conditions. No fee will be payable on the basis of costs itemized as excluded in Paragraph 13.01.C of the General Conditions:~~

Costs	Percent
Payroll costs (See Paragraph 13.01.B.1, General Conditions)	
Materials and Installed Equipment cost (GC 13.01.B.2)	
Amounts to be paid to Subcontractors (GC 13.01.B.3)	
Amount to be paid to special consultants (GC 13.01.B.4)	
Other costs (GC 13.01.B.5)	

- ~~1. The maximum amount payable by Owner as a percentage fee (Guaranteed Maximum Fee) will not exceed \$[insert cap amount], subject to increases or decreases for changes in the Work.~~

~~C. Contractor's fee will be the fixed sum of \$[number].~~

4.03 ~~Guaranteed Maximum Price~~

- ~~A. The Guaranteed Maximum Price to Owner of the Cost of the Work including Contractor's Fee will not exceed \$[Bidder fill in GMP].~~

Deleted

ARTICLE 5—~~PRICE PLUS TIME BID~~

5.01 ~~Price Plus Time Contract Award (Stipulated Price Contract)~~

- ~~A. The Bidder to which an award of the Contract will be made will be determined in part on the basis of the Total Bid Price and the total number of calendar days to substantially complete the Work, in accordance with the following:~~

	Description		Amount
A	1. Total Bid Price		#{number}
	2. Total number of calendar days to substantially complete the Work	{number} days	
	3. Liquidated Damages Rate (from Agreement)	#{number}/day	
B	4. Adjustment Amount (2 x 3)		#{number}
A+B	5. Amount for Comparison of Bids		#{number}

- ~~B. The purpose of the process in the table above is only to calculate the lowest price plus time (A+B) bid amount for bid comparison purposes. The price for completion of the Work (the Contract Price) is the Total Bid Price.~~

- ~~C. Bonds required under Paragraph 6.01 of the General Conditions will be based on the Contract Price.~~

5.02 ~~Price Plus Time Contract Award (Cost Plus Fee with Guaranteed Maximum Price Contract)~~

- ~~A. The Bidder to which an award of Contract will be made will be determined in part on the basis of the Guaranteed Maximum Price and the total number of calendar days to substantially complete the Work, in accordance with the following:~~

	Description		Amount
A	1. Guaranteed Maximum Price		#{number}
	2. Total number of calendar days to substantially complete the Work	{number} days	
	3. Liquidated Damages Rate (from Agreement)	#{number}/day	
B	4. Adjustment Amount (2 x 3)		#{number}
A+B	5. Amount for Comparison of Bids		#{number}

- ~~B. The purpose of the process in the table above is only to calculate the lowest price plus time (A+B) bid amount for bid comparison purposes. The price for completion of the Work (the Contract Price) is based on the cost of the Work, plus a fee, subject to a guaranteed maximum price, as set forth in the Agreement.~~

- ~~C. Bonds required under Paragraph 6.01 of the General Conditions will be based on the Contract Price.~~

Deleted

ARTICLE 6—TIME OF COMPLETION

- 6.01 Bidder agrees that the Work will be substantially complete and will be completed and ready for final payment in accordance with Paragraph 15.06 of the General Conditions on or before the dates or within the number of calendar days indicated in the Agreement.
- 6.02 ~~Bidder agrees that the Work will be substantially complete on or before [Bidder inserts date], and will be completed and ready for final payment in accordance with Paragraph 15.06 of the General Conditions on or before [Bidder inserts date].~~

Deleted

- 6.03 ~~Bidder agrees that the Work will be substantially complete within [Bidder inserts number] calendar days after the date when the Contract Times commence to run as provided in Paragraph 4.01 of the General Conditions, and will be completed and ready for final payment in accordance with Paragraph 15.06 of the General Conditions within [Bidder inserts number] calendar days after the date when the Contract Times commence to run.~~

Deleted

- 6.04 Bidder accepts the provisions of the Agreement as to liquidated damages.

**ARTICLE 7—BIDDER'S ACKNOWLEDGEMENTS: ACCEPTANCE PERIOD, INSTRUCTIONS,
AND RECEIPT OF ADDENDA**

7.01 *Bid Acceptance Period*

- A. This Bid will remain subject to acceptance for 90 days after the Bid opening, or for such longer period of time that Bidder may agree to in writing upon request of Owner.

7.02 *Instructions to Bidders*

- A. Bidder accepts all of the terms and conditions of the Instructions to Bidders, including without limitation those dealing with the disposition of Bid security.

7.03 *Receipt of Addenda*

- A. Bidder hereby acknowledges receipt of the following Addenda:

Addendum Number	Addendum Date

ARTICLE 8—BIDDER'S REPRESENTATIONS AND CERTIFICATIONS

8.01 *Bidder's Representations*

- A. In submitting this Bid, Bidder represents the following:
1. Bidder has examined and carefully studied the Bidding Documents, including Addenda.
 2. Bidder has visited the Site, conducted a thorough visual examination of the Site and adjacent areas, and become familiar with the general, local, and Site conditions that may affect cost, progress, and performance of the Work.
 3. Bidder is familiar with all Laws and Regulations that may affect cost, progress, and performance of the Work.
 4. Bidder has carefully studied the reports of explorations and tests of subsurface conditions at or adjacent to the Site and the drawings of physical conditions relating to existing surface or subsurface structures at the Site that have been identified in the Supplementary Conditions, with respect to the Technical Data in such reports and drawings.
 5. Bidder has carefully studied the reports and drawings relating to Hazardous Environmental Conditions, if any, at or adjacent to the Site that have been identified in the Supplementary Conditions, with respect to Technical Data in such reports and drawings.
 6. Bidder has considered the information known to Bidder itself; information commonly known to contractors doing business in the locality of the Site; information and observations obtained from visits to the Site; the Bidding Documents; and the Technical Data identified in the Supplementary Conditions or by definition, with respect to the effect of such information,

EJCDC® C-410, Bid Form for Construction Contract.

Copyright© 2018 National Society of Professional Engineers, American Council of Engineering Companies,
and American Society of Civil Engineers. All rights reserved.

observations, and Technical Data on (a) the cost, progress, and performance of the Work; (b) the means, methods, techniques, sequences, and procedures of construction to be employed by Bidder, if selected as Contractor; and (c) Bidder's (Contractor's) safety precautions and programs.

7. Based on the information and observations referred to in the preceding paragraph, Bidder agrees that no further examinations, investigations, explorations, tests, studies, or data are necessary for the performance of the Work at the Contract Price, within the Contract Times, and in accordance with the other terms and conditions of the Contract.
8. Bidder is aware of the general nature of work to be performed by Owner and others at the Site that relates to the Work as indicated in the Bidding Documents.
9. Bidder has given Engineer written notice of all conflicts, errors, ambiguities, or discrepancies that Bidder has discovered in the Bidding Documents, and of discrepancies between Site conditions and the Contract Documents, and the written resolution thereof by Engineer is acceptable to Contractor.
10. The Bidding Documents are generally sufficient to indicate and convey understanding of all terms and conditions for performance and furnishing of the Work.
11. The submission of this Bid constitutes an incontrovertible representation by Bidder that without exception the Bid and all prices in the Bid are premised upon performing and furnishing the Work required by the Bidding Documents.

8.02 *Bidder's Certifications*

A. The Bidder certifies the following:

1. This Bid is genuine and not made in the interest of or on behalf of any undisclosed individual or entity and is not submitted in conformity with any collusive agreement or rules of any group, association, organization, or corporation.
2. Bidder has not directly or indirectly induced or solicited any other Bidder to submit a false or sham Bid.
3. Bidder has not solicited or induced any individual or entity to refrain from bidding.
4. Bidder has not engaged in corrupt, fraudulent, collusive, or coercive practices in competing for the Contract. For the purposes of this Paragraph 8.02.A:
 - a. Corrupt practice means the offering, giving, receiving, or soliciting of anything of value likely to influence the action of a public official in the bidding process.
 - b. Fraudulent practice means an intentional misrepresentation of facts made (a) to influence the bidding process to the detriment of Owner, (b) to establish bid prices at artificial non-competitive levels, or (c) to deprive Owner of the benefits of free and open competition.
 - c. Collusive practice means a scheme or arrangement between two or more Bidders, with or without the knowledge of Owner, a purpose of which is to establish bid prices at artificial, non-competitive levels.
 - d. Coercive practice means harming or threatening to harm, directly or indirectly, persons or their property to influence their participation in the bidding process or affect the execution of the Contract.

BIDDER hereby submits this Bid as set forth above:

Bidder:

(typed or printed name of organization)

By:

(individual's signature)

Name:

(typed or printed)

Title:

(typed or printed)

Date:

(typed or printed)

If Bidder is a corporation, a partnership, or a joint venture, attach evidence of authority to sign.

Attest:

(individual's signature)

Name:

(typed or printed)

Title:

(typed or printed)

Date:

(typed or printed)

Address for giving notices:

Bidder's Contact:

Name:

(typed or printed)

Title:

(typed or printed)

Phone:

Email:

Address:

Bidder's Contractor License No.: (if applicable)

LAYOUT TAB: index
CADD FILE: R:\020\120-11053\00-Milford Area Upgrades-City Of Clarksburg Sanitary Board-Drawing\PLAN SET\000-INDEX.dwg
PLOT DATE/TIME: 5/10/2023 12:13 PM

**WEST VIRGINIA DIVISION
OF HIGHWAYS
DISTRICT FOUR**
2460 MURPHYS RUN RD
BRIDGEPORT, WV 26330
(304) 842-1500
WATER
CLARKSBURG WATER BOARD
1001 S CHESTNUT ST
CLARKSBURG, WV 26301
(304) 623-3711
SEWER:
CLARKSBURG PUBLIC WORKS
902 N 3RD ST
CLARKSBURG, WV 26301
(304) 624-1611

**UTILITY AGENCIES
SERVING PROJECT AREA**

ELECTRIC
FIRST ENERGY
1-888-544-4877

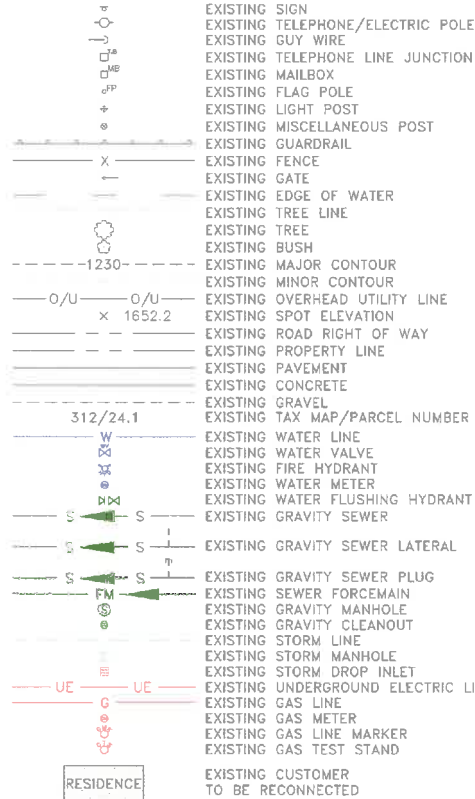
GAS
HOPE GAS
1-800-934-3187

CABLE
SPECTRUM
1-844-476-9751

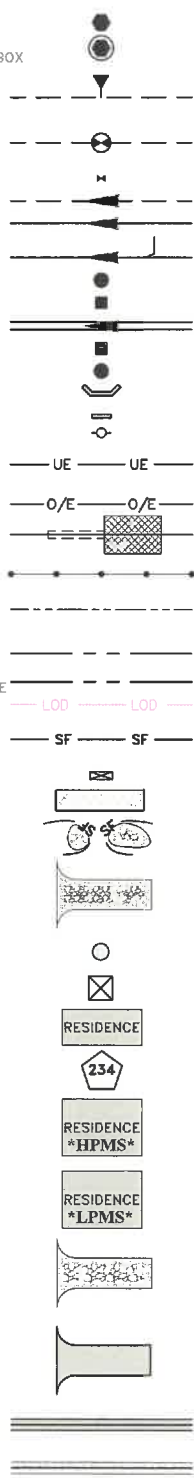
RESPONSE TEAMS:
NATIONAL RESPONSE CENTER
FOR REPORTING
CHEMICAL OR OIL SPILLS
1-800-424-8802
STATE EMERGENCY
SPILL NOTIFICATION
1-800-642-3074
AMBULANCE, FIRE, LAW
ENFORCEMENT
911

WV 811
1-800-245-4848

EXISTING FEATURES



LEGEND




PROPOSED FEATURES

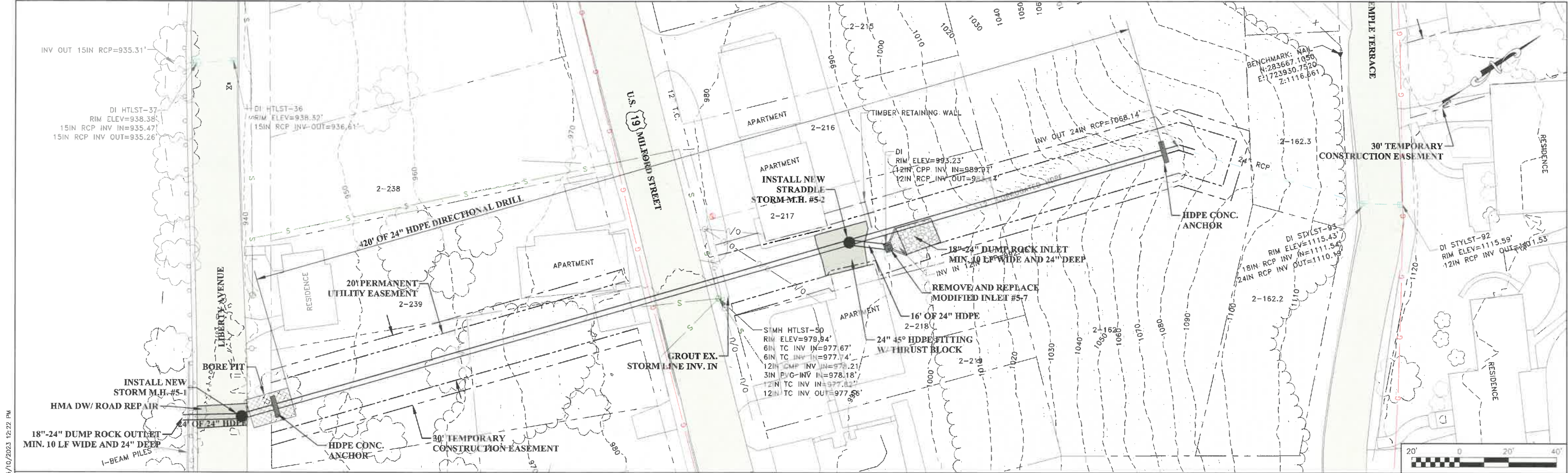
DRAWING INDEX

COVER)	COVER SHEET
SHEET #1)	MAIN INDEX SHEET
SHEET #PN)	PROJECT AND WVDOH GENERAL NOTES
SHEET #ROW)	RIGHT OF WAY LIST
SHEET #SL)	SHEET LAYOUT
SHEET #1)	PLAN AND PROFILE SHEET
SHEET #1A)	PROFILE SHEET
SHEET #2)	SHEET #1 RESTORATION AND DEMO PLAN
SHEET #3)	SHEET #1 EASEMENT AND INGRESS/ EGRESS PLAN
SHEET #4)	PLAN AND PROFILE SHEET
SHEET #4A)	PROFILE SHEET
SHEET #5)	PLAN AND PROFILE SHEET
SHEET #5A)	PROFILE SHEET
SHEET #6)	PLAN AND PROFILE SHEET
SHEET #6A)	PROFILE SHEET
SHEET #D1)	TYPICAL SEWER DETAILS
SHEET #D2)	TYPICAL SEWER DETAILS
SHEET #D3)	TYPICAL SEWER DETAILS
SHEET #D4)	TYPICAL SEWER DETAILS
SHEET #D5)	TYPICAL SEWER DETAILS
SHEET #D6)	TYPICAL SEWER DETAILS
SHEET #ES1)	EROSION AND SEDIMENT CONTROL DETAILS
SHEET #ES2)	EROSION AND SEDIMENT CONTROL DETAILS
SHEET #ES3)	EROSION AND SEDIMENT CONTROL DETAILS
SHEET #ES4)	EROSION AND SEDIMENT CONTROL DETAILS
SHEET #ES5)	EROSION AND SEDIMENT CONTROL DETAILS
SHEET #ES6)	EROSION AND SEDIMENT CONTROL DETAILS
SHEET #ES7)	EROSION AND SEDIMENT CONTROL DETAILS
SHEET #ES8)	EROSION AND SEDIMENT CONTROL DETAILS
BACK)	BACK SHEET



DANIEL E. FERRELL , WV P.E. #13462

THE INFORMATION CONTAINED HEREIN IS THE SOLE PROPERTY OF THE THRASHER GROUP, INC. REPRODUCTION OF THESE DOCUMENTS IN WHOLE OR IN PART, FOR ANY REASON WITHOUT PRIOR WRITTEN PERMISSION, IS STRICTLY PROHIBITED.				1	AS	5/10/23	ADDENDUM #2			SCALE: AS SHOWN	 <div>THE THRASHER GROUP INC. CIVIL • ENVIRONMENTAL • CONSULTING • FIELD SERVICES 600 WHITE OAKS BOULEVARD, BRIDGEPORT, WV 26330 PHONE (304) 624-4108 • FAX (304) 624-7831</div>	PHASE No.		CLARKSBURG SANITARY BOARD MILFORD AREA UPGRADES PROJECT HARRISON COUNTY, WEST VIRGINIA MAIN INDEX SHEET	SHEET No.
									DRAWN: A.SAYRE	DATE: 1/2023		CONTRACT No.			
									CHECKED: A.URGO	DATE:		PROJECT No.			
									APPROVED: D.FERRELL	DATE:		T20-11053			
									SURVEY DATE:						
									SURVEY BY:						
	NO.	BY	DATE	DESCRIPTION				FIELD BOOK No.:							



LAYOUT TAB: 4
PLOT DATE/TIME: 5/10/2023 12:22 PM
CAD FILE: R:\020\T20-11053.00-Milford Area Upgrades-City Of Clarksburg Sanitary Board-Drawing\PLAN SET\000-SHT-04 ALT 1.dwg

THE INFORMATION CONTAINED HEREIN IS THE SOLE PROPERTY OF THE THRASHER GROUP, INC. REPRODUCTION OF THESE DOCUMENTS IN WHOLE OR IN PART, FOR ANY REASON WITHOUT PRIOR WRITTEN PERMISSION, IS STRICTLY PROHIBITED.

NO. BY DATE DESCRIPTION

1	AS	4/26/23	ADDENDUM #2

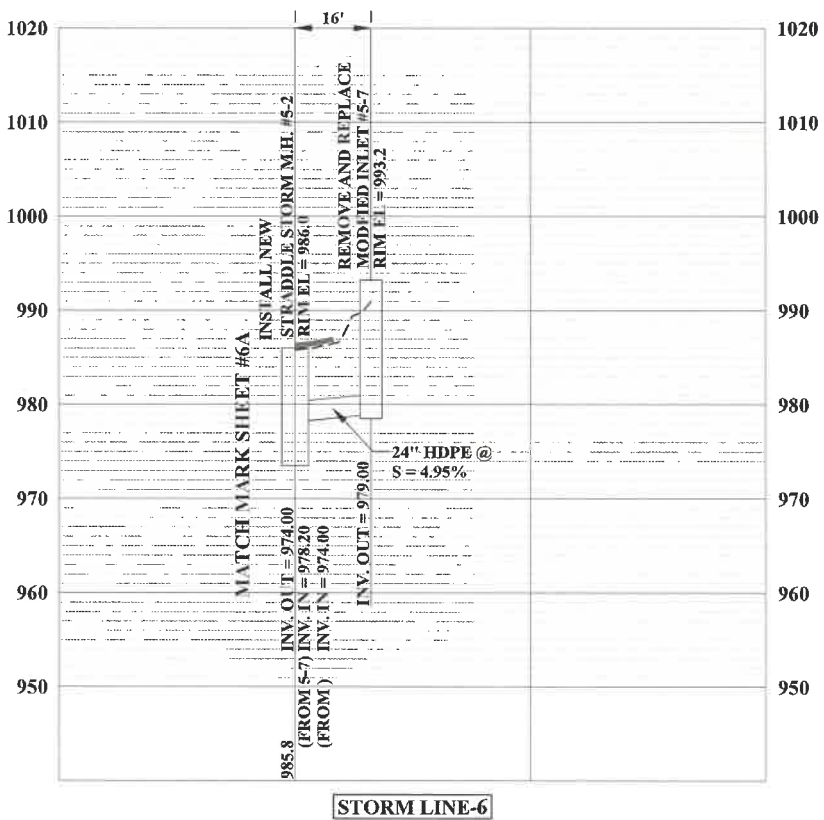
SCALE: AS SHOWN	DATE: 1/2023
DRAWN: A.SAYRE	CHECKED: A.URGO
APPROVED: D.FERRELL	SURVEY DATE:
SURVEY BY:	FIELD BOOK No.:

THRASHER
THE THRASHER GROUP, INC.
CIVIL • ENVIRONMENTAL • CONSULTING • FIELD SERVICES
600 WHITE OAKS BOULEVARD, BRIDGEPORT, WV 26330
PHONE (304) 624-4108 • FAX (304) 624-7831

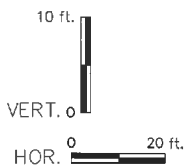
PHASE No.
CONTRACT No.
PROJECT No.
T20-11053

CLARKSBURG SANITARY BOARD
MILFORD AREA
UPGRADES PROJECT
HARRISON COUNTY, WEST VIRGINIA
PLAN AND PROFILE SHEET

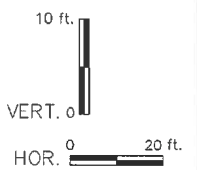
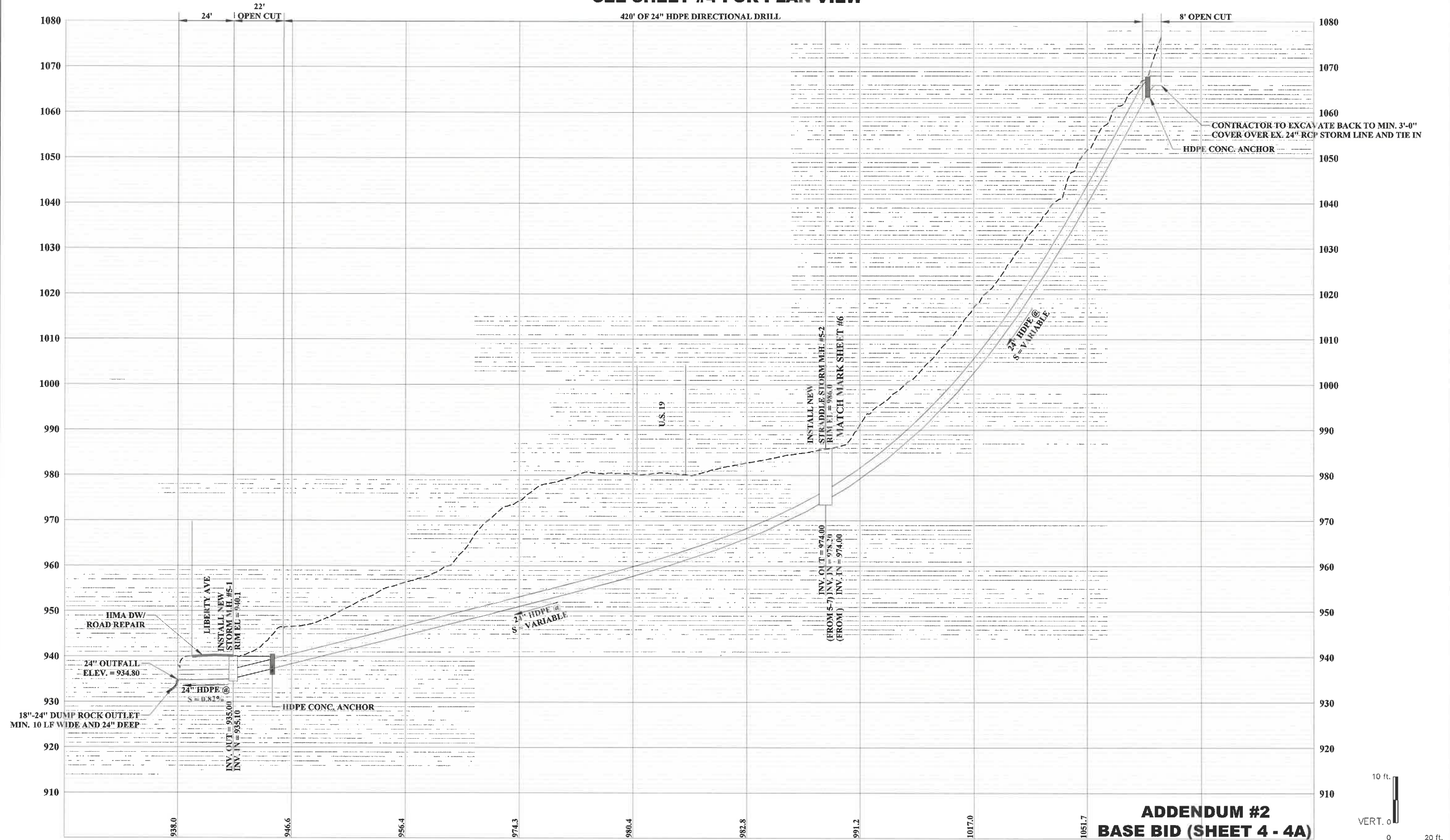
SHEET No.
4



**ADDENDUM #2
BASE BID (SHEET 4 - 4A)
DEDUCTIVE ALTERNATIVE #1**



SEE SHEET #4 FOR PLAN VIEW



STORM LINE-5

ADDENDUM #2
BASE BID (SHEET 4 - 4A)
DEDUCTIVE ALTERNATIVE #1

THE INFORMATION CONTAINED HEREIN IS THE
SOLE PROPERTY OF THE THRASHER GROUP,
INC. REPRODUCTION OF THESE DOCUMENTS
IN WHOLE OR IN PART, FOR ANY REASON
WITHOUT PRIOR WRITTEN PERMISSION, IS
STRICTLY PROHIBITED.

1	AS	4/26/23	ADDENDUM #2
NO.	BY	DATE	DESCRIPTION

SCALE: AS SHOWN	
DRAWN: A.SAYRE	DATE: 1/2023
CHECKED: A.URGO	DATE:
APPROVED: J.FERRELL	DATE:
SURVEY DATE:	
SURVEY BY:	
FIELD BOOK No.:	

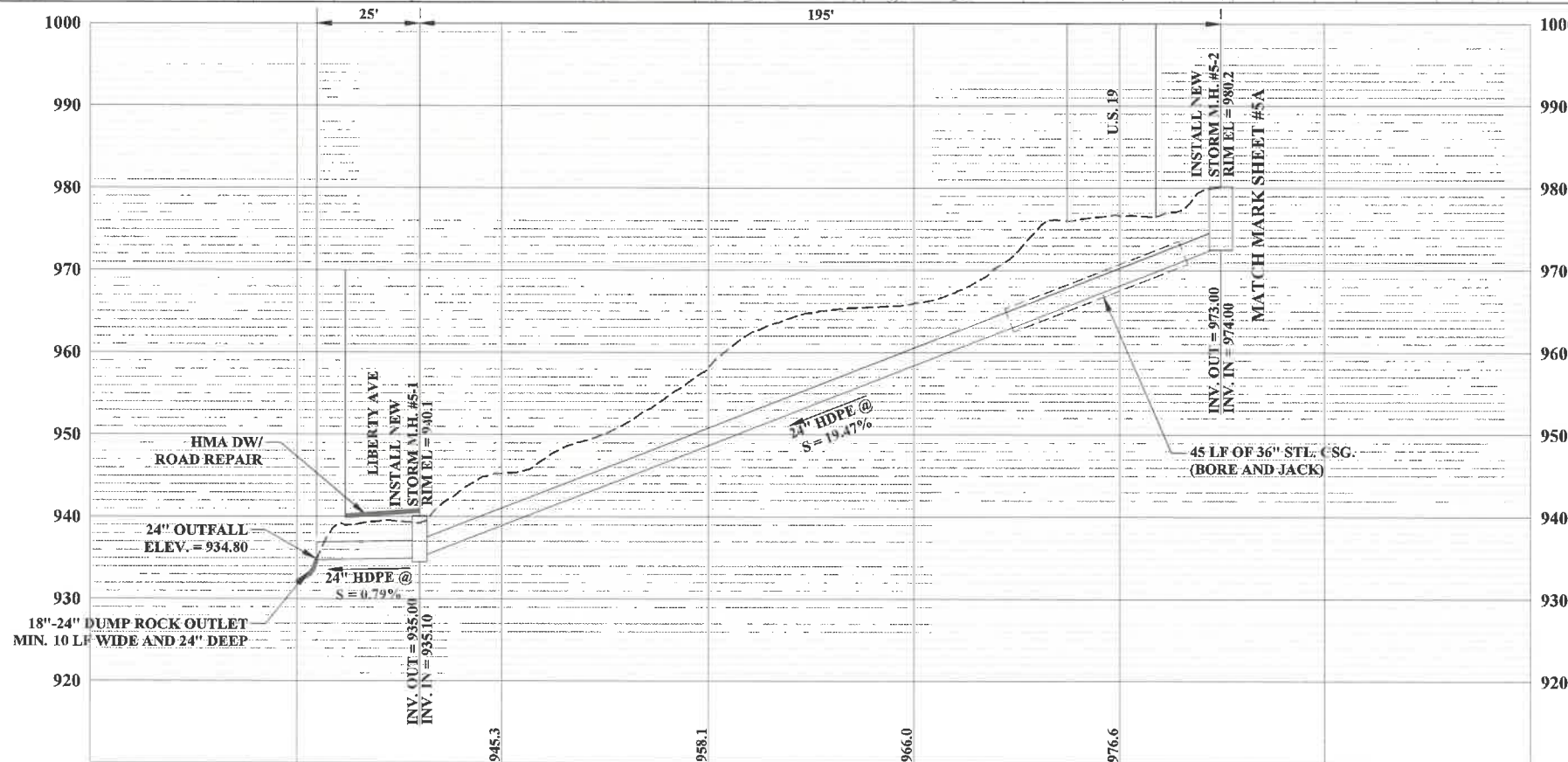
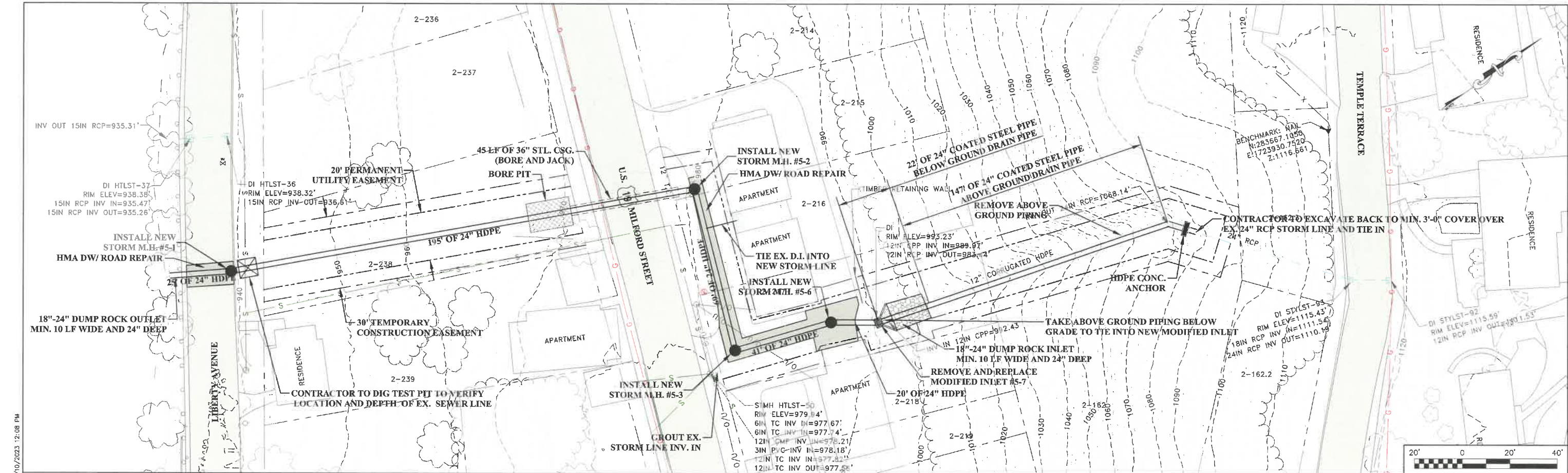
THRASHER
THE THRASHER GROUP INC.
CIVIL • ENVIRONMENTAL • CONSULTING • FIELD SERVICES
600 WHITE OAKS BOULEVARD, BRIDGEPORT, WV 26330
PHONE (304) 624-4108 • FAX (304) 624-7831

PHASE No.
CONTRACT No.
PROJECT No.
T20-11053

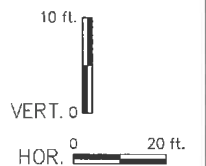
CLARKSBURG SANITARY BOARD
MILFORD AREA
UPGRADES PROJECT
HARRISON COUNTY, WEST VIRGINIA
PROFILE SHEET

SHEET No.
4A

LAYOUT TAB: 4A
CAD FILE: R:\2020\T20-11053\00-Milford Area Upgrades-City Of Clarksburg Sanitary Board-Drawing\PLAN SET\000-SHT-04 ALT 1.dwg
PLOT DATE/TIME: 5/10/2023 3:22 PM



ADDENDUM #2
ADDITIVE ALTERNATIVE #1



LAYOUT TAB: 5
CAD FILE: R:\020\120-11053.00-Milford Area Upgrades-City Of Clarksburg Sanitary Board-Drawing\PLAN SET\000-S&T-05 ALT 2.dwg
PLOT DATE/TIME: 5/10/2023 12:08 PM

THE INFORMATION CONTAINED HEREIN IS THE SOLE PROPERTY OF THE THRASHER GROUP, INC. REPRODUCTION OF THESE DOCUMENTS IN WHOLE OR IN PART, FOR ANY REASON WITHOUT PRIOR WRITTEN PERMISSION, IS STRICTLY PROHIBITED.

NO.	BY	DATE	DESCRIPTION
1	AS	4/26/23	ADDENDUM #2

SCALE: AS SHOWN	PHASE No.
DRAWN: A.SAYRE	CONTRACT No.
CHECKED: A.JURGO	PROJECT No.
APPROVED: D.FERRELL	
SURVEY DATE:	
SURVEY BY:	
FIELD BOOK No.:	

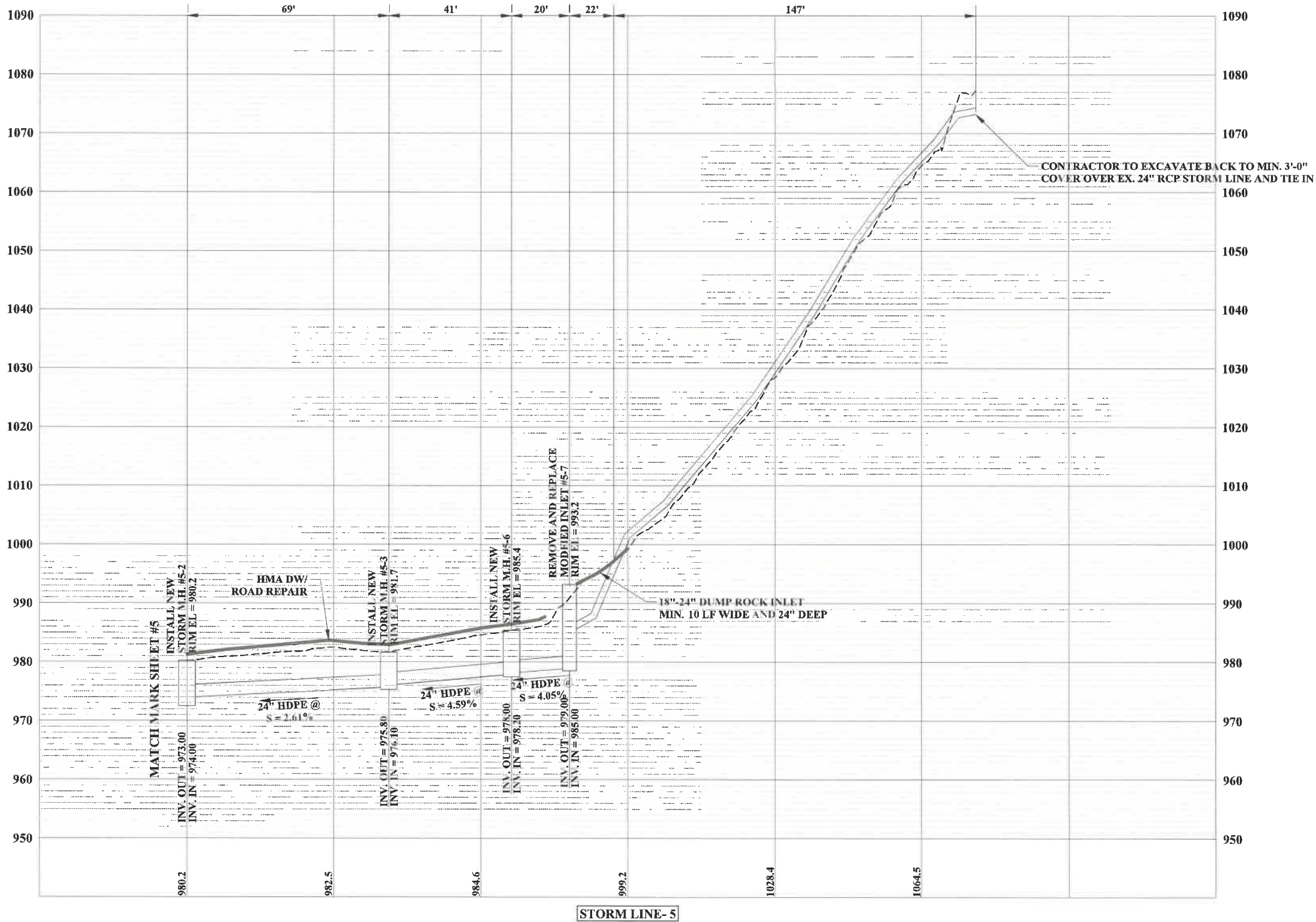
THRASHER
THE THRASHER GROUP, INC.
CIVIL • ENVIRONMENTAL • CONSULTING • FIELD SERVICES
600 WHITE OAKS BOULEVARD, BRIDGEPORT, WV 26330
PHONE (304) 624-4108 • FAX (304) 624-7831

PHASE No.
CONTRACT No.
PROJECT No.
T20-11053

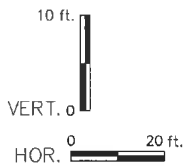
CLARKSBURG SANITARY BOARD
MILFORD AREA
UPGRADES PROJECT
HARRISON COUNTY, WEST VIRGINIA
PLAN AND PROFILE SHEET

SHEET No.
5

SEE SHEET #5 FOR PLAN VIEW



ADDENDUM #2
ADDITIVE ALTERNATIVE #1



LAYOUT TAB: 5A
CAD FILE: R:\020\T20-11053.00-Milford Area Upgrades-City Of Clarksburg Sanitary Board-Drawing\PLAN SET\000-SHT-05 ALT 2.dwg
PLOT DATE/TIME: 5/10/2023 12:08 PM

THE INFORMATION CONTAINED HEREIN IS THE SOLE PROPERTY OF THE THRASHER GROUP, INC. REPRODUCTION OF THESE DOCUMENTS IN WHOLE OR IN PART, FOR ANY REASON WITHOUT PRIOR WRITTEN PERMISSION, IS STRICTLY PROHIBITED.

NO.	BY	DATE	DESCRIPTION
1	AS	4/26/23	ADDENDUM #2

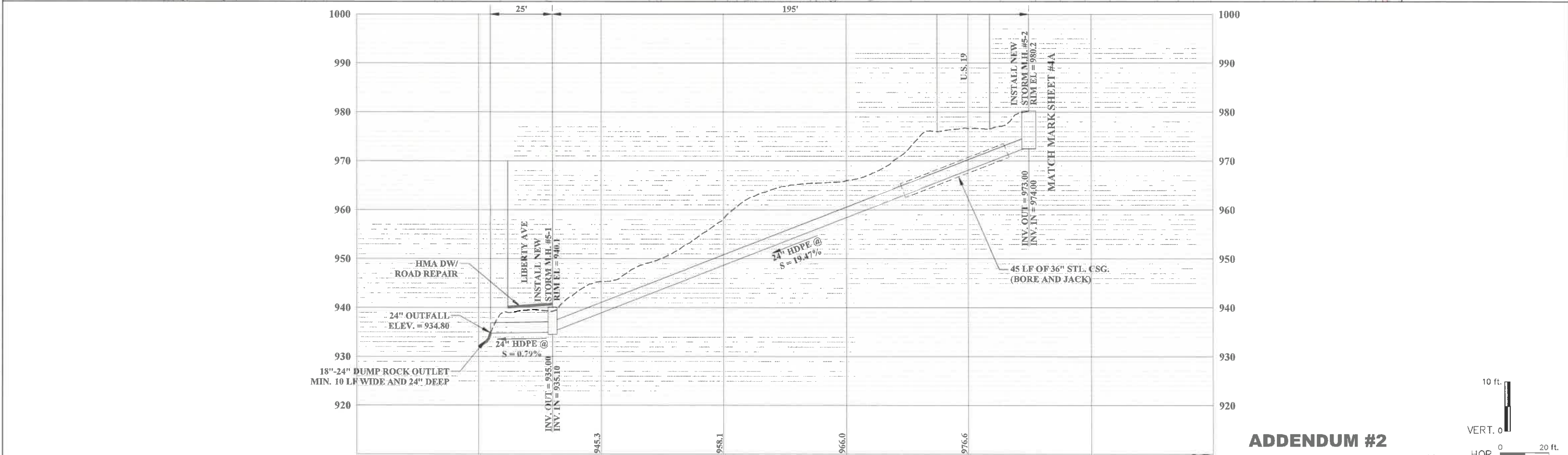
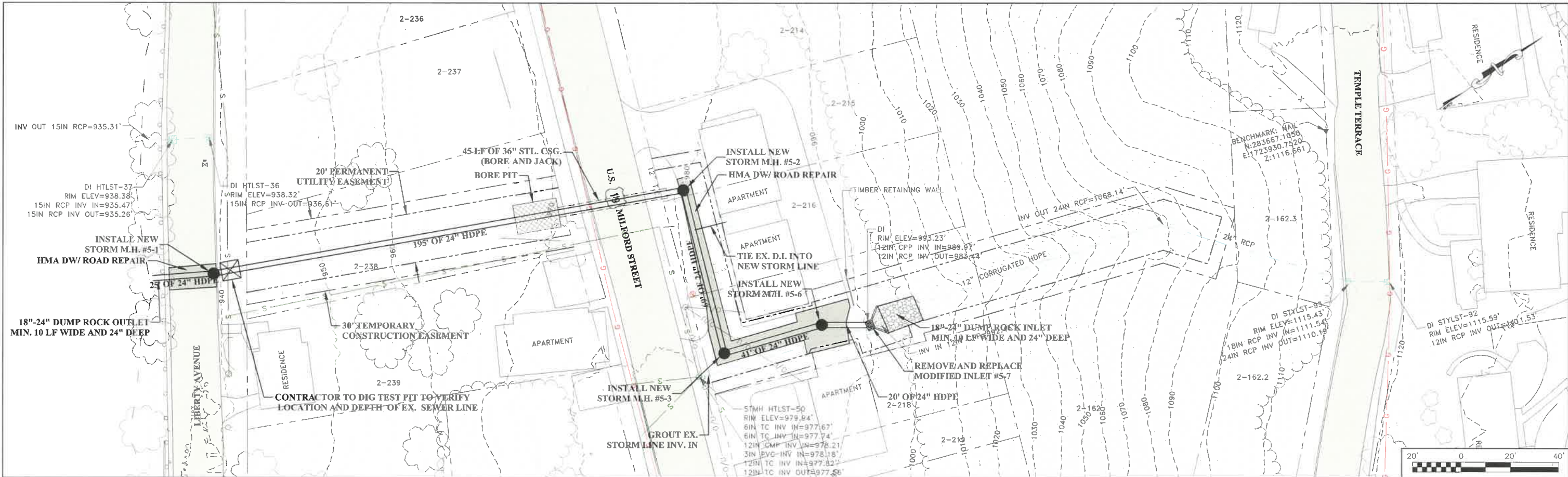
SCALE: AS SHOWN	DATE: 1/2023
DRAWN: A.SAYRE	CHECKED: A.URGO
APPROVED: D.FERRELL	SURVEY DATE:
SURVEY BY:	FIELD BOOK No.:

THRASHER
THE THRASHER GROUP INC.
CIVIL • ENVIRONMENTAL • CONSULTING • FIELD SERVICES
600 WHITE OAKS BOULEVARD, BRIDGEPORT, WV 26330
PHONE (304) 624-4108 • FAX (304) 624-7831

PHASE No.
CONTRACT No.
PROJECT No.
T20-11053

CLARKSBURG SANITARY BOARD
MILFORD AREA
UPGRADES PROJECT
HARRISON COUNTY, WEST VIRGINIA
PROFILE SHEET

SHEET No.
5A



1

AS

4/26/23

ADDENDUM #2

NO.

BY

DATE

DESCRIPTION

SCALE: AS SHOWN

DRAWN: A.SAYRE DATE: 1/2023

CHECKED: A.URGO DATE:

APPROVED: D.FERRELL DATE:

SURVEY DATE:

SURVEY BY:

FIELD BOOK No.:

THRASHER

THE THRASHER GROUP, INC.

CIVIL • ENVIRONMENTAL • CONSULTING • FIELD SERVICES

600 WHITE OAKS BOULEVARD, BRIDGEPORT, WV 26330

PHONE (304) 624-4108 • FAX (304) 624-7831

PHASE No.

CONTRACT No.

PROJECT No.

T20-11053

CLARKSBURG SANITARY BOARD

MILFORD AREA

UPGRADES PROJECT

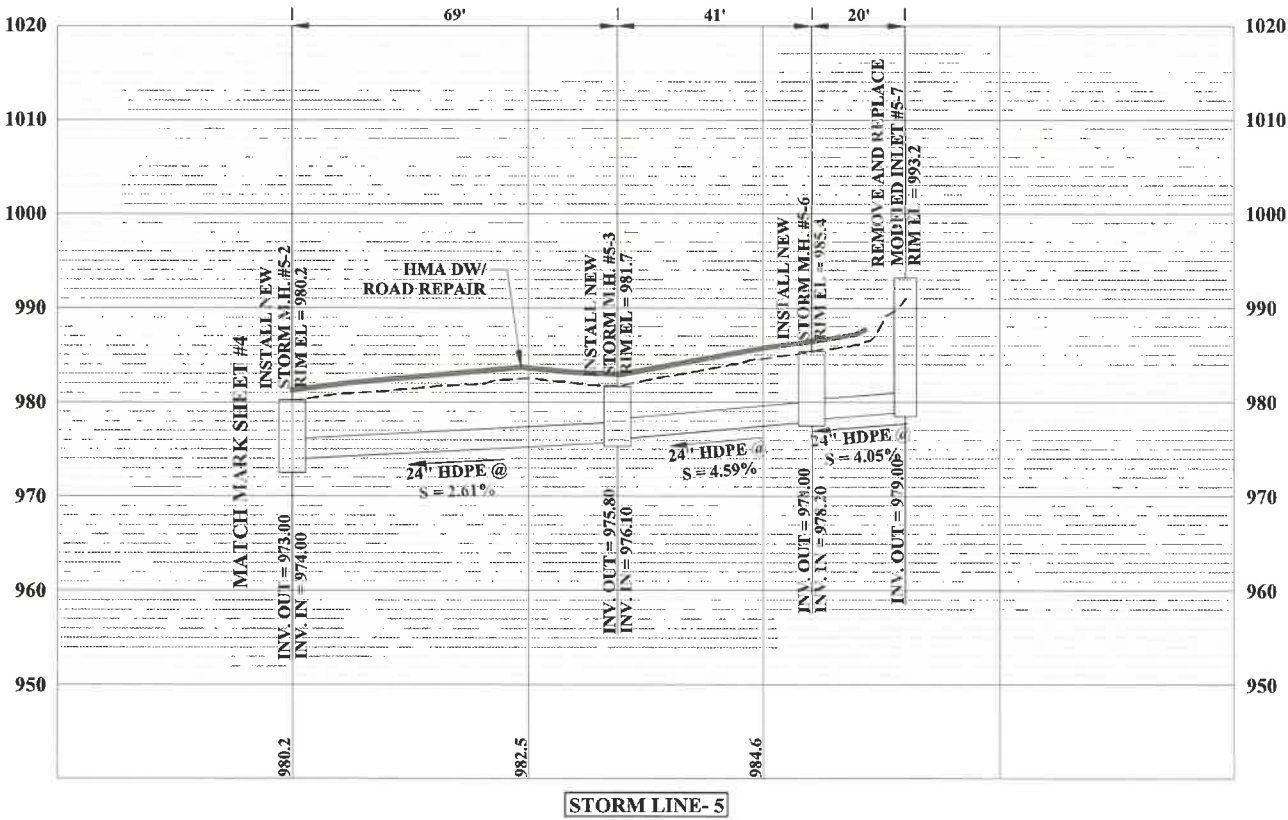
HARRISON COUNTY, WEST VIRGINIA

PLAN AND PROFILE SHEET

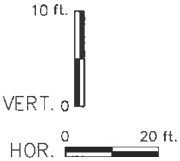
SHEET No.

6

SEE SHEET #6 FOR PLAN VIEW



**ADDENDUM #2
ADDITIVE ALTERNATIVE #2**



LAYOUT TAB: 6A
CAD FILE: R:\020\T20-11053\00-Milford Area Upgrades-City Of Corksburg Sanitary Board-Drawings\PLAN SET\000-SHT-06 ALT 3.dwg
PLOT DATE/TIME: 5/10/2023 3:23 PM

THE INFORMATION CONTAINED HEREIN IS THE SOLE PROPERTY OF THE THRASHER GROUP, INC. REPRODUCTION OF THESE DOCUMENTS IN WHOLE OR IN PART, FOR ANY REASON WITHOUT PRIOR WRITTEN PERMISSION, IS STRICTLY PROHIBITED.				
1	AS	4/26/23	ADDENDUM #2	
NO.	BY	DATE	DESCRIPTION	

SCALE: AS SHOWN	
DRAWN: A.SAYRE	DATE: 1/2023
CHECKED: A.URGO	DATE:
APPROVED: D.FERRELL	DATE:
SURVEY DATE:	
SURVEY BY:	
FIELD BOOK No.:	

THRASHER
THE THRASHER GROUP INC.
CIVIL • ENVIRONMENTAL • CONSULTING • FIELD SERVICES
600 WHITE OAKS BOULEVARD, BRIDGEPORT, WV 26330
PHONE (304) 624-4108 • FAX (304) 624-7831

PHASE No.
CONTRACT No.
PROJECT No.
T20-11053

CLARKSBURG SANITARY BOARD
MILFORD AREA
UPGRADES PROJECT
HARRISON COUNTY, WEST VIRGINIA
PROFILE SHEET

SHEET No.
6A