

**VILLAGE OF BALTIC  
TUSCARAWAS COUNTY, OHIO**

**MAPLE STREET WATER LINE IMPROVEMENTS**

**ADDENDUM #1**

**FEBRUARY 6, 2023**

**THRASHER PROJECT #101-010-10146**

TO WHOM IT MAY CONCERN:

The following is a modification and response to a question posed by contractors for the above-referenced project.

**A. GENERAL - None**

**B. SPECIFICATIONS - None**

**C. DRAWINGS**

1. **REPLACE** Sheet 8 included in this Addendum: Trench detail has been modified to reflect a narrower trench cut and the use of 6-inch of Asphalt Concrete Base (Item 301) instead of Asphalt Concrete Surface Course Type 1 and Type 2 (Item 448).

**D. QUESTIONS AND RESPONSES**

**QUESTION 1:**

Is the proposed water line located within the edges of pavement?

**RESPONSE:**

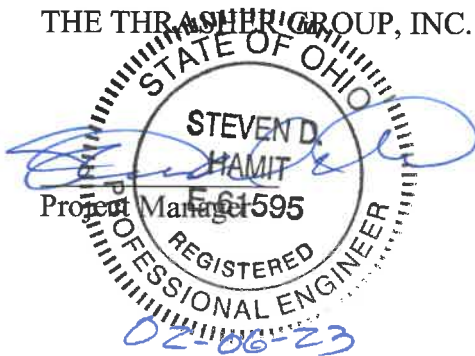
The water line is located within the edges of pavement and will require removal and replacement of asphalt as shown in the Trench Detail on Sheet 8.

**E. CLARIFICATIONS - None**

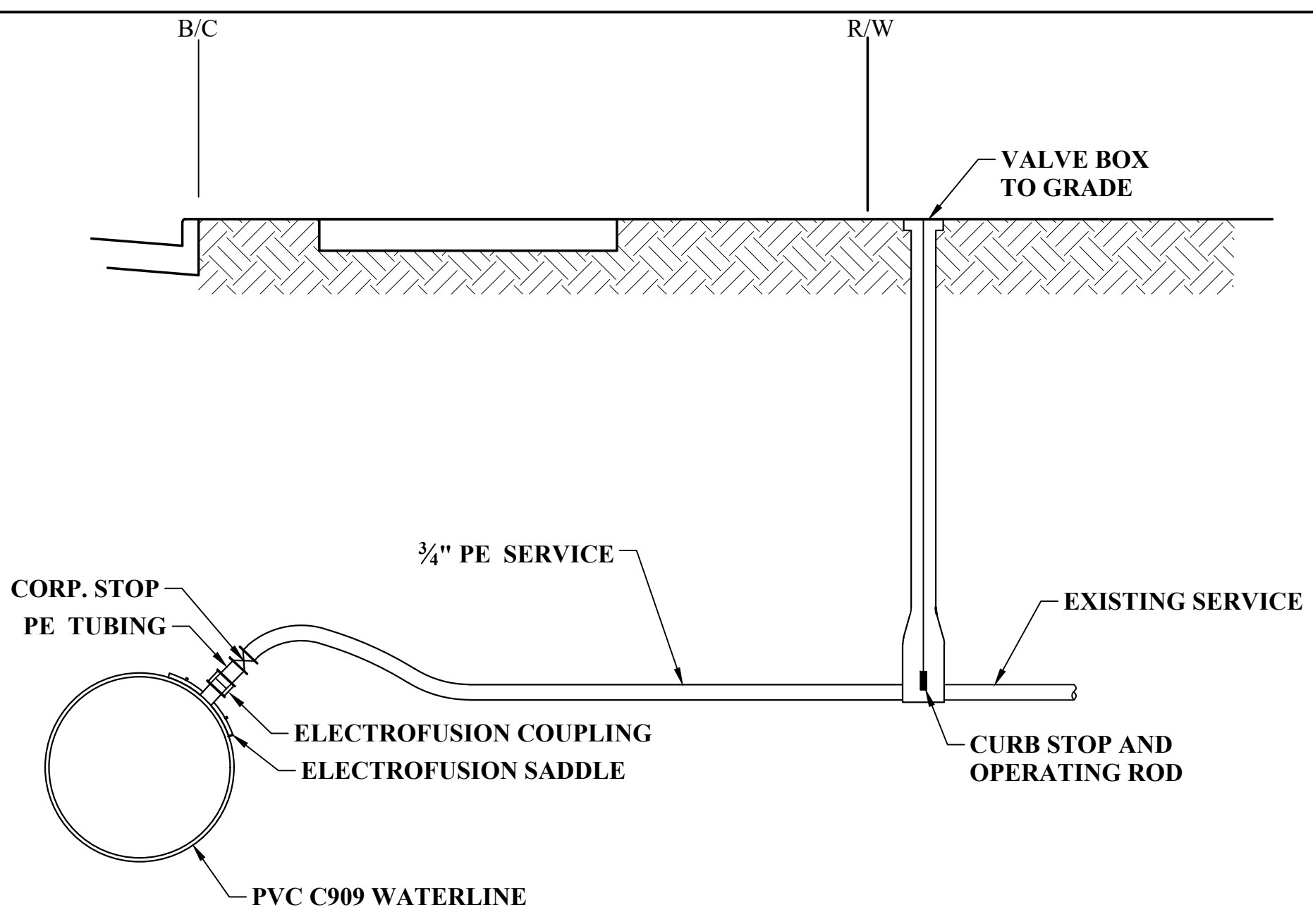
If you have any questions or comments, please feel free to contact me at your earliest convenience. As a reminder, bids will be received until 10:30 a.m. on February 9, 2023, at Village of Baltic, 102 W. Main Street, Baltic, OH 43804. Good luck to everyone and thank you for your interest in the project.

Sincerely,

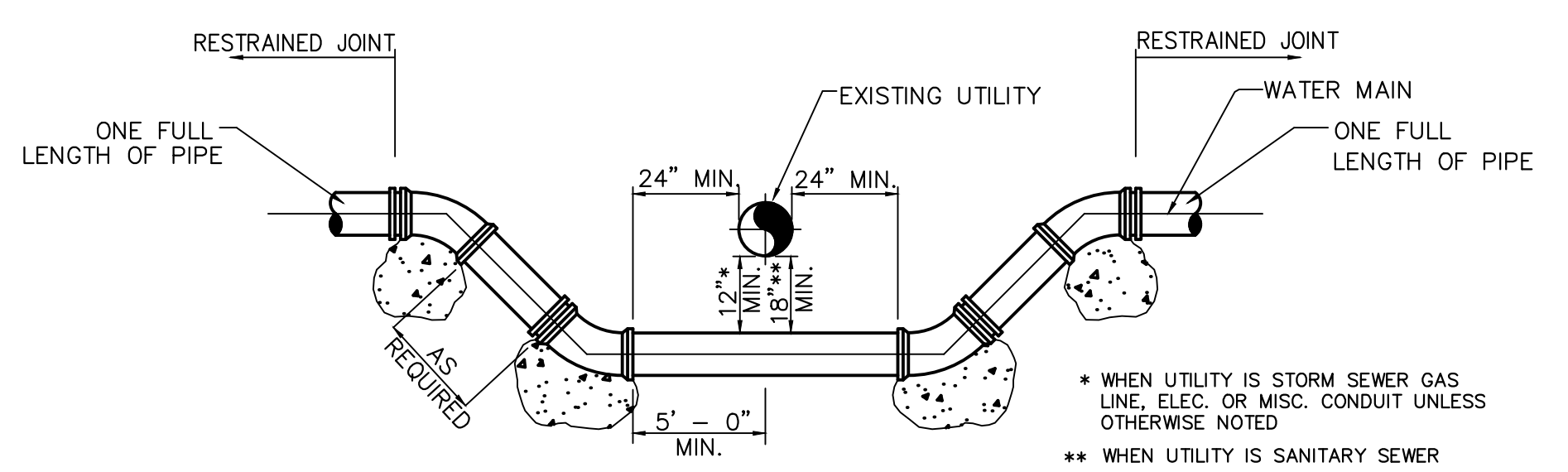
THE THRASHER GROUP, INC.



USER: scott.m. daban  
 LAYOUT: 8 DETAILS - TYPICAL WATER LINE  
 PLOT DATE/TIME: 2/13/2023 2:58 PM  
 CAD FILE: R:\010\010-10146\00-Maple Street Water Line Replacement-Village Of Baltic-Drawing\8 DETAILS - TYPICAL WATER LINE.dwg



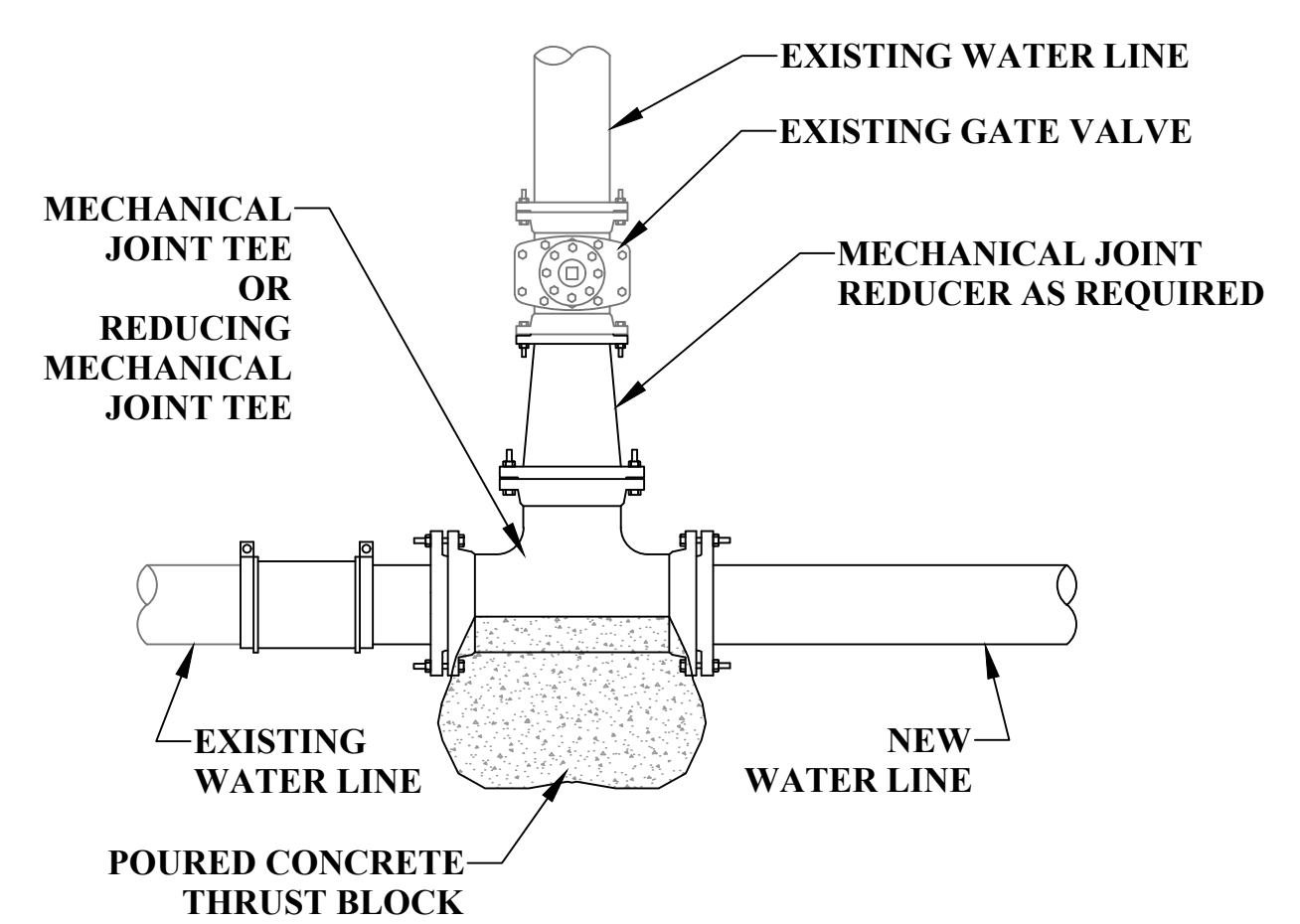
**WATER SERVICE CONNECTION DETAIL**  
NOT TO SCALE



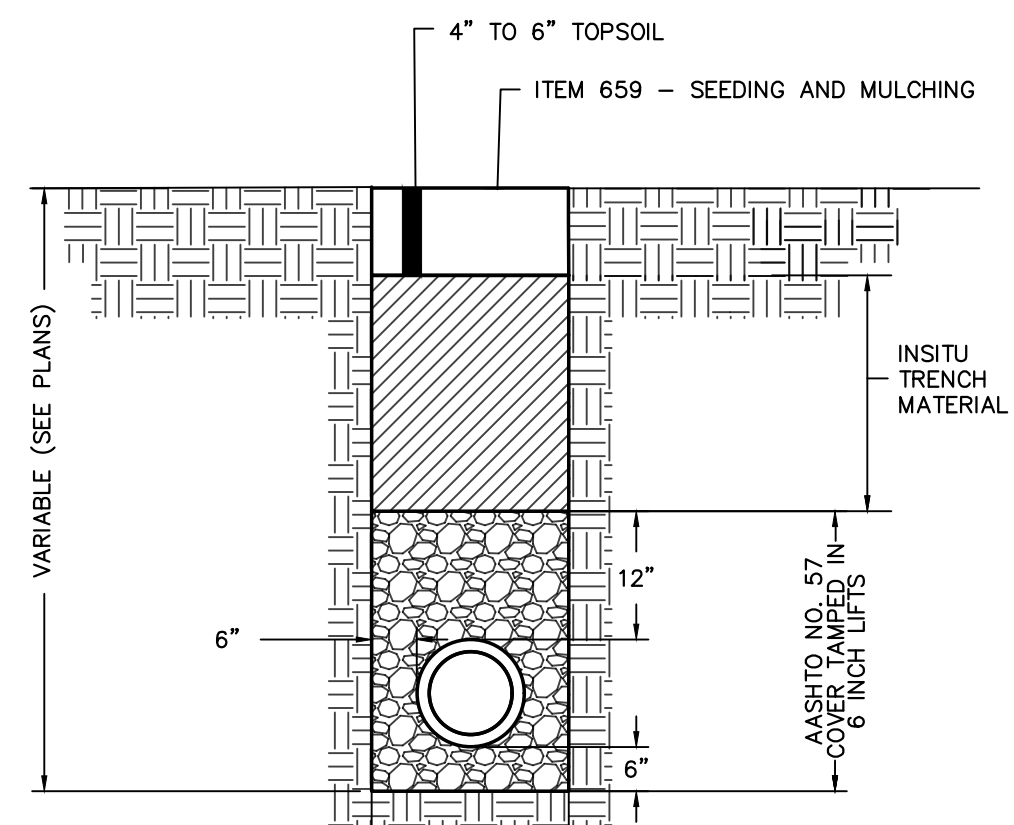
UNLESS OTHERWISE REQUIRED BY WATER UTILITY, RESTRAINED MECHANICAL JOINTS SHALL BE USED. ADAPTERS SHALL BE PROVIDED FOR CONNECTION TO EXISTING MAIN IF REQUIRED.

THE CONTRACTOR SHALL BE RESPONSIBLE FOR COORDINATING ALL WORK ASSOCIATED WITH THE WATERLINE LOWERING WITH THE VILLAGE OF BALTIC. THE CONTRACTOR SHALL NOTIFY THE VILLAGE AT LEAST THREE WORKING DAYS IN ADVANCE OF THIS PROPOSED WORK ON THE WATERLINE.

**WATER LOWERING DETAIL**  
NOT TO SCALE



**TIE IN DETAIL**  
NOT TO SCALE



\* WIDTH OF TRENCH IS MEASURED 6" ABOVE TOP OF PIPE. TRENCH MAY BE WIDER ABOVE THIS LINE.  
W = "D"+1'0"

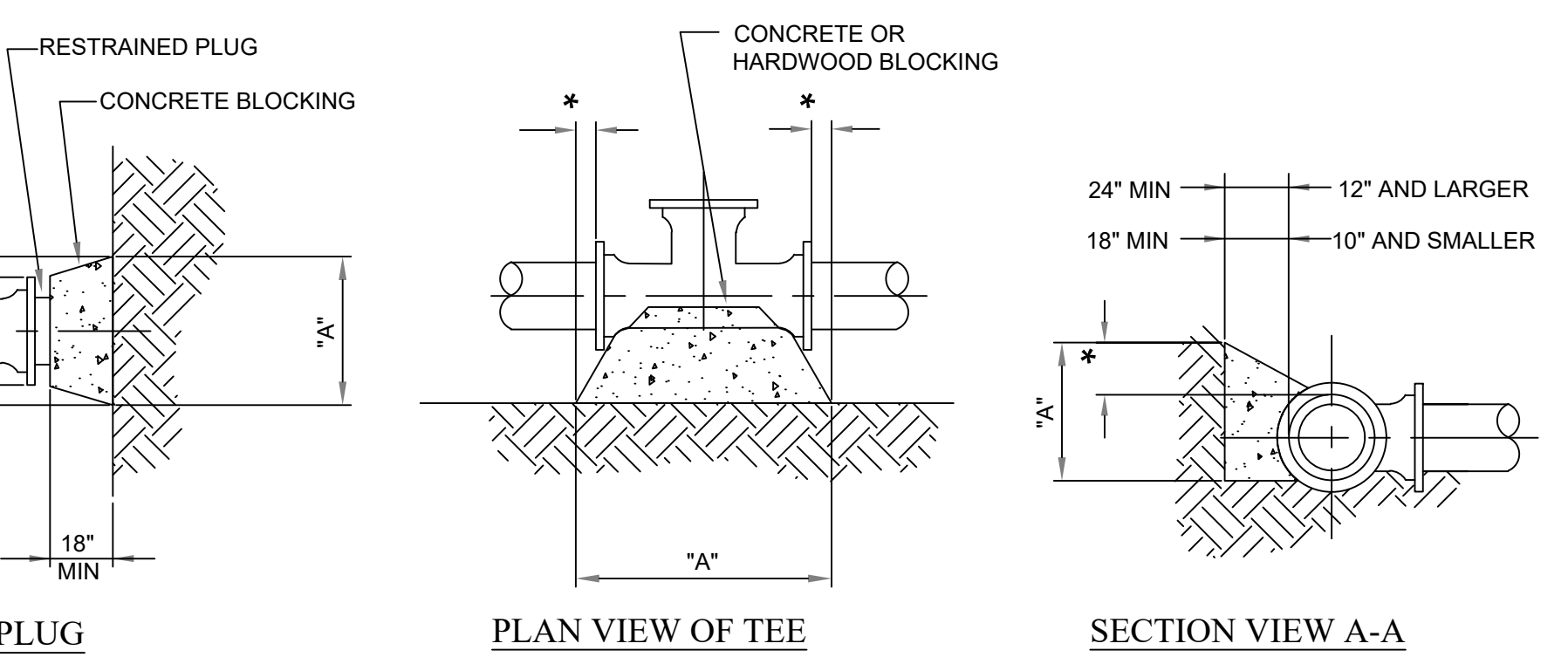
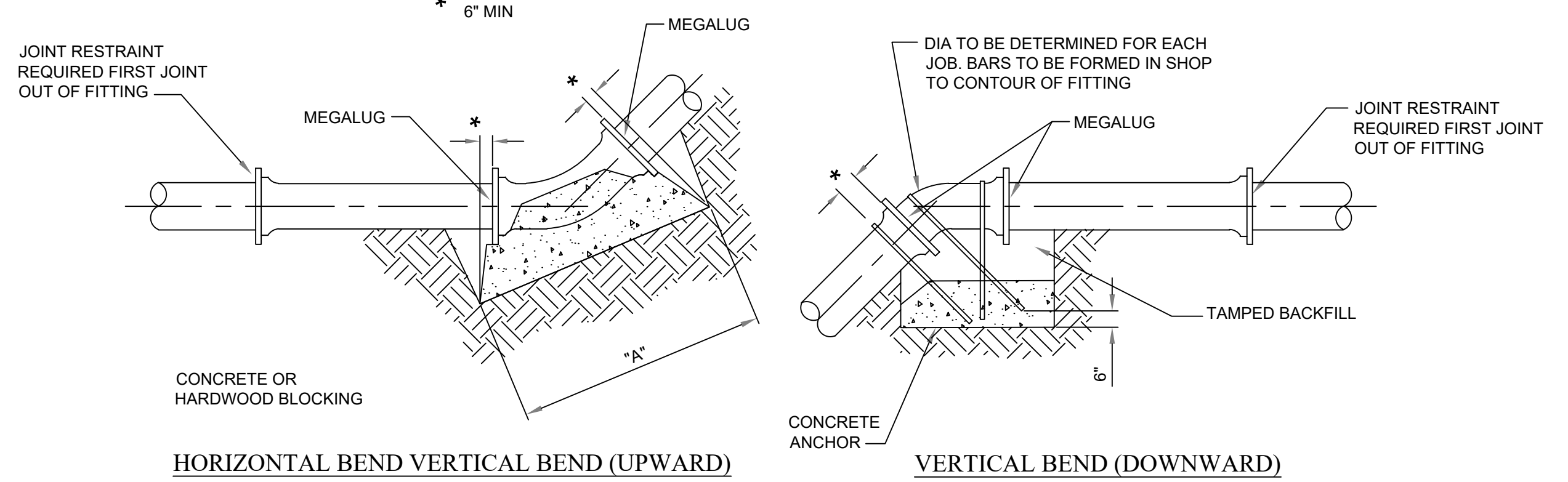
**SOIL**  
NOTE: NOT TO SCALE  
1. AGGREGATE TO BE PROVIDED BY ODOT PREQUALIFIED SUPPLIER.

**"A" HORIZONTAL BENDS**

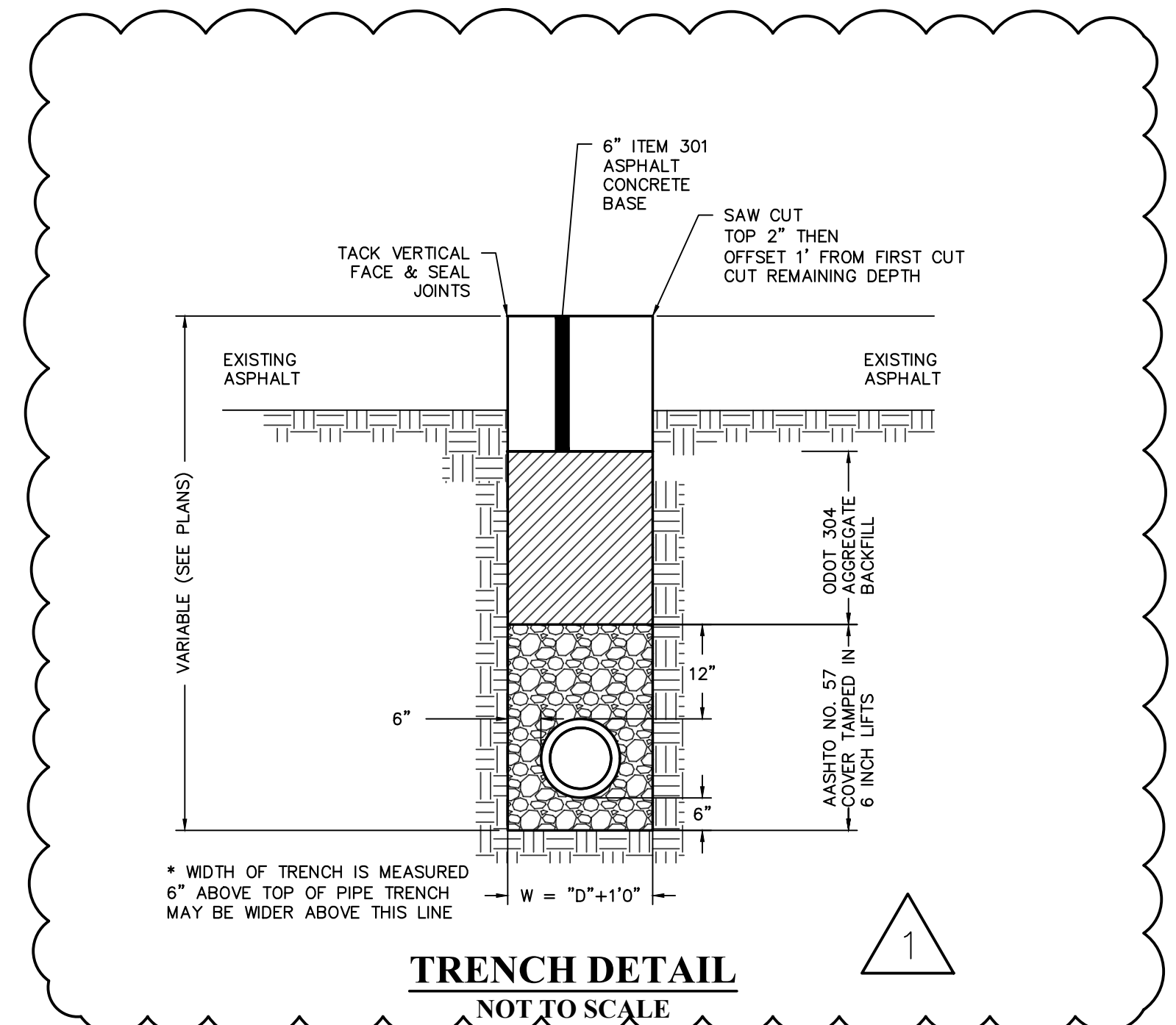
	90°	45°	22.5°	TEE	PLUG
6"	6"	6"	6"	6"	6"
8"	8"	8"	8"	8"	8"
10"	10"	10"	10"	10"	10"
12"	12"	12"	12"	12"	12"
16"	16"	16"	16"	16"	16"

**MINIMUM VOLUME OF CONCRETE FOR TOP OF VERTICAL BENDS**

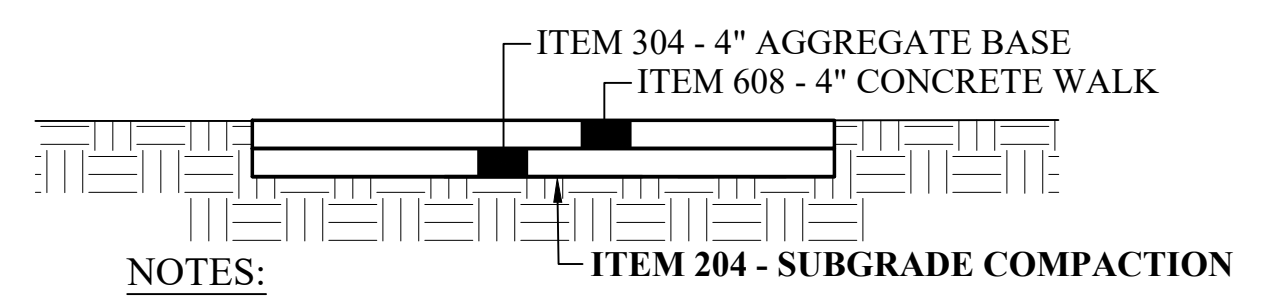
6"	4 C.F.
8"	11 C.F.
10"	22 C.F.
12"	37 C.F.
16"	71 C.F.



**TYPICAL WATERMAIN THRUST BLOCKING DETAILS**  
NOT TO SCALE

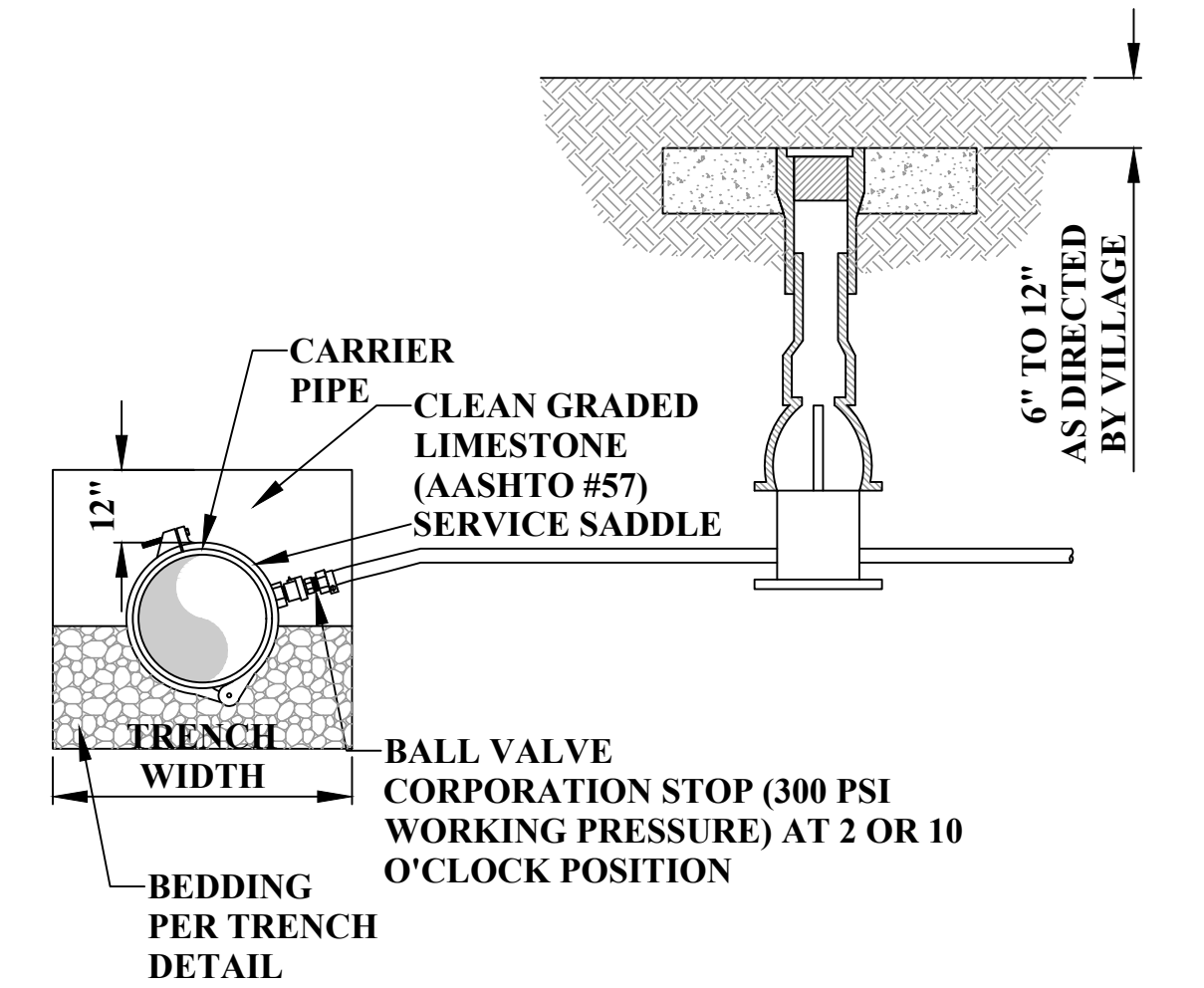


**TRENCH DETAIL**  
NOT TO SCALE

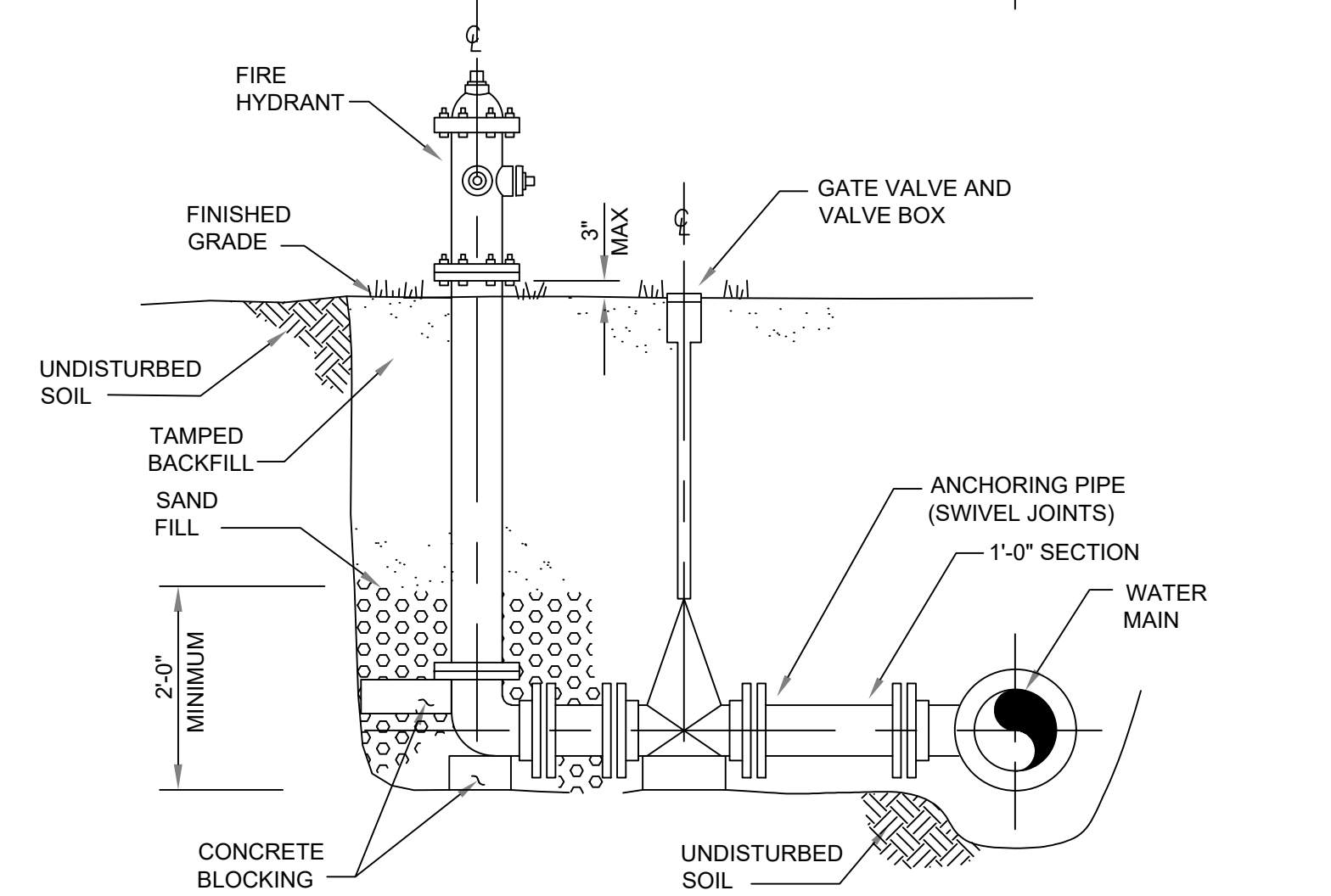
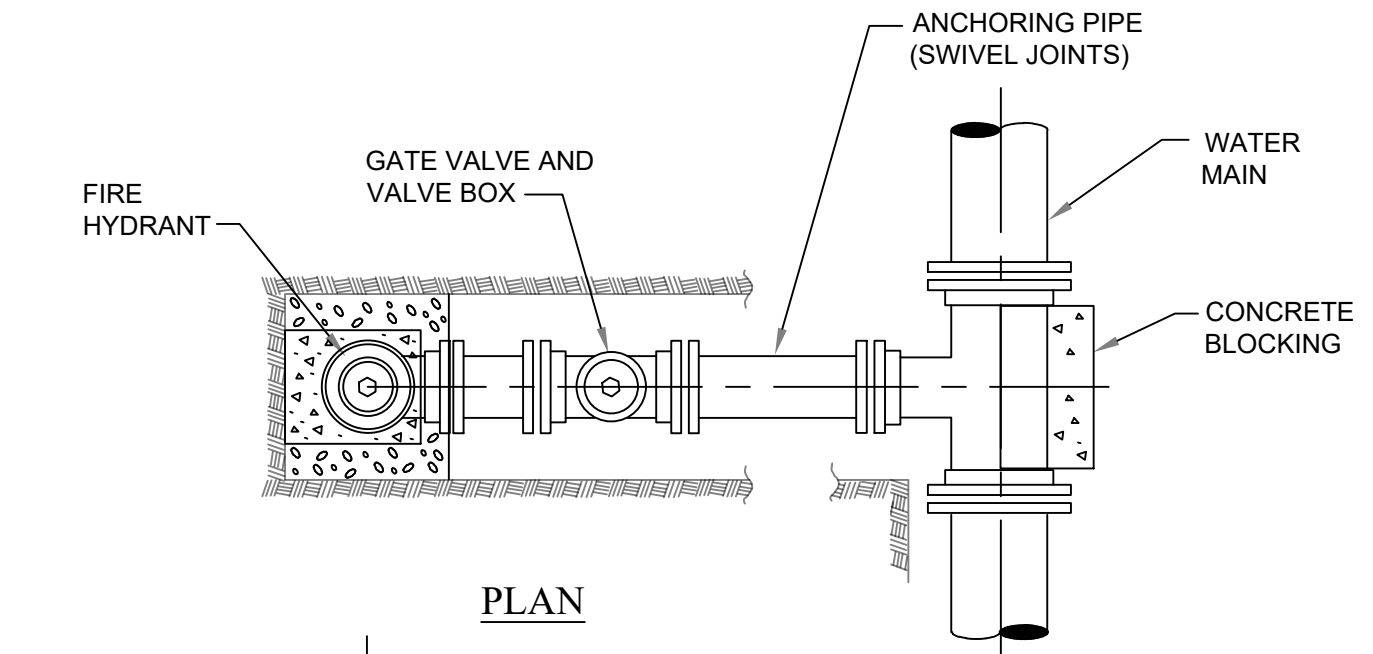


**NOTES:**  
 1. CONTRACTOR SHALL REMOVE EXISTING SIDEWALK AS REQUIRED TO PERFORM WORK. EXISTING SIDEWALK SHALL BE REMOVED JOINT TO JOINT.  
 2. CONTRACTOR SHALL PROVIDE ODOT ITEM 608 - 6" CONCRETE WALK AT DRIVEWAYS.

**SIDEWALK DETAIL**  
NOT TO SCALE



**3/4" WATER SERVICE CONNECTION DETAIL**  
NOT TO SCALE



**HYDRANT PERPENDICULAR TO WATER MAIN DETAIL**  
NOT TO SCALE

NO.	BY	DATE	REVISION	DESCRIPTION
1	SMD	3FEB2023	REVISED	ASPHALT TRENCH DETAIL

SCALE: NOT TO SCALE

DRAWN: SMD	DATE: 16SEP2021
CHECKED: DATE:	DATE:
APPROVED: DATE:	DATE:
SURVEY DATE:	
SURVEY BY:	
FIELD BOOK No.:	

**THRASHER**  
 400 3rd STREET SE  
 CANTON, OHIO 44702  
 www.thrashereng.com  
 PHONE (330)-451-2042 FAX (330)-451-2043

PHASE No.	
CONTRACT No.	
PROJECT No.	<b>010-10146</b>

**VILLAGE OF BALTIC  
 MAPLE STREET WATER  
 LINE REPLACEMENT  
 DETAILS - TYPICAL WATER LINE**