

ADVERTISEMENT FOR BIDS
MORGANTOWN BOPARC (BOARD OF PARKS AND RECREATION COMMISSIONERS)
MONONGALIA COUNTY, WEST VIRGINIA
FOUNDRY STREET LINK SIGNS

General Notice

Morgantown BOPARC (Owner) is requesting Bids for the manufacturing and delivery of signs for the following project:

Foundry Street Link

Bids for the Project will be received via email until **Friday, December 16, 2022, at 5:00 pm** local time.

The Project includes the following Work:

Manufacturing of four directional totem signs, two trailhead totem signs, and one special features sign. Signs consist of synthetic wood material with aluminum message panels where text and symbols will be displayed. This project will include all materials and labor to manufacture and deliver the signs to the owner. Installation is not included as part of this contract.

Obtaining the Bidding Information

Information for bidding the project can be downloaded at no cost to bidders at the following designated website:

[MORGANTOWN BOPARC - MONOGALIA COUNTY, WEST VIRGINIA - The Thrasher Group](#)

A bidder may not withdraw his bid for a period of ninety (90) days after the date set for the opening of bids. Morgantown BOPARC reserves the right to reject any and all bids. There will be no pre-bid conference for this project. All bids may be submitted via email to srich@thethrashergroup.com.



Request for Quotes for

Trail Directional Amenity Signs and Trailhead Totem Signs

Foundry Street Link, Morgantown, WV

The Mon River Trails Conservancy and Board of Parks and Recreation Commissioners (BOPARC) are seeking bids from qualified companies for the manufacturing and delivery of Trail Directional Amenity Signs and Trailhead Totem Signs. Installation is not included in this project.

Four Directional- Town Amenities Signs

2 sided sign 1'3 1/2" wide x 7' 2" high

Synthetic wood construction

Inlaid .125" aluminum message panels 2 sides paint and graphics

Sign face panels in .125" aluminum, digitally printed graphic with graffiti resistant overlamine

Stainless steel hardware on the faces

Steel base plate bolt down design for J bolts

Two Trailhead "Totem" Sign

2 sided sign 19" wide x 11'6" high

Synthetic wood construction

Inlaid .125" aluminum message panels 2 sides paint and graphics

Sign face panels in .125" aluminum, digitally printed graphic with graffiti resistant overlamine

Stainless steel hardware on the faces

Steel base plate bolt down design for J bolts

One Special Features Sign

2 sided sign 7 1/2" wide x 7' high

Synthetic wood construction

Inlaid .125" aluminum message panels 2 sides paint and graphics

Sign face panels in .125" aluminum, digitally printed graphic with graffiti resistant overlamine

Stainless steel hardware on the faces

Steel base plate bolt down design for J bolts

Examples of similar signs can be found on the Mon River and Deckers Creek Rail-Trails at multiple trailheads and font, logo, and color will be provided to the awarded company by the Mon River Trails Conservancy. Photos are available by emailing Samuel Rich at srich@thethrashergroup.com.

Written quote should provide a break-out cost for:

Cost per sign

Cost for delivery to: BOPARC Maintenance Facility 24 Alkire Drive, Morgantown, WV 26501

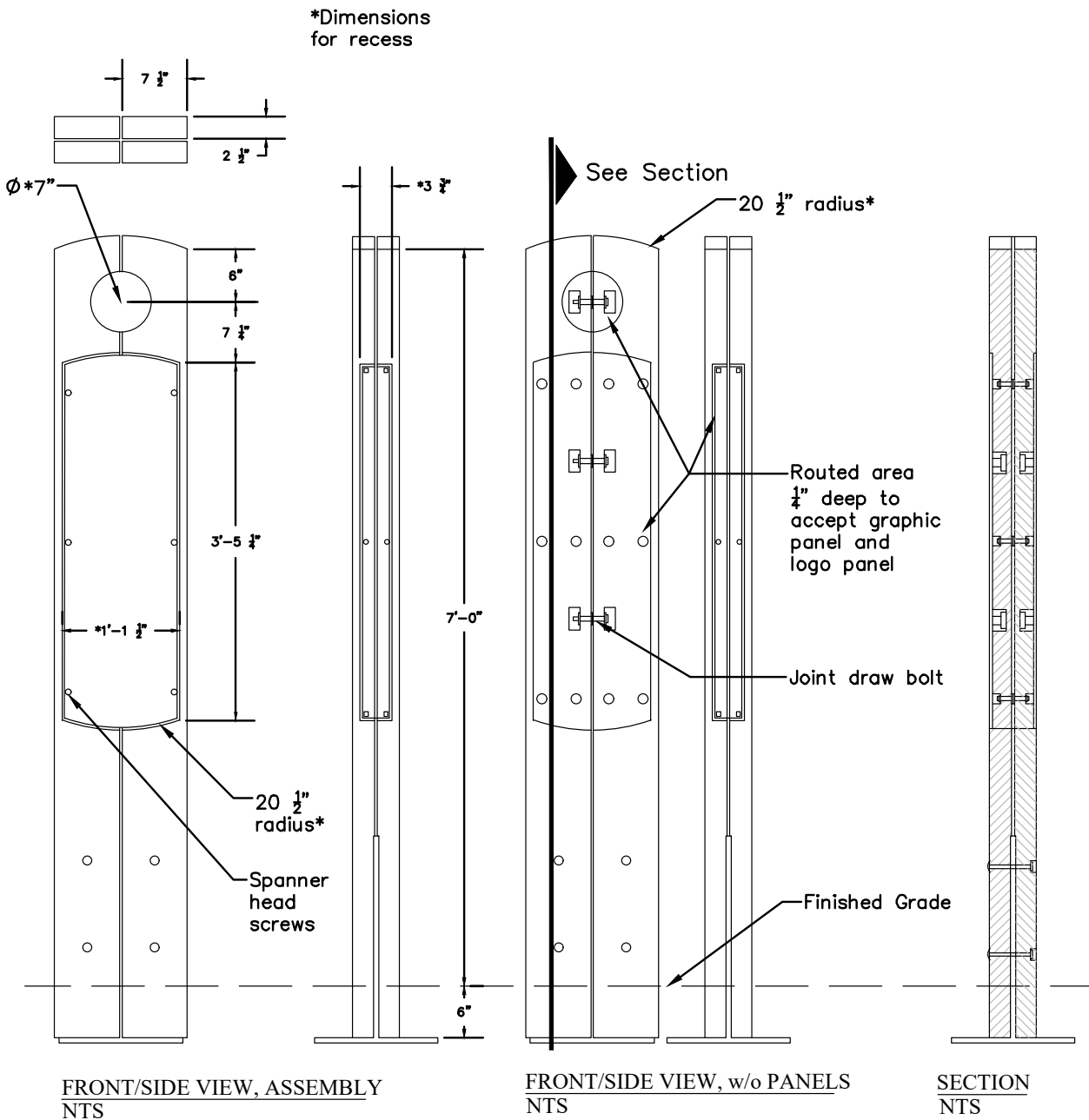
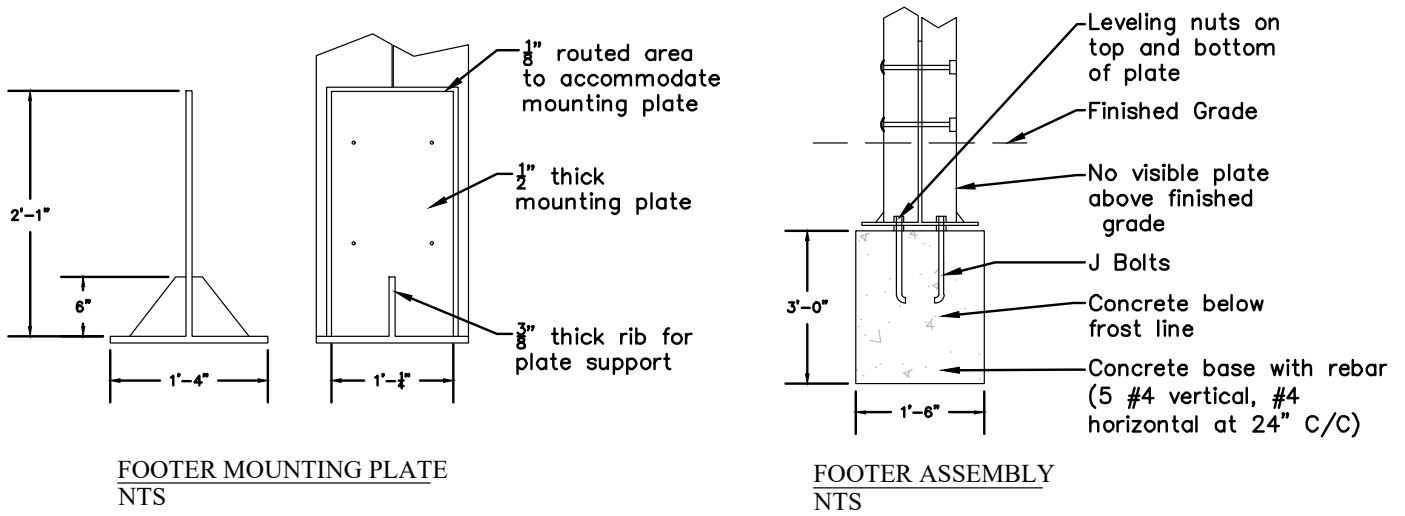
Total cost

The “Foundry Street Link” project is partially funded by a grant from the Federal Highway Administration’s Recreational Trails Program administered by the West Virginia Department of Transportation, Division of Highways. Design and control of the project must be in conformance with the guidelines of the Recreational Trails Program and all applicable State and Federal Regulations. Procurement of said products shall be in accordance with Federal and State laws, rules, and regulations.

The Mon River Trails Conservancy and Board of Parks and Recreation Commissioners reserves the right to accept or reject any and/or all estimates.

Bids should be received by 5:00 PM EST, December 16, 2022. Bids are to be submitted via email to Samuel Rich at srich@thethrashergroup.com.

For any questions, please contact: Samuel Rich, Project Manager, The Thrasher Group:
srich@thethrashergroup.com / (304) 848-6490



DIRECTIONAL SIGN

LT

FRONT

BACK

RT

Morgantown

Hazel Ruby McQuain Park



Mon River Rail-Trail



Downtown
Morgantown



Wharf District



Hazel Ruby
McQuain Park



0.5 Stanley's Spot
Dog Park

1.5 Marilla Park



2 Sabraton



13 Masontown

17.3 Reedsville

19.2 Trail End

Morgantown

Hazel Ruby McQuain Park

SIGN A
NOT TO SCALE

LT

FRONT

BACK

RT

Morgantown

Hazel Ruby McQuain Park

Hazel Ruby
McQuain Park



Deckers Creek
Rail-Trail



Downtown
Morgantown



Wharf District



3.5 Uffington

19 Prickett's Fort
State Park

19 Marion County
Rail-Trail

Morgantown

Hazel Ruby McQuain Park

SIGN B
NOT TO SCALE

LT

FRONT

BACK

RT

Morgantown

Hazel Ruby McQuain Park



Hazel Ruby
McQuain Park



Wharf District



Deckers Creek
Rail-Trail



Downtown
Morgantown



1.3 Sixth Street



2.2 Arboretum

3.6 Star City

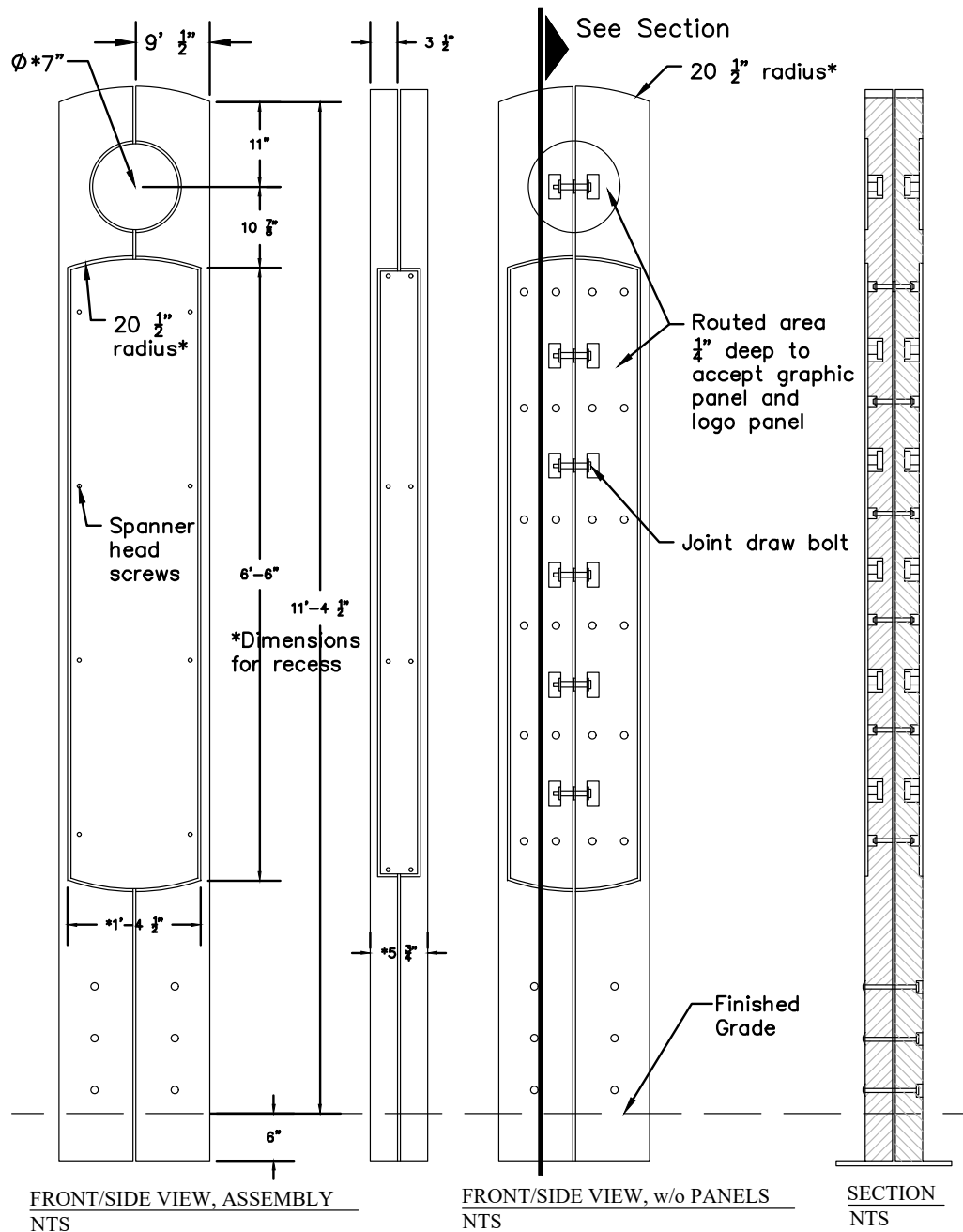
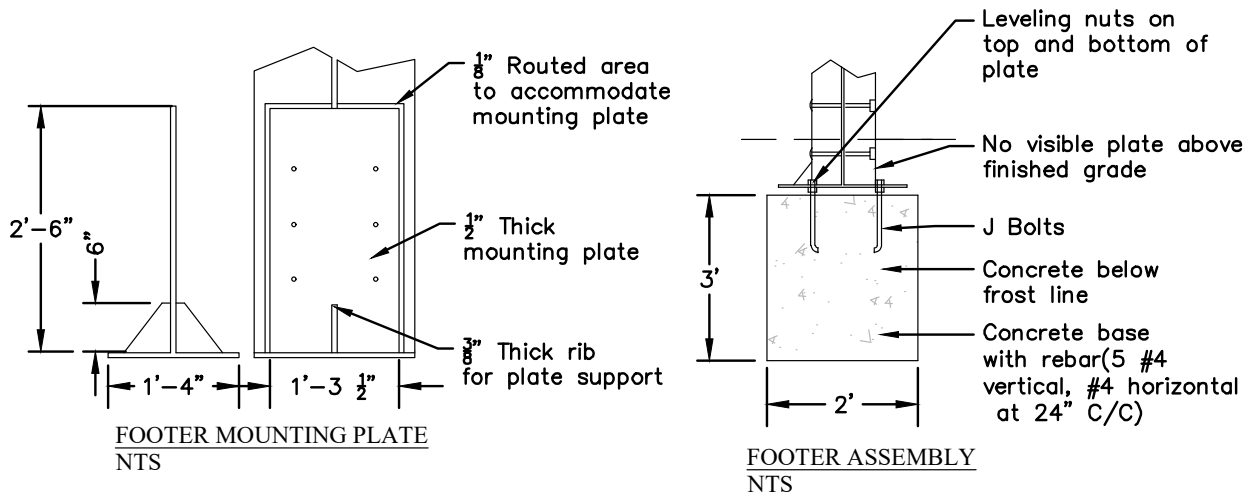
10 State Line
Sheepskin
Rail-Trail

11 Point Marion
Pennsylvania

Morgantown

Hazel Ruby McQuain Park

SIGN C
NOT TO SCALE



TRAIL TOTEM

RT

MON RIVER RAIL-TRAIL

FRONT

Hazel Ruby McQuain
RIVERFRONT PARK



LT

MON RIVER RAIL-TRAIL

TRAIL TOTEM A
NOT TO SCALE

RT

MON RIVER RAIL-TRAIL

FRONT

Sturgiss Street
TRAIL ACCESS



Deckers Creek
Trail



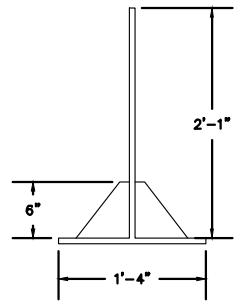
Mon River
Trail



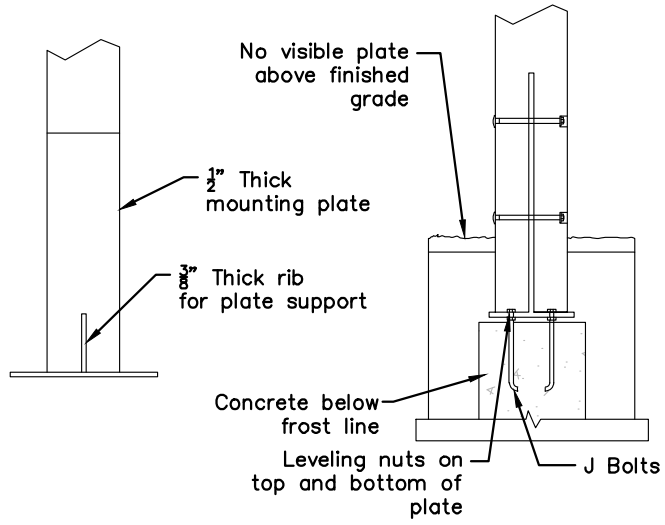
LT

MON RIVER RAIL-TRAIL

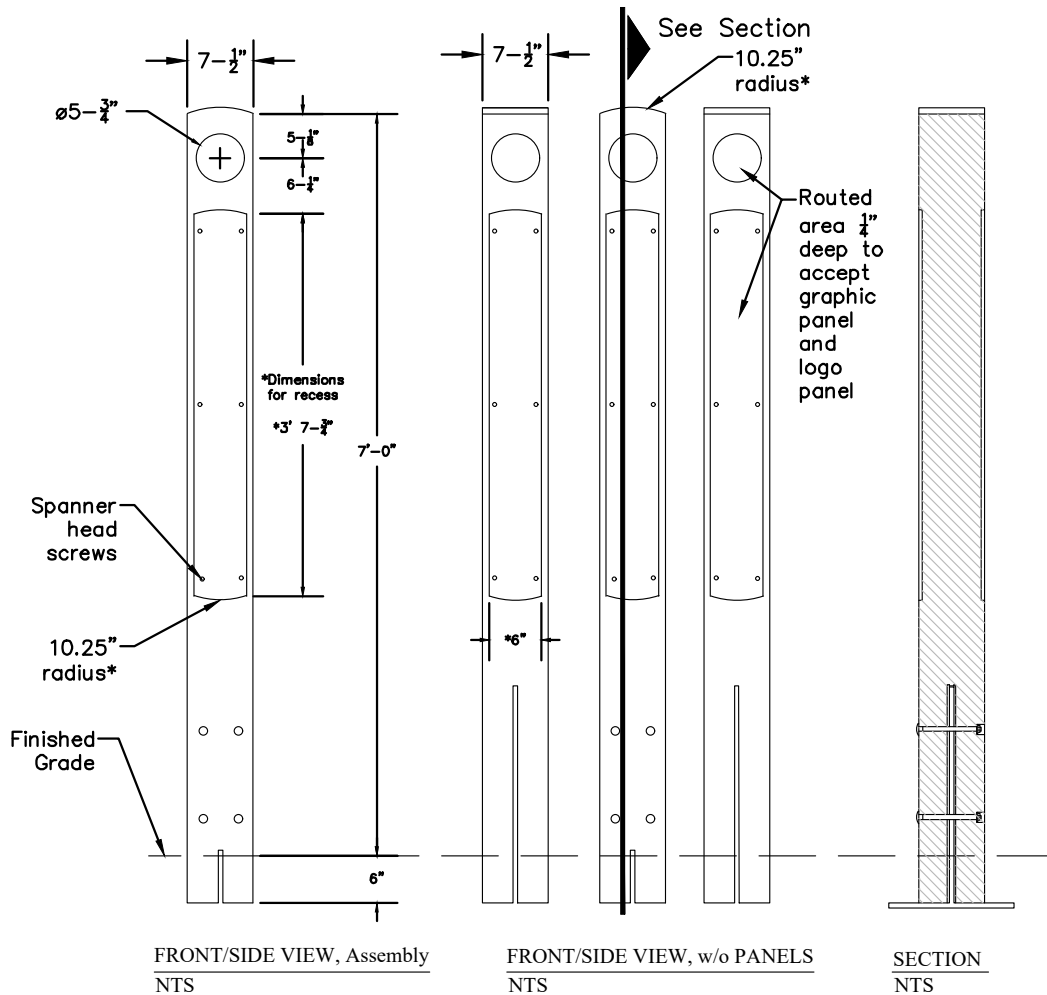
TRAIL TOTEM B
NOT TO SCALE



FOOTER MOUNTING PLATE
NTS



FOOTER ASSEMBLY
NTS



SPECIAL FEATURES

FRONT BACK



SPECIAL FEATURES

SIGN A

NOT TO SCALE