

**TOWN OF GORDONSVILLE, VA  
ORANGE COUNTY, VIRGINIA**

**TOWN HALL PARKING LOT RENOVATIONS  
ADDENDUM #2**

**JUNE 10, 2022  
THRASHER PROJECT #030-10220**

TO WHOM IT MAY CONCERN:

A Pre-Bid Conference was held on Thursday, May 26, 2022 on the above-referenced project. The following are clarifications and responses to questions posed by contractors for the above reference project.

**A. GENERAL**

1. **THE BID FORM HAS BEEN INCLUDED WITH THIS ADDEUNDUM**

**B. SPECIFICATIONS**

1. Spec Section 01220 Unit Price has been revised and is included within this addendum.

**C. DRAWINGS**

1. Sheet 7 – Revisions to Site Plan
  - Clarified limits of new curb
2. Sheet 9 – Updated Lighting Pan
3. Added additional Detail Sheet D4

**D. QUESTIONS AND RESPONSES**

**QUESTION**

1. Will there be curb along the edge of the parking areas? Looking at the plans we did not see curb where parking abuts grass areas.

**ANSWER**

Yes, there is curb abutting those areas. Notes have been added to Sheet 7 to depict begin and end of curb sections.

**QUESTION**

2. Who will inspect compaction during refilling of those areas that have base failure.

**ANSWER**

Inspection will be coordinated with the Engineer and the Town of Gordonsville. Contractor is not responsible for payment of inspection but will be responsible for coordination for scheduling purposes.

**QUESTION**

3. What is the depth of the base failure?

**ANSWER**

Full depth replacement detail is provided on Detail Sheet D1.

**QUESTION**

4. The electrical cut sheets provided, did not specify material type?

**ANSWER**

The pole should be Cast Aluminum. Match color to similar poles on Main Street.

**E. CLARIFICATIONS**

1. Plans have been prepared in color so when printing, please print in color.

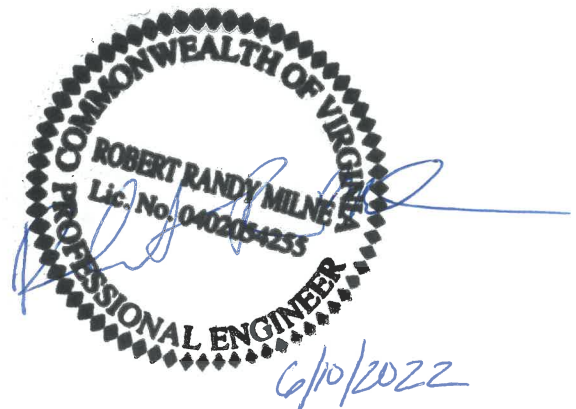
If you have any questions or comments, please feel free to contact me at your earliest convenience. As a reminder, bids will be received until 10:00 AM. on Wednesday, June 15 2022, at Gordonsville Town Hall Conference Room, 112 South Main Street, Gordonsville, VA. Good luck to everyone and thank you for your interest in the project.

Sincerely,

THE THRASHER GROUP, INC.



Robert R. Milne, PE  
Sr. Project Manager



Enclosures

# BID FORM FOR CONSTRUCTION CONTRACT

The terms used in this Bid with initial capital letters have the meanings stated in the Instructions to Bidders, the General Conditions, and the Supplementary Conditions.

## ARTICLE 1—OWNER AND BIDDER

1.01 This Bid is submitted to:

*Town of Gordonsville  
P.O. Box 276  
112 S. Main Street  
Gordonsville, VA 22942*

1.02 The undersigned Bidder proposes and agrees, if this Bid is accepted, to enter into an Agreement with Owner in the form included in the Bidding Documents to perform all Work as specified or indicated in the Bidding Documents for the prices and within the times indicated in this Bid and in accordance with the other terms and conditions of the Bidding Documents.

## ARTICLE 2—ATTACHMENTS TO THIS BID

2.01 The following documents are submitted with and made a condition of this Bid:

A. Bid Opening Requirements

## ARTICLE 3—BASIS OF BID—LUMP SUM BID AND UNIT PRICES

### GENERAL

The Bidder shall take notice of and shall be responsible for any local or state taxes levied and applicable, and the cost for the same shall be included as part of the submitted Bid.

The total Bid cost stated includes a complete operating installation including furnishing and installation of any and all changes or additions in plans, piping, mechanical work, additional electrical work, accessories, controls, etc. necessary to accommodate alternative equipment systems or materials used in construction.

### BID PROPOSAL

The Bidder agrees to perform all required Work described in the detailed Specifications and as shown on the Plans for the complete construction and placing in satisfactory operation the Town Hall Parking Lot Renovations. The Project "Sequence of Construction" has been detailed in the Drawings and Specification Division 1, Project Summary, Section 011000. The Bidder agrees to perform all the Work proposed for the total of the following Bid prices.

3.01 *Lump Sum Bids*

A. Bidder will complete the Work in accordance with the Contract Documents for the lump sum (stipulated) price(s), together with any Unit Prices indicated in Paragraph 3.02 and shown in the bid schedule.

B. Lump Sum Bids may be one of the following:

1. Lump Sum Price (Single Lump Sum)
  2. Lump Sum Price (Base Bid and Alternates)
  3. Lump Sum Price (Sectional Lump Sum Bids)
- C. All specified cash allowance(s) are included in the price(s) set forth in the bid schedule, and have been computed in accordance with Paragraph 13.02 of the General Conditions.
- D. All specified contingency allowances are included in the price(s) set forth in the bid schedule, and have been computed in accordance with Paragraph 13.02 of the General Conditions.

3.02 *Unit Price Bids*

- A. Bidder will perform the following Work at the indicated unit prices as shown in the Bid Schedule.
- B. Bidder acknowledges that:
1. each Bid Unit Price includes an amount considered by Bidder to be adequate to cover Contractor's overhead and profit for each separately identified item, and
  2. estimated quantities are not guaranteed, and are solely for the purpose of comparison of Bids, and final payment for all Unit Price Work will be based on actual quantities, determined as provided in the Contract Documents.

3.03 *Total Bid Price (Lump Sum and Unit Prices)*

## BID SCHEDULE

### PROPOSED TOWN HALL PARKING LOT RENOVATIONS FOR THE

### TOWN OF GORDONSVILLE ORANGE COUNTY, VIRGINIA

*NOTE: Bid PRICE amounts are to be shown in both words and figures. In case of discrepancy, the amount shown in words will govern. Bids shall include sales tax and all other applicable taxes and fees.*

Item #	Qty.	UNIT	DESCRIPTION	UNIT PRICE	UNIT PRICE WRITTEN IN WORDS	TOTAL PRICE
1	1	LS	Mobilization/Demobilization			
2	1	LS	Construction Layout			
3	285	CY	Earthwork			
4	2,290	SY	Milling			

Item #	Qty.	UNIT	DESCRIPTION	UNIT PRICE	UNIT PRICE WRITTEN IN WORDS	TOTAL PRICE
5	210	TN	1 ½" Overlay Wearing HMA, Type I			
6	220	TN	8" Base Aggregate			
7	150	TN	2 ½" Base Course HMA, Type II			
8	1,725	SY	Separation Fabric			
9	8,735	SF	Removal of Asphalt and Stone			
10	1	LS	Handicap Symbol Markings			
11	1	LS	Parking Lot Striping			
12	1	LS	Erosion and Sediment Control			

Item #	Qty.	UNIT	DESCRIPTION	UNIT PRICE	UNIT PRICE WRITTEN IN WORDS	TOTAL PRICE
13	1	EA	Drop Inlet			
14	2	EA	Nyloplast Drain			
15	295	FT	12" HDPE Storm Pipe			
16	40	SY	4" Concrete Sidewalk			
17	765	FT	Concrete Curb			
18	1	LS	Bio-Retention			
19	1	LS	Landscaping			
20	2	EA	Yard Hydrant			

Item #	Qty.	UNIT	DESCRIPTION	UNIT PRICE	UNIT PRICE WRITTEN IN WORDS	TOTAL PRICE
21	235	FT	2" C900 Water Line			
22	17	EA	Light Pole			
23	1	LS	Electrical Service			

**TOTAL BID:** \_\_\_\_\_  
 (Words)

\_\_\_\_\_ (\$ \_\_\_\_\_)  
 (Words) (Figures)

**(Amounts are to be shown in both words and figures. In case of discrepancy, the amount shown in words will govern.)**



3.04 *Method of Award*

If at the time this contract is to be awarded, the lowest total bid submitted by a qualified, responsive, responsible Bidder does not exceed the amount of funds then estimated by the Owner, as available to finance the contract, the construction contract will be awarded. If such bids exceeds such amount, the owner may reject all bids.

**ARTICLE 4 — BASIS OF BID — COST PLUS FEE**

4.01 ~~The Contract Price will be the Cost of the Work, determined as provided in Paragraph 13.01 of the General Conditions, together with the following fee, and subject to the Guaranteed Maximum Price.~~

4.02 *Contractor's Fee*

~~A. Contractor's fee will be [number] percent of the Cost of the Work. No fee will be payable on the basis of costs itemized as excluded in Paragraph 13.01.C of the General Conditions.~~

~~1. The maximum amount payable by Owner as a percentage fee (Guaranteed Maximum Fee) will not exceed \$[insert cap amount], subject to increases or decreases for changes in the Work.~~

~~B. Contractor's fee will be determined by applying the following percentages to the various portions of the Cost of the Work as defined in Article 13 of the General Conditions. No fee will be payable on the basis of costs itemized as excluded in Paragraph 13.01.C of the General Conditions:~~

<b>Costs</b>	<b>Percent</b>
<del>Payroll costs (See Paragraph 13.01.B.1, General Conditions)</del>	
<del>Materials and Installed Equipment cost (GC 13.01.B.2)</del>	
<del>Amounts to be paid to Subcontractors (GC 13.01.B.3)</del>	
<del>Amount to be paid to special consultants (GC 13.01.B.4)</del>	
<del>Other costs (GC 13.01.B.5)</del>	

~~1. The maximum amount payable by Owner as a percentage fee (Guaranteed Maximum Fee) will not exceed \$[insert cap amount], subject to increases or decreases for changes in the Work.~~

~~C. Contractor's fee will be the fixed sum of \$[number].~~

4.03 *Guaranteed Maximum Price*

~~A. The Guaranteed Maximum Price to Owner of the Cost of the Work including Contractor's Fee will not exceed \$[Bidder fill in GMP].~~

**Deleted**

**ARTICLE 5 — PRICE PLUS TIME BID**

5.01 *Price Plus Time Contract Award (Stipulated Price Contract)*

~~A. The Bidder to which an award of the Contract will be made will be determined in part on the basis of the Total Bid Price and the total number of calendar days to substantially complete the Work, in accordance with the following:~~

	Description		Amount
A	1. Total Bid Price		\${number}
	2. Total number of calendar days to substantially complete the Work	{number} days	
	3. Liquidated Damages Rate (from Agreement)	\${number}/day	
B	4. Adjustment Amount (2 x 3)		\${number}
A+B	5. Amount for Comparison of Bids		\${number}

~~B. The purpose of the process in the table above is only to calculate the lowest price plus time (A+B) bid amount for bid comparison purposes. The price for completion of the Work (the Contract Price) is the Total Bid Price.~~

~~C. Bonds required under Paragraph 6.01 of the General Conditions will be based on the Contract Price.~~

5.02 ~~Price-Plus-Time Contract Award (Cost Plus Fee with Guaranteed Maximum Price Contract)~~

~~A. The Bidder to which an award of Contract will be made will be determined in part on the basis of the Guaranteed Maximum Price and the total number of calendar days to substantially complete the Work, in accordance with the following:~~

	Description		Amount
A	1. Guaranteed Maximum Price		\${number}
	2. Total number of calendar days to substantially complete the Work	{number} days	
	3. Liquidated Damages Rate (from Agreement)	\${number}/day	
B	4. Adjustment Amount (2 x 3)		\${number}
A+B	5. Amount for Comparison of Bids		\${number}

~~B. The purpose of the process in the table above is only to calculate the lowest price plus time (A+B) bid amount for bid comparison purposes. The price for completion of the Work (the Contract Price) is based on the cost of the Work, plus a fee, subject to a guaranteed maximum price, as set forth in the Agreement.~~

~~C. Bonds required under Paragraph 6.01 of the General Conditions will be based on the Contract Price.~~

~~Deleted~~

**ARTICLE 6—TIME OF COMPLETION**

6.01 Bidder agrees that the Work will be substantially complete and will be completed and ready for final payment in accordance with Paragraph 15.06 of the General Conditions on or before the dates or within the number of calendar days indicated in the Agreement.

6.02 Bidder agrees that the Work will be substantially complete on or before **[Bidder inserts date]**, and will be completed and ready for final payment in accordance with Paragraph 15.06 of the General Conditions on or before **[Bidder inserts date]**.

~~Deleted~~

6.03 Bidder agrees that the Work will be substantially complete within **[Bidder inserts number]** calendar days after the date when the Contract Times commence to run as provided in Paragraph 4.01 of the General Conditions, and will be completed and ready for final payment in

~~accordance with Paragraph 15.06 of the General Conditions within [Bidder inserts number] calendar days after the date when the Contract Times commence to run.~~

**Deleted**

6.04 Bidder accepts the provisions of the Agreement as to liquidated damages.

**ARTICLE 7—BIDDER’S ACKNOWLEDGEMENTS: ACCEPTANCE PERIOD, INSTRUCTIONS, AND RECEIPT OF ADDENDA**

7.01 *Bid Acceptance Period*

A. This Bid will remain subject to acceptance for 90 days after the Bid opening, or for such longer period of time that Bidder may agree to in writing upon request of Owner.

7.02 *Instructions to Bidders*

A. Bidder accepts all of the terms and conditions of the Instructions to Bidders, including without limitation those dealing with the disposition of Bid security.

7.03 *Receipt of Addenda*

A. Bidder hereby acknowledges receipt of the following Addenda:

<b>Addendum Number</b>	<b>Addendum Date</b>

**ARTICLE 8—BIDDER’S REPRESENTATIONS AND CERTIFICATIONS**

8.01 *Bidder’s Representations*

A. In submitting this Bid, Bidder represents the following:

1. Bidder has examined and carefully studied the Bidding Documents, including Addenda.
2. Bidder has visited the Site, conducted a thorough visual examination of the Site and adjacent areas, and become familiar with the general, local, and Site conditions that may affect cost, progress, and performance of the Work.
3. Bidder is familiar with all Laws and Regulations that may affect cost, progress, and performance of the Work.
4. Bidder has carefully studied the reports of explorations and tests of subsurface conditions at or adjacent to the Site and the drawings of physical conditions relating to existing surface or subsurface structures at the Site that have been identified in the Supplementary Conditions, with respect to the Technical Data in such reports and drawings.
5. Bidder has carefully studied the reports and drawings relating to Hazardous Environmental Conditions, if any, at or adjacent to the Site that have been identified in the Supplementary Conditions, with respect to Technical Data in such reports and drawings.
6. Bidder has considered the information known to Bidder itself; information commonly known to contractors doing business in the locality of the Site; information and observations obtained from visits to the Site; the Bidding Documents; and the Technical Data identified in the Supplementary Conditions or by definition, with respect to the effect of such information, observations, and Technical Data on (a) the cost, progress, and performance of the Work; (b) the means, methods, techniques, sequences, and procedures

of construction to be employed by Bidder, if selected as Contractor; and (c) Bidder's (Contractor's) safety precautions and programs.

7. Based on the information and observations referred to in the preceding paragraph, Bidder agrees that no further examinations, investigations, explorations, tests, studies, or data are necessary for the performance of the Work at the Contract Price, within the Contract Times, and in accordance with the other terms and conditions of the Contract.
8. Bidder is aware of the general nature of work to be performed by Owner and others at the Site that relates to the Work as indicated in the Bidding Documents.
9. Bidder has given Engineer written notice of all conflicts, errors, ambiguities, or discrepancies that Bidder has discovered in the Bidding Documents, and of discrepancies between Site conditions and the Contract Documents, and the written resolution thereof by Engineer is acceptable to Contractor.
10. The Bidding Documents are generally sufficient to indicate and convey understanding of all terms and conditions for performance and furnishing of the Work.
11. The submission of this Bid constitutes an incontrovertible representation by Bidder that without exception the Bid and all prices in the Bid are premised upon performing and furnishing the Work required by the Bidding Documents.

#### 8.02 *Bidder's Certifications*

##### A. The Bidder certifies the following:

1. This Bid is genuine and not made in the interest of or on behalf of any undisclosed individual or entity and is not submitted in conformity with any collusive agreement or rules of any group, association, organization, or corporation.
2. Bidder has not directly or indirectly induced or solicited any other Bidder to submit a false or sham Bid.
3. Bidder has not solicited or induced any individual or entity to refrain from bidding.
4. Bidder has not engaged in corrupt, fraudulent, collusive, or coercive practices in competing for the Contract. For the purposes of this Paragraph 8.02.A:
  - a. Corrupt practice means the offering, giving, receiving, or soliciting of anything of value likely to influence the action of a public official in the bidding process.
  - b. Fraudulent practice means an intentional misrepresentation of facts made (a) to influence the bidding process to the detriment of Owner, (b) to establish bid prices at artificial non-competitive levels, or (c) to deprive Owner of the benefits of free and open competition.
  - c. Collusive practice means a scheme or arrangement between two or more Bidders, with or without the knowledge of Owner, a purpose of which is to establish bid prices at artificial, non-competitive levels.
  - d. Coercive practice means harming or threatening to harm, directly or indirectly, persons or their property to influence their participation in the bidding process or affect the execution of the Contract.

BIDDER hereby submits this Bid as set forth above:

Bidder:

\_\_\_\_\_  
*(typed or printed name of organization)*

By: \_\_\_\_\_  
*(individual's signature)*

Name: \_\_\_\_\_  
*(typed or printed)*

Title: \_\_\_\_\_  
*(typed or printed)*

Date: \_\_\_\_\_  
*(typed or printed)*

*If Bidder is a corporation, a partnership, or a joint venture, attach evidence of authority to sign.*

Attest: \_\_\_\_\_  
*(individual's signature)*

Name: \_\_\_\_\_  
*(typed or printed)*

Title: \_\_\_\_\_  
*(typed or printed)*

Date: \_\_\_\_\_  
*(typed or printed)*

Address for giving notices:

\_\_\_\_\_  
\_\_\_\_\_

Bidder's Contact:

Name: \_\_\_\_\_  
*(typed or printed)*

Title: \_\_\_\_\_  
*(typed or printed)*

Phone: \_\_\_\_\_

Email: \_\_\_\_\_

Address: \_\_\_\_\_  
\_\_\_\_\_  
\_\_\_\_\_

Bidder's Contractor License No.: (if applicable) \_\_\_\_\_

## SECTION 012200 - UNIT PRICES

### PART 1 - GENERAL

#### 1.1 SUMMARY

- A. Section includes administrative and procedural requirements for unit prices.

#### 1.2 DEFINITIONS

- A. Unit price is a price per unit of measurement for materials, equipment, or services, or a portion of the Work, added to or deducted from the Contract Sum by appropriate modification, if the scope of Work or estimated quantities of Work required by the Contract Documents are increased or decreased.

#### 1.3 PROCEDURES

- A. Unit prices include all necessary material, plus cost for delivery, installation, insurance, applicable taxes, overhead, and profit.
- B. Measurement and Payment: Methods of measurement and payment for unit prices are specified in Section 3.1.
- C. Owner reserves the right to reject Contractor's measurement of work-in-place that involves use of established unit prices and to have this work measured, at Owner's expense, by an independent surveyor acceptable to Contractor.
- D. List of Unit Prices: A schedule of unit prices is included in Part 3. Specification Sections referenced in the schedule contain requirements for materials described under each unit price.

### PART 2 - PRODUCTS (Not Used)

### PART 3 - EXECUTION

#### 3.1 SCHEDULE OF UNIT PRICES

- A. Mobilization
  - 1. Description: Shall include the cost of mobilization and demobilization. Maintaining traffic control throughout the parking lot, ingress/egress onto Main Street shall be incidental to this item.
  - 2. Unit of Measurement: Lump Sum
- B. Construction Layout / Stakeout

1. Description: Shall include the cost of all survey stakeout, as-builts, etc to ensure the proper location and elevation of the proposed work with the use of existing control. Any additional control or survey required shall be incidental to the construction layout.
  2. Unit of Measurement: Lump Sum
- C. Erosion and Sediment Control
1. Description: Shall include the furnishing, installation, maintenance, and removal of all necessary erosion and sediment control BMPs for the project.
  2. Unit of Measurement: Lump Sum
- D. Clearing and Grubbing
1. Clearing and grubbing shall be performed in accordance with federal, state and municipal specifications. Payment for this work shall be paid for by the lump sum and shall include all equipment, labor, etc. to clear and grub the site to prepare for site construction. The work shall also include all labor for removing the root bulb for the trees cleared to date, hauling of trees from their current location to the staging area on the parking lot.
  2. Unit of Measurement: Lump Sum
- E. Milling and Overlay
1. The cost of milling shall be paid for by the square yard unit bid price. This shall include all labor, equipment, and any other items associated with the construction of this item.
  2. Unit of Measurement: Square Yard
- F. Earthwork / Unclassified Excavation / Subgrade
1. Description: Cost shall include all earthwork/unclassified excavation, subgrade preparation, compacting, hauling, equipment, labor, etc. to grade the site to the design shown on the plans. Any unsuitable material or excess fill material shall become the property of the contractor and shall be their responsibility to remove off site.
  2. Unit of Measurement: Cubic Yard
- G. Landscaping
1. Description: Cost shall include all material, labor, equipment, etc. to place seed and mulch, sod on areas designated on the plans. The areas include, but not limited to, general lawn areas and slopes. The cost shall also include the furnishing and planting of all trees as shown on the plans.
  2. No payment shall be made in reclamation activities outside the construction limits of work as noted on drawings.
  3. No payment will be made for temporary reclamation.
  4. Unit of Measurement: Lump Sum
- H. Separation Fabric
1. Description: Cost shall include all material, equipment, and labor necessary to install the fabric.
  2. Unit of Measurement: Square Yard

I. Bio-Retention

1. Description: Cost shall include all material, labor, equipment, etc...to construct the bio-retention basin. This shall include the cost of labor, materials, and any other items associated with this unit item, excluded from this item is the storm structures that are accounted for separately, and the concrete curb surrounding the bio-retention system.
2. Unit of Measurement: Lump Sum

J. Aggregate Base Course

1. Description: Cost shall include all compaction, stone, backfill, labor and installation for this work
2. Unit of Measurement: Ton

K. Concrete Sidewalk

1. Description: Cost shall include all excavation, separation fabric, aggregate base stone, concrete, and reinforcement for the proposed sidewalk.
2. Unit of Measurement: Square Yard

L. Concrete Curb

1. Description: Cost of concrete curb shall include all material, labor, and equipment necessary to install concrete curbing.
2. Unit of Measurement: Liner Feet

M. Asphalt Paving

1. Description: Cost of asphalt paving shall include all material, installation, and labor for this work.
2. Unit of Measurement: Ton

N. Pavement Markings and Signs

1. Description: Cost shall include installing all necessary pavement markings for parking spaces including all necessary handicap markings and signs as shown on plans.
2. Unit of Measurement: Lump Sum

O. Stormwater Inlet

1. Description: Cost shall include inlet structure, excavation, labor, materials, and any necessary work associated with this item. The cost shall also include testing and grouting the inverts and around the pipe.
2. Unit of Measurement: Each

P. 12" Nyloplast Drain

1. Description: Cost shall include inlet structure, excavation, labor, materials, and any necessary work associated with this item. The cost shall also include testing and grouting the inverts and around the pipe.
2. Unit of Measurement: Each

Q. Storm Pipe



1. Description: Cost shall include all pipe, fittings, excavation, backfill, ID Tape, etc. for the storm sewer pipe and tying into existing drainage structures.
  2. Unit of Measurement: Linear Feet
- R. Waterline
1. Description: Cost shall include all pipe, fittings, excavation, backfill, ID Tape, tie-ins, valves, valve box, etc. for the waterline installation.
  2. Unit of Measurement: Linear Feet
- S. Yard Hydrant
1. Description: Cost shall include yard hydrant, excavation, labor, materials, and any necessary work associated with this item. The cost shall also include testing.
  2. Unit of Measurement: Each
- T. Light Pole
1. Description: Cost shall include all material, labor, and equipment to install light poles. Light pole foundation is inclusive to this item.
  2. Unit of Measurement: Each
- U. Electrical Service
1. Description: Cost shall include all labor, material, and equipment to install electrical panel, junction boxes, conduit, and wiring. Tie into power feed and coordination with electric company is inclusive to this item.
  2. Unit of Measurement: Lump Sum

END OF SECTION 012200

PLAN LEGEND

- 940 EXISTING CONTOURS MAJOR / MINOR
- EXISTING EDGE OF CONCRETE
- EXISTING FLOWER BED
- EXISTING OVERHEAD ELECTRIC
- EXISTING WATER LINE
- EXISTING PROPERTY LINE
- EXISTING RAILROAD
- EXISTING SIDEWALK
- EXISTING STORM PIPE
- EXISTING COLUMN
- EXISTING SEWER CLEANOUT
- EXISTING WATER METER
- EXISTING UTILITY POLE
- EXISTING LIGHT POLE
- EXISTING TREE
- EXISTING FIRE HYDRANT
- EXISTING WATER VALVE
- EXISTING MAIL BOX
- EXISTING SIGN
- EXISTING TELEPHONE JUNCTION BOX
- EXISTING SANITARY MANHOLE
- 940 PROPOSED CONTOURS MAJOR / MINOR
- 100 PROPOSED LIMITS OF DISTURBANCE
- PROPOSED BACK OF CURB
- PROPOSED EDGE OF PAVEMENT
- PROPOSED BIORETENTION
- PROPOSED PAVEMENT
- PROPOSED SOD
- PROPOSED MULCH
- PROPOSED SIDEWALK
- PROPOSED CURB CUT DITCH
- PROPOSED INLET
- PROPOSED STORM PIPE
- PROPOSED YARD HYDRANT
- PROPOSED LIGHT POLE

NOTES

1. EXISTING CONTOUR INTERVAL IS ONE FOOT.
2. PROPOSED CONTOUR INTERVAL IS ONE FOOT.
3. CONTRACTOR SHALL PLACE RESERVED PARKING SIGNS ACCORDING TO OWNERS PREFERENCE.

Point Table			
Point #	Raw Description	Northing	Easting
1	L1	6732153.4432	11573194.4058
2	L2	6732169.5000	11573221.0000
3	L3	6732147.5896	11573264.5497
4	L4	6732142.7883	11573324.9088
5	L5	6732156.0000	11573361.0000
6	L6	6732223.5000	11573354.0000
7	L7	6732294.0000	11573320.0000
8	L8	6732344.5000	11573287.0000
9	L9	6732357.0000	11573250.0000
10	L10	6732345.0437	11573197.4613
11	L11	6732311.0000	11573210.0000
12	L12	6732283.0000	11573261.0000
13	L13	6732263.0000	11573222.0000
14	L14	6732229.9068	11573207.8346
15	L15	6732196.5387	11573285.5148
16	L16	6732197.0000	11573310.0000
17	L17	6732228.2079	11573297.3327

LIGHTING NOTES

LUMINAIRES: SPRING CITY ELECTRICAL MFG. CO.  
CATALOG NO. ALMCLW-LE105EV1X2-CW3-YSDP-FCW-CB  
17 EACH

POLES: SPRING CITY ELECTRICAL MFG. CO  
PSWRR-15-12.42-LR  
WARRINGTON WITH LADDER REST  
12'-5" HIGH, 15" DIA. BASE  
17 EACH

POLE FOUNDATION: SEE DETAILS

CONDUIT: 2" SCH. 40 PVC, 825 FT. TOTAL

DISTRIBUTION CABLE: AWG 6, 3 CONDUCTORS, 3135 FT. TOTAL

POLE CABLE: AWG 10, 2 CONDUCTORS, 612 FT. TOTAL

JUNCTION BOX: VDOT JB-S1, 4 EACH



NO. 6 AWG CABLE					
FROM	TO	DISTANCE (FT)	SLACK (FT)	WIRES (EACH)	CABLE LENGTH (FT)
1	PB2	24	10	3	102
2	PB2	14	10	3	72
PB2	3	49	10	3	177
3	4	61	10	3	213
4	5	39	10	3	147
5	PB1	16	10	3	78
15	16	24	10	3	102
17	16	34	10	3	132
16	PB1	56	10	3	198
14	13	49	10	3	177
13	12	46	10	3	168
12	PB4	36	10	3	138
11	PB4	29	10	3	117
PB4	PB3	40	10	3	150
10	9	56	10	3	198
9	PB3	30	10	3	120
PB3	8	19	10	3	87
8	7	60	10	3	210
7	6	78	10	3	264
6	PB1	55	10	3	195
PB1	PANEL	4	10	3	42
PANEL	PS	6	10	3	48
TOTAL 2" SCH. 40 CONDUIT:			825 FT		
TOTAL NO. 6 AWG CABLE:				3135 FT	

NO. 10 AWG POLE AND BRACKET CABLE				
POLE	DISTANCE (FT)	SLACK (FT)	WIRES (EACH)	CABLE LENGTH (FT)
L1	13	5	2	36
L2	13	5	2	36
L3	13	5	2	36
L4	13	5	2	36
L5	13	5	2	36
L6	13	5	2	36
L7	13	5	2	36
L8	13	5	2	36
L9	13	5	2	36
L10	13	5	2	36
L11	13	5	2	36
L12	13	5	2	36
L13	13	5	2	36
L14	13	5	2	36
L15	13	5	2	36
L16	13	5	2	36
L17	13	5	2	36
TOTAL				612

FULL SIZE PLAN SCALE: 1:20  
 LAYOUT TAB: 9-LIGHTING PLAN  
 CAD FILE: R:\030\030-10220-00-Town Of Gordonsville (VA) - Town Hall PA-Town Of Gordonsville - Drawing\10220-Site Plan.dwg  
 PLOT DATE/TIME: 6/10/2022 9:35 AM

THE INFORMATION CONTAINED HEREIN IS THE SOLE PROPERTY OF THE THRASHER GROUP, INC. REPRODUCTION OF THESE DOCUMENTS IN WHOLE OR IN PART, FOR ANY REASON WITHOUT PRIOR WRITTEN PERMISSION, IS STRICTLY PROHIBITED. COPYRIGHT © 2022 THE THRASHER GROUP, INC.

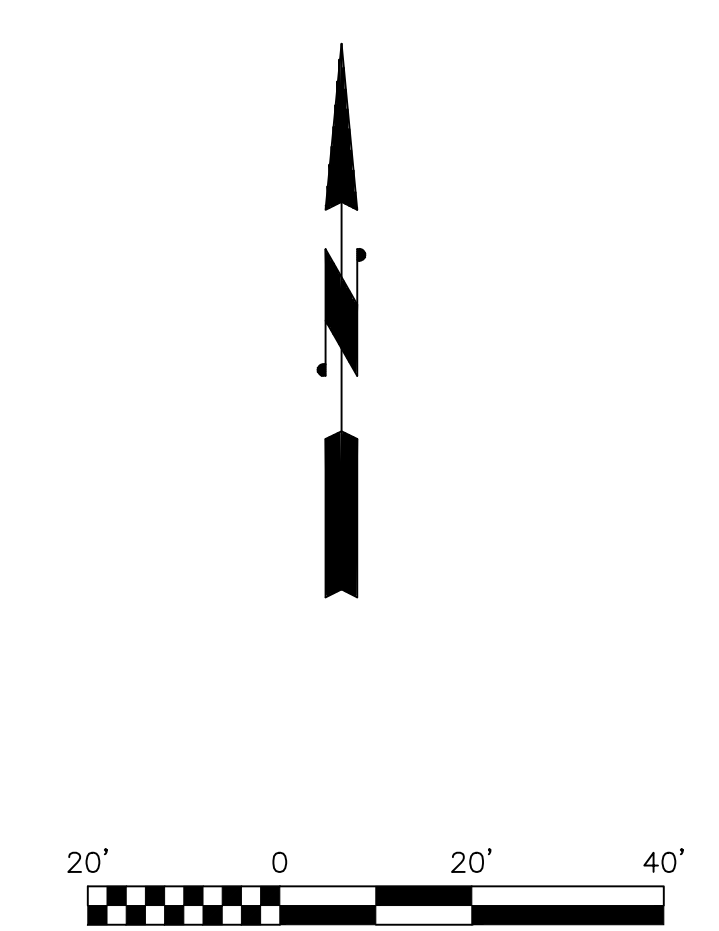
NO.	BY	DATE	DESCRIPTION
2	CMK	6/10/22	REVISED LAYOUT, PROVIDED ADDITIONAL INFORMATION

SCALE: AS SHOWN
DRAWN: DATE:
CHECKED: DATE:
APPROVED: DATE:
SURVEY DATE:
SURVEY BY:
FIELD BOOK No.:

**THRASHER**  
THE THRASHER GROUP INC.  
CIVIL • ENVIRONMENTAL • CONSULTING • FIELD SERVICES  
600 WHITE OAKS BOULEVARD, BRIDGEPORT, WV 26330  
PHONE (304) 624-4108 • FAX (304) 624-7831

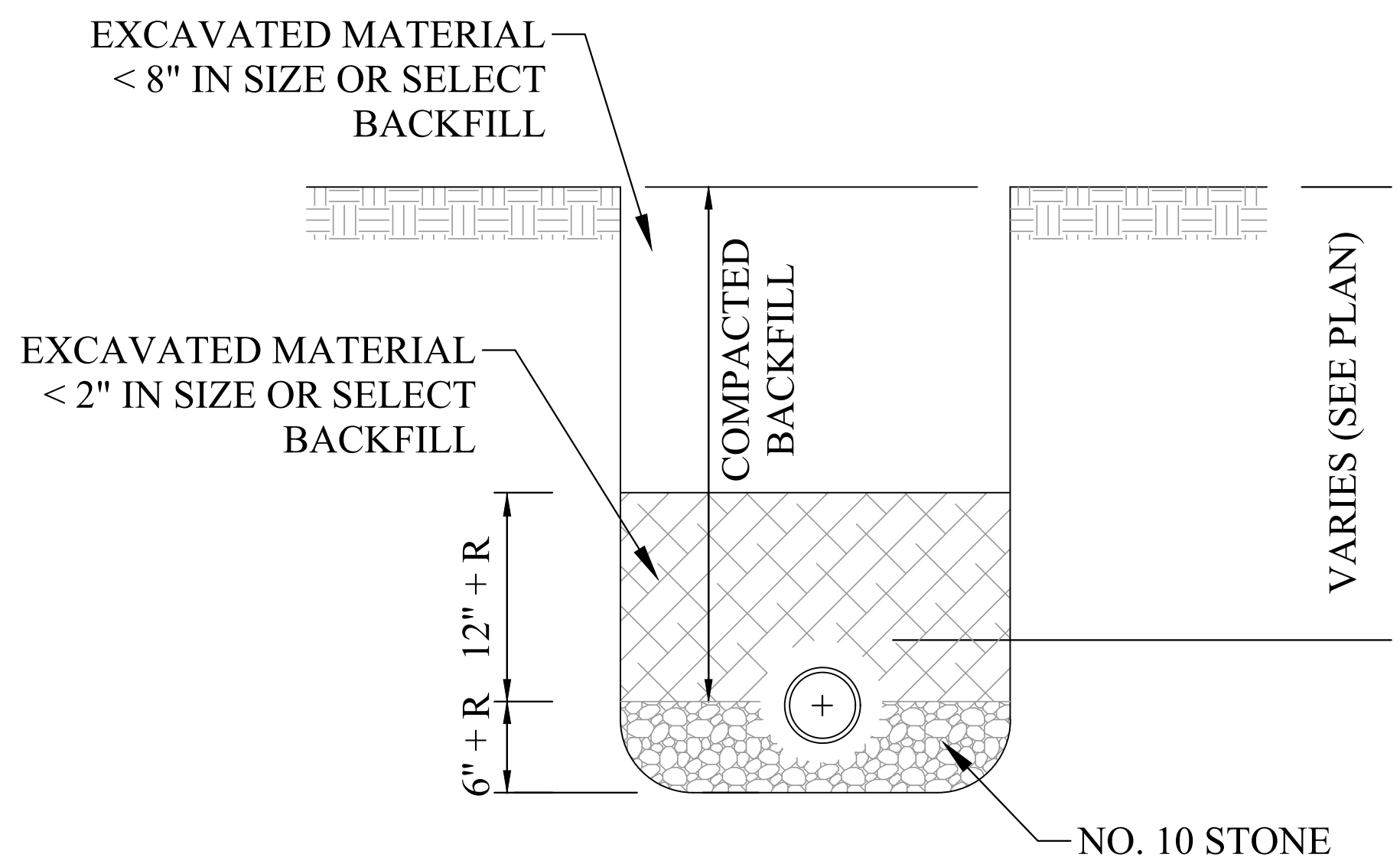
PHASE No.
CONTRACT No.
PROJECT No.
<b>030-10220</b>

TOWN OF GORDONSVILLE  
TOWN HALL SITE RENOVATIONS  
ORANGE COUNTY  
GORDONSVILLE, VIRGINIA  
LIGHTING PLAN





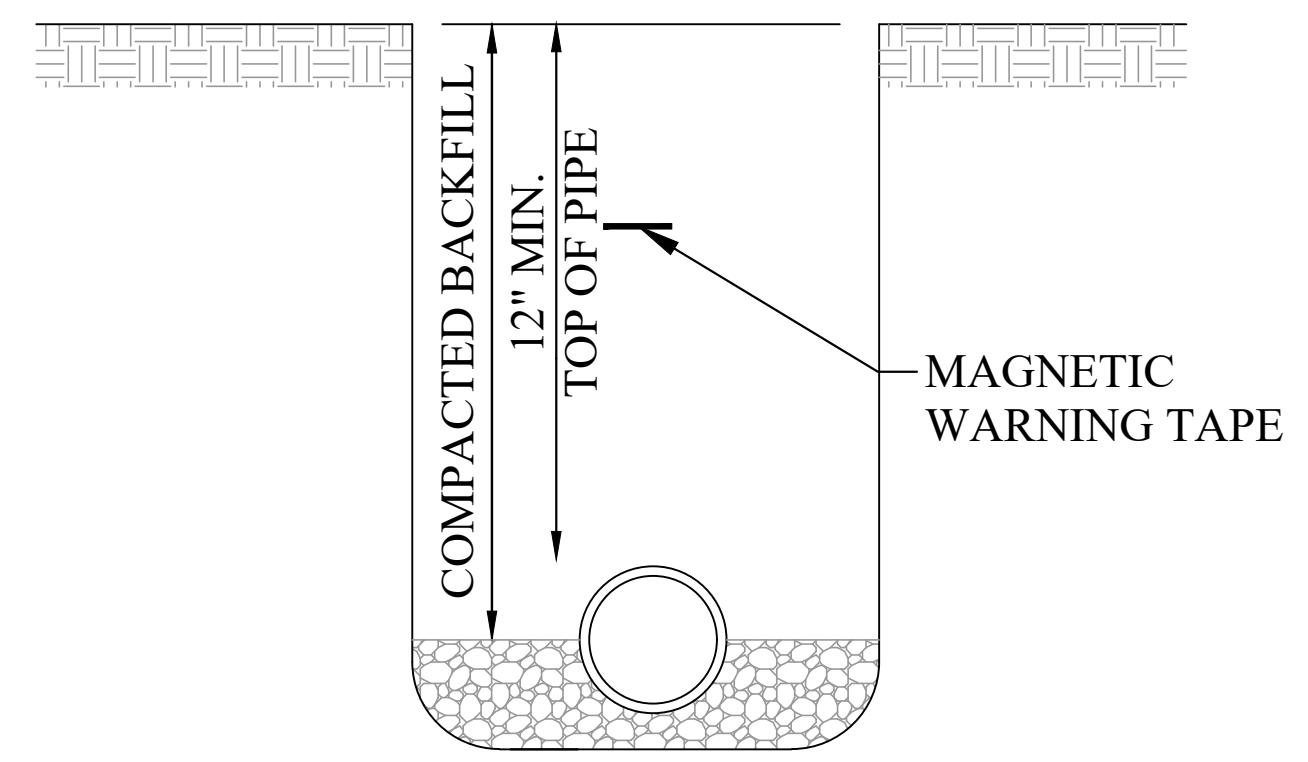
LAYOUT TAB: 13-DETAILS  
 FULL SIZE PLAN SCALE:  
 CAD FILE: R:\030\030-10220-00-Town of Gordonsville-PA-Town Hall PA-Town of Gordonsville-Drawing\10220-Details.dwg  
 PLOT DATE/TIME: 6/10/2022 9:27 AM



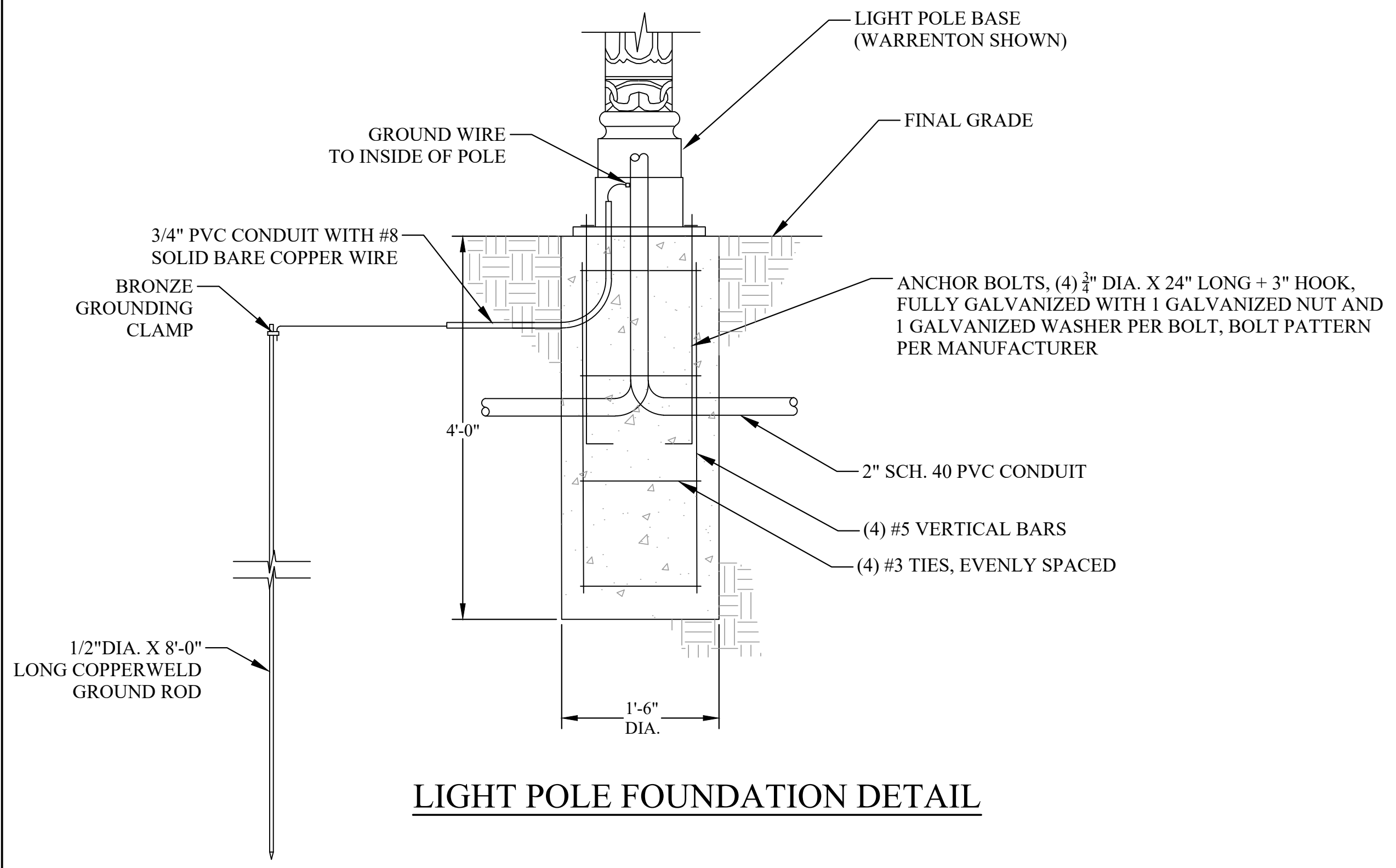
**BEDDING FOR STORM SEWER PIPE**

RED	ELECTRIC
YELLOW	GAS - OIL
ORANGE	TELEPHONE
BLUE	WATER
GREEN	SEWER

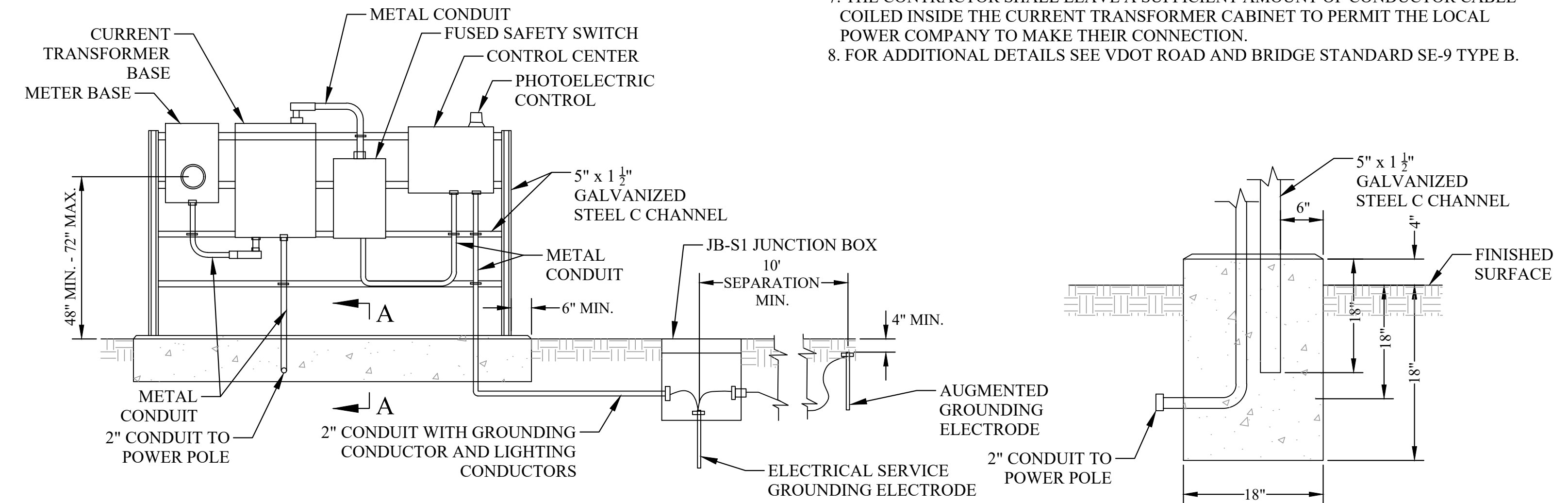
**COLOR CODES FOR UTILITY LOCATING  
MAGNETIC WARNING TAPE**



**ELECTRICAL TRENCH DETAIL**



**LIGHT POLE FOUNDATION DETAIL**



**ELECTRICAL PANEL DETAIL**

- NOTES:
1. ALL ELECTRICAL CONNECTIONS AND SPLICES SHALL BE TESTED FOR ELECTRICAL CONTINUITY.
  2. CONDUIT AND CONDUCTOR SIZE SHALL BE AS SPECIFIED IN THE PLANS.
  3. RIGID METAL RISER CONDUIT AND SERVICE CABLE SHALL BE AS SPECIFIED BY THE LOCAL POWER COMPANY.
  4. SAFETY SWITCH, METER BASE, CURRENT TRANSFORMER CABINET, AND CONTROL CENTER SHALL BE ATTACHED TO THE CHANNELING WITH 3/8" GALVANIZED BOLTS, LOCK WASHERS AND NUTS. FOUR CROSS CHANNELS SHALL BE USED.
  5. MINIMUM 2" METAL CONDUIT SHALL BE STUBBED OUT 6" MAST CONCRETE FOUNDATION. LOCATION OF THE STUBBED CONDUIT SHALL BE AS REQUIRED BY THE LOCAL POWER COMPANY.
  6. LOCAL POWER UTILITY COMPANY WILL INSTALL SERVICE CABLE FROM THEIR POWER SOURCE TO THE CURRENT TRANSFORMER CABINET AND METER BASE THEN MAKE REQUIRED SPLICES TO THE CABLES PROVIDED.
  7. THE CONTRACTOR SHALL LEAVE A SUFFICIENT AMOUNT OF CONDUCTOR CABLE COILED INSIDE THE CURRENT TRANSFORMER CABINET TO PERMIT THE LOCAL POWER COMPANY TO MAKE THEIR CONNECTION.
  8. FOR ADDITIONAL DETAILS SEE VDOT ROAD AND BRIDGE STANDARD SE-9 TYPE B.

THE INFORMATION CONTAINED HEREIN IS THE SOLE PROPERTY OF THE THRASHER GROUP, INC. REPRODUCTION OF THESE DOCUMENTS IN WHOLE OR IN PART, FOR ANY REASON WITHOUT PRIOR WRITTEN PERMISSION, IS STRICTLY PROHIBITED. © 2022 THE THRASHER GROUP, INC.

NO.	BY	DATE	DESCRIPTION
2	JBH	06.09.2022	SHEET ADDED

SCALE: AS SHOWN
DRAWN: DATE:
CHECKED: DATE:
APPROVED: DATE:
SURVEY DATE:
SURVEY BY:
FIELD BOOK No.:

**THRASHER**  
 THE THRASHER GROUP INC.  
 CIVIL • ENVIRONMENTAL • CONSULTING • FIELD SERVICES  
 600 WHITE OAKS BOULEVARD, BRIDGEPORT, WV 26330  
 PHONE (304) 624-4108 • FAX (304) 624-7831

PHASE No.
CONTRACT No.
PROJECT No.
<b>030-10220</b>

TOWN OF GORDONSVILLE  
 TOWN HALL SITE RENOVATIONS  
 ORANGE COUNTY  
 GORDONSVILLE, VIRGINIA  
 DETAILS