

**TAYLOR COUNTY COMMISSION
TAYLOR COUNTY, WEST VIRGINIA
TAYLOR COUNTY HEALTH DEPARTMENT NEW FACILITY**

ADDENDUM #2

MAY 17, 2022

THRASHER PROJECT #060-10186

TO WHOM IT MAY CONCERN:

A Pre-Bid Conference was held on May 5, 2022, on the above-referenced project. The following are clarifications and responses to questions posed by contractors for the above reference project:

A. GENERAL

None on this Addendum

*Note: Additional information added to Question #12.

B. SPECIFICATIONS

1. Index
2. Specification 096723 – Resinous Flooring
3. Specification 096813 – Tile Carpeting

C. DRAWINGS

1. Attachment – Plan Sheet C8, Parking Bumper Detail
2. Attachment – Temp-Gard III Shower Unit
3. Attachment – Accessible Showers – G 6036 BF

D. QUESTIONS AND RESPONSES

QUESTION

1. Drawing C3 could you provide information on the -F- and the -C- labeling? Is this silt fence and compost filter sock?

RESPONSE:

The C and F lines represent the top of cut and toe of fill for the proposed grading.

QUESTION

2. Do all the parking spots to receive parking block/bumpers or just the ones shown?

RESPONSE:

The only spaces to receive parking blocks/bumpers are those shown on the plans.

QUESTION

3. Is there integral curbing on the sidewalk surrounding ADA parking?

RESPONSE:

Yes.

QUESTION

4. Is there an ADA ramp with detectable warning at the ADA parking?

RESPONSE:

No. Detectable warnings are not required for this location.

QUESTION

5. Is there any curbing beyond area in front of building label type 1 curb?

RESPONSE:

No.

QUESTION

6. Are there bollard locations for bollard detail on C6?

RESPONSE:

The bollards are to be installed around the generator and as needed. Allow for 6 to be field located as needed.

QUESTION

7. Can you provide more information/loads for the designing the floor trusses and the roof trusses?

RESPONSE:

Floor trusses are to be designed for 80 psf Live Load, 10 psf bottom chord Dead Load, and 10 psf top chord Dead Load. Base Bid Roof Attic Room Roof Trusses are to be designed for 30 psf Floor Live Load, 30 psf Snow Load, 10 psf bottom chord Dead Load and 10 psf top chord Dead Load. Alternate Bid Standard Roof trusses are to be designed for 30 psf snow load, 7.5 psf bottom chord Dead Load, and 7.5 psf top chord Dead Load

QUESTION

8. Are there details/drawings of the labeled floor trusses and roof trusses?

RESPONSE:

No. These details will be provided in the submittals and shop drawings for the design loads noted in question 7, and the configurations shown on the drawings.

QUESTION

9. Is 5/8 OSB acceptable for roof sheathing?

RESPONSE:

No.

QUESTION

10. Is 5/8 OSB acceptable wall sheathing?

RESPONSE:

No.

QUESTION

11. Are PRE-BUCK Systems acceptable for the ICF openings?

RESPONSE:

Conditionally Yes, but this will require submittals to confirm loading and finishing details prior to final approval.

QUESTION

12. Does restroom 005 receive same toilet accessories as 006 detail 6/A4.01 or are these at a later date?

RESPONSE:

Yes. In addition, Shower Room #003 is to have the same fixtures and accessories as 005 & 006, plus an acrylic or fiberglass shower unit with curtain rod. The Shower Room was omitted from the Ground Floor Plan, but it is similar to the layouts shown on the Plumbing Plan. P1.03 Refer to Drawing P5.01, Shower Rom 003: shower shall be tagged SH-1H.

- A. Refer to Room Shower 003, shower shall be tagged SH-1H. Plumbing Fixture Schedule Addition: (See Attached cut sheet).
- B. Sh-1h – Aquarius G 6036 Bf; Standard Finish – Polyester Gelcoat White; 2” Threshold, Center Drain; S-Bar – 24”X1.5” Smooth Ss; Standard Seat 28.5”X21” White Frameless HDPE Fold Up Seat; Provide Zurn Z7300-Ss-Mt-Hw-H9 Single Handle Pressure Balancing Mixing Shower Unit, Ceramic Control Cartridge with Stainless Steel Balancing Piston, Two Service Stops, Polished Nickel Chrome Plated Surface, 60” Flexible Metal Hose, 24” Mounting Bar, Supply Elbow and Flange.

QUESTION

13. Is there a specification for the overhead door?

RESPONSE:

The only specification is the make and model number show on Door Type 8 on Drawing A6.01. All work must be installed in compliance with the manufacturer’s requirements for the given conditions.

QUESTION

14. Are the appliance on A4.01 in our scope? IF so, is there a specification or BOD?

RESPONSE:

Appliances will be provided by the Owner, including refrigerators, ranges, range hood, disposals, microwaves, and similar typical residential appliances. Utility rough-ins and appliance installations are by the General Contractor.

QUESTION

15. Print A1.02 Board Room 122 – note refer to A3.02 for custom woodwork requirements. Could this be clarified? Is this the wood window sills and aprons – could a detail be provided?

RESPONSE:

The intent to be complied with for the Board Room is to provide an above average level of custom woodwork for various types of community and health department meetings. A high level of woodworking and finishing is expected. The wood may be custom grade oak, maple, walnut, or birch, depending on what is available at the time of construction, but it must be done to woodworking standards. The only details are what is shown on A3.02.

QUESTION

16. Is there a detail of the wood base, casing and window sill/apron in board room?

RESPONSE:

See answer for question 15.

QUESTION

17. Is the custom woodworking for all windows on second floor? Only window details (sill, jamb, head) are for ICF walls?

RESPONSE:

No. Custom woodwork is only for the Conference Room. All other windows will have painted drywall head and jamb returns and cultured marble (Corian or similar) sills.

QUESTION

18. Could you provide information on the windows in Reception 105?

RESPONSE:

The window wall framing is to be standard mil finish Kawneer or YKK 2"x 4" storefront framing with 1/4" tempered glass. The full width painted drywall header will require a box beam lintel made up of (2) 2x8s with 2x4 top and bottom plates. Aluminum frames will set on a full width thru wall plastic laminate countertop.

QUESTION

19. Do main floor windows get marble sills?

RESPONSES:

Yes. See question 17.

QUESTION

20. Would composite trim (Azek) be acceptable to the aluminum wrapped 1x4 at the window/door perimeter?

RESPONSE:

Yes. Installations must be well aligned and sealed for both appearance and weather tightness.

QUESTION

21. Drawing A2.02 calls out 4" vinyl cornice trim typ. is there a detail or BOD for this?

RESPONSE:

4" trim for cornice work, corners, edges or other siding trim work will need to be aluminum wrapped 1x boards unless an acceptable alternate is submitted. The purpose of the trim is both for improved aesthetics and good weather protection.

QUESTION

22. Is there a specification for the epoxy flooring for shower 003 per A601 or a BOD?

RESPONSE:

See attached Specification Section 096723 – Resinous Flooring.

QUESTION

23. Is there a specification for the carpet flooring or a BOD?

RESPONSE:

See attached Specification Section 096813 – Tile Carpeting.

QUESTION

24. Due to the volatility of the asphalt market, can the asphalt index formula that the WVDOH uses or some other method of adjusting for any increases?

RESPONSE:

No. This project has no provisions for price increases or decreases.

QUESTION

25. Are parking blocks in GC package? If so, what type do you want to use?

RESPONSE:

Yes. Concrete parking blocks per the detail shown on the attached sheet. Also see question 2.

QUESTION

26. Please identify where curbs are.

RESPONSE:

Type I concrete curb shall be installed along the drive entrance beginning at the sidewalk adjacent to the ADA parking stalls southwest to where the stairs end at the parking area at the rear of the building. Also see question 3.

QUESTION

27. I see a detail for detectable warning surface, but don't see a location on the civil drawing.

RESPONSE:

The detectable warning surface detail is not applicable to this project. Also see question 4.

QUESTION

28. Are there any site sign details?

RESPONSE:

The site sign will be by others. The GC shall install conduit to the sign location as shown in the MEP plans.

QUESTION

29. Architectural drawings call for 8mm VB under the slab but structural calls for 10mm.

RESPONSE:

Use 8 mm Vapor Barrier under concrete slabs. Also lap and tape joints to insure a good seal.

QUESTION

30. Can you clarify window sills on the first floor. I see that board room gets wood but if det alt 5 is taken then we are to go with marble. I don't see marble or wood on any other windows on the first floor.

RESPONSE:

Refer to question 15. All windows other than the Board Room will require cultured marble or Corian type sills.

QUESTION

31. The 12"x12" C.I. truck grate in the trailer storage is not shown on the plumbing prints. Could you clarify?

RESPONSE:

Change the 12 x12 drain to the same 2" FD-B scheduled on Plumbing Drawing P5.01 and add the 2" drain line to the main line in the Corridor.

If you have any questions or comments, please contact Tesla Smith
tdsmith@thethrashergroup.com at your earliest convenience. As a reminder, Bids will be
received until 2:00 p.m. on Thursday May 26, 2022, at The Thrasher Group, Inc., located at 600
White Oaks Blvd. Bridgeport WV 26330. Please be sure to comply with ALL Bid Opening
Requirements for the 2 Envelope Bidding Procedures. Good luck to everyone and thank you for
your interest in the project.

Sincerely,

THE THRASHER GROUP, INC.



Lee Gustafson, Architect AIA
Project Architect



Enclosures: Index
Specification 096723 – Resinous Flooring
Specification 096813 – Tile Carpeting
Attachment – Plan Sheet C8, Parking Bumper Detail
Attachment – Temp-Gard III Shower Unit
Attachment – Accessible Showers – G 6036 BF

**TAYLOR COUNTY COMMISSION
TAYLOR COUNTY, WEST VIRGINIA
FOR THE
GRAFTON – TAYLOR COUNTY HEALTH DEPARTMENT NEW
FACILITY
THRASHER #060-10186**

INDEX

BIDDING DOCUMENTS

Advertisement for Bid	AFB
Instructions to Bidders	A701- 1997
Bid Opening Requirements	BOR
Bid	BID

CONDITIONS OF WORK

Standard Form of Agreement between Owner and Contractor	A101 - 2017
Performance Bond	A312- 2010
Payment Bond	A312- 2010
Change Order Directive	G714 - 2017
Change Order	G701- 2018
Application and Certificate for Payment	G702- 1992
Continuation Sheet	G703- 1992
Certificate of Substantial Completion	G704- 2017
Consent of Surety to Final Payment	G707- 1994
Consent of Surety to Reduction in or Partial Release of Retainage	G707A- 1994

GENERAL CONDITIONS

General Conditions of the Contract for Construction	A201 – 2007
Supplementary General Conditions	SGC
Community Development Block Grant	HUD
Davis Bacon Contract Requirements	DB
FEMA Community Status	FEMA

SPECIFICATIONS

Summary	011000
Standards, Inspections, And Reports	012000
Alternates	012300
Contract Modification Procedures	012600
Payment Procedures	012900
Submittals & Substitutions	013000
Construction Progress Documentation	013200
Quality Requirements	014000
References	014200
Temporary Facilities and Controls	015000
Product Requirements	016000
Execution	017300
Construction Waste Management and Disposal	017419
Closeout Procedures	017700
Operation And Maintenance Data	017823
Project Record Documents	017839

Drainage Aggregate	025860
Concrete Forming and Accessories	031000
Concrete Reinforcing	032000
Miscellaneous Cast-in-place Concrete	033053
Unit Masonry Work	042000
Manufactured Stone Veneer	047300
Carpentry	061000
Sheathing	061600
Shop Fabricated Wood Trusses	061753
Architectural Woodwork	062000
Bituminous Dampproofing	071113
Self-adhering Sheet Waterproofing	071326
Vapor Barriers	072000
Thermal Insulation	072100
Weather Barriers	072500
Gutters, Downspouts, Soffit, And Fascia Systems	073000
Metal Soffit Panels	074213.53
Plastic Siding	074633
Roofing	075000
Flashing And Sheet Metal	077000
Joint Sealants	079200
Acoustical Joint Sealants	079219
Hollow Metal Doors and Frames	081113

Flush Wood Doors	081416
Aluminum-framed Entrances	084213
Fiberglass Windows	085413
Door Hardware	087100
Gypsum Board	092900
Painting	095000
Resilient Base and Accessories	096513
Resilient Sheet Flooring	096516
Resilient Tile Flooring	096519
Acoustical Ceilings	097000
Hollow Metal Doors and Frames	081113
Flush Wood Doors	081416
Aluminum-framed Entrances	084213
Fiberglass Windows	085413
Door Hardware	087100
Gypsum Board	092900
Painting	095000
Resilient Base and Accessories	096513
Resilient Sheet Flooring	096516
Resilient Tile Flooring	096519
*Resinous Flooring	096723
*Tile Carpeting	096813

Acoustical Ceilings	079219
Toilet Accessories	101000
Portable Fire Extinguishers	103000
Cabinetry	111000
Elevator Specifications	142400
Wet-pipe Fire-suppression Sprinklers	211313
Common Work Results For Plumbing	220511
Meters And Gages For Plumbing Piping	220519
General-duty Valves For Plumbing Piping	220523
Hangers And Supports For Plumbing Piping And Equipment	220529
Identification For Plumbing Piping And Equipment	220553
Plumbing Insulation	220719
Facility Water Distribution Piping	221113
Domestic Water Piping	221116
Domestic Water Piping Specialties	221119
Facility Sanitary Sewers	221313
Drainage Waste and Vent Piping	221316
Sanitary Waste Piping Specialties	221319
Sanitary Waste Interceptors	221323
Plumbing Fixtures	224213
Common Work Results for HVAC	230511
Common Motor Requirements for HVAC Equipment	230513
Hangers And Supports for HVAC Piping and Equipment	230529

Identification For HVAC Piping and Equipment	230553
Testing, Adjusting, And Balancing	230593
HVAC Insulation	230713
Metal Ducts	233113
Duct Accessories	233300
Power Ventilators	233423
Diffusers, Registers, And Grilles	233713
Split-system Air-conditioners	238126
Unit Heaters	238239
Common Work Results for Electrical	260500
Low-voltage Electrical Power Conductors and Cables	260519
Grounding And Bonding for Electrical Systems	260526
Hangers And Supports for Electrical Systems	260529
Raceway And Boxes for Electrical Systems	260533
Identification For Electrical Systems	260553
Lighting Control Devices	260923
Panelboards	262416
Wiring Device	262726
Fuse	262813
Enclosed Switches	262816
Natural Gas Generator	263213.18
Automatic Transfer Switches	263600

Pathways for Communication Systems	270528
Fire Alarm Systems	283111
Site Clearing	311000
Earth Moving	312000
Dewatering	312319
Erosion And Sedimentation Controls	312500
Asphalt Paving	321216
Concrete Paving	321313
Concrete Paving Joint Sealants	321373
Pavement Markings	321723
Common Work Results for Utilities	330500
Disinfecting Of Water Utility Distribution	331300
Stormwater Conveyance	334200
Subdrainage	334600
Federal Wage Rates	

SECTION 096723 - RESINOUS FLOORING

PART 1 - GENERAL

1.1 SUMMARY

A. Section Includes:

1. High Performance Resinous flooring with 6" coved base systems and High Performance Resinous Wall Systems for moisture control for:
 - a. Concrete Slabs on Grade.
 - b. Fiber Cement Board Wall.
 - c. Epoxy Wall Coatings

1.2 PREINSTALLATION MEETINGS

A. Preinstallation Conference: Conduct conference at Project site.

1.3 REFERENCES

A. ASTM International:

1. ASTM D 3359 - Standard Test Methods for Measuring Adhesion.
2. ASTM D 4258 - Standard Practice for Cleaning Concrete.
3. ASTM D 4259 - Standard Practice for Abrading Concrete.
4. ASTM D 4260 - Standard Practice for Etching Concrete.
5. ASTM F 1869 - Moisture Test by use of Calcium Chloride.
6. ASTM F 2170 - InSitu Probe Moisture Test.

B. The Society for Protective Coatings (SSPC):

1. SSPC-SP 1 - Solvent Cleaning.
2. SSPC-SP 2 - Hand Tool Cleaning.
3. SSPC-SP 3 - Power Tool Cleaning.
4. SSPC-SP 13 / NACE No. 6 Surface Preparation for Concrete.

C. International Concrete and Repair Institute (ICRI): ICRI Guideline # 310-2-1997.

D. Sherwin Williams/General Polymers Form G-1 Guide (Revised 1/12): Instructions for concrete surface preparation.

1.4 INFORMATIONAL SUBMITTALS

A. Material certificates.

- B. Material test reports.

1.5 SUBMITTALS

- A. Product data.
- B. Maintenance date for closeout.
- C. Samples for initial color selection for each finish that represent texture, color, and sheen.

1.6 QUALITY ASSURANCE

- A. Installer Qualifications: An authorized, experienced representative who is trained and approved in writing by manufacturer.

1.7 FIELD CONDITIONS

- A. Environmental Limitations: Comply with resinous flooring manufacturer's written instructions for substrate temperature, ambient temperature, moisture, ventilation, and other conditions affecting resinous flooring application.
- B. Lighting: Provide permanent lighting or, if permanent lighting is not in place, simulate permanent lighting conditions during resinous flooring application.
- C. Close spaces to traffic during resinous flooring application and for 24 hours after application unless manufacturer recommends a longer period. May not be open to more than light foot traffic for at least three days.

- 1.8 Delivery, Storage and Handling – Comply with Manufacturer’s Requirements for Product Protection, Handling, Application, and Health and Safety Information.

PART 2 - PRODUCTS

2.1 PERFORMANCE REQUIREMENTS

- A. Flammability: Self-extinguishing according to ASTM D635.

2.2 RESINOUS FLOORING – EPOXY (as scheduled on drawings)

- A. Basis of Design Product:
 - 1. Sherwin Williams/ General Polymers

- a. Ceramic Carpet #400 Decorative Broadcast
 - B. Resinous Flooring System: A 1/8" flooring system with decorative colored quartz aggregates, high solids epoxy resins and chemical resistant grout and topcoats that form a protective surfacing system designed to produce a seamless, slip resistant floor with an integrated resinous cove base.
1. Manufacturers: Subject to compliance with requirements, provide products by one of the following:
 - a. Sherwin Williams.
 - b. Architect approved equivalent.
- C. System Characteristics:
 1. Color and Pattern: As selected by Architect from manufacturer's full range. Allow for a maximum of 3 color selections from manufacturer standards in approved submittals.
 2. Wearing Surface: Textured for slip resistance suitable for wet Shower Room and Kitchen floors. Resistant to wear, staining and chemicals. Final texture to be selected by owner from manufacturer's texture bar.
 3. Overall System Thickness: 1/8".
 - D. Primer: Type recommended by resinous flooring manufacturer for substrate and resinous flooring system indicated.
 - E. Reinforcing Membrane: Flexible resin formulation that is recommended by resinous flooring manufacturer.
 - a. Provide fiberglass scrim embedded in reinforcing membrane.
 - F. Patching and Fill Material: Resinous product of or approved by resinous flooring manufacturer and recommended by manufacturer for application indicated.
 - G. Body Coats:
 1. Resin: Epoxy.
 2. Formulation Description: 100 percent solids.
 3. Type: Pigmented.
 4. Application Method: Self-leveling slurry with broadcast aggregates.
 5. Number of Coats: Two.
 6. Thickness of Coats: 1/16" each nominal thickness.
 7. Aggregates: Manufacturer's standard.
 - H. Topcoats: Sealing or finish coats.
 1. Resin: Polyaspartic.
 2. Formulation Description: >94% percent solids.
 3. Type: Pigmented.

4. Slip resistant aggregate: Manufacturer's standard Polypropylene Grit, suitable for wet Shower Room and Commercial Kitchen floors.
5. Number of Coats: Two.
6. Thickness of Coats: 8 mils.
7. Finish: Gloss.

- I. System Physical Properties: Provide resinous flooring system with the following minimum physical property requirements when tested according to test methods indicated:

1. Compressive Strength: Minimum according to ASTM C579.
2. Tensile Strength: Minimum according to ASTM C307.
3. Flexural Modulus of Elasticity: Minimum according to ASTM C580.
4. Water Absorption: Maximum according to ASTM C413.

PART 3 - EXECUTION

3.1 PREPARATION

- A. Prepare and clean substrates according to resinous flooring manufacturer's written instructions for substrate indicated. Provide clean, dry substrate for resinous flooring application.
 - B. Concrete Substrates: Provide sound concrete surfaces free of laitance, glaze, efflorescence, curing compounds, form-release agents, dust, dirt, grease, oil, and other contaminants incompatible with resinous flooring.
1. Roughen concrete substrates as follows:
 - a. Shot-blast surfaces with an apparatus that abrades the concrete surface, contains the dispensed shot within the apparatus, and recirculates the shot by vacuum pickup.
 - b. Comply with NACE No. 6/SSPC-SP13, with a Concrete Surface Profile (CSP) of 4-6 or greater in accordance with International Concrete Repair Institute (ICRI) Technical Guideline No. 310.2R, unless manufacturer's written instructions are more stringent.
 2. Repair damaged and deteriorated concrete according to resinous flooring manufacturer's written instructions.
 3. Verify that concrete substrates are dry and moisture-vapor emissions are within acceptable levels according to manufacturer's written instructions.
 - a. Anhydrous Calcium Chloride Test: ASTM F1869. Proceed with application of resinous flooring only after substrates have maximum moisture-vapor-emission rate of 3 lb of water/1000 sq. ft. of slab area in 24 hours.
 - b. Relative Humidity Test: Use in situ probes, ASTM F2170. Proceed with installation only after substrates have a maximum 75 percent relative humidity level measurement.

4. Alkalinity and Adhesion Testing: Verify that concrete substrates have pH within acceptable range. Perform tests recommended by manufacturer. Proceed with application only after substrates pass testing.
 - C. Patching and Filling: Use patching and fill material to fill holes and depressions in substrates according to manufacturer's written instructions.
 - D. Resinous Materials: Mix components and prepare materials according to resinous flooring manufacturer's written instructions.

3.2 INSTALLATION

- A. Apply components of resinous flooring system according to manufacturer's written instructions to produce a uniform, monolithic wearing surface of thickness indicated.
1. Expansion and Isolation Joint Treatment: At substrate expansion and isolation joints, comply with resinous flooring manufacturer's written instructions.
 - B. Primer: Apply primer over prepared substrate at manufacturer's recommended spreading rate.
 - C. Reinforcing Membrane: Apply reinforcing membrane to substrate cracks.
 - D. Self-Leveling Body Coats: Apply self-leveling slurry body coats in thickness indicated for flooring system.
1. Aggregates: Broadcast aggregates at rate recommended by manufacturer and, after resin is cured, remove excess aggregates to provide surface texture indicated.
 - E. Troweled or Screeded Body Coats: Apply troweled or screeded body coats in thickness indicated for flooring system. Hand or power trowel and grout to fill voids. When body coats are cured, remove trowel marks and roughness using method recommended by manufacturer.
 - F. Grout Coat: Apply grout coat, of type recommended by resinous flooring manufacturer, to fill voids in surface of final body coat.
 - G. Topcoats: Apply topcoats in number indicated for flooring system and at spreading rates recommended in writing by manufacturer and to produce wearing surface indicated.
 - H. Protect resinous flooring from damage and wear during the remainder of construction period.

3.3 SCHEDULE OF FLOORING SYSTEMS

- A. Paragraphs below identify specific floor coating materials and appropriate specified systems as indicated on Drawings.
- B. Basis-of-Design: Sherwin-Williams/General Polymers product names and numbers refer to those manufactured by The Sherwin-Williams Company.
- C. Decorative Quartz Broadcast: **Ceramic Carpet #400.** *Moisture Testing Required. CSP 4-6
 - 1. Primer: 3579 Standard Epoxy Primer/Sealer. Applied at 250 sq. ft./gal.
Note: GP Resuprime is also acceptable if moisture testing results require the use of an MVT Primer.
 - 2. Broadcast Coat 3561 Resin with 5900F Quartz Aggregate.
Second Broadcast: 3561 Resin with 5900F Quartz Aggregate
 - 3. Grout: 3746 High Performance Epoxy .
 - 4. Topcoat: 3746 High Performance Epoxy .
(Optional Topcoat:) 4410 Aquarmor Water-Based Urethane

*Specifier Note: the thickness of topcoat along with an optional non-slip additive can be used to produce a more aggressive or less aggressive texture. These should be evaluated with current cleaning protocols used by the owner/facility to assure texture is acceptable.

3.4 SCHEDULE OF HIGH PERFORMANCE WALL SYSTEMS

- A. Paragraphs below identify specific HIGH PERFORMANCE WALL coating materials and appropriate specified systems as indicated on Drawings.
- B. Gypsum Board Substrates in Kitchen Areas, and Cement Board Substrates in Shower Rooms.
- C. Basis-of-Design: Sherwin-Williams/General Polymers product names and numbers refer to those manufactured by The Sherwin-Williams Company.
- D. High Build Wall System: **General Polymers SaniGlaze High Build Wall System**
 - *Fill any bug holes with appropriate patching material
 - 1. Primer: 3479 Water Based Epoxy Wall Coating. Applied at 300-350 sq. ft./gal.
 - 2. Base Coat(s): 2 coats 3479 Water Based Epoxy Wall Coating. Applied at 300-350 sq. ft./gal.
Topcoat: 4410 Aquarmor Water-Based Urethane. Applied at 400-500 sq. ft./gal.
- E. Gypsum Board Substrates In Kitchen Areas, and Cement Board Subtrates In Shower Rooms:
 - 1. Water Based Epoxy Base Coats w/ Polyurethane Finish Coat:
 - a. Prime Coat
 - b. Base Coat 1
 - c. Base Coat 2
 - d. Finish Coat

END OF SECTION 096723

This page is intentionally blank.

SECTION 096813 - TILE CARPETING

PART 1 - GENERAL

1.1 SUMMARY

- A. Section includes modular carpet tile.

1.2 PREINSTALLATION MEETINGS

- A. Preinstallation Conference: Conduct conference at Project site.

1.3 ACTION SUBMITTALS

- A. Product Data: For each type of product.
- B. Sustainable Design Submittals:
- C. Shop Drawings: For carpet tile installation, plans showing the following:
 - 1. Columns, doorways, enclosing walls or partitions, built-in cabinets, and locations where cutouts are required in carpet tiles.
 - 2. Carpet tile type, color, and dye lot.
 - 3. Type of subfloor.
 - 4. Type of installation.
 - 5. Pattern of installation.
 - 6. Pattern type, location, and direction.
 - 7. Pile direction.
 - 8. Type, color, and location of edge, transition, and other accessory strips.
 - 9. Transition details to other flooring materials.
- D. Samples: For each exposed product and for each color and texture required.

1.4 INFORMATIONAL SUBMITTALS

- A. Product test reports.
- B. Sample warranty.

1.5 CLOSEOUT SUBMITTALS

- A. Maintenance data.

1.6 QUALITY ASSURANCE

- A. Installer Qualifications: Certified by the International Certified Floorcovering Installers Association at the Commercial II certification level.

1.7 WARRANTY

- A. Special Warranty for Carpet Tiles: Manufacturer agrees to repair or replace components of carpet tile installation that fail in materials or workmanship within specified warranty period.
 - 1. Warranty Period: 10 years from date of Substantial Completion.

PART 2 - PRODUCTS

2.1 CARPET TILE (as scheduled on drawings)

- A. Basis of Design Product:
 - 1. Patcraft: a division of Shaw Industries, Inc.
 - a. Construkt Collection; Style: Intrinsic Z6474
- B. Manufacturers: Subject to compliance with requirements, provide products by the following:
 - 1. Patcraft; a division of Shaw Industries, Inc.
 - 2. Shaw Contract Group; a Berkshire Hathaway company.
 - 3. Tandus; a Tarkett company.
 - 4. Mohawk Group (The); Mohawk Carpet, LLC
- C. Color: As selected by Architect from manufacturer's full range.
 - 1. Allow for a maximum of 3 color selections to be selected from manufacturer standards in approved submittals.
- D. Pattern: Monolithic.
- E. Fiber Content: 100 percent nylon 6, 6.
- F. Pile Characteristic: Multi-Level Pattern loop pile.
- G. Yarn Count: 9.1.
- H. Density: 5058 oz./cu. yd..
- I. Pile Thickness: 0.121 for finished carpet tile.
- J. Stitches: 9.0
- K. Gage: 1/12.
- L. Surface Pile Weight: 17 oz./sq. yd..

- M. Primary Backing/Backcoating: Manufacturer's standard composite materials.
- N. Secondary Backing: Manufacturer's standard material.
- O. Size: 24 by 24 inches.
- P. Applied Treatments:
 - 1. Soil-Resistance Treatment: Manufacturer's standard treatment.
 - 2. Antimicrobial Treatment: Manufacturer's standard treatment that protects carpet tiles as follows:
 - a. Antimicrobial Activity: Not less than 2-mm halo of inhibition for gram-positive bacteria, not less than 1-mm halo of inhibition for gram-negative bacteria, and no fungal growth, according to AATCC 174.
- Q. Performance Characteristics:
 - 1. Appearance Retention Rating: Heavy traffic, 3.0 minimum according to ASTM D 7330.
 - 2. Critical Radiant Flux Classification: Not less than 0.22 W/sq. cm according to NFPA 253.
 - 3. Dry Breaking Strength: Not less than 100 lbf according to ASTM D 2646.
 - 4. Tuft Bind: Not less than 8 lbf according to ASTM D 1335.
 - 5. Delamination: Not less than 2.5 lbf/in. according to ASTM D 3936.
 - 6. Dimensional Tolerance: Within 1/32 inch of specified size dimensions, as determined by physical measurement.
 - 7. Dimensional Stability: 0.2 percent or less according to ISO 2551 (Aachen Test).
 - 8. Colorfastness to Crocking: Not less than 4, wet and dry, according to AATCC 165.
 - 9. Colorfastness to Light: Not less than 4 after 60 AFU (AATCC fading units) according to AATCC 16, Option E.
- R. Electrostatic Propensity: Less than 3.5 kV according to

2.2 INSTALLATION ACCESSORIES

- A. Trowelable Leveling and Patching Compounds: Latex-modified, hydraulic-cement-based formulation provided or recommended by carpet tile manufacturer.
- B. Adhesives: Water-resistant, mildew-resistant, nonstaining, pressure-sensitive type to suit products and subfloor conditions indicated, that comply with flammability requirements for installed carpet tile, and are recommended by carpet tile manufacturer for releasable installation.

PART 3 - EXECUTION

3.1 EXAMINATION

- A. Concrete Slabs:

1. Moisture Testing: Perform tests so that each test area does not exceed 200 sq. ft. (18.6 sq. m), and perform no fewer than three tests in each installation area and with test areas evenly spaced in installation areas.
 - a. Anhydrous Calcium Chloride Test: ASTM F 1869. Proceed with installation only after substrates have maximum moisture-vapor-emission rate of 3 lb of water/1000 sq. ft. (1.36 kg of water/92.9 sq. m) in 24 hours.
 - b. Relative Humidity Test: Using in situ probes, ASTM F 2170. Proceed with installation only after substrates have a maximum 75 percent relative humidity level measurement.
 - c. Perform additional moisture tests recommended in writing by adhesive and carpet tile manufacturers. Proceed with installation only after substrates pass testing.

3.2 PREPARATION

- A. General: Comply with CRI's "CRI Carpet Installation Standards" and with carpet tile manufacturer's written installation instructions for preparing substrates indicated to receive carpet tile.
- B. Use trowelable leveling and patching compounds, according to manufacturer's written instructions, to fill cracks, holes, depressions, and protrusions in substrates. Fill or level cracks, holes and depressions 1/8 inch (3 mm) wide or wider, and protrusions more than 1/32 inch (0.8 mm) unless more stringent requirements are required by manufacturer's written instructions.
- C. Concrete Substrates: Remove coatings, including curing compounds, and other substances that are incompatible with adhesives and that contain soap, wax, oil, or silicone, without using solvents. Use mechanical methods recommended in writing by adhesive and carpet tile manufacturers.
- D. Broom and vacuum clean substrates to be covered immediately before installing carpet tile.

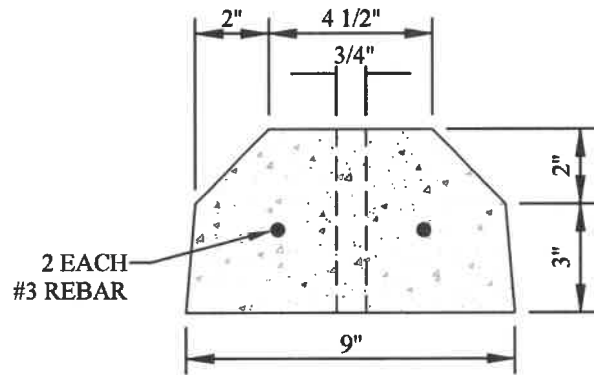
3.3 INSTALLATION

- A. General: Comply with CRI's "CRI Carpet Installation Standard," Section 18, "Modular Carpet" and with carpet tile manufacturer's written installation instructions.
- B. Installation Method: As recommended in writing by carpet tile manufacturer.
- C. Maintain dye-lot integrity. Do not mix dye lots in same area.
- D. Maintain pile-direction patterns recommended in writing by carpet tile manufacturer.
- E. Cut and fit carpet tile to butt tightly to vertical surfaces, permanent fixtures, and built-in furniture including cabinets, pipes, outlets, edgings, thresholds, and nosings. Bind or seal cut edges as recommended by carpet tile manufacturer.
- F. Extend carpet tile into toe spaces, door reveals, closets, open-bottomed obstructions, removable flanges, alcoves, and similar openings.

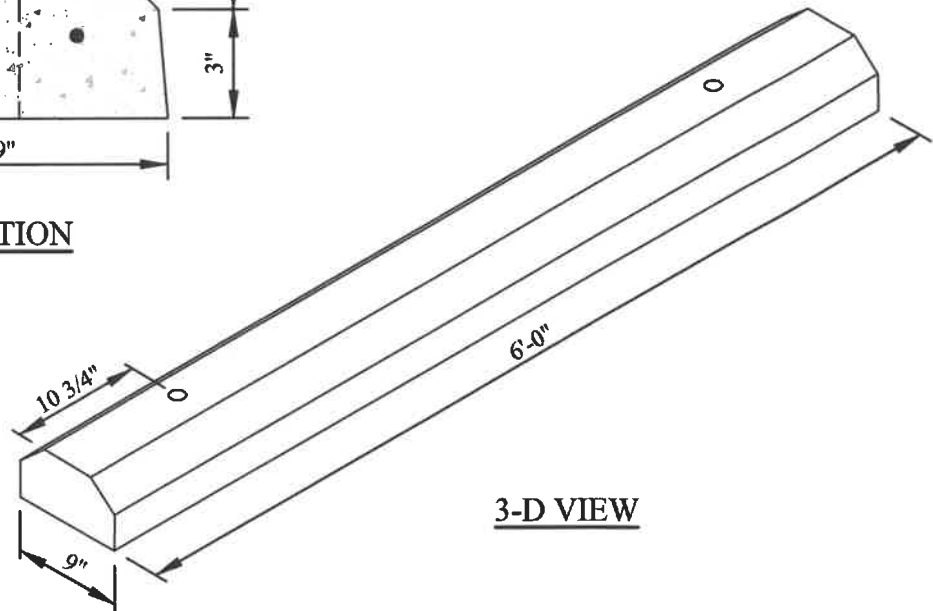
- G. Maintain reference markers, holes, and openings that are in place or marked for future cutting by repeating on carpet tile as marked on subfloor. Use nonpermanent, nonstaining marking device.
- H. Install pattern parallel to walls and borders.
- I. Access Flooring: Stagger joints of carpet tiles so carpet tile grid is offset from access flooring panel grid. Do not fill seams of access flooring panels with carpet adhesive; keep seams free of adhesive.
- J. Protect carpet tile against damage from construction operations and placement of equipment and fixtures during the remainder of construction period. Use protection methods indicated or recommended in writing by carpet tile manufacturer.

END OF SECTION 096813

This page is intentionally blank.



SECTION



3-D VIEW

NOTES:

1. REBAR AMERICAN GRADE 60 SIZE #3
2. 3000 PSI OR GREATER
3. WEIGHT 200 POUNDS

CONCRETE PARKING BUMPER

NOT TO SCALE

THE INFORMATION CONTAINED HEREIN IS THE SOLE PROPERTY OF THE THRASHER GROUP, INC. REPRODUCTION OF THESE DOCUMENTS IN WHOLE OR IN PART, FOR ANY REASON WITHOUT PRIOR WRITTEN PERMISSION, IS STRICTLY PROHIBITED. COPYRIGHT © 2022 THE THRASHER GROUP, INC.

THRASHER

THE THRASHER GROUP INC.

600 WHITE OAKS BOULEVARD, BRIDGEPORT, WV 26330

PHONE: (304)624-4108

FAX: (304)624-7831

CONCRETE PARKING BUMPER DETAIL

GRAFTON TAYLOR COUNTY
HEALTH DEPARTMENT

GRAFTON, WEST VIRGINIA

DRAWN:
BM

CHECKED:
BM

APPROVED:
LG

ISSUED DATE:
05.16.2022

ADDENDUM NUMBER:

ADDENDUM #2

SHEET NUMBER:

C8



TEMP-GARD III SHOWER UNIT

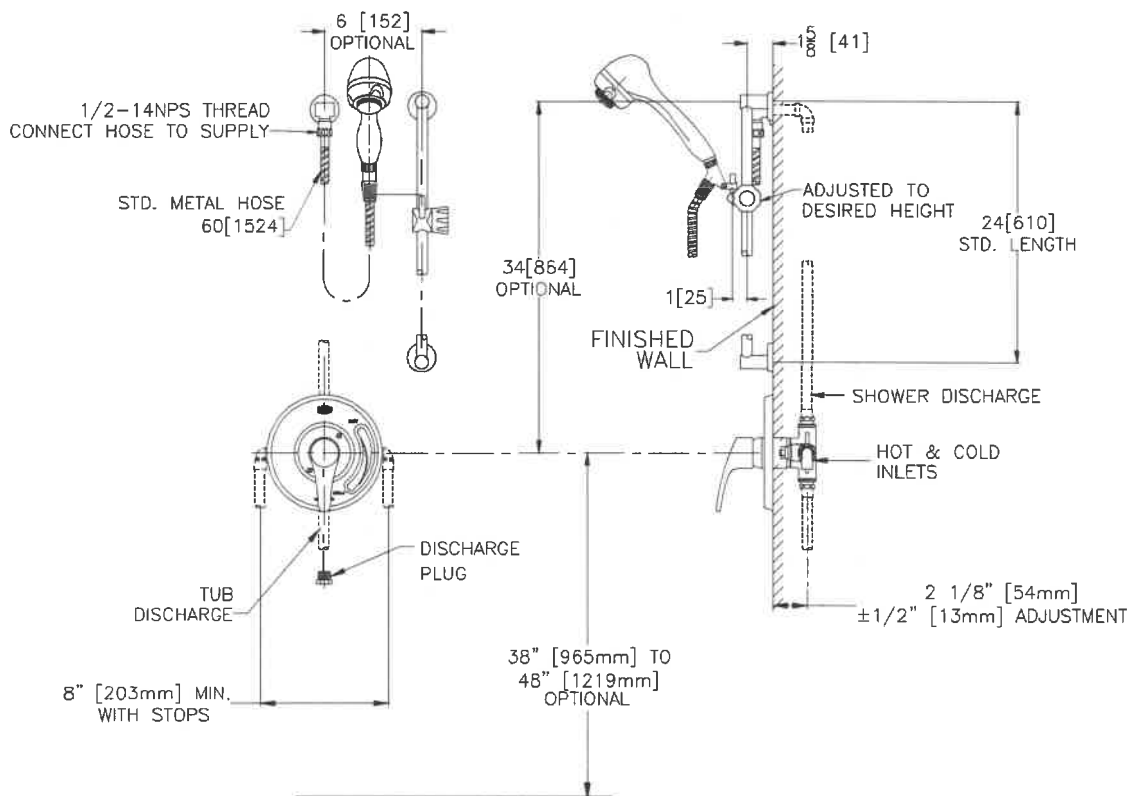
Z7300-SS-MT-HW-H9

TAG



ENGINEERING SPECIFICATIONS: ZURN Z7300-SS-MT-HW-H9

Single handle pressure balancing mixing tub and shower unit, ceramic control cartridge with stainless steel balancing piston, built in reverse connection capability (To reverse the hot and cold inlets simply remove cartridge and turn 180°), two service stops / check stops, and adjustable limit stop. When valve is turned on it must rotate from cold through to the hot position. All exposed trim and handle are metal with polished nickel chrome plated surface. Valve supplied with 1.6 GPM @ 80 psi hand/wall unit, 60"[1524mm] flexible metal hose 24"[610mm] mounting bar, supply elbow and flange. The valve inlets, shower and tub outlet are all standard with 1/2" NPT female thread connections. The 1/2" copper sweat options must be specified as shown below.



Note: All dimensions are for reference only. Do not use for pre-plumbing.
Parts shown as hidden lines are supplied by others.

OPTIONS (Check/specify appropriate options) Use with Z7300 prefix

Suffix	Description
___ -EXT	Extension Kit, Extends Valve Out by 1".
___ -SSC	1/2" Female Copper Sweat Connections w/ Service Stops
___ -ST	Sierra Series Decorative Metal Trim
___ -WF	Wall Mounting Flange For Fiberglass or Panel Wall Installation
___ -	Handwall Options (see Z7000-HW)

STANDARDS

Tested to meet the following standards for valves and plumbing fittings:
ASSE Standard No. 1016
ASME A112.18.1 / CSA B125.1
IAPMO® Listed
Meets or Exceeds ANSI A117.1M standard for physically handicapped

Additional Options

___ Z7000-SC	Pair of Dual Spring Check Valves
--------------	----------------------------------



ZURN INDUSTRIES, LLC ♦ COMMERCIAL BRASS OPERATION ♦ 2640 SOUTH WORK STREET ♦ FALCONER NY 14733
Phone: 1-800-997-3876 ♦ Fax: 1-919-775-3541 ♦ www.zurn.com

In Canada: ZURN INDUSTRIES LIMITED ♦ 3544 Nashua Drive ♦ Mississauga, Ontario L4V1L2 ♦ Phone: 905/405-8272 Fax: 905/405-1292



Accessible Showers

OPEN TOP GELCOAT
OR SOLID SURFACE

AQUARIUS
BATHWARE

G 6036 BF

OD: 60" x 36" x 77.25"

Weight: 170

Load Factor: 1.26

Handed By: Center Drain or Seat Side

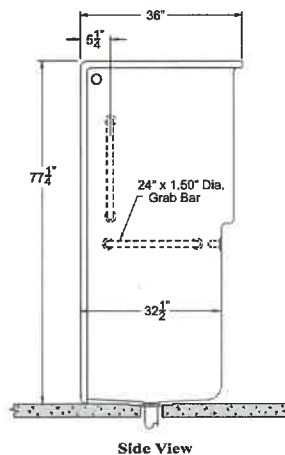
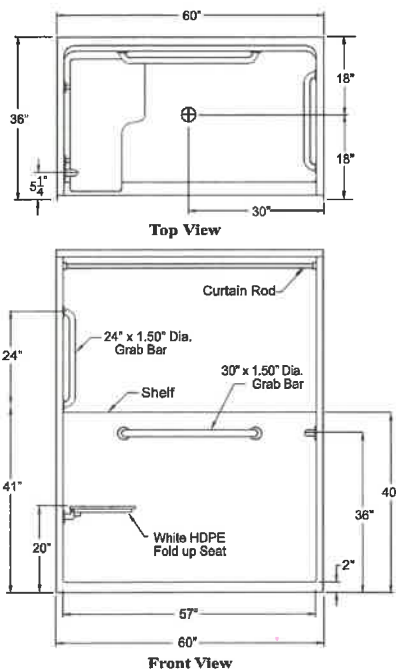
This unit complies with ANSI Z124.2, ASTM F462, ASTM E84, UPC, SBCCI, NAHB.

Warranty: Gelcoat models have a 3 year limited warranty. Acrylic models have a 5 year limited warranty. Pumps, parts, and accessories 1 year limited warranty. For further details please refer to the complete warranty section.

Due to the nature of the materials, dimensions may vary +/- 1/2".



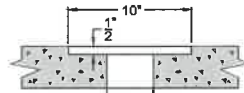
Photograph Illustrates Package One - Handed by Seat Right Handed



DETAIL OF DRAIN CORE AREA

4" To 6" Diameter Drain Core Through Slab.

10" Diameter x 1/2" Deep Recess Around Core



FRAMING DIMENSIONS

A	B	C	D
60 1/4"	36"	18"	18"

* Refer to pages 67 & 68 to view corresponding framing detail.

PKG ONE - ACCESSIBLE: G 6036 BF

- 2" Threshold
- Handed by Center Drain
- Mudset
- White Polyester Gelcoat Finish

Factory Installed Accessories (Valve not included):

- S-Bar - 24" x 1.5" Smooth SS
- S-Bar - 24" x 1.5" Smooth SS
- S-Bar - 30" x 1.5" Smooth SS
- 28.5" x 21" White Frameless HDPE Fold Up Seat
- 1" OD 18 Gauge SS Curtain Rod with Rod Cups

BUILD TO ORDER BASE PLUS ACCESSORIES

BASE UNIT 1: G 6036 BF

- Specify Threshold Height
- Handed by Center Drain or Seat Side
- Mudset
- Reinforced for Standard Accessories

BASE UNIT OPTIONAL ACCESSORIES

Standard Finish - Polyester Gelcoat:

- White
- Bone
- Biscuit

Premium Finish - CenturyStone™ Solid Surface:

- Solid - White, Bone or Biscuit
- Natural - Granite Finishes

Grab Bars

- S-Bar - 24" x 1.5" Smooth SS
- S-Bar - 24" x 1.25" Smooth White CC
- S-Bar - 24" x 1.25" Peened SS
- S-Bar - 30" x 1.5" Smooth SS
- S-Bar - 30" x 1.25" Smooth White CC
- S-Bar - 30" x 1.25" Peened SS

Standard Seats (Frame Style)

- 28.5" x 21" White Frameless HDPE Fold Up Seat
- 28.5" x 21" White Frameless Padded Fold Up Seat
- 28.5" x 21" Woodgrain Frameless Phenolic Seat

Factory Modifications

- Valve Drilling - Specify Hole Size
- Nurse Call Box Drilling - Specify Location
- .75" BF Threshold
- Wood Reinforcement for HUD
- Full Wood Reinforcement
- ArmorShield P3 Protection
- Install 30" Slide Bar / HS Kit
- Install SS Soap Dish - Recessed
- Install Standard Symmons Valve Package
- 1" OD 18 Gauge SS Curtain Rod with Rod Cups
- 1" OD 18 Gauge White Curtain Rod with Rod Cups
- Curtain Rod U-Cup Holder - Pair

Field Installed Accessories (Shipped Loose)

- No Caulk Drain - Chrome
- Collapsible Dam White 66"
- Caps for Collapsible Dam - Pair
- Curtain - Premium 66" x 72" White Nylon Weighted
- Curtain - Heavy Duty 66" x 72" White Vinyl Weighted

rev. 100410

* Unit is not available in the Northern market. See comparable unit G 3760 BF.



HDPE (high density polyethylene) seats used by Praxis Companies, LLC contain recycled materials.