

**CITY OF RIPLEY
JACKSON COUNTY, WEST VIRGINIA**

**PHASE II – PROPOSED SANITARY SEWER SYSTEM IMPROVEMENTS PROJECT
CONTRACT #1 – PROPOSED FORCEMAIN FROM EVANS WWTP TO PLAZA PUMP
STATION**

ADDENDUM #2

MARCH 23, 2022

THRASHER PROJECT #020-01535

TO WHOM IT MAY CONCERN:

A Pre-Bid Conference was held on Tuesday, March 1, 2022 at 2:00 pm on the above-referenced project. The following are clarifications and responses to questions posed by contractors for the above reference project.

A. GENERAL

1. CHANGES TO DAVIS BACON WAGE RATES

Davis Bacon Wage Rates have changed. Please use the attached Davis Bacon Wage Rates.

B. SPECIFICATIONS

1. Index
2. Specification 400567.13 – Reduced-Pressure Zone Backflow Preventers

This specification was mislabeled in the Index of the bidding documents. The Index has been corrected and this specification has been added.

3. Specification 400581.26 – Freeze-Proof Yard Hydrants

This specification was listed in the Index of the bidding documents but was not included. This specification has been added.

C. DRAWINGS

1. Sheet D4
 - a. Revised detail for 1" Yard Hydrant.

D. QUESTIONS AND RESPONSES

NONE

E. CLARIFICATIONS

NONE

If you have any questions or comments, please feel free to contact me at your earliest convenience. As a reminder, bids will be received until 2:00 p.m. on Wednesday, March 30, 2022, at 203 S. Church Street, Ripley, WV 25271.

Sincerely,

THE THRASHER GROUP, INC.

DANIEL E. FERRELL, P.E.
Project Manager

Enclosures: Index
Specification 400567.13 – Reduced-Pressure Zone Backflow Preventers
Specification 400581.26 – Freeze-Proof Yard Hydrants
Plan Sheet D4
Davis Bacon Wage Rates



**CITY OF RIPLEY
JACKSON COUNTY, WEST VIRGINIA
FOR
PHASE II – PROPOSED SANITARY SEWER SYSTEM IMPROVEMENTS PROJECT
CONTRACT #1 – PROPOSED FORCEMAIN FROM EVANS WWTP
TO PLAZA PUMP STATION**

- I N D E X -

BIDDING DOCUMENTS

Advertisement for Bids	C-111
Instructions to Bidders	C-200
Bid Opening Requirements	BOR
Bid Forms	C-410

CONDITIONS OF WORK

Notice of Award	C-510
Agreement	C-520
Certificate of Owner's Attorney and Agency Concurrence	GC-A
Engineer's Certification of Final Plans and Specifications	GC-B
Performance Bond	C-610
Payment Bond	C-615
Notice to Proceed	C-550
Contractor's Application for Payment	C-620
Change Order	C-941
Field Order	C-942
Work Change Directive	C-940
Certificate of Substantial Completion	C-625
General Conditions	C-700
Supplementary Conditions	C-800

RUS – WV Supplemental General Conditions	RUS
Additional Supplemental General Conditions	ASGC
American Iron and Steel	AISR
Davis Bacon Contract Requirements	DB
DBE Requirements	DBE
TECHNICAL SPECIFICATIONS	
Summary	011000
Price and Payment Procedures	012000
Substitution Procedures	012500
Contract Modification Procedures	012600
Administrative Requirements	013000
Project Management and Coordination	013100
Construction Progress Schedule	013216
Submittal Procedures	013300
Quality Requirements	014000
References	014200
Temporary Facilities and Controls	015000
Traffic Control	015700
Product Requirements	016000
Execution and closeout Requirements	017000
Construction Waste Management and Disposal	017419
Operation and Maintenance Data	017823
Project Record Documents	017839
Demonstration and Training	017900

Commissioning	019100
DOH Additional Specs	022210
Structure Demolition	024116
Cast-in-Place Concrete	033000
Crystalline Concrete Waterproofing	033050
Grouting	036000
Rough Carpentry	061000
Standing Seam Metal Roof Panels	074113.16
Sheet Metal Flashing and Trim	076200
Access Hatches	083500
Basic Electrical Materials and Methods	260500
Grounding and Bonding	260526
Panelboards	262416
Wiring Devices	262726
Fuses	262813
Enclosed Switches and Circuit Breakers	262816
Transfer Switches	263200
Packaged Engine Generators	263213
Surge Protection for Low-Voltage Electrical Power Circuits	264313
Soils for Earthwork	310513
Aggregates for Earthwork	310516
Site Clearing	311000
Clearing and Grubbing	311100
Excavation	312316

Trenching	312316.13
Dewatering	312319
Erosion and Sedimentation Controls	312500
Stone Surfacing Materials	321206
Asphalt Paving	321216
Chain Link Fences and Gates	323113
Grading and Seeding	329002
Landscaping	329119
Sewer and Manhole Testing	330130.13
Manholes and Structures	330513
Manhole Frames and Covers	330513.01
Manhole Grade Adjustment	330513.13
Utility Horizontal Directional Drilling	330523.13
Utility Identification	330526
Temporary Bypass Pumping	330600
Valve Boxes	331216.10
Boring and Jacking	331400
Public Sanitary Utility Sewerage Piping	333113
Utility Wastewater Pumping Stations	333216.1
Public Storm Utility Drainage Piping	334113
Plug Valves	400562
Swing Check Valves	400565.23
Reduced-Pressure Zone Backflow Preventers	400567.13
Air-Vacuum Valves for Wastewater Service	400578.23

Revised per Addendum #2
March 23, 2022

Freeze-Proof Yard Hydrants 400581.26

Magnetic Flow Meters 407113

Variable Frequency Drive 432700

FEDERAL WAGE RATES

ACCOMMODATION OF UTILITIES ON HIGHWAY RIGHT OF WAY

SECTION 400567.13 – REDUCED-PRESSURE ZONE BACKFLOW PREVENTERS

PART 1 - GENERAL

1.1 SUMMARY

- A. Section Includes:
 - 1. Reduced-pressure zone backflow preventer
 - 2. Heated, aboveground enclosure

1.2 DEFINITIONS

- A. Outside Screw and Yoke (OS&Y) Valve: A valve in which the operating screw is driven by a threaded nut that is built into the handle.

1.3 REFERENCE STANDARDS

- A. American Water Works Association:
 - 1. AWWA C606 - Grooved and Shouldered Joints.
- B. ASME International:
 - 1. ASME B16.1 - Gray Iron Pipe Flanges and Flanged Fittings: Classes 25, 125, and 250.
- C. ASSE International:
 - 1. ASSE 1013 - Performance Requirements for Reduced Pressure Principle Backflow Preventers and Reduced Pressure Principle Fire Protection Backflow Preventers.
- D. NSF International:
 - 1. NSF 61 - Drinking Water System Components - Health Effects.
 - 2. NSF 372 - Drinking Water System Components - Lead Content.

1.4 COORDINATION

- A. Section 013000 - Administrative Requirements: Requirements for coordination.
- B. Coordinate Work of this Section with installation of process piping.

1.5 SUBMITTALS

- A. Section 013300 - Submittal Procedures: Requirements for submittals.

- B. Product Data: Submit manufacturer catalog information regarding backflow preventers and accessories.
- C. Manufacturer's Certificate: Certify that products meet or exceed specified requirements.
- D. Manufacturer Instructions: Submit special procedures and setting dimensions.
- E. Field Quality-Control Submittals: Indicate results of Contractor-furnished tests and inspections.
- F. Qualifications Statements:
 - 1. Submit qualifications for manufacturer and installer.
 - 2. Submit manufacturer's approval of installer.

1.6 CLOSEOUT SUBMITTALS

- A. Section 017000 - Execution and Closeout Requirements: Requirements for submittals.
- B. Project Record Documents: Record actual locations of backflow preventers.

1.7 QUALITY ASSURANCE

- A. Materials in Contact with Potable Water: Certified to NSF Standards 61 and 372.
- B. Perform Work according to WVDEP standards.

1.8 QUALIFICATIONS

- A. Manufacturer: Company specializing in manufacturing products specified in this Section with minimum three years' documented experience.

1.9 DELIVERY, STORAGE, AND HANDLING

- A. Section 016000 - Product Requirements: Requirements for transporting, handling, storing, and protecting products.
- B. Inspection: Accept materials on Site in manufacturer's original packaging and inspect for damage.
- C. Store materials according to manufacturer instructions.
- D. Protection:
 - 1. Protect materials from moisture and dust by storing in clean, dry location remote from construction operations areas.
 - 2. Furnish temporary end caps and closures on piping and fittings and maintain in place until installation.

3. Provide additional protection according to manufacturer instructions.

1.10 WARRANTY

- A. Section 017000 - Execution and Closeout Requirements: Requirements for warranties.
- B. Furnish one year manufacturer's warranty for backflow preventers.

PART 2 - PRODUCTS

2.1 REDUCED-PRESSURE ZONE BACKFLOW PREVENTERS

A. Manufacturers:

1. WATTS
2. Zurn Industries, LLC
3. Ames Fire & Waterworks

B. Substitutions: Engineer's approved equal.

C. Description:

1. Comply with ASSE 1013.
2. Configuration:
 - a. Two independently operating, spring-loaded check valves.
 - b. Diaphragm-type differential pressure-relief valve located between check valves.
 - c. Third check valve will open under back pressure in case of diaphragm failure.
3. Materials:
 - a. Body: Cast iron or Ductile iron.
 - b. Internal Components: Bronze.
 - c. Seal Rings: EPDM
 - d. Sensing Hose Line: Braided stainless steel.
4. Connections: Flanged, ASME B16.1, Class 125.
5. Furnish assembly with two gate valves, strainer, and four test cocks.
6. Size: 1 to 2 inch.
7. Maximum Operating Pressure: 175 psig.

D. Accessories:

1. Strainer: Wye type.
2. End Valves: Gate, OS&Y.
3. Air gap.

2.2 HEATED, ABOVEGROUND ENCLOSURE

- A. Manufacturers:
 - 1. Safe-T-Cover
- B. Substitutions: Engineer's approved equal.
- C. Description:
 - 1. Heated, aboveground enclosure for backflow preventer
 - a. 90W of heat is required within enclosure.
- D. Materials:
 - 1. Marine grade aluminum with 1.5" (R-9) insulation board.
- E. Accessories:
 - 1. ASSE Standard 1060 compliant drain flap.
 - 2. #30 Heat Cable.

PART 3 - EXECUTION

3.1 EXAMINATION

- A. Section 017000 - Execution and Closeout Requirements: Requirements for installation examination.
- B. Verify that field dimensions are as indicated on Shop Drawings.

3.2 PREPARATION

- A. Section 017000 - Execution and Closeout Requirements: Requirements for installation preparation.
- B. Thoroughly clean end connections before installation.
- C. Close pipe and equipment openings with caps or plugs during installation.
- D. Cleaning: Clean surfaces to remove foreign substances.

3.3 INSTALLATION

- A. According to manufacturer instructions and local code requirements.
- B. Repair damaged coatings with material equal to original coating.

3.4 FIELD QUALITY CONTROL

- A. Section 014000 - Quality Requirements: Requirements for inspecting and testing.
- B. After installation, inspect for interferences and proper supports.
- C. Repair damaged coatings with material equal to original coating.

3.5 CLEANING

- A. Section 017000 - Execution and Closeout Requirements: Requirements for cleaning.
- B. Keep interior of backflow preventers clean as installation progresses.

3.6 DEMONSTRATION

- A. Section 017000 - Execution and Closeout Requirements: Requirements for demonstration and training.
- B. Demonstrate equipment startup, shutdown, routine maintenance, and emergency repair procedures to Owner's personnel.

END OF SECTION 400567.13

City of Ripley
Contract #1 - Proposed Forcemain from Evans WWTP to Plaza Pump Station

Revised per Addendum #2
March 23, 2022
020-01535

This page intentionally left blank.

SECTION 400581.26 – FREEZE-PROOF YARD HYDRANTS

PART 1 - GENERAL

1.1 SUMMARY

- A. Section Includes: Non-freeze yard hydrants.

1.2 REFERENCE STANDARDS

- A. NSF International:
 - 1. NSF 61 - Drinking Water System Components - Health Effects.
 - 2. NSF 372 - Drinking Water System Components - Lead Content.

1.3 COORDINATION

- A. Section 013000 - Administrative Requirements: Requirements for coordination.
- B. Coordinate Work of this Section with installation of water mains.

1.4 SUBMITTALS

- A. Section 013300 - Submittal Procedures: Requirements for submittals.
- B. Product Data: Submit manufacturer information regarding component materials, fittings, assembly and parts diagram, and accessories.
- C. Manufacturer's Certificate: Certify that products meet or exceed specified requirements.
- D. Manufacturer Instructions: Submit detailed instructions on installation requirements, including storage and handling procedures.
- E. Field Quality-Control Submittals: Indicate results of Contractor-furnished tests and inspections.

1.5 CLOSEOUT SUBMITTALS

- A. Section 017000 - Execution and Closeout Requirements: Requirements for submittals.
- B. Project Record Documents: Record actual locations of non-freeze yard hydrants.

1.6 MAINTENANCE MATERIAL SUBMITTALS

- A. Section 017000 - Execution and Closeout Requirements: Requirements for maintenance materials.

1.7 QUALITY ASSURANCE

- A. Materials in Contact with Potable Water: Certified according to NSF 61 and NSF 372.

1.8 DELIVERY, STORAGE, AND HANDLING

- A. Section 016000 - Product Requirements: Requirements for transporting, handling, storing, and protecting products.
- B. Delivery:
 - 1. Seal hydrant ends to prevent entry of foreign matter.
 - 2. Inspection: Accept materials on Site in manufacturer's original packaging and inspect for damage.
- C. Store materials according to manufacturer instructions.
- D. Protection:
 - 1. Protect materials from moisture and dust by storing in clean, dry location remote from construction operations areas.
 - 2. Provide additional protection according to manufacturer instructions.

PART 2 - PRODUCTS

2.1 NON-FREEZE YARD HYDRANTS

- A. Manufacturers:
 - 1. Merrill
 - 2. Simmons
 - 3. Woodford
 - 4. Murdock
- B. Substitutions: Engineer's approved equal.
- C. Description:
 - 1. Type: Non-freeze.
 - 2. Closure Valve: Free-floating, compression type.
 - 3. Barrel: Automatic drain after use.
 - 4. Main Valve: 1"

5. Stem: Non-rising.
6. Lubrication: Furnish access hole in operating nut.

D. Materials:

1. Body: Galvanized steel.
2. Head: Cast iron.
3. Outlets: Brass.
4. Main Valve: Stainless steel.
5. Drain Valve: Stainless steel.
6. Operating Rod: Stainless steel.

E. Operation:

1. Cam-type, cast-iron lever control.
2. Drain Valve: Actuated when main valve is in CLOSED position.

F. Connections:

1. Hose Connection: One each, 5/8-inch hose connections, with threaded quick-disconnect adapters.
2. Drain Port: 1/2-inch.
3. Inlet:
 - a. Size: 3/4-inch.
 - b. Type: Threaded.

G. Accessories:

1. Operating handle lock.
2. Casing Guard: Aluminum.

PART 3 - EXECUTION

3.1 EXAMINATION

- A. Section 017000 - Execution and Closeout Requirements: Requirements for installation examination.
- B. Identify required lines, levels, contours, and datum locations.
- C. Verify that elevations of existing facilities prior to excavation and installation of non-freeze yard hydrants are as indicated on Drawings.

3.2 PREPARATION

- A. Section 017000 - Execution and Closeout Requirements: Requirements for installation preparation.

- B. Locate, identify, and protect from damage utilities to remain.

3.3 INSTALLATION

- A. Perform trench excavation, backfilling, and compaction as specified in Sections 310513, 310516, 312316 and 312316.13.
- B. Install non-freeze yard hydrants in conjunction with pipe laying.
- C. Provide support blocking and drainage gravel while installing non-freeze yard hydrants; do not block drain hole.
- D. Orientation:
 - 1. Set valves and hydrants plumb.
 - 2. Set non-freeze yard hydrants with outlets as indicated on Drawings.
 - 3. Set non-freeze yard hydrants with centerline of outlets 36-inches above finished grade.
- E. After main-line pressure testing, flush non-freeze yard hydrants and check for proper drainage.
- F. Disinfection of Water Piping System: Flush and disinfect non-freeze yard hydrants with water mains.

3.4 FIELD QUALITY CONTROL

- A. Section 014000 - Quality Requirements: Requirements for inspecting and testing.
- B. Disinfection, Flushing, and Sampling:
 - 1. Disinfect pipeline installation according to AWWA C651.
 - 2. Use of liquid chlorine is not permitted.
 - 3. Upon completion of retention period required for disinfection, flush pipeline until chlorine concentration in water leaving pipeline is no higher than that generally prevailing in existing system or is acceptable for domestic use.
 - 4. Disposal:
 - a. Legally dispose of chlorinated water.
 - b. If chlorinated discharge may cause damage to environment, apply neutralizing chemical to chlorinated water to neutralize chlorine residual remaining in water.
 - 5. After final flushing and before pipeline is connected to existing system or placed in service, certify that disinfectant level meets quality standards of WVDHHR.

END OF SECTION 400581.26

"General Decision Number: WV20220012 03/18/2022

Superseded General Decision Number: WV20210012

State: West Virginia

Construction Type: Building

County: Jackson County in West Virginia.

Note: Contracts subject to the Davis-Bacon Act are generally required to pay at least the applicable minimum wage rate required under Executive Order 14026 or Executive Order 13658. Please note that these Executive Orders apply to covered contracts entered into by the federal government that are subject to the Davis-Bacon Act itself, but do not apply to contracts subject only to the Davis-Bacon Related Acts, including those set forth at 29 CFR 5.1(a)(2)-(60).

If the contract is entered into on or after January 30, 2022, or the contract is renewed or extended (e.g., an option is exercised) on or after January 30, 2022:	<ul style="list-style-type: none">. Executive Order 14026 generally applies to the contract.. The contractor must pay all covered workers at least \$15.00 per hour (or the applicable wage rate listed on this wage determination, if it is higher) for all hours spent performing on the contract in 2022.
If the contract was awarded on or between January 1, 2015 and January 29, 2022, and the contract is not renewed or extended on or after January 30, 2022:	<ul style="list-style-type: none">. Executive Order 13658 generally applies to the contract.. The contractor must pay all covered workers at least \$11.25 per hour (or the applicable wage rate listed on this wage determination, if it is higher) for all hours spent performing on that contract in 2022.

The applicable Executive Order minimum wage rate will be adjusted annually. If this contract is covered by one of the Executive Orders and a classification considered necessary for performance of work on the contract does not appear on this wage determination, the contractor must still submit a conformance request.

Additional information on contractor requirements and worker protections under the Executive Orders is available at <https://www.dol.gov/agencies/whd/government-contracts>.

Modification Number	Publication Date
0	01/07/2022
1	02/18/2022
2	02/25/2022
3	03/18/2022

	Rates	Fringes
ASBESTOS WORKER/HEAT & FROST INSULATOR.....	\$ 34.00	27.92

BOIL0667-005 01/01/2021

	Rates	Fringes
BOILERMAKER.....	\$ 41.63	26.38

BRWV0001-004 08/01/2021

	Rates	Fringes
BRICKLAYER.....	\$ 28.00	25.28

BRWV0009-001 12/01/2021

	Rates	Fringes
BRICK POINTER/CAULKER/CLEANER....	\$ 30.15	25.24

BRWV0015-010 06/01/2021

	Rates	Fringes
MASON - STONE.....	\$ 30.25	24.58

CARP0443-009 05/01/2021

	Rates	Fringes
MILLWRIGHT.....	\$ 35.50	26.75

CARP1024-001 06/01/2021

	Rates	Fringes
CARPENTER (Scaffold Builder Only).....	\$ 29.40	24.57

CARP1159-003 12/01/2020

	Rates	Fringes
CARPENTER (Including Drywall Hanging).....	\$ 30.03	23.65

CARP1911-004 12/01/2020

	Rates	Fringes
CARPENTER (Floor Laying - Carpet, Hardwood, Resilient and Vinyl Only).....	\$ 30.03	23.65

ENGI0132-007 12/01/2018

	Rates	Fringes
POWER EQUIPMENT OPERATOR: GROUP 1.....	\$ 39.56	19.95

GROUP 2.....	\$ 39.21	19.95
GROUP 3.....	\$ 38.21	19.95
GROUP 4.....	\$ 27.71	19.95

GROUP 1: All Friction Cranes, Tower Cranes and all Cranes with 180 ft. or more of boom including mast and jibs or lifting capacity of 100 tons or more and hoists with 30,000 pound line pull or more

GROUP 2: Operating Cranes and Tower Cranes with a lifting capacity of 15 tons and over

GROUP 3: Backhoe, all other Cranes

GROUP 4: Bobcat/Skid Steer/Skid Loader, Roller, Oiler

 IRON0549-006 12/01/2021

	Rates	Fringes
IRONWORKER (Ornamental).....	\$ 34.44	24.61

 IRON0787-006 06/01/2021

	Rates	Fringes
IRONWORKER (Reinforcing).....	\$ 30.68	23.05

 LABO0379-019 12/01/2020

	Rates	Fringes
LABORER Wacker Roller Operator.....	\$ 26.32	16.50

 LABO0453-003 12/01/2017

	Rates	Fringes
LABORER Concrete Saw (Hand Held/Walk Behind).....	\$ 22.76	16.75
Grouting.....	\$ 22.11	17.25

 LABO0543-003 06/01/2020

	Rates	Fringes
LABORER.....	\$ 25.41	16.75

LABORER CLASSIFICATIONS

Asphalt Raker, Jack Hammer, Motorized Buggy Operator, Water Boy

 LABO0984-005 12/01/2020

	Rates	Fringes
LABORER Group 2.....	\$ 21.94	15.75

LABORER CLASSIFICATIONS

GROUP 2: Airtool Operator, Asbestos Abatement (Removal from Floors, Walls, and Ceiling), Bobcat Operator (Clean up/Demolition), Dewatering, Rodman, Skytrak Forklift Operator

 LAB01085-003 06/01/2020

	Rates	Fringes
LABORER		
Common or General.....	\$ 22.76	16.85
Mortar Mixer.....	\$ 22.76	16.85
Scaffold Builder (Brick and Masonry).....	\$ 22.76	16.85

 PAIN0970-007 12/01/2021

	Rates	Fringes
PAINTER (Drywall Finishing/Taping).....	\$ 29.85	17.70

 PAIN1195-002 12/01/2021

	Rates	Fringes
GLAZIER.....	\$ 31.50	11.38

 PLAS0926-007 06/01/2018

	Rates	Fringes
CEMENT MASON/CONCRETE FINISHER...	\$ 31.63	21.26

 PLAS0926-008 06/01/2018

	Rates	Fringes
CEMENT MASON/CONCRETE FINISHER...	\$ 31.63	21.26
PLASTERER.....	\$ 30.06	20.36

 * UAVG-WV-0001 01/01/2021

	Rates	Fringes
CARPENTER (Form Work Only).....	\$ 29.81	23.45

 * UAVG-WV-0005 01/01/2019

	Rates	Fringes
LABORER (Carpenter Tender).....	\$ 23.69	16.32
LABORER (Chipping Guns).....	\$ 24.78	16.25
LABORER (Concrete Worker).....	\$ 23.57	16.17
LABORER (Grade Checker).....	\$ 23.45	16.16
LABORER (Landscape).....	\$ 23.08	16.35
LABORER (Pipelayer).....	\$ 24.06	16.34
LABORER (Tamper - Hand Held).....	\$ 23.33	16.04

 * UAVG-WV-0028 01/01/2019

	Rates	Fringes
--	-------	---------

PLUMBER.....\$ 32.54 24.58

 SUWV2012-010 08/13/2012

	Rates	Fringes
ELECTRICIAN.....	\$ 28.16	15.11
IRONWORKER, STRUCTURAL.....	\$ 26.01	12.18
LABORER: Demolition.....	\$ 20.58	9.47
LABORER: Mason Tender - Brick...	\$ 21.47	8.29
LABORER: Mason Tender - Cement/Concrete.....	\$ 22.05	8.54
OPERATOR: Bulldozer.....	\$ 30.24	10.26
OPERATOR: Excavator.....	\$ 30.31	10.81
OPERATOR: Forklift.....	\$ 33.09	3.00
PAINTER: Brush, Roller and Spray.....	\$ 22.03	9.95
PIPEFITTER, Includes HVAC Pipe Installation.....	\$ 27.64	18.09
ROOFER.....	\$ 24.28	9.32
SHEET METAL WORKER, Includes HVAC Duct Installation.....	\$ 25.61	15.68
Truck Driver: Single and Double Axle Dump Trucks.....	\$ 28.52	3.00

 WELDERS - Receive rate prescribed for craft performing
 operation to which welding is incidental.

=====
 Note: Executive Order (EO) 13706, Establishing Paid Sick Leave
 for Federal Contractors applies to all contracts subject to the
 Davis-Bacon Act for which the contract is awarded (and any
 solicitation was issued) on or after January 1, 2017. If this
 contract is covered by the EO, the contractor must provide
 employees with 1 hour of paid sick leave for every 30 hours
 they work, up to 56 hours of paid sick leave each year.
 Employees must be permitted to use paid sick leave for their
 own illness, injury or other health-related needs, including
 preventive care; to assist a family member (or person who is
 like family to the employee) who is ill, injured, or has other
 health-related needs, including preventive care; or for reasons
 resulting from, or to assist a family member (or person who is
 like family to the employee) who is a victim of, domestic
 violence, sexual assault, or stalking. Additional information
 on contractor requirements and worker protections under the EO
 is available at
<https://www.dol.gov/agencies/whd/government-contracts>.

Unlisted classifications needed for work not included within
 the scope of the classifications listed may be added after
 award only as provided in the labor standards contract clauses

The body of each wage determination lists the classification and wage rates that have been found to be prevailing for the cited type(s) of construction in the area covered by the wage determination. The classifications are listed in alphabetical order of "identifiers" that indicate whether the particular rate is a union rate (current union negotiated rate for local), a survey rate (weighted average rate) or a union average rate (weighted union average rate).

Union Rate Identifiers

A four letter classification abbreviation identifier enclosed in dotted lines beginning with characters other than "SU" or "UAVG" denotes that the union classification and rate were prevailing for that classification in the survey. Example: PLUM0198-005 07/01/2014. PLUM is an abbreviation identifier of the union which prevailed in the survey for this classification, which in this example would be Plumbers. 0198 indicates the local union number or district council number where applicable, i.e., Plumbers Local 0198. The next number, 005 in the example, is an internal number used in processing the wage determination. 07/01/2014 is the effective date of the most current negotiated rate, which in this example is July 1, 2014.

Union prevailing wage rates are updated to reflect all rate changes in the collective bargaining agreement (CBA) governing this classification and rate.

Survey Rate Identifiers

Classifications listed under the "SU" identifier indicate that no one rate prevailed for this classification in the survey and the published rate is derived by computing a weighted average rate based on all the rates reported in the survey for that classification. As this weighted average rate includes all rates reported in the survey, it may include both union and non-union rates. Example: SULA2012-007 5/13/2014. SU indicates the rates are survey rates based on a weighted average calculation of rates and are not majority rates. LA indicates the State of Louisiana. 2012 is the year of survey on which these classifications and rates are based. The next number, 007 in the example, is an internal number used in producing the wage determination. 5/13/2014 indicates the survey completion date for the classifications and rates under that identifier.

Survey wage rates are not updated and remain in effect until a new survey is conducted.

Union Average Rate Identifiers

Classification(s) listed under the UAVG identifier indicate that no single majority rate prevailed for those classifications; however, 100% of the data reported for the classifications was union data. EXAMPLE: UAVG-OH-0010 08/29/2014. UAVG indicates that the rate is a weighted union average rate. OH indicates the state. The next number, 0010 in the example, is an internal number used in producing the wage determination. 08/29/2014 indicates the survey completion date

for the classifications and rates under that identifier.

A UAVG rate will be updated once a year, usually in January of each year, to reflect a weighted average of the current negotiated/CBA rate of the union locals from which the rate is based.

WAGE DETERMINATION APPEALS PROCESS

1.) Has there been an initial decision in the matter? This can be:

- * an existing published wage determination
- * a survey underlying a wage determination
- * a Wage and Hour Division letter setting forth a position on a wage determination matter
- * a conformance (additional classification and rate) ruling

On survey related matters, initial contact, including requests for summaries of surveys, should be with the Wage and Hour National Office because National Office has responsibility for the Davis-Bacon survey program. If the response from this initial contact is not satisfactory, then the process described in 2.) and 3.) should be followed.

With regard to any other matter not yet ripe for the formal process described here, initial contact should be with the Branch of Construction Wage Determinations. Write to:

Branch of Construction Wage Determinations
Wage and Hour Division
U.S. Department of Labor
200 Constitution Avenue, N.W.
Washington, DC 20210

2.) If the answer to the question in 1.) is yes, then an interested party (those affected by the action) can request review and reconsideration from the Wage and Hour Administrator (See 29 CFR Part 1.8 and 29 CFR Part 7). Write to:

Wage and Hour Administrator
U.S. Department of Labor
200 Constitution Avenue, N.W.
Washington, DC 20210

The request should be accompanied by a full statement of the interested party's position and by any information (wage payment data, project description, area practice material, etc.) that the requestor considers relevant to the issue.

3.) If the decision of the Administrator is not favorable, an interested party may appeal directly to the Administrative Review Board (formerly the Wage Appeals Board). Write to:

Administrative Review Board
U.S. Department of Labor
200 Constitution Avenue, N.W.
Washington, DC 20210

4.) All decisions by the Administrative Review Board are final.

=====

END OF GENERAL DECISIO"

"General Decision Number: WV20220061 02/25/2022

Superseded General Decision Number: WV20210061

State: West Virginia

Construction Type: Heavy

Counties: Barbour, Braxton, Calhoun, Fayette, Gilmer, Greenbrier, Jackson, Lewis, Mason, McDowell, Mingo, Monroe, Nicholas, Pendleton, Pocahontas, Randolph, Ritchie, Roane, Summers, Tucker, Upshur, Webster and Wyoming Counties in West Virginia.

Note: Contracts subject to the Davis-Bacon Act are generally required to pay at least the applicable minimum wage rate required under Executive Order 14026 or Executive Order 13658. Please note that these Executive Orders apply to covered contracts entered into by the federal government that are subject to the Davis-Bacon Act itself, but do not apply to contracts subject only to the Davis-Bacon Related Acts, including those set forth at 29 CFR 5.1(a)(2)-(60).

If the contract is entered into on or after January 30, 2022, or the contract is renewed or extended (e.g., an option is exercised) on or after January 30, 2022:	. Executive Order 14026 generally applies to the contract. . The contractor must pay all covered workers at least \$15.00 per hour (or the applicable wage rate listed on this wage determination, if it is higher) for all hours spent performing on the contract in 2022.
If the contract was awarded on or between January 1, 2015 and January 29, 2022, and the contract is not renewed or extended on or after January 30, 2022:	. Executive Order 13658 generally applies to the contract. . The contractor must pay all covered workers at least \$11.25 per hour (or the applicable wage rate listed on this wage determination, if it is higher) for all hours spent performing on that contract in 2022.

The applicable Executive Order minimum wage rate will be adjusted annually. If this contract is covered by one of the Executive Orders and a classification considered necessary for performance of work on the contract does not appear on this wage determination, the contractor must still submit a conformance request.

Additional information on contractor requirements and worker protections under the Executive Orders is available at <https://www.dol.gov/agencies/whd/government-contracts>.

0 01/07/2022
 1 02/18/2022
 2 02/25/2022

CARP0443-008 05/01/2021

	Rates	Fringes
MILLWRIGHT.....	\$ 35.50	26.75

 ELEC0307-008 11/28/2021

	Rates	Fringes
ELECTRICIAN.....	\$ 35.72	18.44

 ENGI0132-014 12/01/2021

	Rates	Fringes
POWER EQUIPMENT OPERATOR:		
GROUP 1.....	\$ 38.95	19.55
GROUP 2.....	\$ 36.19	19.55
GROUP 3.....	\$ 35.08	19.55
GROUP 4.....	\$ 31.62	19.55

POWER EQUIPMENT OPERATOR CLASSIFICATIONS

GROUP 1: Cranes (All types), Boom trucks, Loaders of six (6) cubic yard capacity and over, Excavators and shovels with an operating weight of one hundred ten thousand (110,000) pounds and over.

GROUP 2: Loaders up to six (6) cubic yard capacity, Backhoe, Bulldozers, Bobcat/Skid Steer/Skid Loader, Forklift, Drill, Excavators and shovels with an operating weight of up to one hundred ten thousand (110,000) pounds

GROUP 3: Roller.

GROUP 4: Oiler

 ENGI0132-027 12/01/2021

	Rates	Fringes
POWER EQUIPMENT OPERATOR:		
(PIPELINE)		
GROUP 1.....	\$ 38.95	19.55
GROUP 2.....	\$ 36.19	19.55

POWER EQUIPMENT OPERATOR PIPELINE CLASSIFICATIONS

GROUP 1: Boom, Bulldozer, Excavator, Mechanic, Pipe Bending Machine

GROUP 2: Oiler.

 ENGI0132-029 12/01/2021

	Rates	Fringes
POWER EQUIPMENT OPERATOR:		

Single and Double Axle
 Dump Trucks.....\$ 36.19 19.55

IRON0549-011 12/01/2021

	Rates	Fringes
IRONWORKER, ORNAMENTAL.....	\$ 34.44	24.61

IRON0568-020 12/01/2020

	Rates	Fringes
IRONWORKER, REINFORCING AND STRUCTURAL.....	\$ 33.70	22.04

LABO0379-040 12/01/2020

	Rates	Fringes
LABORER: (PIPELINE).....	\$ 25.26	16.50

LABORER CLASSIFICATIONS:

Chain Saw, Common, Flagger, Landscape, Pipelayer, Sandblaster

LABO0379-043 12/01/2021

	Rates	Fringes
LABORER:		
GROUP 1.....	\$ 27.35	16.50
GROUP 2.....	\$ 26.32	16.50
GROUP 3.....	\$ 25.26	16.50

GROUP 1: Tunnel Driller, Tunnel Miner.

GROUP 2: Air Tool Operator, Chain Saw, Compactor (Dirt) Hand Held, Concrete Worker, Hand Held Drill, Form Work Only, Grade Checker, Grouting, Pipelayer, Skytrak Forklift Operator, Tamper (Hand Held), Wacker Roller Operator.

GROUP 3: Carpenter Tender, Common or General, Flagger, Landscape

PLAS0926-001 06/01/2018

	Rates	Fringes
CEMENT MASON/CONCRETE FINISHER...	\$ 31.63	21.26

* UAVG-WV-0010 01/01/2019

	Rates	Fringes
LABORER (Mason Tender - Cement/Concrete).....	\$ 26.17	16.50

* UAVG-WV-0012 01/01/2019

	Rates	Fringes
POWER EQUIPMENT OPERATOR		

(Mechanic).....\$ 35.45 18.30

WELDERS - Receive rate prescribed for craft performing
operation to which welding is incidental.

=====
Note: Executive Order (EO) 13706, Establishing Paid Sick Leave for Federal Contractors applies to all contracts subject to the Davis-Bacon Act for which the contract is awarded (and any solicitation was issued) on or after January 1, 2017. If this contract is covered by the EO, the contractor must provide employees with 1 hour of paid sick leave for every 30 hours they work, up to 56 hours of paid sick leave each year. Employees must be permitted to use paid sick leave for their own illness, injury or other health-related needs, including preventive care; to assist a family member (or person who is like family to the employee) who is ill, injured, or has other health-related needs, including preventive care; or for reasons resulting from, or to assist a family member (or person who is like family to the employee) who is a victim of, domestic violence, sexual assault, or stalking. Additional information on contractor requirements and worker protections under the EO is available at <https://www.dol.gov/agencies/whd/government-contracts>.

Unlisted classifications needed for work not included within the scope of the classifications listed may be added after award only as provided in the labor standards contract clauses (29CFR 5.5 (a) (1) (ii)).

The body of each wage determination lists the classification and wage rates that have been found to be prevailing for the cited type(s) of construction in the area covered by the wage determination. The classifications are listed in alphabetical order of ""identifiers"" that indicate whether the particular rate is a union rate (current union negotiated rate for local), a survey rate (weighted average rate) or a union average rate (weighted union average rate).

Union Rate Identifiers

A four letter classification abbreviation identifier enclosed in dotted lines beginning with characters other than ""SU"" or ""UAVG"" denotes that the union classification and rate were prevailing for that classification in the survey. Example: PLUM0198-005 07/01/2014. PLUM is an abbreviation identifier of the union which prevailed in the survey for this classification, which in this example would be Plumbers. 0198 indicates the local union number or district council number where applicable, i.e., Plumbers Local 0198. The next number, 005 in the example, is an internal number used in processing the wage determination. 07/01/2014 is the effective date of the most current negotiated rate, which in this example is July 1, 2014.

Union prevailing wage rates are updated to reflect all rate changes in the collective bargaining agreement (CBA) governing this classification and rate.

Survey Rate Identifiers

Classifications listed under the "SU" identifier indicate that no one rate prevailed for this classification in the survey and the published rate is derived by computing a weighted average rate based on all the rates reported in the survey for that classification. As this weighted average rate includes all rates reported in the survey, it may include both union and non-union rates. Example: SULA2012-007 5/13/2014. SU indicates the rates are survey rates based on a weighted average calculation of rates and are not majority rates. LA indicates the State of Louisiana. 2012 is the year of survey on which these classifications and rates are based. The next number, 007 in the example, is an internal number used in producing the wage determination. 5/13/2014 indicates the survey completion date for the classifications and rates under that identifier.

Survey wage rates are not updated and remain in effect until a new survey is conducted.

Union Average Rate Identifiers

Classification(s) listed under the UAVG identifier indicate that no single majority rate prevailed for those classifications; however, 100% of the data reported for the classifications was union data. EXAMPLE: UAVG-OH-0010 08/29/2014. UAVG indicates that the rate is a weighted union average rate. OH indicates the state. The next number, 0010 in the example, is an internal number used in producing the wage determination. 08/29/2014 indicates the survey completion date for the classifications and rates under that identifier.

A UAVG rate will be updated once a year, usually in January of each year, to reflect a weighted average of the current negotiated/CBA rate of the union locals from which the rate is based.

WAGE DETERMINATION APPEALS PROCESS

1.) Has there been an initial decision in the matter? This can be:

- * an existing published wage determination
- * a survey underlying a wage determination
- * a Wage and Hour Division letter setting forth a position on a wage determination matter
- * a conformance (additional classification and rate) ruling

On survey related matters, initial contact, including requests for summaries of surveys, should be with the Wage and Hour National Office because National Office has responsibility for the Davis-Bacon survey program. If the response from this initial contact is not satisfactory, then the process described in 2.) and 3.) should be followed.

With regard to any other matter not yet ripe for the formal process described here, initial contact should be with the Branch of Construction Wage Determinations. Write to:

Branch of Construction Wage Determinations
Wage and Hour Division

U.S. Department of Labor
200 Constitution Avenue, N.W.
Washington, DC 20210

2.) If the answer to the question in 1.) is yes, then an interested party (those affected by the action) can request review and reconsideration from the Wage and Hour Administrator (See 29 CFR Part 1.8 and 29 CFR Part 7). Write to:

Wage and Hour Administrator
U.S. Department of Labor
200 Constitution Avenue, N.W.
Washington, DC 20210

The request should be accompanied by a full statement of the interested party's position and by any information (wage payment data, project description, area practice material, etc.) that the requestor considers relevant to the issue.

3.) If the decision of the Administrator is not favorable, an interested party may appeal directly to the Administrative Review Board (formerly the Wage Appeals Board). Write to:

Administrative Review Board
U.S. Department of Labor
200 Constitution Avenue, N.W.
Washington, DC 20210

4.) All decisions by the Administrative Review Board are final.

=====
END OF GENERAL DECISIO"

"General Decision Number: WV20220080 02/25/2022

Superseded General Decision Number: WV20210080

State: West Virginia

Construction Type: Highway

Counties: West Virginia Statewide.

HIGHWAY CONSTRUCTION PROJECTS (excluding tunnels, building structures in rest area projects & railroad construction; bascule, suspension & spandrel arch bridges designed for commercial navigation, bridges involving marine construction; and other major bridges).HIGHWAY CONSTRUCTION PROJECTS

Note: Contracts subject to the Davis-Bacon Act are generally required to pay at least the applicable minimum wage rate required under Executive Order 14026 or Executive Order 13658. Please note that these Executive Orders apply to covered contracts entered into by the federal government that are subject to the Davis-Bacon Act itself, but do not apply to contracts subject only to the Davis-Bacon Related Acts, including those set forth at 29 CFR 5.1(a)(2)-(60).

If the contract is entered into on or after January 30, 2022, or the contract is renewed or extended (e.g., an option is exercised) on or after January 30, 2022:	. Executive Order 14026 generally applies to the contract. . The contractor must pay all covered workers at least \$15.00 per hour (or the applicable wage rate listed on this wage determination, if it is higher) for all hours spent performing on the contract in 2022.
If the contract was awarded on or between January 1, 2015 and January 29, 2022, and the contract is not renewed or extended on or after January 30, 2022:	. Executive Order 13658 generally applies to the contract. . The contractor must pay all covered workers at least \$11.25 per hour (or the applicable wage rate listed on this wage determination, if it is higher) for all hours spent performing on that contract in 2022.

The applicable Executive Order minimum wage rate will be adjusted annually. If this contract is covered by one of the Executive Orders and a classification considered necessary for performance of work on the contract does not appear on this wage determination, the contractor must still submit a conformance request.

Additional information on contractor requirements and worker protections under the Executive Orders is available at <https://www.dol.gov/agencies/whd/government-contracts>.

Modification Number	Publication Date
0	01/07/2022
1	02/25/2022

* SUWV2015-001 01/01/2014

	Rates	Fringes
BRICKLAYER		
Barbour, Berkeley, Doddridge, Gilmer, Grant, Hampshire, Hardy, Harrison, Jefferson, Lewis, Marion, Mineral, Monongalia, Morgan, Pendleton, Pocahontas, Preston, Randolph, Taylor, Tucker, Upshur, Webster.....	\$ 30.74	18.21
Boone, Braxton, Clay, Fayette, Greenbrier, Kanawha, Logan, McDowell, Mercer, Monroe, Nicholas, Putnam, Raleigh, Summers, Wyoming.....	\$ 29.66	20.20
Brooke, Hancock.....	\$ 29.94	16.22
Cabell, Lincoln, Mason, Mingo, Wayne.....	\$ 30.61	20.88
Calhoun, Jackson, Pleasants, Ritchie, Roane, Wirt, Wood.....	\$ 30.33	15.27
Marshall, Ohio, Tyler, Wetzel.....	\$ 30.01	16.26
CARPENTER		
Berkeley, Grant, Hampshire, Hardy, Jefferson, Mineral, Morgan, Pendleton.....	\$ 31.26	15.90
Brooke, Hancock, Marshall, Ohio.....	\$ 27.86	19.30
Remaining Counties.....	\$ 27.72	19.44
CEMENT MASON/CONCRETE FINISHER		
All Counties.....	\$ 28.67	18.85
DIVER		
Berkeley, Grant, Hampshire, Hardy, Jefferson, Mineral, Morgan, Pendleton Diver Tender.....	\$ 31.26	15.90
Diver.....	\$ 32.25	15.90
Brooke, Hancock, Marshall, Monongalia, Ohio, Wetzel Diver Tender.....	\$ 32.01	16.76
Diver.....	\$ 48.02	16.76
Remaining Counties Diver Tender.....	\$ 27.72	19.44
Diver.....	\$ 28.27	19.44
ELECTRICIAN (SIGNAL & LIGHTING)		
Equipment Operator.....	\$ 23.30	17.99
Flagger.....	\$ 17.00	7.39
Groundman/Truck Driver.....	\$ 20.79	17.89

Installer.....	\$ 26.21	18.11
Technician.....	\$ 29.12	18.22

ELECTRICIAN

Barbour, Doddridge, Harrison, Lewis, Marion, Monongalia, Pendleton, Pocahontas, Preston, Randolph, Taylor, Tucker, Upshur.....	\$ 30.14	21.14
Berkeley, Grant, Hampshire, Hardy, Jefferson, Mineral, Morgan..	\$ 30.50	15.78
Boone, Braxton, Calhoun, Clay, Fayette, Gilmer, Kanawha, Nicholas, Putnam, Raleigh, Roane, Summers, Webster, Wyoming.....	\$ 35.34	16.62
Brooke, Marshall, Ohio, Wetzel.....	\$ 28.35	22.74
Cabell, Lincoln, Logan, Mason, Mingo, Wayne.....	\$ 32.62	21.70
Greenbrier, McDowell, Mercer, Monroe.....	\$ 25.05	16.32
Hancock.....	\$ 34.00	29.10
Jackson, Pleasants, Ritchie, Tyler, Wirt, Wood..	\$ 31.56	21.43

IRONWORKER

Barbour, Brooke, Hancock, Harrison, Marion, Marshall, Monongalia, Ohio, Taylor, Tyler, Wetzel..	\$ 35.74	22.84
Berkeley, Grant, Hampshire, Hardy, Jefferson, Mineral, Morgan, Pendleton, Preston, Tucker.....	\$ 33.29	17.39
Boone, Braxton, Clay, Fayette, Kanawha, Lincoln, Logan, McDowell, Mingo, Nicholas, Putnam, Raleigh, Randolph, Webster, Wyoming..	\$ 34.87	19.50
Cabell, Wayne.....	\$ 33.89	21.98
Calhoun, Doddridge, Gilmer, Jackson, Lewis, Mason, Pleasants, Ritchie, Roane, Upshur, Wirt, Wood...	\$ 33.02	20.10
Greenbrier, Mercer, Monroe, Pocahontas, Summers..	\$ 35.43	16.13

LABORER

Class 1.....	\$ 26.95	16.30
Class 2.....	\$ 25.92	16.30
Class 3.....	\$ 24.86	16.30

LABORER CLASSIFICATIONS:

GROUP 1: Powderman, Laser Screed Operator, and GPS Operator.
 GROUP 2: Pipelayer (Including Laser Beam Set Up), Form Setter (Road), Drill Operator, Air Tool Operator, Grade Checker and Asphalt Raker, Vibrator Man, Whacker, Chainsaw Operator, Mortarman, Brick Mason Tender, Cement Finisher Tender, Drill Tender, Powderman Tender, Water Proofer, Sheeter & Shorer, Placement of Lagging, Pipelayer Tender, Bull-Float Man, Pavement Reinforcing Placer, Handyman, Signal Man, Greencutter, Georgia Power Buggie, Burner, Cement Blower Man,

Bituminous Hand Sprayer, Bork 250 Remote Control Ditch Witch and Walk Behind Concrete Saw, Mulcher and Seeder (hand and machine), Installation of Ground Mounted Beams and Signs including Concrete Footers, Installation of Overhead Sign Supports and Signs including Concrete Footers, Installation of Guardrail and Anchors Assemblies, Tree Trimmer, Caisson Bottom Man, Bush Hammering, Core Drilling, Placement and Mixing of Grout and Bridge Demolition Specialist.**
 GROUP 3: Flag Person, Traffic Control Maintenance Person, Carpenter's Tender, and General Laborer.

PAINTER

Barbour, Berkeley, Doddridge, Gilmer, Grant, Hampshire, Hardy, Harrison, Jefferson, Lewis, Marion, Mineral, Monongalia, Morgan, Pendleton, Preston, Randolph, Taylor, Tucker, Upshur, Webster.....\$ 31.87	14.20
Boone, Braxton, Cabell, Calhoun, Clay, Fayette, Greenbrier, Kanawha, Lincoln, Logan, Mason, McDowell, Mercer, Mingo, Monroe, Nicholas, Pocahontas, Putnam, Raleigh, Summers, Wayne, Wyoming.....\$ 32.05	14.30
Brooke, Hancock, Marshall, Ohio, Wetzel.....\$ 30.95	14.36
Jackson, Pleasants, Ritchie, Roane, Tyler, Wirt, Wood.....\$ 30.84	14.30

PILEDRIVERMAN

Berkeley, Grant, Hampshire, Hardy, Jefferson, Mineral, Morgan, Pendleton.....\$ 32.25	15.90
Brooke, Hancock, Marshall, Monongalia, Ohio, Wetzel....\$ 32.01	16.76
Remaining Counties.....\$ 28.27	19.44

POWER EQUIPMENT OPERATOR:

Class 1.....\$ 33.25	18.60
Class 2.....\$ 30.49	18.60
Class 3.....\$ 29.38	18.60
Class 4.....\$ 25.92	18.60
Class 5A.....\$ 26.04	18.60
Class 5B.....\$ 28.64	18.60
Class 5C.....\$ 26.94	18.60

POWER EQUIPMENT OPERATOR CLASSIFICATIONS:

GROUP 1: Cranes, tower cranes, derricks, derrick boats, draglines, clamshells, cableways, boom truck, loaders of 6 cubic yard capacity and over, excavators and shovels with an operating weight of 110,000 pounds and over.

GROUP 2: Loaders up to 6 cubic yard capacity, gradall, hoist 2 drums or more, mixer plant (2 or more mixers including batch control), pile driver operator, core drill, trencher, backhoe, asphalt paver, cement paver, rotary drill, bulldozers, concrete pump, controlled fine grade machine, slip form paver, log loader, log skidder, motor grader, rubber tired scraper, tractor pan, Roto Miller, tow or work boat, mobile conveyor,

transloader, articulating equipment, material hauler, carry deck, compactor with blade, skidsteer including attachments, fork lift, self-propelled concrete spreader, concrete finishing machine, derrick (single drum), hoist (single drum), single drum paver, air tugger, Ross Carrier, multiple concrete saw, hydraulic post driver, horizontal road-boring machine, tie distributor, track lining machine, ballast tamper, anchor application machine, ribbon rail puller, ballast regulator, auto sled, turn table, pavement breaker, asphalt batch plant, concrete batch plant, crushing plant, compactor with blade, power broom, vac-all truck, self-propelled concrete spreader and concrete finishing machine, mechanics with tools and greasers, excavators, and shovels with an operating weight of up to 110,000 pounds.

GROUP 3: Asphalt roller

GROUP 4: Air compressor, concrete mixer (under 1 cubic yard), light plant, mechanic's tender, assistant engineer, screedman, spreader box man, joint sealer and pump, steam jenny, stationary conveyor (belt or bucket), A-frame, tire man, screening and washing plant, form sub-grader, power form handling equipment, burlap and curing machine, form grader, bull float, bar and joint installing machine, roller and compactor, hydroblaster, concrete mixer (single drum, 1 cu. yd. or over), portable concrete saw and highway striping operator. Utility operators shall be paid Group 2 rate when operating 1 to 5 air compressors, pumps, stationary conveyors (belt or bucket), light plants, and gasoline or diesel powered welders and all farm type tractors.

GROUP 5A: Those operating off-road trucks in the following counties: Barbour, Braxton, Boone, Calhoun, Clay, Doddridge, Fayette, Gilmer, Greenbrier, Harrison, Jackson, Kanawha, Lewis, Marion, Mercer, McDowell, Monongalia, Monroe, Nicholas, Pleasants, Pocohontas, Preston, Putnam, Raleigh, Randolph, Roane, Ritchie, Summers, Taylor, Tucker, Tyler, Upshur, Webster, Wirt, Wood, and Wyoming.

GROUP 5B: Those operating off-road trucks in the following counties: Cabell, Lincoln, Logan, Mason, Mingo, and Wayne.

GROUP 5C: Those operating off-road trucks in the following counties: Berkeley, Grant, Hampshire, Hardy, Jefferson, Mineral, Morgan and Pendleton.

FOOTNOTE: \$2.00 per hour shall be added to the Group 1 rate for individuals operating a lattice boom crane with a fixed boom of 150 feet or more. \$0.25 per hour shall be added to all of the above schedules for underground work.

TRUCK DRIVER

Berkeley, Grant,		
Hampshire, Hardy,		
Jefferson, Mineral,		
Morgan, Pendleton		
Class 1.....	\$ 25.72	18.11
Class 2.....	\$ 26.61	18.11
Class 3.....	\$ 27.38	18.11
Brooke, Hancock		
Class 1.....	\$ 29.17	13.86
Class 2.....	\$ 30.92	13.86
Class 3.....	\$ 31.71	13.86
Cabell, Lincoln, Logan,		
Mason, Mingo, Wayne		
Class 1.....	\$ 29.79	15.60
Class 2.....	\$ 30.76	15.60
Class 3.....	\$ 31.55	15.60
Marshall, Ohio, Wetzel		
Class 1.....	\$ 26.26	16.81
Class 2.....	\$ 27.16	16.81

Class 3.....	\$ 27.76	16.81
Remaining Counties		
Class 1.....	\$ 26.97	16.15
Class 2.....	\$ 27.76	16.15
Class 3.....	\$ 28.44	16.15

TRUCK DRIVER CLASSIFICATIONS:

GROUP 1: Single Axle Trucks used as Dumps, Supply, Fuel, Water, Van, Flatbody, Monorail, Distributor (other than Bituminous Distributors) including Towed Single Units, Material Checkers and Receivers, Greasers, Tireman and Mechanic Tenders (Trucks), Warehouse, Yardmen and Pick-up trucks.

GROUP 2: Tandem and Tri-Axle Trucks used as Dumps, Supply, Fuel, Water, Van, Flatbody, Monorail and including Towed Single Units, Truck Tractors used in combination with Dump, Van, Tank, Flatbed, Low platform or Pole Trailers, Bituminous Distributors, Agitator or Mixer Trucks (up to 20 cubic-yards), Rubber-tired tractors (towing and pushing), Drag and Tag-alongs.

GROUP 3: Mobile Metered Mixer, Agitator or Mixer Trucks (over 20 cubic yards), & Mechanic Truck.

A. Double Hitch equipment operated by 1 driver shall pay 50% more than the wages set out above.

B. \$0.25 per hour shall be added for tunneling and all other underground work.

WELDERS - Receive rate prescribed for craft performing operation to which welding is incidental.

=====
Note: Executive Order (EO) 13706, Establishing Paid Sick Leave for Federal Contractors applies to all contracts subject to the Davis-Bacon Act for which the contract is awarded (and any solicitation was issued) on or after January 1, 2017. If this contract is covered by the EO, the contractor must provide employees with 1 hour of paid sick leave for every 30 hours they work, up to 56 hours of paid sick leave each year. Employees must be permitted to use paid sick leave for their own illness, injury or other health-related needs, including preventive care; to assist a family member (or person who is like family to the employee) who is ill, injured, or has other health-related needs, including preventive care; or for reasons resulting from, or to assist a family member (or person who is like family to the employee) who is a victim of, domestic violence, sexual assault, or stalking. Additional information on contractor requirements and worker protections under the EO is available at <https://www.dol.gov/agencies/whd/government-contracts>.

Unlisted classifications needed for work not included within the scope of the classifications listed may be added after award only as provided in the labor standards contract clauses (29CFR 5.5 (a) (1) (ii)).

The body of each wage determination lists the classification and wage rates that have been found to be prevailing for the cited type(s) of construction in the area covered by the wage determination. The classifications are listed in alphabetical order of "identifiers" that indicate whether the particular

rate is a union rate (current union negotiated rate for local), a survey rate (weighted average rate) or a union average rate (weighted union average rate).

Union Rate Identifiers

A four letter classification abbreviation identifier enclosed in dotted lines beginning with characters other than "SU" or "UAVG" denotes that the union classification and rate were prevailing for that classification in the survey. Example: PLUM0198-005 07/01/2014. PLUM is an abbreviation identifier of the union which prevailed in the survey for this classification, which in this example would be Plumbers. 0198 indicates the local union number or district council number where applicable, i.e., Plumbers Local 0198. The next number, 005 in the example, is an internal number used in processing the wage determination. 07/01/2014 is the effective date of the most current negotiated rate, which in this example is July 1, 2014.

Union prevailing wage rates are updated to reflect all rate changes in the collective bargaining agreement (CBA) governing this classification and rate.

Survey Rate Identifiers

Classifications listed under the "SU" identifier indicate that no one rate prevailed for this classification in the survey and the published rate is derived by computing a weighted average rate based on all the rates reported in the survey for that classification. As this weighted average rate includes all rates reported in the survey, it may include both union and non-union rates. Example: SULA2012-007 5/13/2014. SU indicates the rates are survey rates based on a weighted average calculation of rates and are not majority rates. LA indicates the State of Louisiana. 2012 is the year of survey on which these classifications and rates are based. The next number, 007 in the example, is an internal number used in producing the wage determination. 5/13/2014 indicates the survey completion date for the classifications and rates under that identifier.

Survey wage rates are not updated and remain in effect until a new survey is conducted.

Union Average Rate Identifiers

Classification(s) listed under the UAVG identifier indicate that no single majority rate prevailed for those classifications; however, 100% of the data reported for the classifications was union data. EXAMPLE: UAVG-OH-0010 08/29/2014. UAVG indicates that the rate is a weighted union average rate. OH indicates the state. The next number, 0010 in the example, is an internal number used in producing the wage determination. 08/29/2014 indicates the survey completion date for the classifications and rates under that identifier.

A UAVG rate will be updated once a year, usually in January of each year, to reflect a weighted average of the current negotiated/CBA rate of the union locals from which the rate is based.

WAGE DETERMINATION APPEALS PROCESS

1.) Has there been an initial decision in the matter? This can be:

- * an existing published wage determination
- * a survey underlying a wage determination
- * a Wage and Hour Division letter setting forth a position on a wage determination matter
- * a conformance (additional classification and rate) ruling

On survey related matters, initial contact, including requests for summaries of surveys, should be with the Wage and Hour National Office because National Office has responsibility for the Davis-Bacon survey program. If the response from this initial contact is not satisfactory, then the process described in 2.) and 3.) should be followed.

With regard to any other matter not yet ripe for the formal process described here, initial contact should be with the Branch of Construction Wage Determinations. Write to:

Branch of Construction Wage Determinations
Wage and Hour Division
U.S. Department of Labor
200 Constitution Avenue, N.W.
Washington, DC 20210

2.) If the answer to the question in 1.) is yes, then an interested party (those affected by the action) can request review and reconsideration from the Wage and Hour Administrator (See 29 CFR Part 1.8 and 29 CFR Part 7). Write to:

Wage and Hour Administrator
U.S. Department of Labor
200 Constitution Avenue, N.W.
Washington, DC 20210

The request should be accompanied by a full statement of the interested party's position and by any information (wage payment data, project description, area practice material, etc.) that the requestor considers relevant to the issue.

3.) If the decision of the Administrator is not favorable, an interested party may appeal directly to the Administrative Review Board (formerly the Wage Appeals Board). Write to:

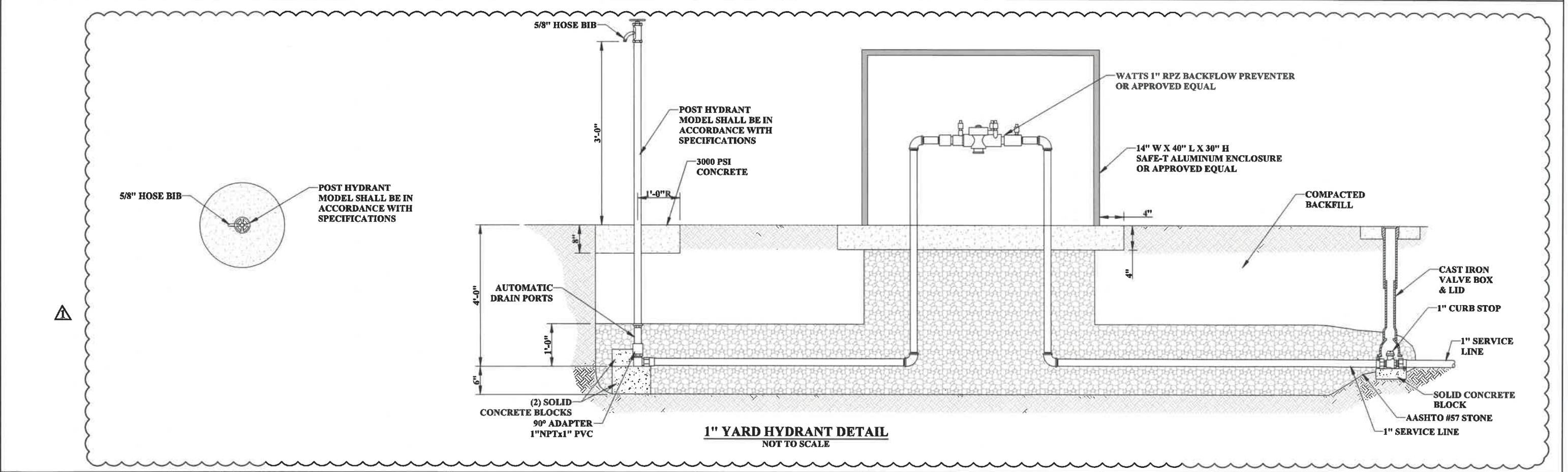
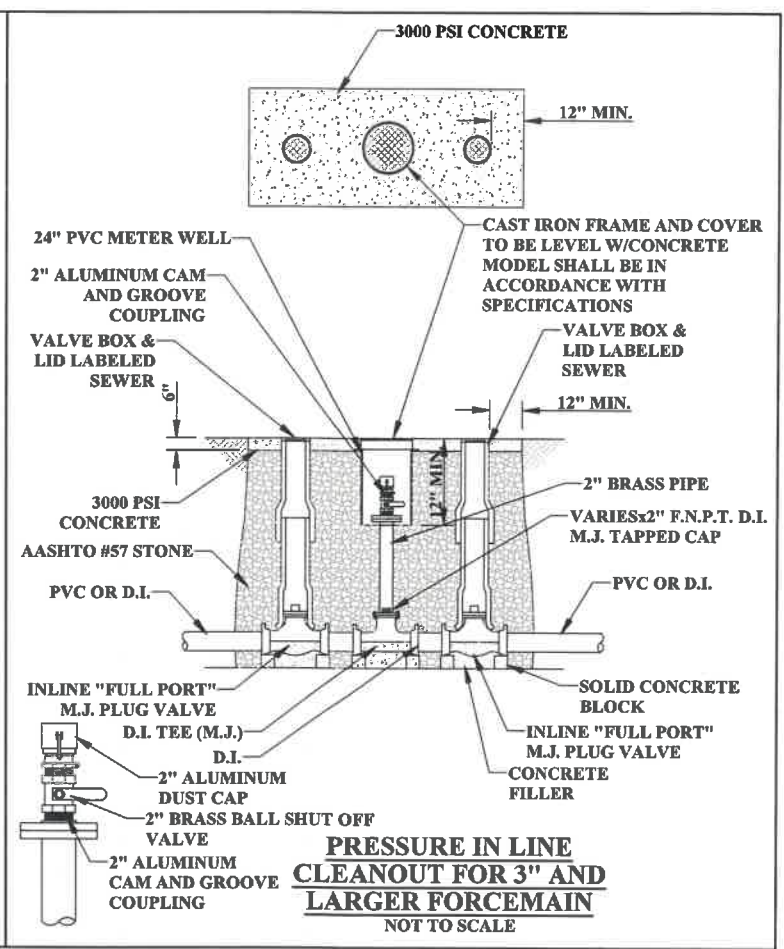
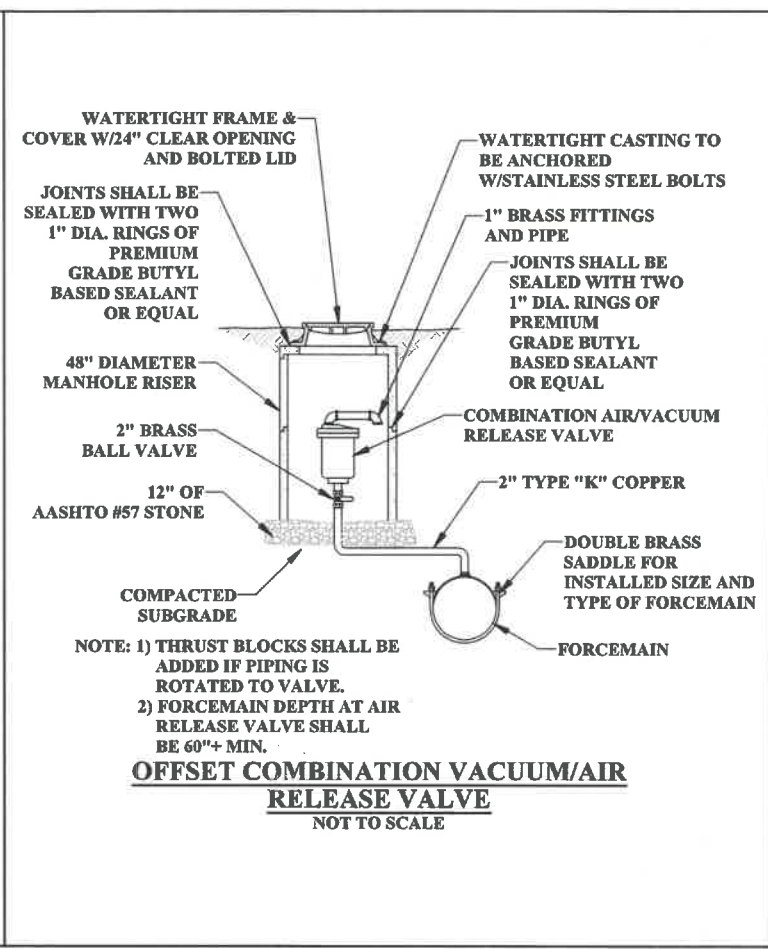
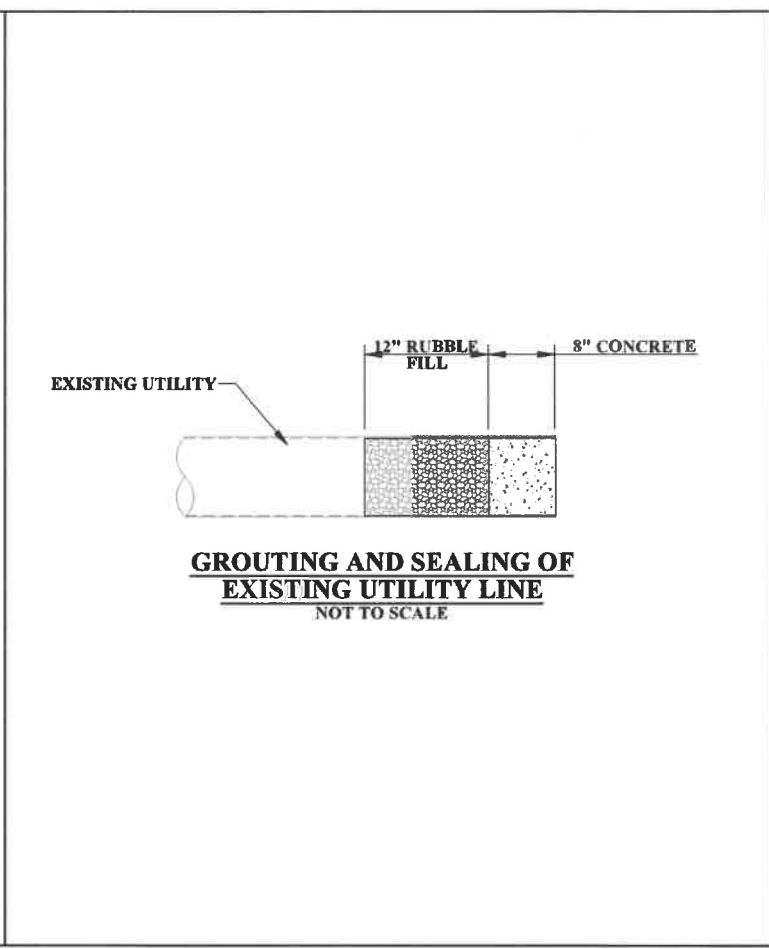
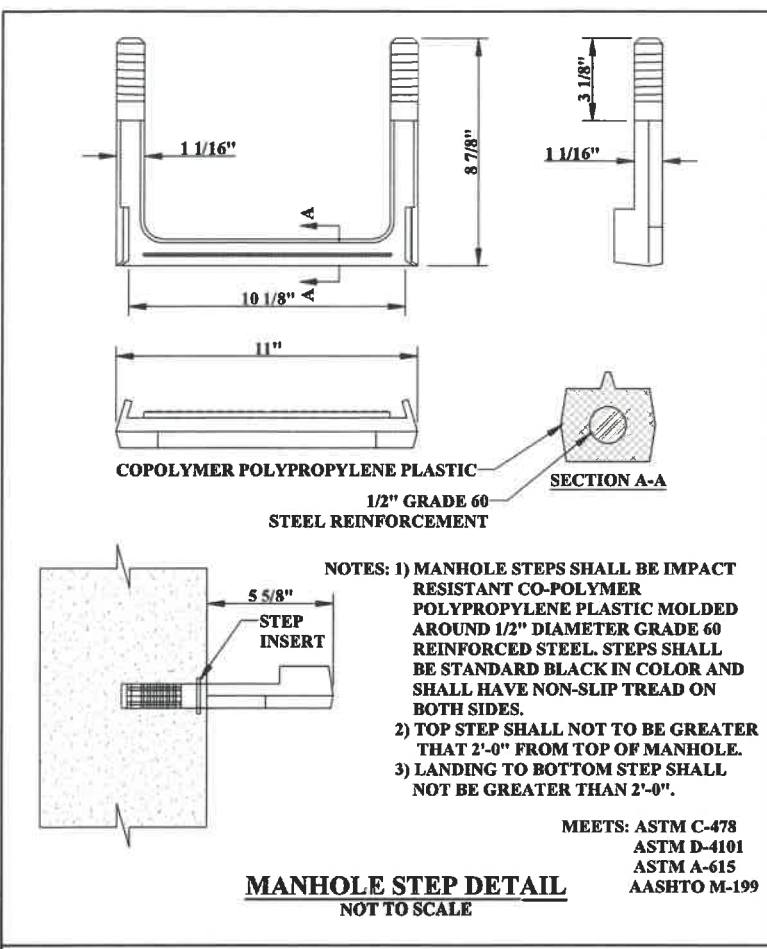
Administrative Review Board
U.S. Department of Labor
200 Constitution Avenue, N.W.
Washington, DC 20210

4.) All decisions by the Administrative Review Board are final.

=====

END OF GENERAL DECISIO"

LAYOUT TAB: D4
 CAD FILE: R:\020-020-1535-WFIP-RIPLEY-Drawing\Contract #1-AS\001-tyr-sewer Details.dwg
 PLOT DATE/TIME: 3/17/2022 1:33 PM
 USER: andrew sayre



THE INFORMATION CONTAINED HEREIN IS THE SOLE PROPERTY OF THE THRASHER GROUP INC. REPRODUCTION OF THESE DOCUMENTS IN WHOLE OR IN PART, FOR ANY REASON WITHOUT PRIOR WRITTEN PERMISSION, IS STRICTLY PROHIBITED.

NO.	BY	DATE	DESCRIPTION
1	AS	3/17/22	ADDENDUM #2



SCALE: AS NOTED
 DRAWN: A. SAYRE DATE: 11/18
 CHECKED: A. URGO DATE:
 APPROVED: D. FERRELL DATE:
 SURVEY DATE:
 SURVEY BY:
 FIELD BOOK No.:



PHASE No.
 CONTRACT No.
 PROJECT No.
 101-020-1535

CITY OF RIPLEY
 PROPOSED FORCEMAIN FROM
 EVANS WWTP TO PLAZA PUMP STATION
 JACKSON COUNTY, WEST VIRGINIA
 TYPICAL SEWER DETAILS

SHEET No.
D4