

THRASHER

ARCHITECTURE | ENGINEERING | FIELD SERVICES



THE THRASHER GROUP

Press Kit

MISSION

To improve the communities where we live and work by driving infrastructure development.

VISION

To be the Mid-Atlantic firm of choice for clients and employees.

CORE PRINCIPLES

Quality
Safety
Adaptability
Integrity



10

OFFICES

in seven states:

Bridgeport, WV
Beckley, WV
Burton, WV
Charleston, WV
Canonsburg, PA
Canton, OH
Fredericksburg, VA
Lexington, KY
Oakland, MD
Smithfield, NC*

* North Carolina Land
Surveying Services by
The Thrasher Group
North Carolina, Inc.



580+

EMPLOYEES

34 Licensed
Professional Engineers

20 Licensed
Professional Surveyors

6 Licensed
Professional Architects



36

YEARS

of delivering
successful
projects

From a small town civil engineering firm to a respected regional powerhouse, Thrasher has scaled to meet our clients' needs. Today we are a multi-disciplinary firm bringing services to communities and industries throughout the Mid-Atlantic. We bring the combined strength of our expertise to every project, no matter the size.

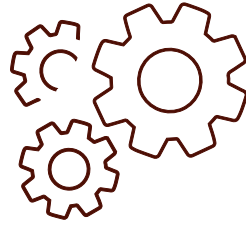


In 1983, a young engineer with an entrepreneurial spirit and his father, a seasoned engineer with more than 40 years of experience, joined forces to start a civil engineering firm focused on public utility infrastructure in North Central West Virginia. With a commitment to building business through “successful projects and repeat clientele,” H. Wood “Woody” Thrasher, PE and the late Henry A. Thrasher, PE formed Thrasher in Clarksburg, West Virginia.

Since that time, Thrasher has grown by delivering the resources required to solve complex infrastructure and development needs. Today The Thrasher Group provides engineering, environmental, architecture, construction services and surveying expertise to communities and organizations throughout the Mid-Atlantic. Thrasher’s nearly 600 employees are known to bring initiative and resolve to everything they do, allowing them to forge deep relationships and lasting partnerships with clients.

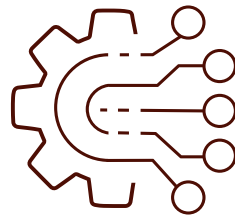
#30 ENR Mid-Atlantic Top Design Firms 2018
#198 ENR Top 500 Design Firms 2019

- 1983** Founded Thrasher
- 1994** Took over client portfolio of Kelley, Gildley, Blair & Wolf
- 1997** Opened the Charleston, WV office
- 2004** Acquired The Berkeley Associates Inc.
- 2005** Acquired Pentree Incorporated, Potomac Engineering & Surveying, and Gustafson & Associates, Inc. Architects
- 2012** Opened the Canton, OH office
- 2013** Acquired Geometrics GPS Inc. (Fredericksburg, VA), Debuted on ENR Rankings, Moved to White Oaks Business Park.
- 2014** Opened the Beckley, WV office
- 2017** Opened offices in Lexington, KY and Canonsburg, PA
- 2018** Acquired Blue Mountain Inc.



SERVICES

- > Engineering
- > Environmental
- > Architecture
- > Survey
- > Geospatial
- > Construction Management



CORE MARKETS

- > Public/Private Utilities
- > Land Development
- > Highways and Roads
- > Energy
- > Industrial
- > Commercial
- > Education (K-12, Higher Ed)



CIVIL ENGINEERING

Whether it is roads, bridges, water treatment facilities, site planning, or buildings, our team can handle it. We have dozens of licensed professional engineers - as well as countless engineering interns - with expertise in all areas of civil engineering.



ARCHITECTURE

Having completed architecture projects in the education, hospitality, healthcare, commercial, and industrial markets, we help clients realize their vision, whatever it may be.



ENVIRONMENTAL

Environmental concerns are at the top of many project priorities, but can be difficult to navigate. Thrasher's Environmental Division partners with clients as a technical and regulatory advocate to overcome obstacles and understand policies.



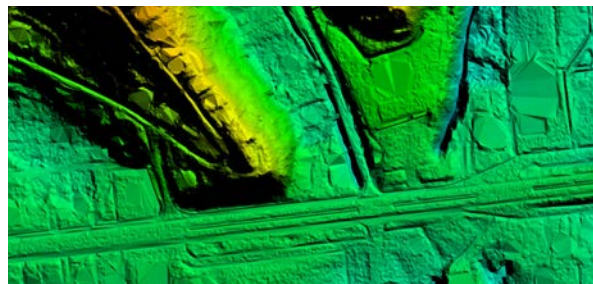
ENERGY

The Mid-Atlantic region has a wealth of energy resources, including oil, natural gas, coal, wind, water, and electric. Thrasher brings informed integrated services to handle projects in all of these areas.



CONSTRUCTION SERVICES

From pre-construction activities to materials testing and job progress reviews, Thrasher's construction services ensures project integrity. Not only do we handle projects designed by our team, we also take on projects involving outside contractors and designers.



SURVEY & GEOSPATIAL

Thrasher's survey and geospatial group has earned a reputation for accuracy and a get-it-done attitude. Our skilled staff can help determine the best type of data collection method for a project and have the resources to complete it.

Founder, The Thrasher Group



H. Wood “Woody” Thrasher is a proud third-generation engineer. He earned his Bachelor of Science degree from West Virginia University in civil engineering in 1977. He and his father, the late Henry A. Thrasher, started Thrasher Engineering in Clarksburg, WV in 1983.

Woody grew the business by focusing on public utility infrastructure and “doing really good work and getting hired back.” He prioritized forging lasting relationships with clients and communities. He and the small group of employees spent countless hours visiting clients and attending public meetings.

A consummate entrepreneur, as clients would describe problems they encountered, Woody would take on those challenges. He began adding to the company’s list of services, such as survey and inspection, to better serve clients. He grew his team by hiring hard-charging problem solvers ready to roll up their sleeves to get the job done and instilled a work hard/play hard culture that continues to attract and keep the best talent.

Woody has proudly served in leadership positions for numerous local, state and regional organizations, including chairman of the WVU Alumni Association and president of Genesis Youth Center. He has also spent time as president of the local Chamber of Commerce, local United Way, the T. Moore Jackson Chapter of the Society of Professional Engineers, the state chapter of the American Council of Engineering Companies, and the West Virginia Society of Professional Engineers.

Over the years, Woody has received several awards and distinctions, two of his most cherished being the Ernst & Young’s Entrepreneur of the Year in 2000 and The Exponent-Telegram’s Entrepreneur of the Year in 2013. One his proudest achievements is the creation of White Oaks Development, the 450-acre professional business park in Harrison County, WV which is home to The Thrasher Group’s headquarters. Roughly 3,000 people work there as a result of \$400 million in investment.

In 2016, Woody stepped away from The Thrasher Group to serve as secretary of the West Virginia Department of Commerce, where he supported key infrastructure projects for the state. His team made advancements in broadband service, secured more funding for tourism for repairs to our state parks’ facilities, and drafted improvements to our timber industry.

In April 2019, Woody announced his campaign to run for Governor of West Virginia. Learn more at www.woodythrasher2020.com.

Chief Executive Officer



Education

Bachelor of Science,
Civil Engineering
Fairmont State University

Registrations

Professional Engineer:

- > West Virginia
- > Maryland

Affiliations

- > Harrison County Chamber of Commerce
- > Harrison County Economic Development Corporation

Chad Riley, PE has served as CEO of The Thrasher Group since 2016. In this role, he manages overall operations of the company, providing leadership and strategic oversight for all ten Thrasher offices. He remains an active engineer, leading site development projects for industrial, business, and multi-use developments throughout the Mid-Atlantic region.

Chad has been with Thrasher for more than 20 years. Prior to becoming CEO, Chad held various positions, including leading the construction services and site groups. He has spent a large portion of his career focusing on the development of industrial parks and delivering strategically designed sites for a various manufacturing and commercial clients.

One of Chad's passions is to bring economic growth to his home state of West Virginia. His efforts as an engineer and business leader continue to make an impact. Chad has been heavily involved in over 20 economic development projects throughout the state, and continues to keep a pulse on the influx of industrial growth in the region.

Chad Riley has been a member of the Thrasher family since 1996. His passion for the company and love for his work makes him an enthusiastic leader.

Chief Operations Officer



Education

Bachelor of Science,
Civil and Environmental
Engineering
West Virginia University

Registrations

Professional Engineer:

- > West Virginia
- > Virginia
- > Ohio
- > North Carolina

Registered Professional

Surveyor:

- > West Virginia

Ken Moran, PE, PS serves as the Chief Operating Officer of The Thrasher Group. He has been with Thrasher since 1991, and is a shareholder of the firm.

With years of industry experience, Ken has provided wide-ranging and steady leadership during the company's growth. His ability to absorb large amounts of information and filter what is most critical at any point of time along with his unflinching focus on results, has made him an excellent chief operating officer at one of the fastest growing firms in the Mid-Atlantic region.

At various stages of his career at Thrasher, Ken has led the survey and site divisions. He continues to be a valuable technical resource for project managers faced with complex problems. He has been involved in countless projects, ranging from waterline extensions to multi-million-dollar land development projects.

Chief Financial Officer



Education

Bachelor of Science,
Finance
Fairmont State University

Registrations

Certified Public Accountant

As Chief Financial Officer of The Thrasher Group, Ron Stanley oversees the total fiscal health of the firm and provides valuable insight into business operations. Ron joined Thrasher as CFO and part of the executive management team in 2009. Since that time, Thrasher's operations have grown rapidly from less than 100 employees operating in one state to 600 employees working throughout the Mid Atlantic region.

Prior to joining Thrasher, he was the Partner-in-Charge of Tax at Toothman & Rice, an accounting firm. Throughout his career, Ron has worked extensively on business transactions, planning and commercial real estate ventures. He has overseen several successful acquisitions, including the recent addition of the assets of Blue Mountain, Inc.

The word "THRASHER" in a bold, black, outline-style sans-serif font. The letters are closely spaced and have a consistent stroke width.The word "THRASHER" in a bold, maroon, outline-style sans-serif font, identical in style to the black version above.

The Thrasher logo is one of which we are immensely proud. This wordmark has long been the visual representation of the company, and represents a history of successful, reputable engineering services.

The Thrasher logo may be used in black or Thrasher Maroon, as pictured.

A "clear area" around the logo equal to the height of the letters should be incorporated into any design using the logo.

The letters in the Thrasher logo should never be less than 1/4 inch (0.25").

Do not manipulate or distort the Thrasher logo by stretching or compressing it.

Do not reposition or resize any of the logos components.

Do not overlap with other logos or marks.

Do not add a drop shadow or any other effect.

Do not add any elements, such as lines or punctuation marks.

Do not add words or images to create a new composite logo treatment.



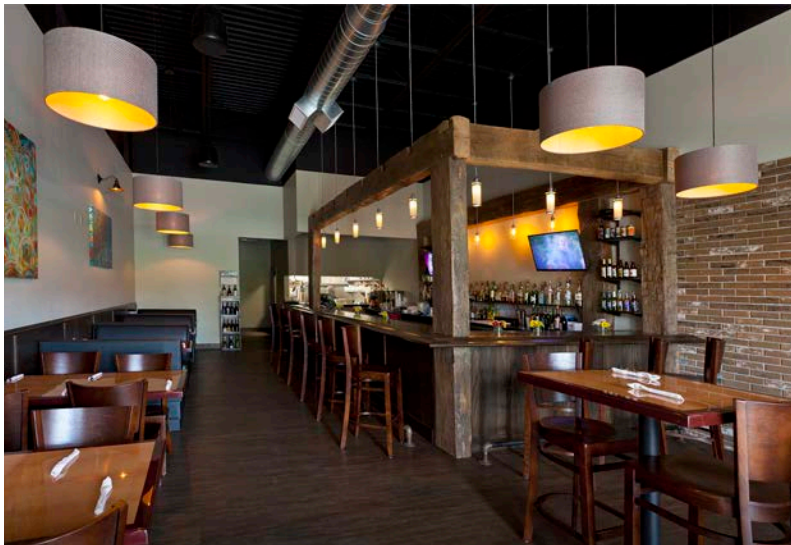
Mingo County Public Service
District Water Treatment and
Distribution System - Mingo
County, WV



Bridgeport Water Tanks -
Harrison County, WV



Harvey Family Mountain Bike Shop
- Fayette County, WV



Cody's Restaurant - Harrison
County, WV



Doddridge County High School
Auxiliary Gym Expansion -
Doddridge County, WV



Bridgeport Recreation Complex -
Harrison County, WV



Palatine Park - Marion County, WV



Bridgeport office



Bridgeport office

THRASHER

ARCHITECTURE | ENGINEERING | FIELD SERVICES